

Traffic Safety in Suburbia

Los Angeles and Ventura Counties

July 20, 2021

1:00 pm – 2:30 p.m.

www.scag.ca.gov



Meeting Logistics



1. Webinar length: approximately 1.5 hours
2. Please take care to mute your audio/phones
3. At the end of the presentations, there will be a Q&A session followed by a facilitated group discussion
4. If you have a question during a presentation, type it into the chat box, or raise your hand and we will call on you after the presentation is finished
5. Think of something later? Email aguirre@scag.ca.gov or the presenter
6. All presentations will be emailed to those who registered to participate in today's webinar

Presentations



Presentation #1: Overview of Regional Conditions, *Go Human* Campaign

Courtney Aguirre, SCAG

Presentation #2: A Look at the Last Decade

Derek Towers, City of Ventura

Presentation #3: What is Unique About Suburban Communities

Tim Fremaux, Los Angeles Department of Transportation

Presentation #4: Livable Communities for All Ages

Stephanie Ramirez, AARP California

Overview of Regional Conditions & *Go Human* Campaign

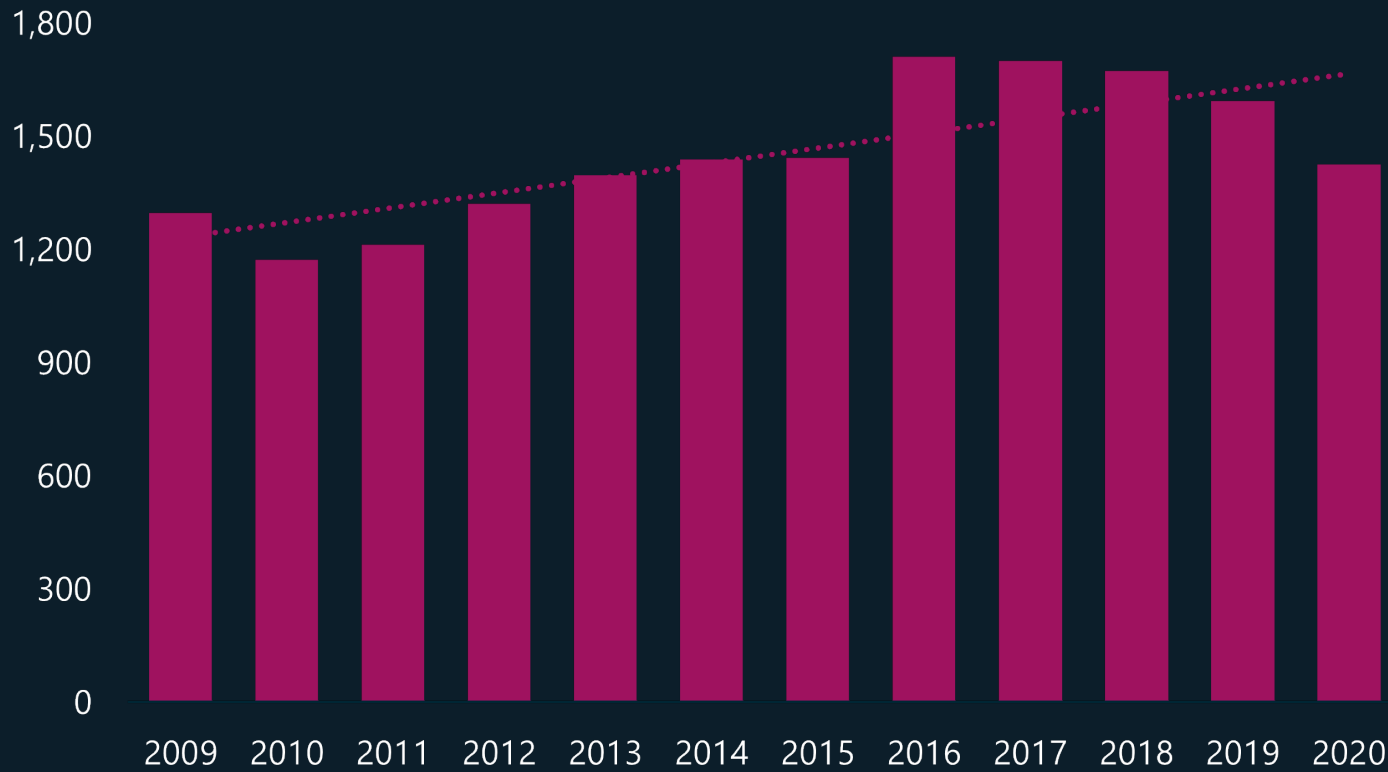
Summer 2021

www.scag.ca.gov



What are the overall trends?

SCAG Region Total Number of Fatal Victims



1,450
PEOPLE DIE EVERY YEAR FROM COLLISIONS

5,500
PEOPLE SUSTAIN SERIOUS INJURIES EVERY YEAR FROM COLLISIONS

77%
OF ALL COLLISIONS OCCUR IN URBAN AREAS

Why are collisions occurring?

One of the top contributing factors of all collisions is unsafe speed.

Speed is the critical factor in the severity of collisions.

HIT BY A VEHICLE TRAVELING AT 25 MPH
89% chance of survival.

HIT BY A VEHICLE TRAVELING AT 35 MPH
68% chance of survival.

HIT BY A VEHICLE TRAVELING AT 40 MPH
35% chance of survival.

Arriving Home Safe

The State of Transportation Safety in the Southern California Region

Southern California Association of Governments | June 8, 2021

Visit scag.ca.gov/transportation-safety for all county-specific factsheets, a Story Map, the Transportation Safety Regional Existing Conditions Report, and more.



Go Human Active Transportation Safety & Encouragement Campaign



Co-Branding & Regional Advertising Campaign



Temporary Safety Demonstrations & Programming (Kit of Parts)



Safety Workshops, Webinars, and Technical Assistance



SCAG's *Go Human* Traffic Safety Peer Exchanges



Traffic Safety Peer Exchanges Events



Tuesday, July 13, 1 p.m.

Human-Centered Safety in Rural Communities
(Imperial, Riverside, & San Bernardino Counties)

Thursday, July 15, 11 a.m.

Traffic Safety in the City: Centering Equity & Access
(Orange, Riverside, & San Bernardino County)

Tuesday, July 20, 1 p.m.

Traffic Safety in Suburbia: Serving All Ages
(Ventura & Los Angeles Counties)

Friday, July 23, 1:15 p.m.

Reimagining Community Safety

Thursday, July 29, 1 p.m.

Traffic Safety in Suburbia: Serving All Ages
(Orange, Riverside, & San Bernardino Counties)

Tuesday, August 3, 11 a.m.

Human-Centered Safety in Rural Communities
(Ventura & Los Angeles Counties)

Tuesday, August 10, 1 p.m.

Traffic Safety in the City: Centering Equity and Access
(Los Angeles County)



Visit gohumansocal.org to register and sign up for the *Go Human* newsletter

Follow *Go Human* on socials @GoHumanSoCal

Ventura Vulnerable User Safety

A Look at the Last Decade





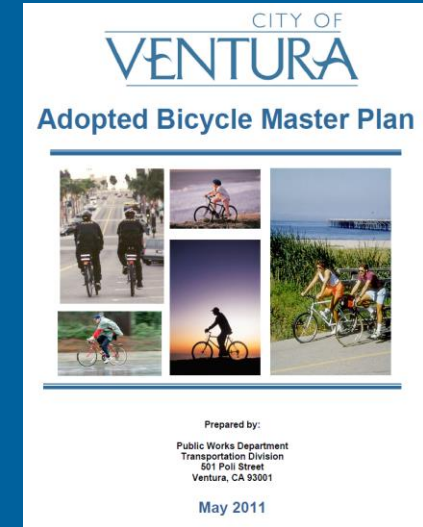
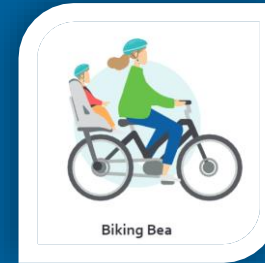
Road Paving and Parking Projects



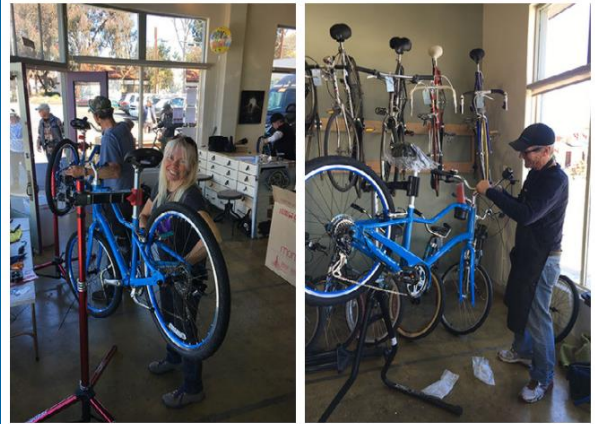
Protected Bike Lanes



Fun!!!



- 500 Projects
- 100 Actions
- \$50 Million
- 60 Projects worked on
- Prioritizing



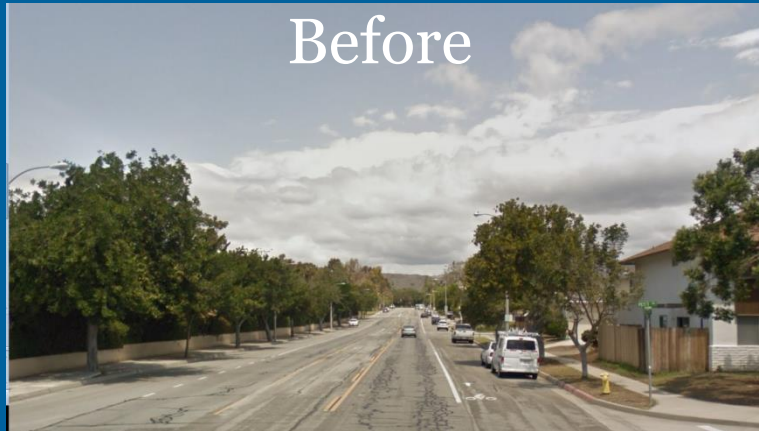
BikeVentura



cycle
cal
coast



The City's Role in Community



- Bike Plan
- Design





Ventura Ave Paving



- Advise
- Industry





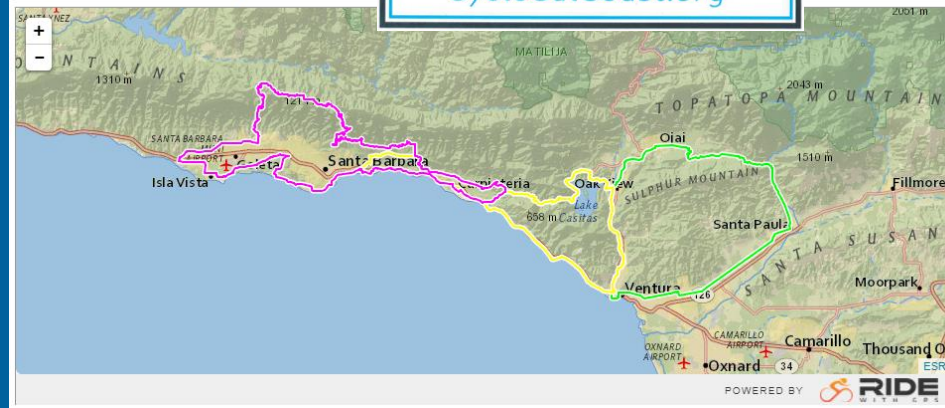
BICYCLE FRIENDLY BUSINESS
GOLD THE LEAGUE OF AMERICAN BICYCLISTS

VENTURA BIKE DEPOT, INC.
4 EMPLOYEES
BICYCLE SHOP
239 WEST MAIN STREET
VENTURA, CA 93001

f



The Grand Loop



Derek Towers – (805) 654-7849
Dtowers@cityofventura.ca.gov



PHOTO: RICH RENDON

 www.cityofventura.ca.gov



@CityofVentura

CITY OF
VENTURA



TRAFFIC SAFETY IN SUBURBIA: SERVING ALL AGES

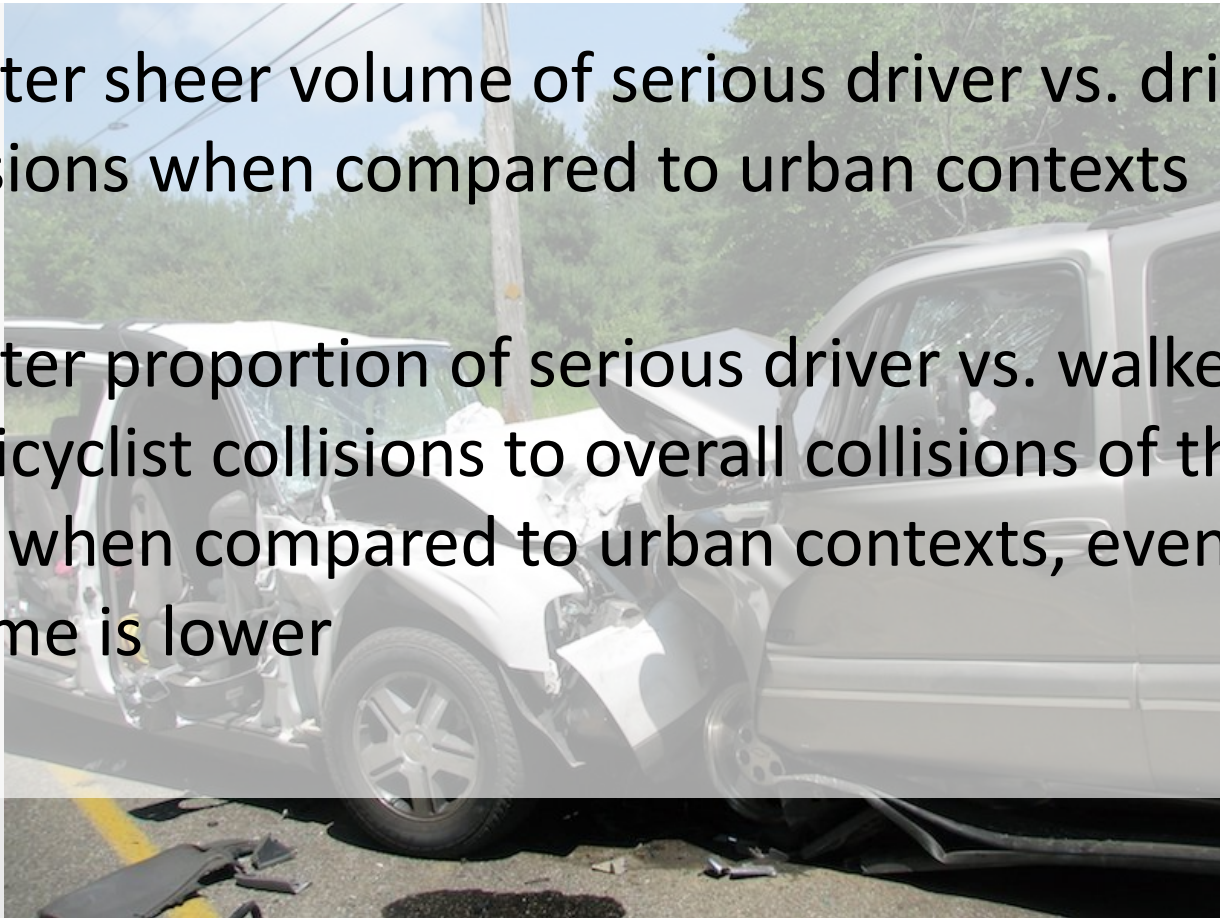
SCAG TRAFFIC SAFETY PEER EXCHANGE

July 20, 2021

nearmap
current · clear · change

Suburban Collision Landscape

- Greater sheer volume of serious driver vs. driver collisions when compared to urban contexts
- Greater proportion of serious driver vs. walker or driver vs. bicyclist collisions to overall collisions of the same type when compared to urban contexts, even if sheer volume is lower



The Problem

- Long, straight, flat, wide roads with long uninterrupted segments, leading to:
 - Higher speeds
 - Few opportunities for people walking and bicycling to cross (crossings tend to be challenging due to speeds and lack of crossing infrastructure)
- Areas of higher activity tend to be at major intersections or along short commercial corridors or hubs

The Problem



Solutions: Crossing Infrastructure

- Provide robust crossing infrastructure:
 - along commercial corridors and hubs, even if near other controlled intersections (e.g. crosswalks with Pedestrian Hybrid Beacons)
 - At regularly spaced intervals along those currently long uninterrupted stretches of road (focus on desire lines based on attractors like parks, commercial areas, etc.)

Solutions: Crossing Infrastructure - Before



Solutions: Crossing Infrastructure - After



Solutions: Conflicts at Signalized Intersections

- Protect left turns
 - Protected-only where conditions remain challenging at all times
 - Variable where conditions may be challenging at specific hours on specific days (e.g. near schools)

Solutions: Signalized Intersections - Before



Solutions: Signalized Intersections - After



Solutions: Speed Reduction

- Signal timing strategies
 - Run free, shorten cycles (where signals are reasonably closely spaced)
 - Rest-in-Red (where signals are isolated)
- Vertical deflection
 - Speed tables (have been piloted on streets with speed limits as high as 35 MPH; can be paired with a change in condition or speed limit reduction (e.g. senior zones))

Solutions: Speed Reduction - Before



Solutions: Speed Reduction - After



Solutions: Speed Reduction

- Road diets
 - Reduce speeds during “shoulder periods”
 - Reduce many specific types of crashes
- Roundabouts
 - When funding and real estate allows, reduces virtually all speeds entering an intersection

Solutions: Speed Reduction - Before



Solutions: Speed Reduction - After





Livable Communities for All Ages

Stephanie Ramirez
Associate State Director of Community
AARP California



Why This Work Matters

“It has been wisely said that whatever many may say about the future, it is ours, not only that it may happen to us, but it is in part made by us.”

– Dr. Ethel Percy Andrus, Founder, AARP

Preparing for an Aging Population

- By 2034 there will be more people over the age of 65 in the U.S. than under 18.
- By 2030, one in five Americans will be older than 65.
- In California, the over 60-population is projected to diversify and grow faster than any other age group.
- By 2030, 10.8 million Californians will be 60+, making up one-quarter of the state's population.





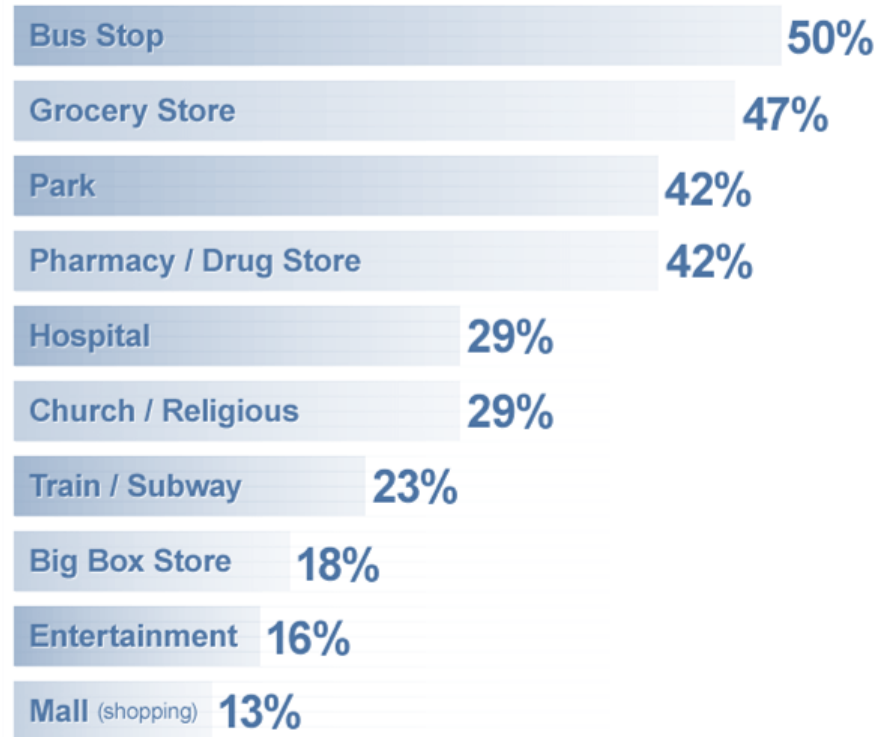
Why Transportation Matters

- Older adults need various modes of transportation options to get to jobs, social activities and services that support their independence. Without it, people may be less able to remain in their communities as they age.

What Community Amenities Do Older Adults Want Close to Home?

We asked older adults what amenities they want close to home. Access to transportation, food, and green space top the list. These are among the many community indicators that we are measuring as part of the Livability Index project. Find out more about our livability research and the development of our index here: www.aarp.org/ppi/liv-com/

% endorsed within 1 mile or less



Source: AARP Public Policy Institute



Connect & Engage With Older Adults

- Identify Civic Engagement and Social Participation Opportunities in Local Community
- Understand Barriers and Needs
- Reach Out To Existing Social Networks

California's Master Plan for Aging

- In June 2019, Governor Gavin Newsom issued an executive order calling for the creation of a Master Plan for Aging (The Plan).
- The Plan outlines five bold goals and twenty-three strategies to build a California for All Ages by 2030.
- It also includes a Data Dashboard on Aging to measure our progress and a Local Playbook to drive partnerships that help us meet these goals together.



Thank you



Facilitated Group Discussion

1. What did you hear today that resonates with your experience in your community?
2. What are some of the obstacles that are preventing equitable improvements to traffic safety in your community and/or in other communities?
3. What did you learn or hear today that will help you improve how traffic safety is currently addressed in your region?

SCAG's Go Human Traffic Safety Peer Exchanges Evaluation Survey:

<https://bit.ly/SCAGExchangeSurvey>

Sign up for another!

<https://scag.ca.gov/traffic-safety-peer-exchange-events>

We will be posting recordings here:

<https://scag.ca.gov/go-human-safety-resources>

Upcoming Events



Date	Time	Topic
7/23	1:15 p.m.	Reimagining Community Safety
7/29	1:00 p.m.	Traffic Safety in Suburbia: Serving All Ages (Orange, Riverside, and San Bernardino Counties)
8/3	11:00 a.m.	Human - Centered Safety in Rural Communities (Ventura and Los Angeles Counties)
8/10	1:00 p.m.	Traffic Safety in the City: Centering Equity and Access (Los Angeles County)

Contact the Project Team

SCAG

Courtney Aguirre

aguirre@scag.ca.gov

Cambridge Systematics

Jon Overman

joverman@camsys.com

For more information

<https://scag.ca.gov/go-human>

www.scag.ca.gov

