



Quick-Build Projects for Roadway Safety and Complete Streets

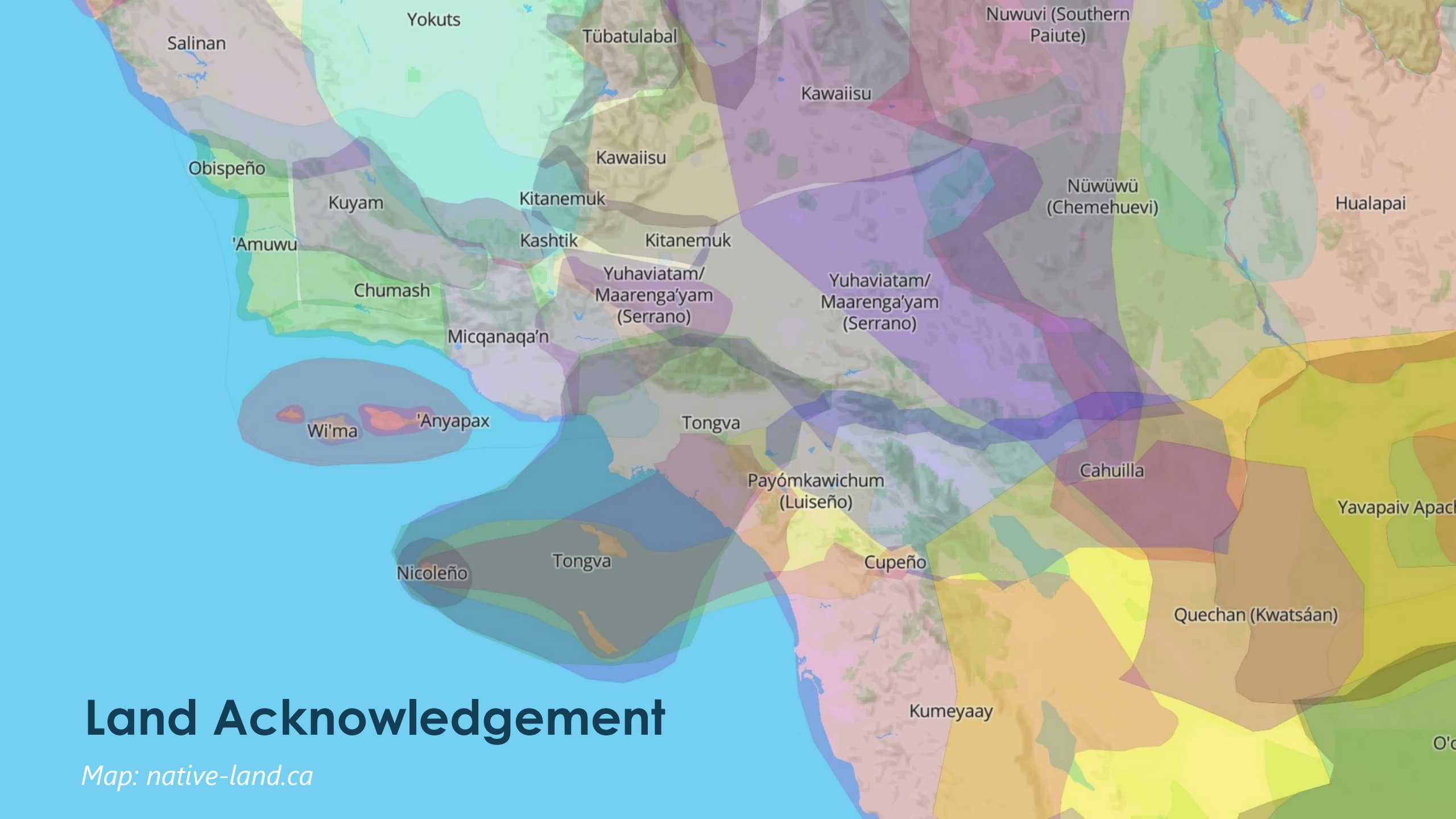
8/20/2024



WWW.SCAG.CA.GOV

Session Logistics

- This session is scheduled for 1.5 hour.
- This meeting is being recorded.
- Closed captioning is available by clicking "Live Transcript" at bottom of screen.
- All participant lines will be muted.
- If you have a question during the Q&A portions, please type it into the chat box or press the "raise hand" function.
- We will log all questions and cover as many as time permits.
- A recording of this webinar and the presentation slides will be available on the SCAG website. We will send a link to everyone who has registered after the event.



Land Acknowledgement

Map: native-land.ca

Agenda

- 1 Quick-Build Project Overview and Lessons Learned
- 2 City of Pasadena: Allen Avenue
- 3 City of Long Beach Quick-Build Projects
- 4 Caltrans Quick-Build Guidance and Partnership Opportunities
- 5 Upcoming Funding Opportunity
- 6 Q&A

POLL

What best describes the type of organization you are representing today?

Where best describes where you are today?



Quick-Build Implementation

Projects, Materials, Timeline, Lessons Learned

Southern California Association of Governments (SCAG) | Toolbox Tuesday

Tuesday, August 20, 2024



- **What is a Quick-Build Project**
- **Typical Materials**
- **Timeline and Life Cycle**
- **Go Human Kit-of-Parts Integration**
- **Lessons Learned**

ABOUT KOA

35+ YEARS OF SERVING
COMMUNITIES



ACTIVE
TRANSPORTATION



PLANNING



ENGINEERING



SAFETY
ASSESSMENTS



GRANT WRITING
& MANAGEMENT



CONSTRUCTION
MANAGEMENT



COMPLETED QUICK-BUILD PROJECTS

- **City of Los Angeles**
 - Little Street/Esperanza Elementary – Westlake/MacArthur Park
 - Shatto Place/Young Oak Kim Academy – Koreatown
 - Orchard Avenue/Magnolia Elementary – Pico Union
 - 11th Street/Leo Politi Elementary – Pico Union
- **City of Pasadena – Allen Avenue**
- **City of El Monte – Mountain View Road/Five-Points Intersection**
- **City of Glendale – North Brand Avenue**
- **City of Calexico – Rockwood Avenue (Downtown Calexico)**

WHAT IS A QUICK-BUILD?

Quick-Build projects implement near-term bicycle, pedestrian, or traffic safety improvements using durable, low- to medium-cost materials and can be easily changed or removed



MATERIALS AND ELEMENTS



Glendale



Long Beach



El Monte

Protected Bike Lane

Separation via planters, parking, k-rail, or plastic posts

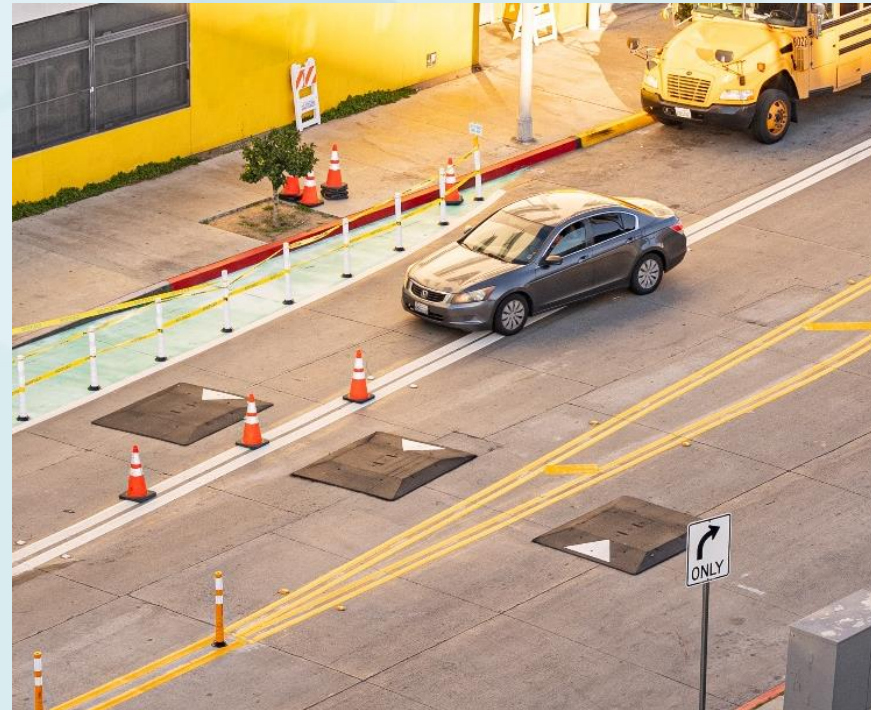
Neighborhood Traffic Circle

Rubber curbs, plastic posts, signage

MATERIALS AND ELEMENTS



Glendale



Los Angeles



Calexico

Enhanced Pedestrian Infrastructure

Paint & Post
Curb Extensions

Speed Cushions & Student
Drop-Off/Pick-Up Area

Promenade/Plaza Space

Pavement paint, k-rail,
planter box trees, string
lights

TIMELINE AND LIFECYCLE

**Outreach &
Initial Design**
6 to 12 months

Implementation
Several days
to weeks

Evaluation
1 month to
3 years

**Permanent
Project or
Removal**

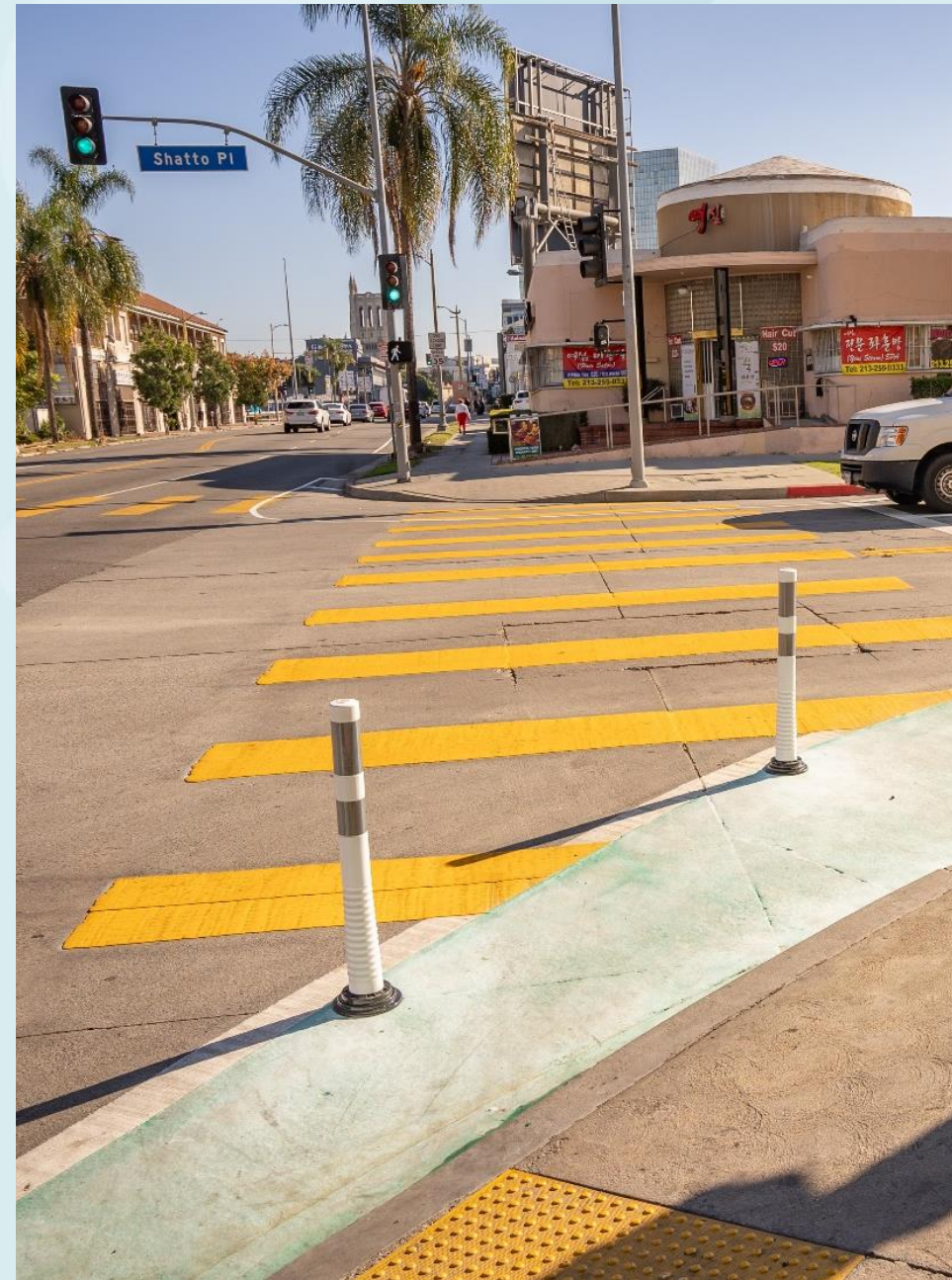
Modify Design
1 month to
5 years



KIT OF PARTS - ENGAGEMENT



KIT OF PARTS - ENGAGEMENT



LESSONS LEARNED

- **Ideally Quick-Build Project is Part of a Plan or Ongoing Program**
- **Re-Engage and Engage Again....and Again!**
- **Design approval and contractor procurement timeline x2**
- **Identify additional internal support**
- **Allow for contingencies due to cost overruns**
- **Allow for ongoing redesign/adjustments**
- **Order extra materials to ease replacement**

Q&A

Please raise your hand to ask a question or write your question into the chat.

Activate Allen Avenue

August 20, 2024

**SCAG Sustainable Communities Program
City of Pasadena**

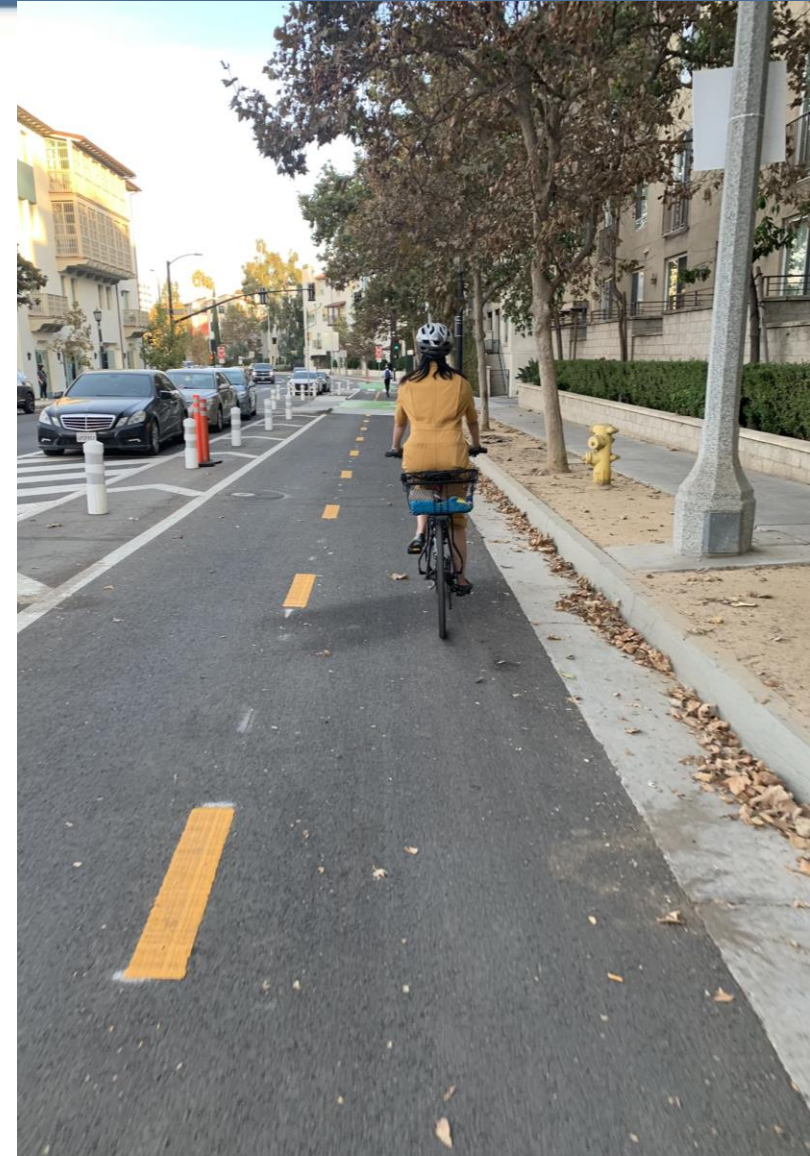




Agenda

Department of Transportation

- Activate Allen Avenue
- Project Feedback & Lessons Learned
- Incorporating Quick-Build into Future Projects





Project Area

Department of Transportation

- **Improve First/Last Mile Transit Access**
Limited walking and biking connections to transit station
- **Add Safety Enhancements**
History of crashes at major intersections
- **Active Transportation Access**
Opportunity to connect to major destinations (ex. Pasadena City College) and local stores





Allen Avenue Project History

Department of Transportation

Community Led Process to Plan, Evaluate, and Build Permanent Safety and Accessibility Improvements



Community Workshops



Community Walk Audits



Community Presentations



Activate Allen Avenue

Department of Transportation

- SCAG Grant Program Sustainable Communities
- Opportunity to Test Improvements and Gather Community Feedback
- Add Quick-Build to the City's Project Toolkit





Project Features

Department of Transportation

Enhanced Crosswalks



Pedestrian Accessibility
Enhance connections to the Metro A Line Allen Transit Station by adding high visibility continental style crosswalks

Curb Extensions



Pedestrian Improvements
Shorten crossing distances, improve visibility, and moderate vehicle turning speeds at corners with curb extensions

Bicycle Lanes

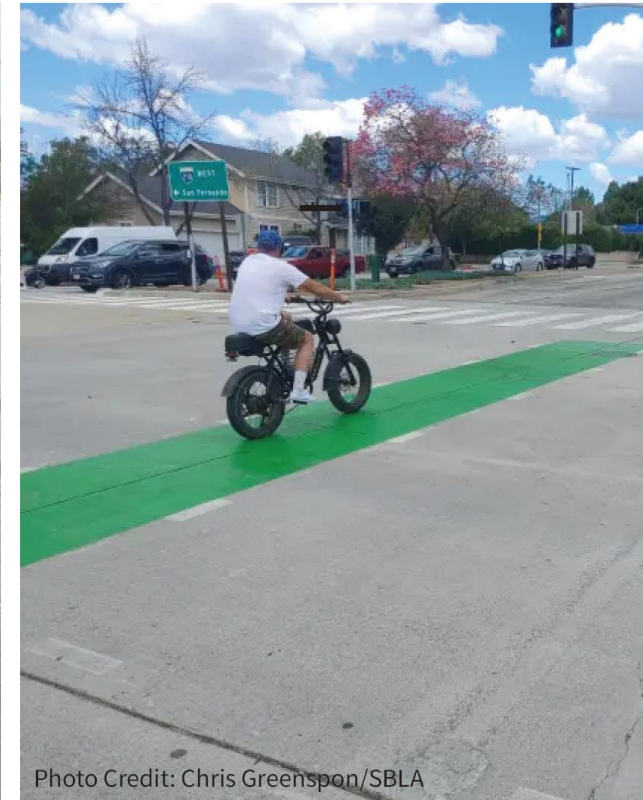


Photo Credit: Chris Greenspon/SBLA

Bicyclist Improvements
Create safer bike connections with buffered bike lanes and green crossing markings



Project Engagement

Department of Transportation

- Community Outreach
 - > Surveys
 - > Community Meetings
 - > Door to Door Conversations
- “Having more visibility crosswalks, curb extensions, bike lanes, etc. ... has dramatically improved my experience on Allen. As a transit user and pedestrian, I would not feel safe without these improvements.”
- “Yes! Very smart use of funds. Try before you buy.”

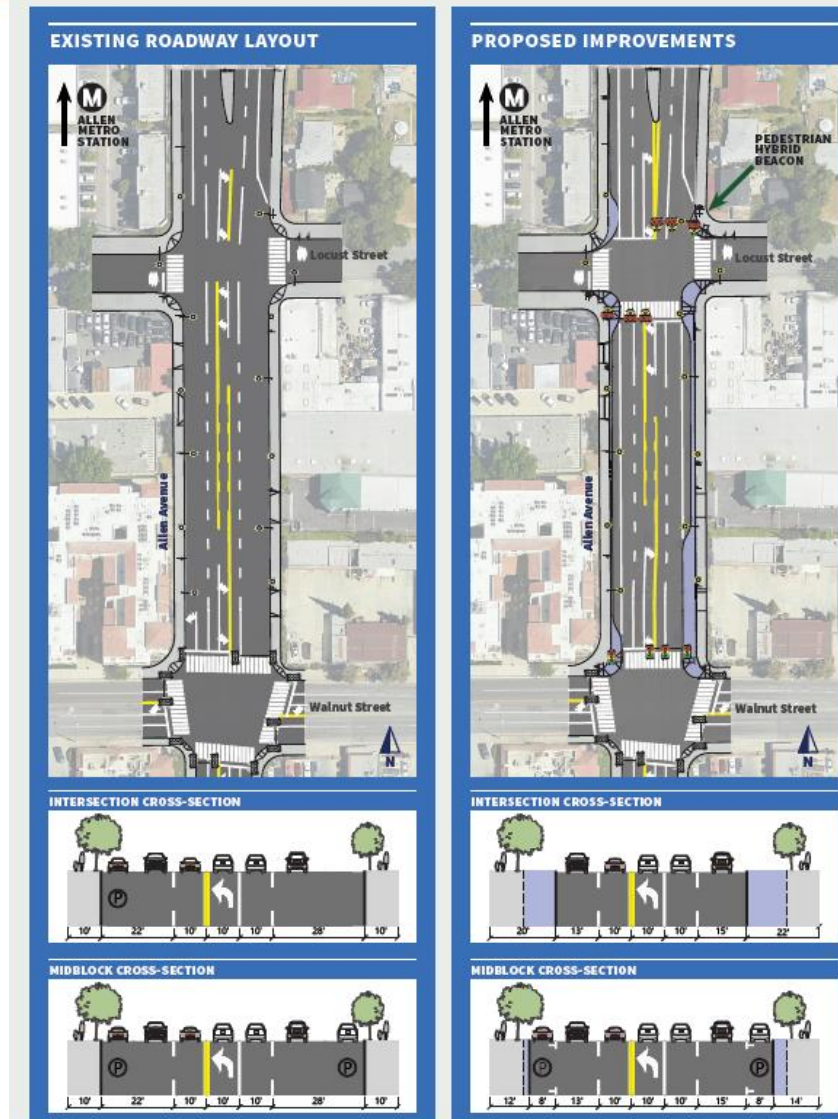
PASADENA



Permanent Improvements

Department of Transportation

- Affordable Housing & Sustainable Communities (AHSC) Grant
- Important Feedback from Community
 - > Adjust Size of Curb Extensions
 - > More Educational Materials Needed to Explain Safety Features





Using Quick-build in the Future

Department of Transportation

Purpose

Allows More Rapid Deployment

Quick to install materials are used to test out the project



Facilitates Community Feedback

Community can see, experience, and provide input on the project



Allows Robust Evaluation

Allows the project to be evaluated before more permanent installation

Process

1

Planning to Establish Community Vision

Transportation projects begin by engaging with the community to establish a planning vision and goals. This planning is further refined by developing specific projects and design concepts. Quick-build can be a useful tool to quickly test different concepts and ideas that are identified as part of the planning process.

2



Photo Credit: Toole Design

Quick-build traffic circle that could later be converted to a permanent design

Engagement & Evaluation of Planning Concepts with Quick-Build

Less expensive and quick to install material can be used to test out and evaluate transportation safety and improvements before installing the designs with more permanent materials. Quick-build allows the community to see, experience, and evaluate improvements before committing to a permanent design.

3



Traffic circle built with permanent materials with plantings

Quick-Build Informs Final Project Implementation

Community input and evaluation from the quick-build deployment is used to inform the design of permanent improvements. Permanent improvements typically are built out of concrete or other durable materials and can include additional aesthetic improvement such as plantings.



Quick-build Options

Department of Transportation

Quick-build Options

City Interested in
Trying Out Different
Quick-build Treatments
in Different Contexts

Traffic Circle



Photo Credit: Toole Design

Moderating Traffic Speeds

Mitigates vehicle speeding and reduces conflicts; significantly reduces broadside traffic crashes

Pedestrian Median



Photo Credit: City of Oakland

Enhancing Pedestrian Crossings

Improves crossing conditions and allows person walking to cross in two phases by providing a refuge area

Hardened Centerline

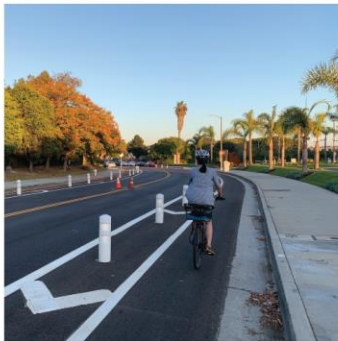


Photo Credit: NYCDOT

Upgrading Turning Safety

Moderates left turn speeds and guides vehicles to make safer and more predictable turns

Protected Bike Lane



Protecting Road Users
Establishes separated protected lanes for road users creating safer and more comfortable travel conditions

Protected Intersection

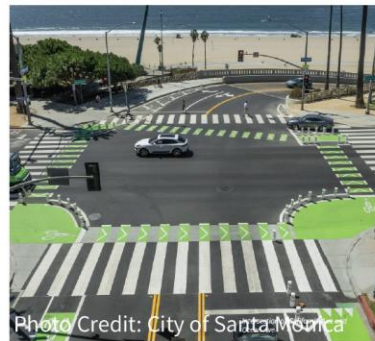


Photo Credit: City of Santa Monica

Creating Safer Intersections

Creates protected intersection corners for bicyclists to reduce conflicts between people biking and driving

Traffic Diverter



Photo Credit: BikePortland.Org

Calming Neighborhood Traffic

Reduces neighborhood vehicle cut-thru traffic while allowing people walking and biking to cross safely

Curb Extension



Photo Credit: Toole Design

Improving Intersections

Reduces crossing distance, improves visibility for road users by 'daylighting' corners, and moderates vehicle turning speeds



Thanks to SCAG

Department of Transportation

- Thanks to SCAG for developing and funding this program.
- Lessons learned from quick-build program will allow the City deliver projects faster and gather more robust community feedback.

Contact

Rdilluvio@cityofpasadena.net

Scjohnson@cityofpasadena.net



PASADENA



Thanks to SCAG

Department of Transportation

Q&A

Please raise your hand to ask a question or write your question into the chat.

PASADENA



City of Long Beach | Quick-Build Safety Improvements

Ricardo Light, *Transportation Planner III*
Department of Public Works

Why Quick-Build?

Some Upsides

- Cost
- Less Time for Design and Construction; Fewer stormwater or Civil conflicts.
- Faster build out of bike/ped network, **“Foothold” improvements.**
- Temporary; Can be modified as needs change or lessons are learned.
- Easily incorporated into regular paving projects.



Downsides?

- Aesthetics
- Maintenance and Replacement of materials.
- “Paint isn’t Infrastructure”; Compromises **Comfort for Lower Cost & Time Saving**

Quick-Build Elements

Common Types of Projects

- High-Visibility Crosswalks
- Bulb-Outs (Curb Extensions)
- Buffered Bike Lanes
- Parking-Protected or Curb-Separated Bike Lanes
- Traffic Circles
- Roundabouts
- Bus Platforms



Primary Materials

- Striping (Paint or Thermo)
- Bollards or Flex Posts
- Concrete Separator
- Rubberized Platforms or Curb Stops (e.g., ZICLA)

Parking-Protected Bike Lanes

Considerations

- Offset right turns
- Buffer width
- Educational signage
- ADA-access (especially mid-block)
- Street sweeper access



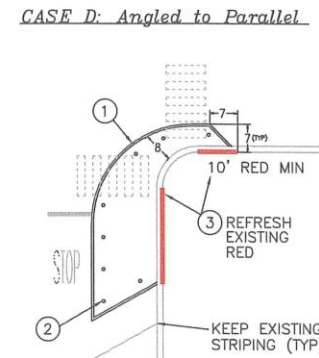
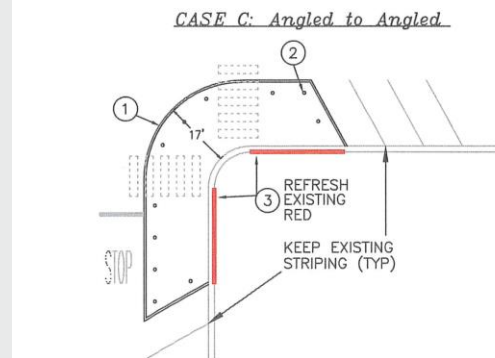
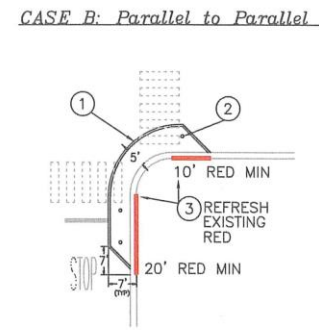
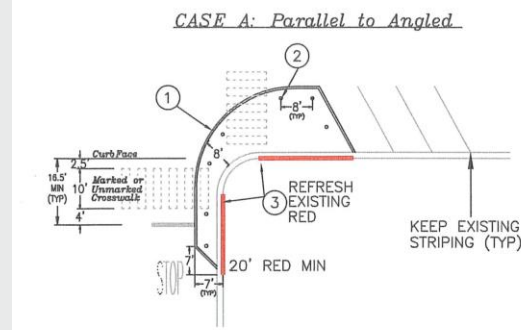
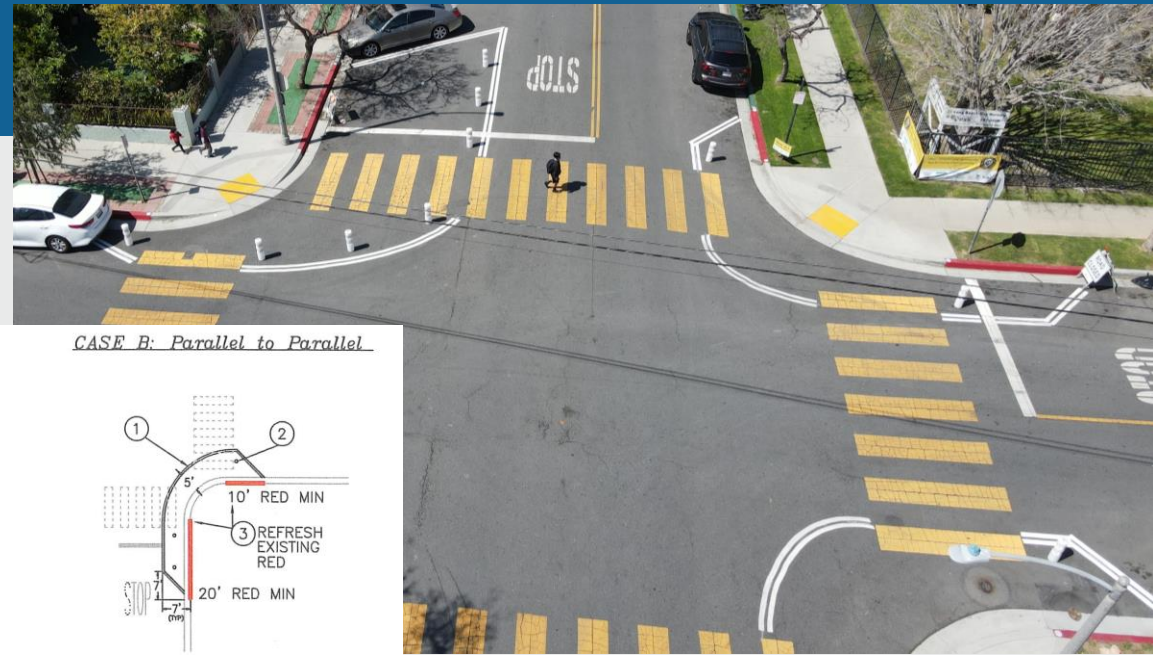
Curb-Separated Bike Lanes

- Used on existing “No Parking/Stopping” segments
- Protection on high-speed roads
- Cost comparable to plastic bollards/rubber curbs



Bulb-Outs (Curb Extensions)

- Relatively inexpensive
- Reduced vehicle speeds & turning speeds
- Reduced crosswalk distance
- Creates space for art
- Self-enforcing Daylight zones
- Community ownership – neighbors are more likely to reinforce social norm of parking outside of the mural.



Roundabouts & Traffic Circles

- 6" Asphalt Curb
- 50' Diameter; 14' Travel Lane
- Curb extensions





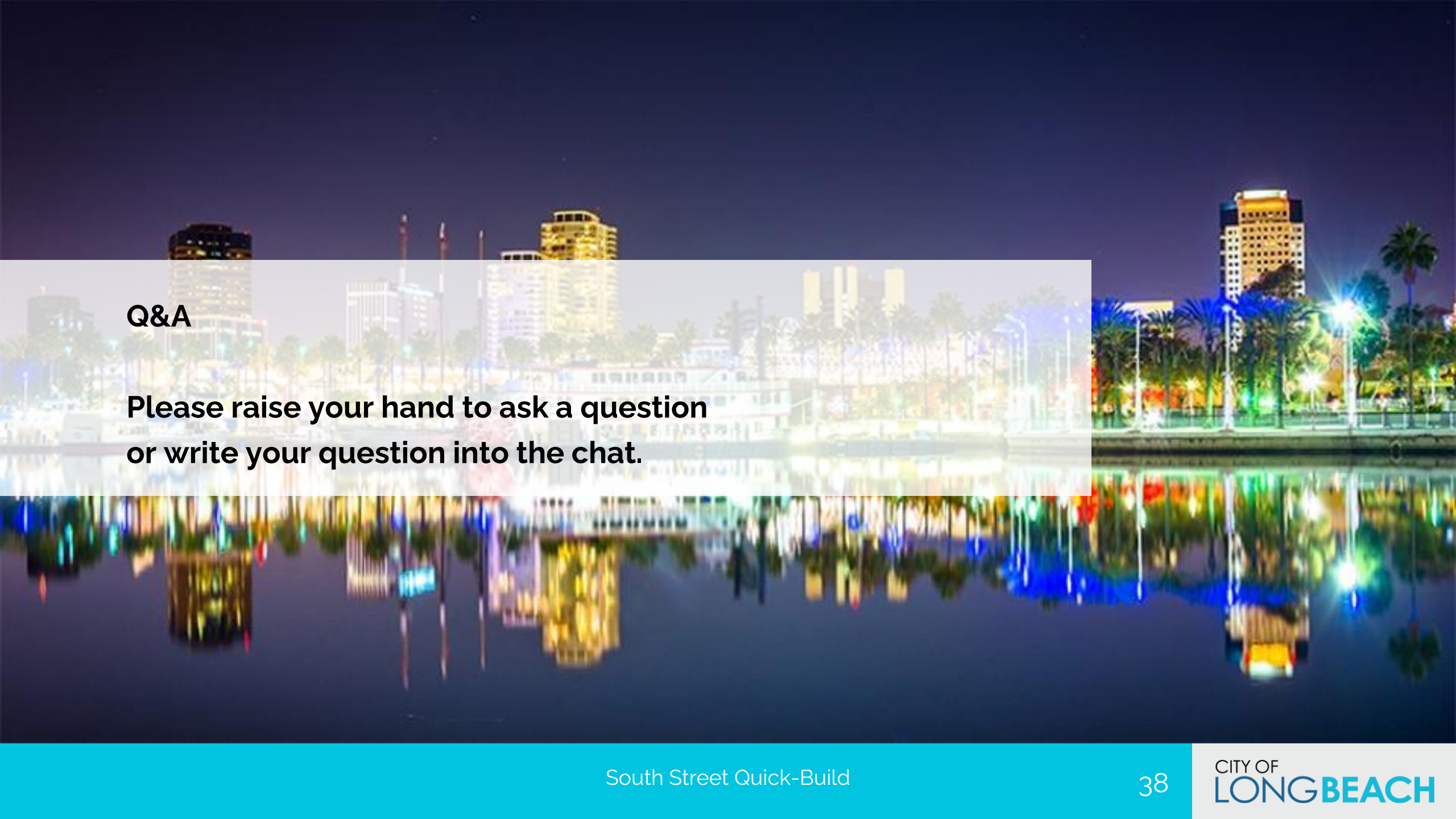
Thank you

Paul Van Dyk, City Traffic Engineer

Paul.VanDyk@longbeach.gov

Ricardo Light, Transportation Planner III

Ricardo.Light@longbeach.gov

A nighttime photograph of a city skyline reflected in water. The scene includes several tall buildings, palm trees, and streetlights, all illuminated and their lights reflected in the calm water below. A semi-transparent white box is overlaid on the left side of the image, containing text.

Q&A

**Please raise your hand to ask a question
or write your question into the chat.**

Caltrans District 8

QUICK-BUILD

SCAG TOOLBOX TUESDAY



Reyna Baeza-Oregel, Alexa Pok, Cuong Trinh | August 20, 2024



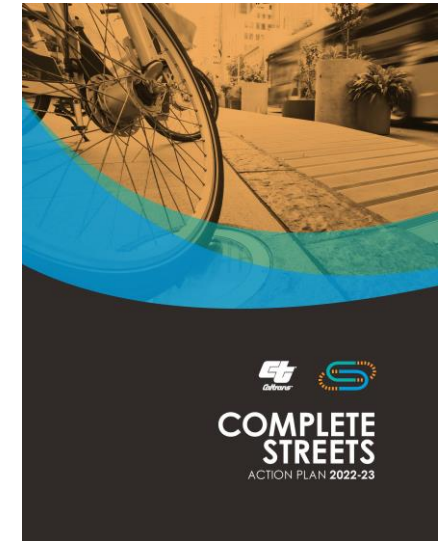
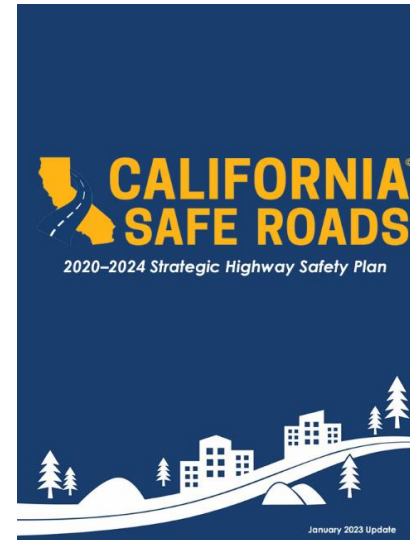
Presentation Outline

- Caltrans and Quick-Build: Plans and Policies Alignment
- Smart Growth America
 - Lessons Learned
- D8 Quick-Build Guidance
 - Objectives and Outcomes
 - Implementation by Others
- Guidance Challenge Areas
 - Quick-Build Materials
 - Maintenance Concerns
- Future of Quick-Builds on the State Highway System



Caltrans & Quick-Build Plans and Policies Alignment

- **Strategic Highway Safety Plan (SHSP)**
- **Active Transportation Program (ATP) Quick Build Pilot Program**
- **Complete Streets Action Plan (CSAP)**



Smart Growth America (SGA)

- **SGA Complete Streets Leadership Academy**

- HQ, D4 effort & District 8 participation
- Encroachment Permit Process
- On SHS
- Berkeley
- San Leandro
- South San Francisco



Smart Growth America
Improving lives by improving communities



National Complete Streets Coalition



Smart Growth America (SGA)

- **Berkeley**
- **South San Francisco**
- **San Leandro**



SGA Lessons Learned

- Opportunities to improve the Caltrans approval process
- Communication between parties is critical
- Leverage available transportation funding resources

QB Guidance – Objectives & Outcomes

- **Objectives**

- District Guidance and Process for Quick-Build Implementation
- Materials List
- Quick-Build Funding Opportunities
- Promote robust and meaningful engagement

- **Outcomes**

- Interim strategies leading to viable implementable solution
- Will lead to implementation of a permanent installation

QB Guidance – Implementation by Others

- Locally-sponsored projects on the SHS
- Encroachment Permit Process
- Maintenance Agreement
- Maintenance Plan



Separated bikeway, SR-33/Maricopa Hwy Ojai, CA.
Caltrans D7

Guidance Challenge Area



Quick-Build Materials

- Limited approved materials
- New materials require review & approval process
- Design flexibility
- Engineering judgement



Guidance Challenge Area



Maintenance Concerns

- Material durability
- Temporary installations
- Specialized maintenance equipment
- Resource allocation
- Maintenance Plan and Maintenance Agreements



The Future of Quick Builds

- **SCAG & Caltrans – Regional QB Coordination**
 - SoCal Region
 - Multi-district focus - Districts 7,8,11 & 12
(Los Angeles, Ventura, San Bernardino, Riverside, Orange, San Diego, Imperial Counties)
 - Potential coordination efforts
 - Explore partnership opportunities for QB projects
 - Focus on the SHS / Caltrans facilities



Reyna Baeza-Oregel – D8 Sustainability Manager

Alexa Pok – D8 Complete Streets Coordinator

Cuong Trinh – D8 Active Transportation Portfolio Manager

Please send Quick Build feedback to:

D08.Sustainability@dot.ca.gov





Q&A

Please raise your hand to ask a question or write your question into the chat.



2024 SCP Active Transportation and Safety

- Funds projects that primarily help advance the Connect SoCal 2024 mobility policies under:
 - Complete Streets
 - Transit and Multimodal Integration
 - Safety
- \$6.3 million available across two project types:
 - **Quick-Builds**
 - Community / Areawide Plans



Project Types



Community / Areawide Plans

Maximum Award: \$500,000

Eligibility requirements:

- ✓ Community Plans must encompass, be located in, or overlap with a disadvantaged community
- ✓ Areawide Plans must encompass at least one disadvantaged community



Quick-Build Projects

Maximum Award: \$900,000

Projects *must*:

- ✓ Engage the community before and after implementation
- ✓ Be in place for at least six months before conducting evaluation

* Quick-Build projects are not required to be located in a disadvantaged community


Eligible Applicants

- Local or Regional Agency
- Caltrans
- Transit Agencies
- Natural Resources or Public Land Agencies
- Public schools or school districts
- Tribal Governments
- Private nonprofit, tax-exempt organizations that are responsible for the management of public lands

Application Resources

- All resources are linked in the Applicant Resources section of the [SCP website](#)
 - Guidelines
 - Templates
 - Evaluation Criteria
 - Workshop recordings
 - Office hours appointments

Applicant Resources

- Program Guidelines
-  SCP-Active Transportation and Safety Factsheet
- Online Application 
-  Application Resources
-  Application Questions and Evaluation Criteria
-  Application Questions and Evaluation Criteria
-  Scope of Work
-  Budget Template

Application Timeline





Q & A

Please raise your hand to ask a question or write your question into the chat.



THANK YOU!

For more information, please visit:

<https://scag.ca.gov/sustainable-communities-program>

<https://scag.ca.gov/toolbox-tuesday>