

THE 2020-2045 REGIONAL TRANSPORTATION PLAN/
SUSTAINABLE COMMUNITIES STRATEGY OF THE
SOUTHERN CALIFORNIA ASSOCIATION OF GOVERNMENTS



Summary of Connect SoCal



The plan...

- Is a **transportation infrastructure investment strategy** that will impact Southern California, and beyond.
- Invests over **\$638 billion on transportation improvement projects**.
- Encourages locating housing, jobs, and transit closer together in **priority growth areas** while preserving natural lands and open spaces.
- **Links the built environment and transportation system** with policies, projects, and programs that strengthen and enhance each other beyond what each would accomplish in isolation.
- **Delivers significant benefits to the region** with respect to mobility, safety, health outcomes, travel time reliability, air quality, economic productivity, environmental justice, and transportation assets.
- **Generates approximately 432,900 jobs annually**.



COMPASS

NOT A ROADMAP



VISION

NOT A GUARANTEE



PLATFORM

FOR REGIONAL COLLABORATION
AND PARTNERSHIPS

120-Day Work Plan



In May, the Regional Council adopted Connect SoCal for federal transportation conformity purposes only and directed staff to complete a number of tasks before returning for full adoption.





What did we learn?

- Top noted impacts:
 - Lack of income to pay rent/mortgage
 - Increased vehicle speeds on local roads
- Long-term concern
 - Government funding for services and programs.
 - Persistent unaddressed inequities



88% of respondents believe Connect SoCal goals still important or more important in light of COVID-19.



Potential Economic Impacts of COVID-19 in the SCAG Region
May 14, 2020

Snapshot of COVID-19 Transportation Impacts in the SCAG Region
August 2020

IN DEVELOPMENT

HOUSING PRODUCTION STUDY

SHORT-TERM
 willing households, willing budget, ability to pay rent

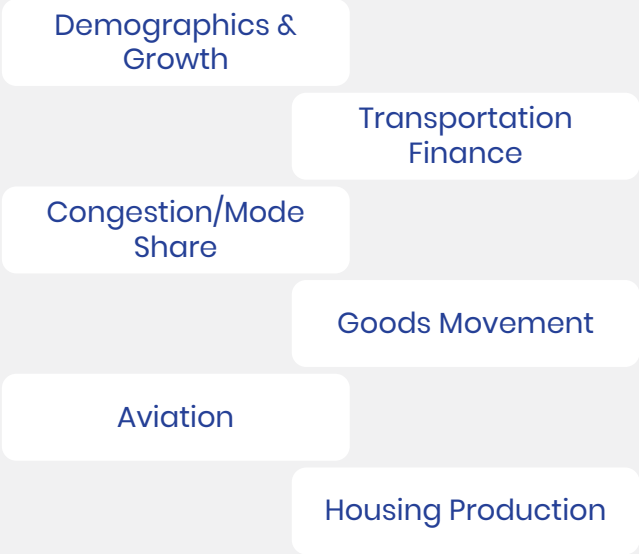
LONG-TERM
 financial resources, changing preferences

EFFECTS OF COVID-19
BEST PRACTICES
 rapid shift to digital, anti-lockdown resilience

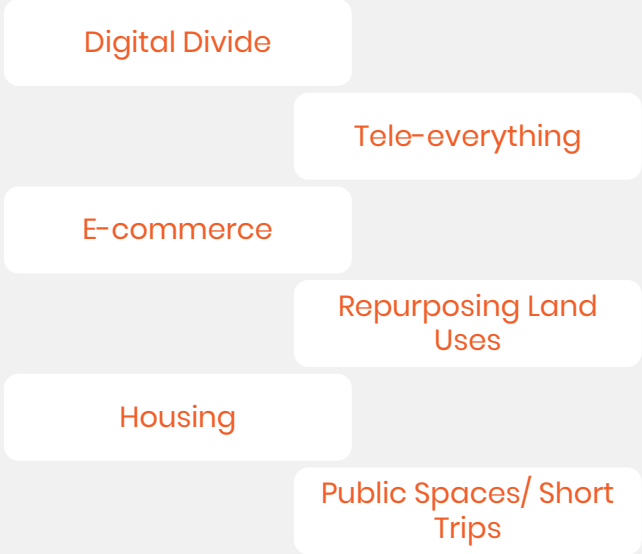
2024 Connect SoCal Emerging Issues Outlook



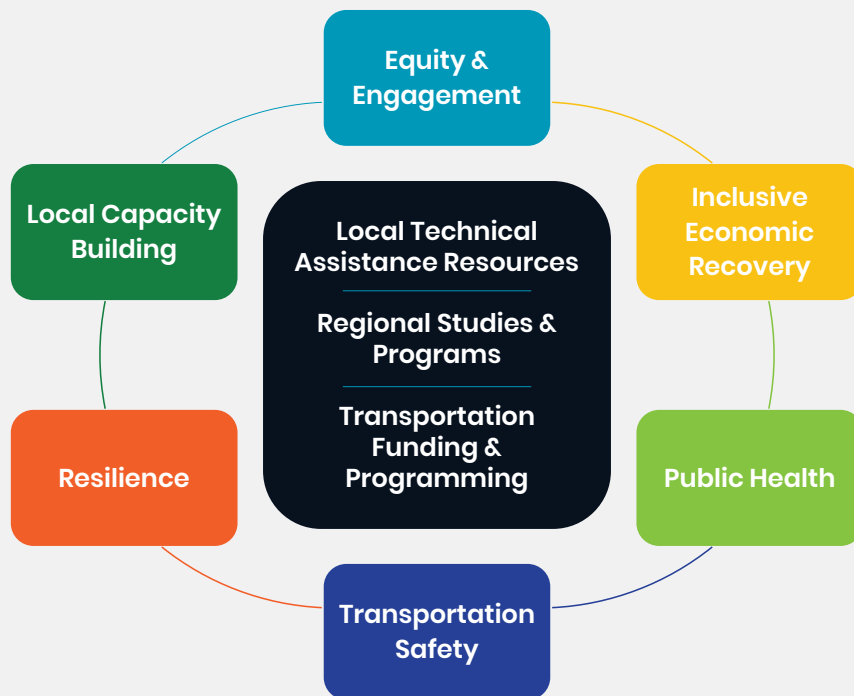
Data & Trends



Emerging Issues



Connect SoCal Implementation Strategy



Connect SoCal Implementation Strategy

Local Technical Assistance Resources



Sustainable Communities Program



Housing Program



Call for Collaboration



Go Human

Connect SoCal Implementation Strategy

Regional Studies & Programs



CORE VISION



COMPLETE STREETS INVESTMENT



DEMAND & SYSTEM MANAGEMENT



GOODS MOVEMENT



SUSTAINABLE DEVELOPMENT



SYSTEM PRESERVATION & RESILIENCE



TRANSIT BACKBONE

KEY CONNECTIONS



SHARED MOBILITY & MOBILITY AS A SERVICE



SMART CITIES & JOB CENTERS



ACCELERATED ELECTRIFICATION



GO ZONES



HOUSING SUPPORTIVE INFRASTRUCTURE



Data Refinements

- Modeling data updated to capture growth from entitled projects as conveyed by local jurisdictions.
- Refinements not regionally significant:
 - .08% of region's 7.6M households
 - .33% of region's 10M jobs (in 2045)
- Jurisdictional level growth totals were held constant with the May 7, 2020 Connect SoCal.



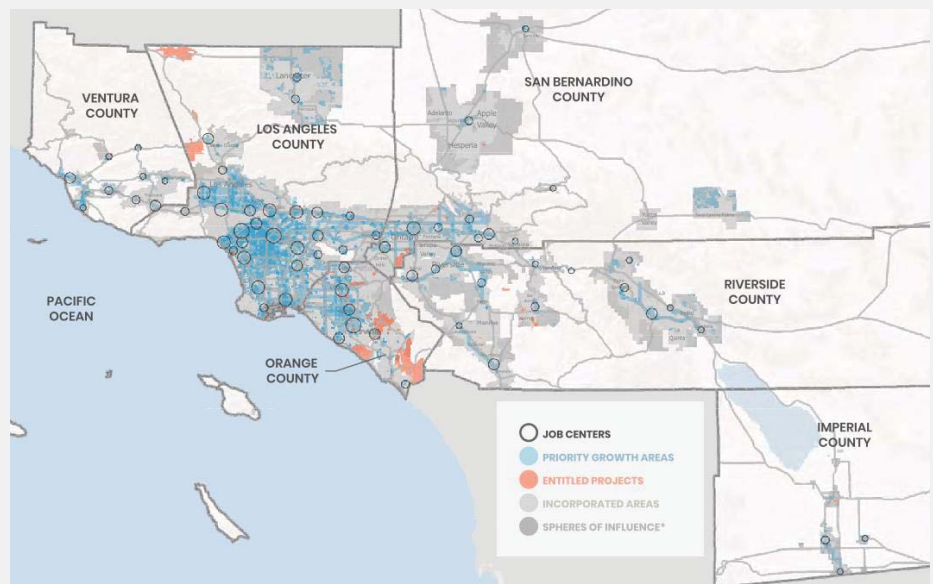
Outcomes

- Achieves federal air quality standards and meets state GHG reduction targets.
- No change in the per capita GHG from adopted Plan.
- Over 75% of the modeling results remain unchanged.
- Most performance areas impacted show improvement from the May 2020 modeling results.

Clarifications



- Plan does not supersede local authority on land use.
- Forecasted Regional Development Pattern reflects regional policies and strategies.
- Growth Forecast policies emphasize the non-binding, advisory nature of the TAZ-level data, and clarify the limits of SCAG's authority with respect to the use of the data.



Benefits of Plan Implementation

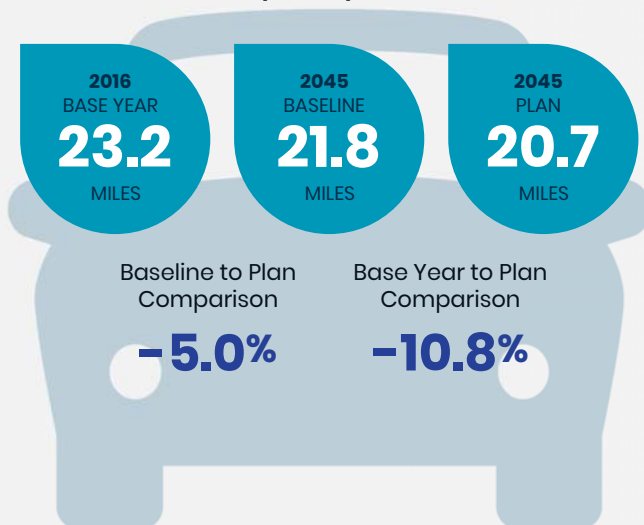


Connect SoCal Policy Areas	Anticipated Growth (2016-2045)	Connect SoCal (September 2020)
Priority Growth Areas	Households	64%
	Employment	74%
Absolute Constrained Areas	Households	10%
	Employment	9%
Variable Constrained Areas	Households	47%
	Employment	43%

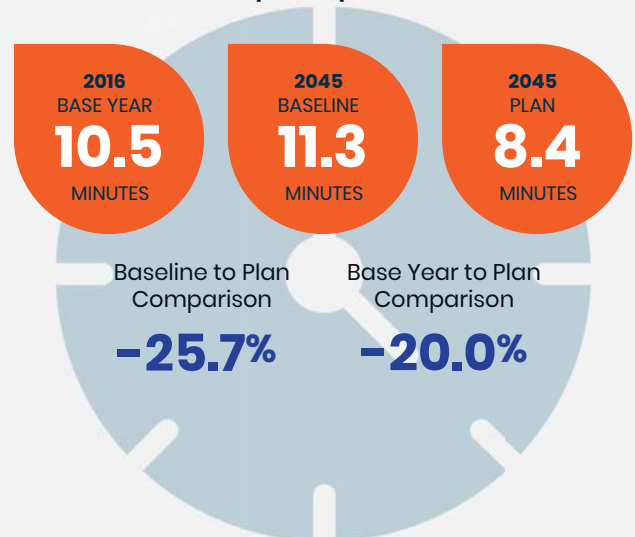
Benefits of Plan Implementation



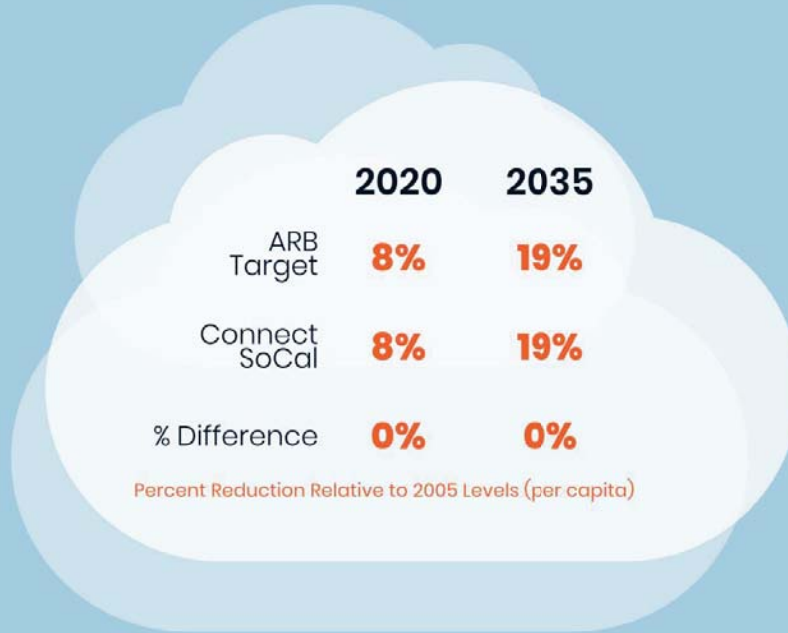
Reduced Daily Vehicle Miles Traveled (per capita)



Reduced Daily Minutes of Delay (per capita)



Benefits of Plan Implementation



Connect SoCal PEIR Addendum



- SCAG prepared a PEIR Addendum based on technical refinements and responses to comment letters received from the Center of Biological Diversity (CBD).
- Addendum determined that the technical refinements, clarification and addition of information requested by CBD does not affect the analyses in the Final PEIR.
- Mitigation measures were refined, and staff prepared a Revised Mitigation Monitoring and Reporting Program (MMRP).
- As there are no new impacts, SCAG determined that a subsequent or supplemental PEIR would not be required.

Key Points



- SCAG has **listened closely to stakeholder concerns**, conducting extra rounds of stakeholder outreach and incorporating technical refinements.
- Further **delay threatens economic recovery** by making the region ineligible for state transportation funds, including ~\$1.4 billion in current funding requests.
- Connect SoCal has been **approved by the FHWA and FTA** and it **fully achieves state greenhouse gas reduction targets**.
- Connect SoCal adoption **allows the RHNA process to move forward** and supports local compliance.
- Centering plan implementation on **equity, inclusive economic recovery, public health, transportation safety, resilience, and local capacity building** provides opportunities to address short- and long-term impacts of the COVID-19 pandemic.
- **Connect SoCal is a living document**, subject to amendment and updated every four years, ready to evolve to address the needs of a constantly changing world.

17



Questions? Comments?

Read the plan at
www.connectsocial.org



18

Action Item



Joint Policy Committees: Recommend that the Regional Council adopt Resolution No. 20-624-1 to (1) adopt the 2020-2045 Regional Transportation Plan/ Sustainable Communities Strategy (Connect SoCal or Plan) Program Environmental Impact Report (PEIR) Addendum and Revised Mitigation Monitoring and Reporting Program; (2) approve Connect SoCal in its entirety; and (3) submit Connect SoCal to the California Air Resources Board (ARB) for confirmation that the Plan meets greenhouse gas (GHG) reduction targets.

19

Action Item



Regional Council: Adopt Resolution No. 20-624-1 to (1) adopt the Connect SoCal PEIR Addendum and Revised Mitigation Monitoring and Reporting Program; (2) approve Connect SoCal in its entirety; and (3) submit Connect SoCal to ARB for confirmation that the Plan meets GHG reduction targets.

20