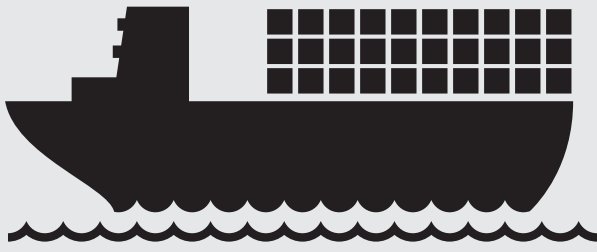


GOODS MOVEMENT IN SOUTHERN CALIFORNIA*

BY THE NUMBERS



#1

SOUTHERN CALIFORNIA has the LARGEST CONTAINER PORT COMPLEX in the UNITED STATES

#8

and has the 8TH LARGEST CONTAINER PORT COMPLEX in the WORLD

SOUTHERN CALIFORNIA HAS **3,747 MILES** OF FREEWAYS & HIGHWAYS (that is 41% of all the freeway & highway road miles in California)

\$12 BILLION IN CA/MEXICO TRADE IN 2011 through three land ports of entry in the SCAG region

#3

THE SCAG REGION IS THE THIRD LARGEST MANUFACTURING CENTER IN THE COUNTRY, AFTER THE STATE OF CA & TX

MANUFACTURING contributed over **\$91 BILLION** TO THE GROSS DOMESTIC PRODUCT IN 2010

2 CLASS 1 RAILROADS **6** INTERMODAL RAIL YARDS**

** Not including carload and automobile terminals

2.9 MILLION

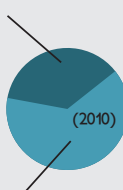


were generated by Goods Movement dependent industries in 2010

\$2,000,000,000,000 the approximate value of the 15 BILLION tons of goods that moved through Southern California* in 2010

\$249 BILLION from GOODS MOVEMENT DEPENDENT INDUSTRIES

ONE THIRD of Southern California Economy Contributed by Goods Movement Dependent Industries



\$730 BILLION GROSS REGIONAL PRODUCT OF SOUTHERN CALIFORNIA

If trucks stop running today...

1-3 DAYS Fresh & Frozen Products Gone

2 DAYS Egg & Milk Products Gone

7 DAYS Dry Goods Gone

7 DAYS

STORE SHELVES COMPLETELY EMPTY IN

↑ WHERE WE ARE TODAY ↑

↓ WHERE WE WILL BE IN 2035 WITHOUT INVESTMENTS ↓

If Southern California were a state, it would be the 5th largest.

#1	CALIFORNIA	37 MILLION	
#2	TEXAS	25 MILLION	
#3	NEW YORK	19.4 MILLION	
#4	FLORIDA	18.8 MILLION	
#5	SCAG REGION	18 MILLION	



And it's getting bigger...

22.1 MILLION are expected to live in the SCAG region by 2035

369.7 MILLION are expected to live in the United States by 2035



BY THE YEAR 2035 **DOUBLING & TRIPLING** OF FREIGHT & PASSENGER RAIL VOLUME DEMAND

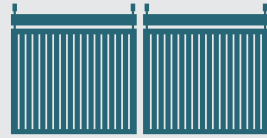
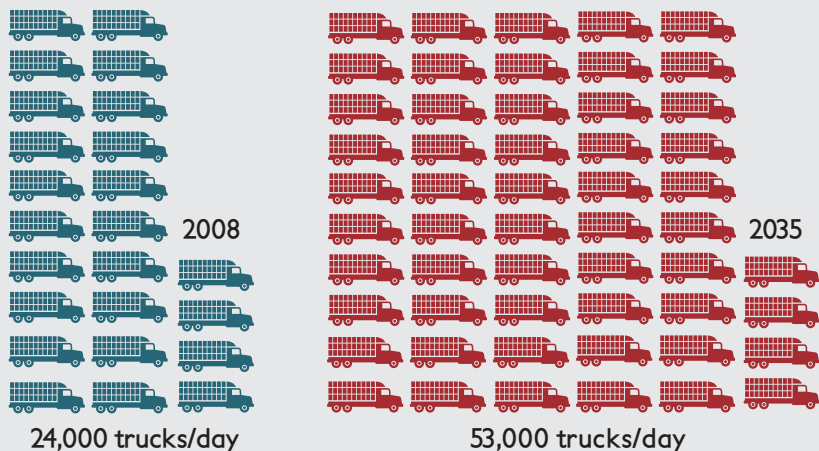
269% GROWTH in vehicle hours of delay per day at rail-highway grade crossings across the region by 2035



837 MILLION SQUARE FEET OF WAREHOUSING SPACE (2008)

BY 2035 SCAG WILL NEED **1.25 BILLION SQ FT** = 44.8 SQ. MI. = HALF THE LAND OF SEATTLE

80% increase in truck vehicle-miles-traveled (VMT) on the regional highways. Example of Truck Volume Increase on a segment of I-710 per day.



14 million TEUs in 2010

CARGO moving through SAN PEDRO BAY PORTS



42 million TEUs in 2035

\$2,600,000,000

COST OF WASTED LABOR HOURS & FUEL FROM TRUCK CONGESTION ON HIGHWAYS (2010)

ANNUAL COST OF AIR POLLUTION IN THE SCAG REGION IS AT LEAST **\$14.6 BILLION**

47% of NOx emissions in South Coast Air Basin came from GOODS MOVEMENT sources (2008)

AFTER IMPLEMENTING POLLUTANT REDUCTION MEASURES, SOUTHERN CALIFORNIA NEEDS TO ELIMINATE **208 TONS/DAY** of NOx EMISSION TO MEET FEDERAL REQUIREMENTS

see reverse for our STRATEGIES

*Includes six counties: Imperial, Los Angeles, Orange, Riverside, San Bernardino, and Ventura

NEARLY \$60 BILLION IN INVESTMENTS NEEDED

HIGHWAY INVESTMENTS



11
PERCENT

TRUCK DELAY REDUCTIONS

MOBILITY

4.3
PERCENT

ALL TRAFFIC DELAY REDUCTIONS

from the East-West Corridor portion of the Regional Clean Freight Corridor System.

ELIMINATE
50 truck bottlenecks across the region.

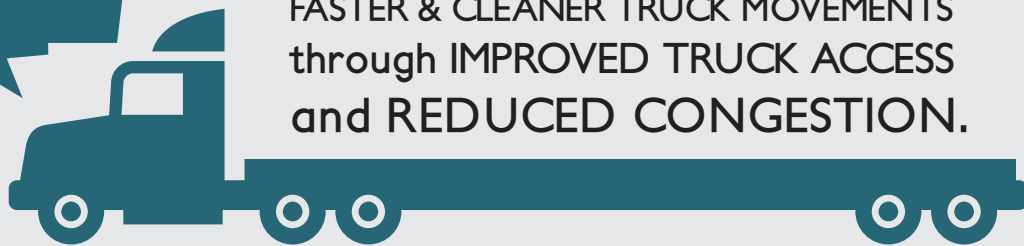
= 1 million less hours of heavy-truck delay

SAFETY



REDUCTIONS IN TRUCK/AUTOMOBILE ACCIDENTS

CLEAN



FASTER & CLEANER TRUCK MOVEMENTS through IMPROVED TRUCK ACCESS and REDUCED CONGESTION.

Clean Technology Application to REDUCE TRUCK EMISSIONS

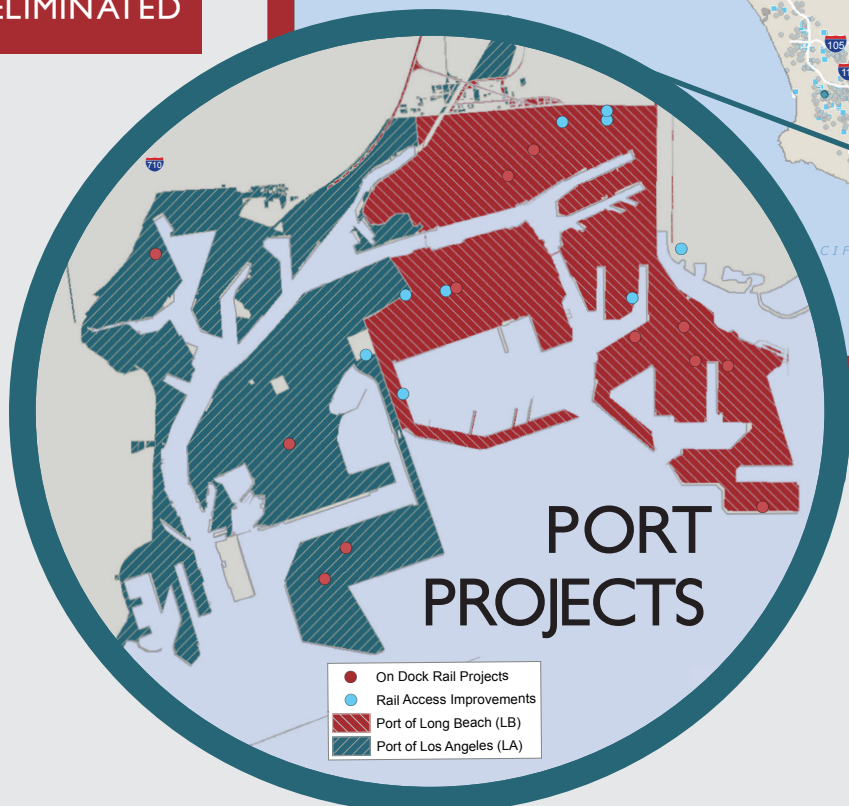
REDUCES 22,789 LBS of EMISSIONS per day & 5,782 HRS OF DELAY

SAFER AND CLEANER

71

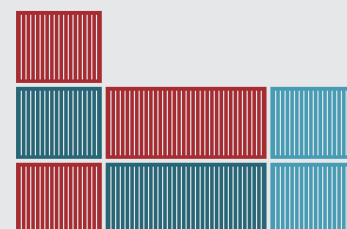
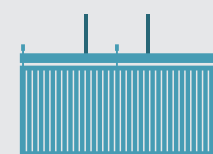
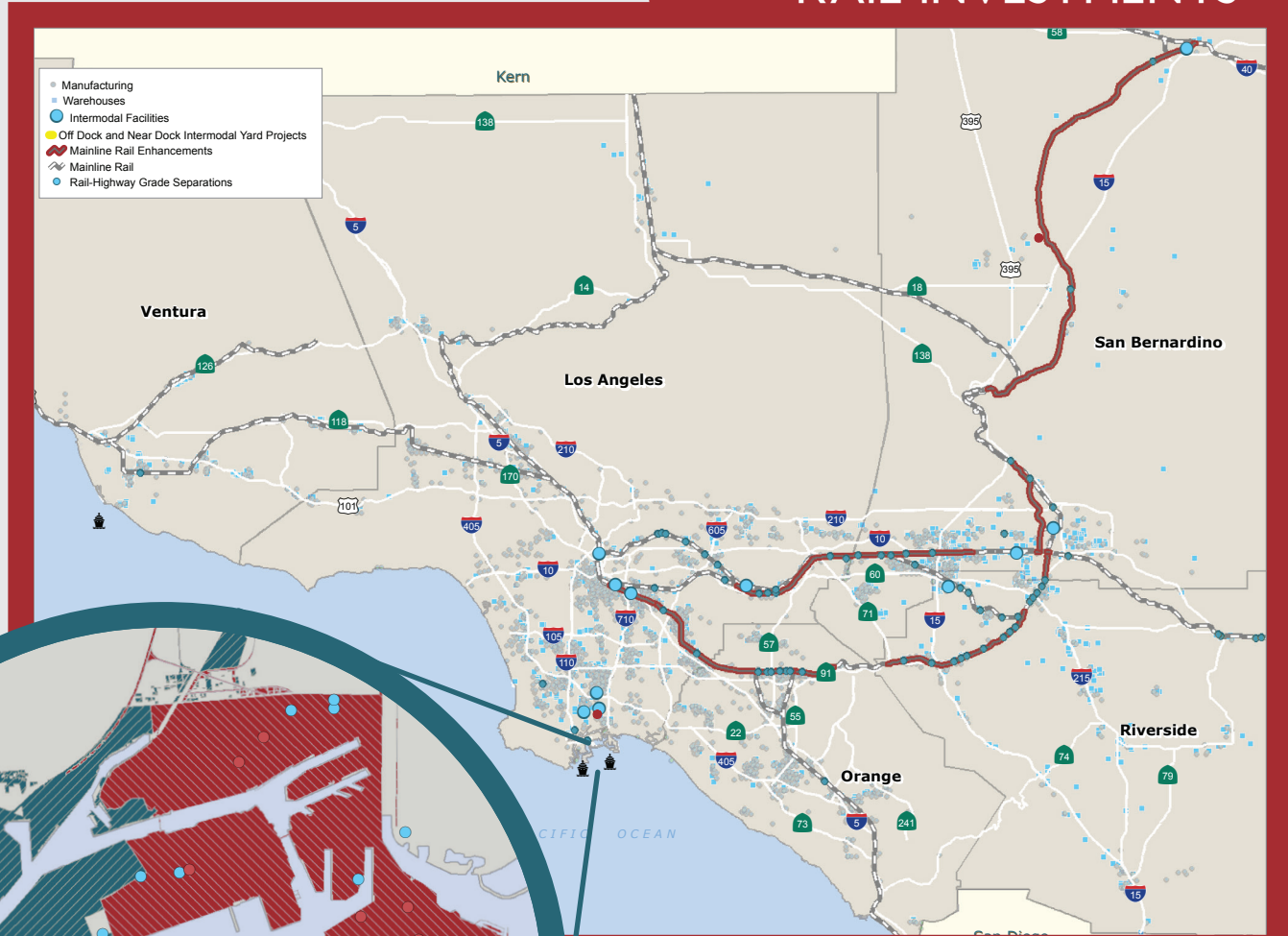
AT GRADE CROSSINGS ELIMINATED

ON-DOCK AND NEAR-DOCK RAIL improvements to REDUCE TRUCK TRIPS out of the ports.



PORT PROJECTS

RAIL INVESTMENTS



MAINLINE & INTERMODAL TERMINAL CAPACITY IMPROVEMENTS to ensure CONNECTIVITY & SERVICE for the rest of THE NATION.

FOR MORE INFORMATION, GO TO SCAG.CA.GOV/GOODSMOVE