

Emerging Technology

Regional Implications of the New Tomorrow

Marco Anderson

Program Manager, Sustainability Department

July 24, 2019



Agenda



1. Technical Approach
2. Policy Approach
3. Implementation

New Mobility -- 2016



GHG REDUCTIONS FROM MOBILITY INNOVATIONS 2040 ZERO-EMISSION VEHICLE (ZEV)

1.0% NEIGHBORHOOD ELECTRIC VEHICLE (NEV)

0.1% CARSHARING/ RIDESOURCING

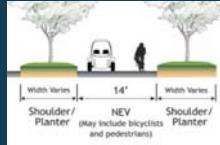
0.9%



16% of Uber trips in LA started or ended near a Metro Station



22% of those trips took place during peak commute times (7-10am & 4-7pm, M-F)



New Mobility -- 2020



Research Questions



- What is happening in the private & public sectors?
- How can SCAG collect data and model these innovations?
- If these innovations produce outcomes that work against our regional goals, how do we develop and encourage policies?



Emerging Technologies Discussed

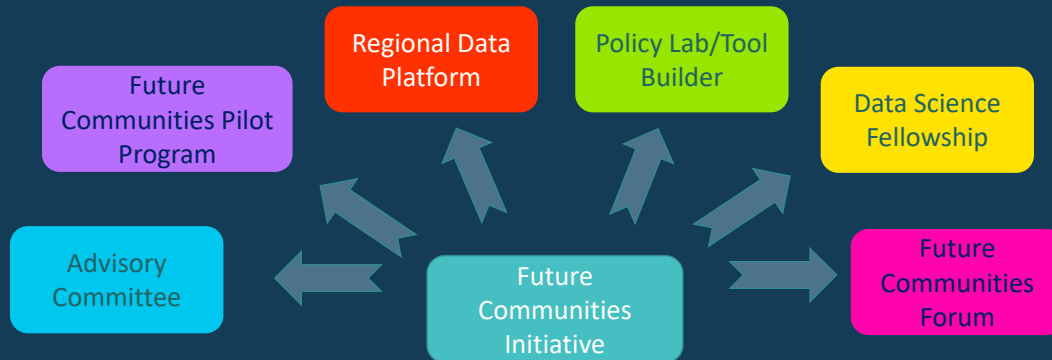


Existing & Near-term Emerging Technologies

- Alternative Fuel Vehicles*
- Carshare*
- Bike Share / Micromobility*
- Neighborhood Electric Vehicles
- Smart Parking
- Transportation Network Companies (TNC)
- Transit / TNC partnerships

- Microtransit
- Mobility as a Service (MaaS)
- Advanced ITS – Connected Vehicles
- Goods Movement Technologies
- Medium to Long term technologies
- Automated / Connected Vehicles
- Hyperloop
- Vertical Take Off and Landing

Future Communities Initiative: Program Details



Partnership Framework

- SCAG launched a 3-year, \$8M initiative to advance priority projects
- The initiative will leverage public/private funds, including \$4.5M in SCAG resources
- Projects will be administered by SCAG leveraging existing relationships and programs with cities/counties

Agenda



1. Technical Approach
2. Policy Approach
3. Implementation

What Stakeholders Have Asked For



Main Themes:

- Mobility
- Accessibility
- Public Health/Safety
- Climate Change



San Francisco's Guiding Principles



TEN GUIDING PRINCIPLES



Collaboration

Emerging Mobility Services and Technologies must collaborate with each other and the community to...



Congestion

Emerging Mobility Services and Technologies must consider the effects on traffic congestion, including the resulting impacts on road safety, modal choices, emergency vehicle response time, transit performance and reliability.



Safety

Emerging Mobility Services and Technologies must support San Francisco's goal for achieving Vision Zero safety.



Sustainability

Emerging Mobility Services and Technologies must support sustainability, including helping to meet the city's greenhouse gas (GHG) emissions reduction goals, promote use of all non-auto modes, and support efforts to increase the...



Transit

Emerging Mobility Services and Technologies must account for the operational and occupancy modes.



Equitable Access

Emerging Mobility Services and Technologies must ensure equitable access for all users, regardless of age, race, color, gender, disability, language, or any other protected category, and for groups who have historically benefited most.



Labor

Emerging Mobility Services and Technologies must ensure fairness in pay and labor policies and practices. Emerging Mobility Services and Technologies should support San Francisco's local hire principles, promote equitable job training opportunities, and maximize procurement of goods and services from disadvantaged business enterprises.



Disabled Access

Emerging Mobility Services and Technologies must be inclusive of persons with disabilities. Those who require accessible vehicles, physical access points, services, and technologies are entitled to receive the same or comparable level of access as persons without disabilities.



Accountability

Emerging Mobility Services and Technologies must ensure that the public can effectively evaluate the system and determine whether...



Financial Impact

Emerging Mobility Services and Technologies must promote a positive financial impact on the City's infrastructure investments and delivery of publicly-provided transportation services.

Common Proposed Policies



- Road Pricing
 - Layered pricing to include congestion pricing, and high zero-occupancy pricing
- Integrated Payment Systems
- Reform Parking Requirements
 - Design future parking for flexible use
- Smart Growth policies to mitigate AV induced sprawl
- Job Centers Concept to reduce commute mileage
- Require more private sector data sharing
- Smart curb space management



Agenda



1. Technical Approach
2. Policy Approach
3. Implementation

Policy Integration



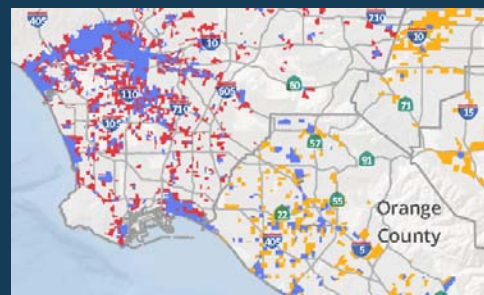
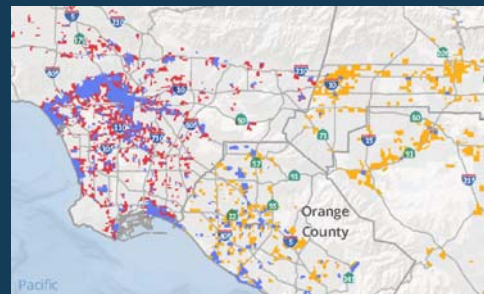
- Land-Use
- Street Design
- Pricing and System Management



Land-Use & Sustainability



- Neighborhood Mobility Areas
- Identified TAZ's with
 1. High number of intersections
 2. Low observed travel speeds
 3. High mix of uses
 4. High accessibility to "everyday" destinations



Land-Use and New Mobility



Neighborhood Mobility Areas

Employ Complete Streets strategies:

- Bike lanes, roundabouts, wider sidewalks and better lighting,
- Connected network of low-speed lanes
- Neighborhood design

Shift short trips to Non-SOV modes.



Street Design & New Mobility



Street Design & New Mobility



human

Go with the flow.

Ride in bike lanes, not sidewalks.



System Management & Sustainability

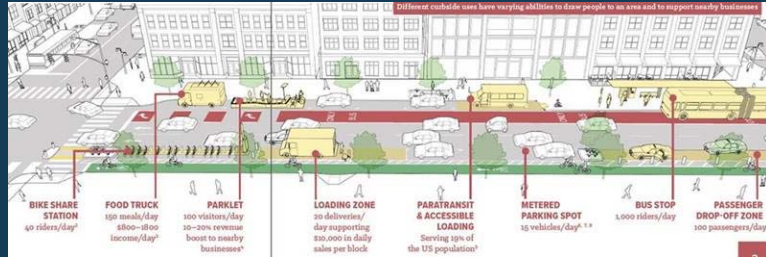


Regional Express Lane Network



Pricing Strategies

System Management & New Mobility



Curbside Management

4 MPO Future Mobility Research Program



- Research Products:
 - Off-Model Calculators for Carshare, BikeShare, Microtransit etc.
 - Modeling approach for automated vehicles
 - Currently conducting travel surveys of ridehailing users



Final Thoughts



- How do we frame all of these decisions through an equity lens?
 - Both in terms of who pays?
 - And who benefits?
- How do we assist our jurisdictions in adapting to the pace of change?
- How do we leverage gains we've made in livability to craft this new future of mobility?



Thank You

Marco Anderson
Sustainability
anderson@scag.ca.gov

For more information visit www.scag.ca.gov

