



SOUTHERN CALIFORNIA  
ASSOCIATION OF GOVERNMENTS  
900 Wilshire Blvd., Ste. 1700  
Los Angeles, CA 90017  
T: (213) 236-1800  
[www.scag.ca.gov](http://www.scag.ca.gov)

#### REGIONAL COUNCIL OFFICERS

President  
**Bill Jahn, Big Bear Lake**

First Vice President  
**Rex Richardson, Long Beach**

Second Vice President  
**Clint Lorimore, Eastvale**

Immediate Past President  
**Alan D. Wapner, San Bernardino  
County Transportation Authority**

#### COMMITTEE CHAIRS

Executive/Administration  
**Bill Jahn, Big Bear Lake**

Community, Economic &  
Human Development  
**Peggy Huang, Transportation  
Corridor Agencies**

Energy & Environment  
**Linda Parks, Ventura County**

Transportation  
**Cheryl Viegas-Walker, El Centro**

## REGULAR MEETING

# ENERGY AND ENVIRONMENT COMMITTEE

*Thursday, February 6, 2020  
10:00 a.m. – 12:00 p.m.*

**SCAG MAIN OFFICE  
900 Wilshire Blvd., Ste. 1700  
Policy A Meeting Room  
Los Angeles, CA 90017  
(213) 236-1800**

If members of the public wish to review the attachments or have any questions on any of the agenda items, please contact Tess Rey-Chaput at (213) 236-1908 or via email at [REY@scag.ca.gov](mailto:REY@scag.ca.gov). Agendas & Minutes are also available at: [www.scag.ca.gov/committees](http://www.scag.ca.gov/committees)

SCAG, in accordance with the Americans with Disabilities Act (ADA), will accommodate persons who require a modification of accommodation in order to participate in this meeting. SCAG is also committed to helping people with limited proficiency in the English language access the agency's essential public information and services. You can request such assistance by calling (213) 236-1908. We request at least 72 hours (three days) notice to provide reasonable accommodations and will make every effort to arrange for assistance as soon as possible.

This Page Intentionally Left Blank



## ENERGY AND ENVIRONMENT COMMITTEE AGENDA

---

### EEC - Energy and Environment Committee *Members – February 2020*

1. **Sup. Linda Parks**  
EEC Chair, Ventura County
2. **Hon. David Pollock**  
EEC Vice Chair, Moorpark, RC District 46
3. **Hon. Ana Beltran**  
Westmorland, ICTC
4. **Hon. Margaret Clark**  
Rosemead, RC District 32
5. **Hon. Robert Copeland**  
Signal Hill, GCCOG
6. **Hon. Maria Davila**  
South Gate, GCCOG
7. **Hon. Ned Davis**  
Westlake Village, LVMCOG
8. **Hon. Paula Devine**  
Glendale, AVCJPA
9. **Hon. Jordan Ehrenkranz**  
Canyon Lake, WRCOG
10. **Hon. Sandra Genis**  
Costa Mesa, OCCOG
11. **Hon. Shari Horne**  
Laguna Woods, OCCOG
12. **Hon. Elaine Litster**  
Simi Valley, VCOG
13. **Hon. Diana Mahmud**  
South Pasadena, SGVCOG
14. **Hon. Judy Mitchell**  
Rolling Hills Estates, RC District 40
15. **Hon. Toni Momberger**  
Redlands, SBCTA

---

#### OUR MISSION

*To foster innovative regional solutions that improve the lives of Southern Californians through inclusive collaboration, visionary planning, regional advocacy, information sharing, and promoting best practices.*

#### OUR VISION

*Southern California's Catalyst for a Brighter Future*

#### OUR CORE VALUES

*Be Open | Lead by Example | Make an Impact | Be Courageous*



## ENERGY AND ENVIRONMENT COMMITTEE AGENDA

---

- 16. Hon. Cynthia Moran**  
Chino Hills, SBCTA
- 17. Hon. Greg Morena**  
Santa Monica, WSCCOG
- 18. Hon. Oscar Ortiz**  
Indio, CVAG
- 19. Hon. Jim Osborne**  
Lawndale, SBCCOG
- 20. Hon. Jeannine Pearce**  
Long Beach, RC District 30
- 21. Sup. Luis Plancarte**  
Imperial County
- 22. Hon. Miguel Pulido**  
OCTA Representative
- 23. Hon. Carmen Ramirez**  
Oxnard, RC District 45
- 24. Hon. Greg Raths**  
Mission Viejo, OCCOG
- 25. Hon. Richard Rollins**  
Port Hueneme, VCOG
- 26. Hon. Deborah Robertson**  
Rialto, RC District 8
- 27. Hon. Meghan Sahli-Wells**  
Culver City, RC District 41
- 28. Hon. Rhonda Shader**  
Placentia, Pres. Appt.(Member at Large)
- 29. Hon. Emma Sharif**  
Compton, RC District 26
- 30. Hon. Sharon Springer**  
Burbank, SFVCOG
- 31. Hon. John Valdivia**  
San Bernardino, SBCTA

---

### OUR MISSION

*To foster innovative regional solutions that improve the lives of Southern Californians through inclusive collaboration, visionary planning, regional advocacy, information sharing, and promoting best practices.*

### OUR VISION

*Southern California's Catalyst for a Brighter Future*

### OUR CORE VALUES

*Be Open | Lead by Example | Make an Impact | Be Courageous*



**32. Hon. Edward Wilson**  
Signal Hill, GCCOG

**33. Hon. Bonnie Wright**  
Hemet, WRCOG

---

**OUR MISSION**

*To foster innovative regional solutions that improve the lives of Southern Californians through inclusive collaboration, visionary planning, regional advocacy, information sharing, and promoting best practices.*

**OUR VISION**

*Southern California's Catalyst for a Brighter Future*

**OUR CORE VALUES**

*Be Open | Lead by Example | Make an Impact | Be Courageous*

This Page Intentionally Left Blank



# ENERGY AND ENVIRONMENT COMMITTEE AGENDA

Southern California Association of Governments  
900 Wilshire Boulevard, Suite 1700 – Policy A Meeting Room  
Los Angeles, California 90017  
**Thursday, February 6, 2020**  
**10:00 AM**

The Energy and Environment Committee may consider and act upon any of the items on the agenda regardless of whether they are listed as Information or Action items.

## CALL TO ORDER AND PLEDGE OF ALLEGIANCE *(The Honorable Linda Parks, Chair)*

### PUBLIC COMMENT PERIOD

Members of the public desiring to speak on items on the agenda, or items not on the agenda, but within the purview of the Committee, must fill out and present a Public Comment Card to the Assistant prior to speaking. Comments will be limited to three (3) minutes per speaker. The Chair has the discretion to reduce the time limit based upon the number of speakers and may limit the total time for all public comments to twenty (20) minutes.

### REVIEW AND PRIORITIZE AGENDA ITEMS

#### CONSENT CALENDAR

##### Approval Items

- 1. Minutes of the Meeting - November 7, 2019 Page 7

##### Receive and File

- 2. Go Human Outlook - Safety Strategies and Resources Page 12
- 3. Advancement of the Growth Vision for Connect SoCal Page 19
- 4. Resolution No. 20-618-1 Regarding Regional Funding for Housing Page 38

#### INFORMATION ITEMS

- 5. Public Safety Power Shutoff 40 mins. Page 53  
*(Garrett Wong, LGSEC Board Chair and Climate Program Manager,  
# Santa Barbara)*
- 6. Update on AB 617 Community Plans in the South Coast AQMD 20 mins. Page 62  
*(Dr. Jo Kay Ghosh, South Coast AQMD)*
- 7. SCAG Regional Greenprint 15 mins. Page 76  
*(India Brookover )*

---

#### OUR MISSION

To foster innovative regional solutions that improve the lives of Southern Californians through inclusive collaboration, visionary planning, regional advocacy, information sharing, and promoting best practices.

#### OUR VISION

Southern California's Catalyst for a Brighter Future

#### OUR CORE VALUES

Be Open | Lead by Example | Make an Impact | Be Courageous



8. Clean Power Pathway Plan  
*(Joshua Torres, Southern California Edison)*

10 mins.

Page 83

**CHAIR'S REPORT**

*(The Honorable Linda Parks, Chair)*

**STAFF REPORT**

*(Grieg Asher, SCAG Staff)*

**FUTURE AGENDA ITEMS**

**ANNOUNCEMENTS**

**ADJOURNMENT**

---

**OUR MISSION**

*To foster innovative regional solutions that improve the lives of Southern Californians through inclusive collaboration, visionary planning, regional advocacy, information sharing, and promoting best practices.*

**OUR VISION**

*Southern California's Catalyst for a Brighter Future*

**OUR CORE VALUES**

*Be Open | Lead by Example | Make an Impact | Be Courageous*





Southern California Association of Governments
900 Wilshire Boulevard, Suite 1700, Los Angeles, California 90017
February 6, 2020

ENERGY AND ENVIRONMENT COMMITTEE
MINUTES OF THE MEETING
THURSDAY, NOVEMBER 7, 2019

THE FOLLOWING MINUTES ARE A SUMMARY OF ACTIONS TAKEN BY THE ENERGY AND ENVIRONMENT COMMITTEE (EEC). A DIGITAL RECORDING OF THE ACTUAL MEETING IS AVAILABLE AT: <http://scag.igm2.com/Citizens/>

The Energy and Environment Committee (EEC) met at SCAG, 900 Wilshire Blvd., Suite 1700, Los Angeles, CA 90017. A quorum was present.

Members Present

Table with 2 columns: Member Name and District/County. Includes members like Hon. David Pollock (District 46), Hon. Margaret Clark (District 32), etc.

Members Not Present

Sup. Linda Parks (Chair) ..... Ventura County

OUR MISSION

To foster innovative regional solutions that improve the lives of Southern Californians through inclusive collaboration, visionary planning, regional advocacy, information sharing, and promoting best practices.

OUR VISION

Southern California's Catalyst for a Brighter Future

OUR CORE VALUES

Be Open | Lead by Example | Make an Impact | Be Courageous

---

Hon. Ana Beltran, Westmoreland	ICTC
Hon. Maria Davila, South Gate	GCCOG
Hon. Cynthia Moran, Chino Hills	SBCTA
Hon. Judy Nelson, Glendora	SGVCOG
Hon. James Osborne, Lawndale	SBCCOG
Hon. Carmen Ramirez, Oxnard	District 45
Hon. Greg Raths, Mission Viejo	OCCOG
Hon. Bonnie Wright, Hemet	WRCOG
Hon. John Valdivia, San Bernardino	SBCCOG

### **CALL TO ORDER AND PLEDGE OF ALLEGIANCE**

In the absence of Chair Linda Parks, Vice Chair David Pollock called the meeting to order at 11:31 a.m. and led the Pledge of Allegiance.

### **PUBLIC COMMENT PERIOD**

Seeing there were no public comment speakers, Vice Chair Pollock closed the Public Comment period.

### **REVIEW AND PRIORITIZE AGENDA ITEMS**

Vice Chair Pollock acknowledged there was no request to prioritize agenda items.

### **CONSENT CALENDAR**

#### Approval Item

1. Minutes of the Meeting - October 3, 2019

A MOTION was made (Plancarte) to approve the Consent Calendar noting a correction on the Minutes that Councilmember Toni Momberger was present at the meeting. Motion was SECONDED (Robertson) and passed by the following votes:

**AYE/S:** Clark, Copeland, Davis, Devine, Genis, Mitchell, Momberger, Morena, Ortiz, Plancarte, Pollock, Ramirez, Robertson, Sahli-Wells, Shader, Springer and Wilson (17)

**NOE/S:** None (0)

**ABSTAIN/S:** Horne and Pearce (2)

**ACTION/DISCUSSION ITEM**

2. Recommendation and Authorization to Release the Connect SoCal Draft PEIR

A MOTION was made (Wilson) recommending that the Regional Council (RC) authorize the Executive Director to release the Connect SoCal Draft Program Environmental Impact Report (PEIR) within thirty (30) days after the release of the Connect SoCal Plan for public comments. Motion was SECONDED (Robertson) and passed by the following votes:

**AYE/S:** Copeland, Davis, Devine, Gardner, Genis, Horne, Mitchell, Momberger, Morena, Ortiz, Plancarte, Pollock, Ramirez, Robertson, Sahli-Wells, Shader, Sharif, Springer and Wilson (20).

**NOE/S:** None (0)

**ABSTAIN/S:** Clark (1)

**CHAIR'S REPORT**

A report was not provided.

**STAFF REPORT**

A report was not provided.

**FUTURE AGENDA ITEM/S**

Regional Councilmember Deborah Robertson, Rialto, District 8, requested a future agenda item be added regarding “water in the region” and that an invitation be extended to Gloria Gray, Chairwoman of the Metropolitan Water District.

**ANNOUNCEMENT/S**

Councilmember Mike Gardner, Riverside, announced that he is not running for re-election and therefore, today is his last EEC meeting. On behalf of the EEC members, Vice Chair Pollock expressed appreciation for Councilmember Gardner’s many contributions to the committee. Councilmember Gardner will be formally recognized at the upcoming Regional Conference and



---

General Assembly scheduled for May 7, 2020.

**ADJOURNMENT**

There being no further business, Vice Chair Pollock adjourned the Energy and Environment Committee meeting at 11:42 a.m.

The next regular meeting is scheduled for Thursday, February 6, 2020 at the SCAG Los Angeles, Office.

[MINUTES ARE UNOFFICIAL UNTIL APPROVED BY THE EEC]

//

**ENERGY AND ENVIRONMENT COMMITTEE ATTENDANCE REPORT**

**2019-20**

MEMBERS	Date Appointed if after 5/1/19	Representing	May	Jun	Jul	Aug	Sep	Oct	Nov	Dec	Jan	Feb	Mar	Apr	Total Mtgs Attended To Date
Beltran, Ana		Westmoreland, ICTC		0		0	1	0	0						1
Clark, Margaret		Rosemead, RC District 32		1		1	1	1	1						5
Copeland, Robert	Jun-19	Signal Hill, GCCOG		1		0	1	0	1						3
Davila, Maria		South Gate, GCCOG		0		0	0	0	0						0
Davis, Ned		Westlake Village, LVMCOG		1		1	0	1	1						4
Devine, Paula		Glendale, AVCJPA		1		0	1	0	1						3
Ehrenkranz, Jordan		Canyon Lake, WRCOG		1		0	1	0	1						3
Gardner, Mike		Riverside, WRCOG		1		1	1	0	1						4
Genis, Sandra		Costa Mesa, OCCOG		1		1	1	1	1						5
Horne, Shari		Laguna Woods, OCCOG		1		1	1	0	1						4
Mahmud, Diana		So. Pasadena, SGVCOG		1		0	1	1	1						4
Mitchell, Judy		Rolling Hills Estates, RC District 40		0		0	1	1	1						3
Momberger, Toni	Aug-19	Redlands, SBCTA				1	0	1	1						3
Moran, Cynthia		Chino Hills, SBCTA	D	0	D	0	0	0	0	D	D				0
Morena, Greg	May-19	Santa Monica, WCCOG	A	0	A	1	0	0	1	A	A				2
Ortiz, Oscar		Indio, CVAG	R	1	R	1	1	1	1	R	R				5
Osborne, Jim		Lawndale, SBCCOG	K	1	K	0	1	1	0	K	K				3
Parks, Linda (CHAIR)		Ventura County		1		0	1	1	0						3
Plancarte, Luis		Imperial County		0		1	1	1	1						4
Pearce, Jeannine		Long Beach, District 30				0	0	0	1						1
Pollock, David (Vice Chair)		Moorpark, VCOG		1		1	1	1	1						5
Ramirez, Carmen		Oxnard, RC District 45		1		1	1	1	1						5
Raths, Greg		Mission Viejo, OCCOG		0		0	0	1	0						1
Robertson, Deborah		Rialto, RC District 8		0		1	1	0	1						3
Sahli-Wells, Meghan		Culver City, RC District 41		0		1	1	1	1						4
Shader, Rhonda	Jun-19	Placentia, President's Appointment		0		0	0	1	1						2
Sharif, Emma		Compton, RC District 26		1		1	1	1	1						5
Springer, Sharon		Burbank, SFVCOG		1		1	1	1	1						5
Valdivia, John		San Bernardino, SBCCOG		0		1	0	0	0						1
Wilson, Edward H.J.		Signal Hill, GCCOG		1		0	0	1	1						3
Wright, Bonnie		Hemet, WRCOG		0		0	0	0	0						

Attachment: EEC Attendance Sheet 2019-20 (Minutes of the Meeting - November 7, 2019)

This Page Intentionally Left Blank



Southern California Association of Governments  
900 Wilshire Boulevard, Suite 1700, Los Angeles, California 90017  
February 6, 2020

**To:** Community  
Economic & Human Development Committee (CEHD)  
Energy & Environment Committee (EEC)  
Transportation Committee (TC)  
**From:** Dorothy Suchkova, Senior Regional Planner, Active  
Transportation & Special Programs, (213) 236 - 1932,  
suchkova@scag.ca.gov  
**Subject:** Go Human Outlook - Safety Strategies and Resources

EXECUTIVE DIRECTOR'S  
APPROVAL

**RECOMMENDED ACTION FOR TC:**

For Information Only - No Action Required

**RECOMMENDED ACTION FOR CEHD AND EEC:**

Receive and File

**STRATEGIC PLAN:**

This item supports the following Strategic Plan Goal 1: Produce innovative solutions that improve the quality of life for Southern Californians. 4: Provide innovative information and value-added services to enhance member agencies' planning and operations and promote regional collaboration.

**EXECUTIVE SUMMARY:**

***SCAG, in coordination with its local and regional partners, will renew the Go Human active transportation and encouragement program. Staff will present an update on the status of the active transportation safety and encouragement campaign and highlight opportunities for participation.***

**BACKGROUND:**

The SCAG region, like California and the nation as a whole, experienced a period of annual declines in traffic-related fatalities and serious injuries until 2012 when they began to steadily rise. Although the region has made some progress on safety, 1,500 people are killed, 5,200 are seriously injured and 136,000 are injured in traffic collisions on average each year. About 73 percent of those killed since 2001 were in vehicles or on motorcycles, while the remaining 27 percent were walking or bicycling (disproportionate to their mode share, 12 percent of all daily trips are walking or biking trips). The numbers of both pedestrians and bicyclists killed are the highest they have been for more than a decade. These collisions are happening in every city across the region.

**OUR MISSION**

*To foster innovative regional solutions that improve the lives of Southern Californians through inclusive collaboration, visionary planning, regional advocacy, information sharing, and promoting best practices.*

**OUR VISION**

*Southern California's Catalyst for a Brighter Future*

**OUR CORE VALUES**

*Be Open | Lead by Example | Make an Impact | Be Courageous*

---

To address the number of collisions occurring, the SCAG 2014 General Assembly passed a resolution to support a regional safety initiative aimed at improving roadway safety for bicyclists and pedestrians. To implement the resolution, SCAG secured \$2.3 million in Caltrans grant funding from the statewide 2014 Active Transportation Program call for projects to coordinate a Southern California Active Transportation Safety and Encouragement Campaign.

To continue the Go Human Campaign's momentum, SCAG applied for and was awarded an additional \$1,000,000 in funding from the Office of Traffic Safety to extend the campaign into 2020. This funding will be used to conduct a fourth round of safety advertising, with advertisements running in 2020, aiming to reach 285 million impressions. In addition, the funds will be used to support Open Streets technical assistance through webinars, localized safety community engagement through a mini-grant program, the expansion of SCAG's demonstration resources through its Kit of Parts deployment program in partnership with cities across the region, as well as the continuation of SCAG's Go Human Safety Pledge, which, by committing to a safety strategy, makes partners eligible for safety resources such as borrowing the Kit of Parts, co-branded materials, and more.

More information on the advertising campaign, as well as, other components of Go Human can be found at [www.gohumansocal.org](http://www.gohumansocal.org).

**FISCAL IMPACT:**

None

**ATTACHMENT(S):**

1. PowerPoint Presentation - Go Human Outlook 2020



# Go Human 2020 Outlook

February 6, 2020

Dorothy Le Suchkova

Active Transportation and Special Programs

February 6, 2020

[www.scag.ca.gov](http://www.scag.ca.gov)



## Go Human 2020 Outlook Summary

- **Kit of Parts:** Resources available now, additional Kits complete by August 2020
- **Go Human Challenge Items:** Available now
- **Open Streets Technical Assistance:** March – August 2020
- **Local Community Engagement Mini Call for Projects and Implementation:** April – August 2020
- **Co-Branding:** Available April – August 2020
- **Advertising:** Summer 2020 flight



## Go Human Safety Pledge

SCAG

### Commit to Safety



- By signing the *Go Human Safety Pledge* and committing to a safety strategy, partners become eligible for safety resources such as borrowing the Kit of Parts, co-branded materials, and more
- Cities that are currently working on safety efforts and who sign the pledge to be publicly recognized for their efforts
- Safety Pledge can be found here: <https://scag.wufoo.com/forms/scag-safety-pledge/>

## Safety Pledge Commitment Activities

Examples of activities that cities can pledge to commit to:

- Host a temporary safety demonstration project
- Vision Zero Resolution
- Safe Routes to School Plan
- Conduct bike and walk audits
- More info on sample menu of activities:

<http://gohumansocal.org/Documents/Workshop-Materials/Safety-Pledge-Menu.pdf>



## Kit of Parts - Available Now

- Creation of 2 more kits
- More robust lending library across the SCAG region – ultimate goal is 1 kit per county.
- Current Kits (2) – Available now
  - 1) Parklet
  - 2) Curb Extension
  - 3) Separated Bike Lane
  - 4) Artistic Crosswalk
  - 5) Median Refuge Island



Example of artistic crosswalk



Example of curb extension



Example of separated bike lane



Example of parklet

## Go Human Challenge – Available Now

Educational pop-up games designed to be used in conjunction with an existing event to enhance community engagement



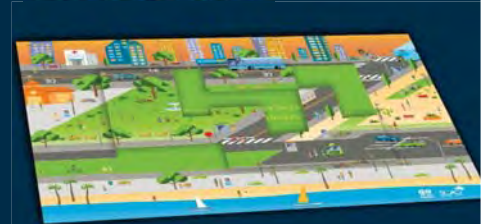
**TRANSPORTATION SAFETY**

Rolling Dice

**CLIMATE RESILIENCY**  
Tic-Tac-Toe



**ENVIRONMENTAL RESPONSIBILITY**  
Oversized Puzzle



## Open Streets Technical Assistance



- March – August 2020
- Technical assistance to incorporate safety component into open streets events
- Technical assistance to include webinars and on-site tours at CicLAvia with partners



## Local Community Engagement Partnerships



- April – August 2020
- Mini call for projects targeted for community engagement
- Fund community engagement projects to advance safety in local communities
- Examples include public art, wayfinding, or demonstration projects

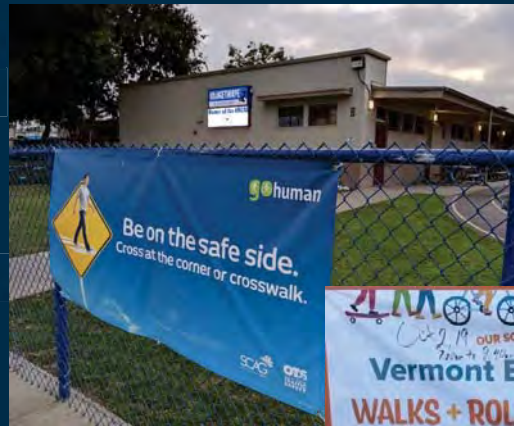


Attachment: PowerPoint Presentation - Go Human Outlook 2020 [Revision 1] (Go Human Outlook - Safety Strategies and Resources)

## Advertising Campaign, Co-branding and Printing



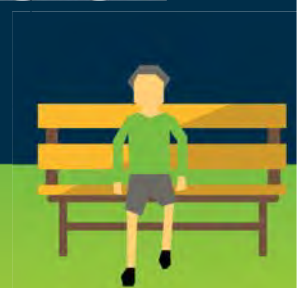
- Refreshed social media/digital advertising targeting the High Injury Network (HIN) (Summer 2020)
- Opportunities for co-branding and materials printing for partners who take the Safety Pledge (April 2020 start)
- **Police Departments and Schools:** Connect us to your police department and and SCAG will develop materials for distribution.



Thank you for being champions for safety in your city and region!

More information on the advertising campaign, as well as, other components of Go Human can be found at [www.gohumansocal.org](http://www.gohumansocal.org)

Dorothy Le Suchkova, Senior Regional Planner, [suchkova@scag.ca.gov](mailto:suchkova@scag.ca.gov)



Materials developed with funding provided by the California Office of Traffic Safety.

This Page Intentionally Left Blank



Southern California Association of Governments  
900 Wilshire Boulevard, Suite 1700, Los Angeles, California 90017  
February 6, 2020

**To:** Community  
Economic & Human Development Committee (CEHD)  
Energy & Environment Committee (EEC)  
Transportation Committee (TC)  
Regional Council (RC)  
**From:** Kimberly Clark, Regional Planner Specialist, Research &  
Analysis, (213) 236-1844, Clark@scag.ca.gov  
**Subject:** Advancement of the Growth Vision for Connect SoCal

EXECUTIVE DIRECTOR'S  
APPROVAL

**RECOMMENDED ACTION FOR CEHD:**

For Information Only - No Action Required

**RECOMMENDED ACTION FOR RC, EEC AND TC:**

Receive and File

**STRATEGIC PLAN:**

This item supports the following Strategic Plan Goal 1: Produce innovative solutions that improve the quality of life for Southern Californians.

**EXECUTIVE SUMMARY:**

*As required by state planning law, the Draft Connect SoCal plan's Growth Vision identifies areas sufficient to house the region's population, including all economic segments of the population, through 2045 – taking into account net migration to the region, population growth, household formation, and employment growth. It also identifies areas sufficient to house an eight-year projection of housing need for the region as required.*

*In crafting the Growth Vision, SCAG engaged with stakeholders over the last three years of the four year planning cycle. One important element for this effort was the development of the Draft Connect SoCal plan's Growth Forecast Principles, which were advanced in partnership with stakeholders from SCAG's Technical Working Group (TWG) and serve to guide the development and future growth of the plan's forecast of population, households, and employment. Just prior to the release of the Draft Connect SoCal plan, SCAG engaged with local jurisdictions to seek feedback on the Growth Vision to promote consistency with the Growth Forecast Principles. The feedback received will be used to make technical adjustments to the Draft growth plan and develop the final Connect SoCal Growth Vision. To foster transparency in the process, this report summarizes the feedback received and technical adjustments being pursued to ensure consistency*

**OUR MISSION**

*To foster innovative regional solutions that improve the lives of Southern Californians through inclusive collaboration, visionary planning, regional advocacy, information sharing, and promoting best practices.*

**OUR VISION**

*Southern California's Catalyst for a Brighter Future*

**OUR CORE VALUES**

*Be Open | Lead by Example | Make an Impact | Be Courageous*

---

*with the Growth Forecast Principles.*

**BACKGROUND:**

The formulation of the Draft Connect SoCal plan's Growth Vision has been informed by several engagements with regional stakeholders, including the involvement of thousands of Southern Californians through one-on-one briefings/data review sessions with local jurisdictions, regional planning working groups, outreach to traditionally underrepresented groups through community-based organizations, and numerous public workshops.

In responding to stakeholders' diverse priorities, the Draft Connect SoCal plan's Growth Vision reflects the jurisdictional-level input on future development received from Southern California's towns, cities, and counties. To help achieve essential regional outcomes, including federal air quality conformity and per-capita greenhouse gas reductions, the Growth Vision focuses new development within a given jurisdiction in areas showing the highest impact for decreasing per-capita vehicle miles traveled (VMT) and for improving the safety and viability of multiple modes of transportation.

Further, the Draft Connect SoCal plan's Growth Vision aims to reduce future development in areas that are particularly sensitive for new expansion – such as areas vulnerable to adverse natural events like wildfires and sea level rise, as well as areas rich with resources like open space and farmlands. Although jurisdictions will not be obligated to modify land use policies, general plans, or regulations to be consistent with Connect SoCal strategies, SCAG anticipates providing resources in the coming years to encourage improved local alignment with a collective regional vision. More information on the Draft Connect SoCal plan's Growth Vision is available as Attachment 1 (“Draft Connect SoCal Growth Vision Methodology”).

To align the regional housing policy with Connect SoCal's environmental and sustainable development goals, elements of the Connect SoCal's Growth Vision - including overall jurisdictional growth as well as data and modeling outcomes related to transit and job accessibility factors - are used in the Draft Regional Housing Needs Assessment (RHNA) Methodology. More information on RHNA and the proposed allocation factors can be found at <http://www.scag.ca.gov/programs/Pages/Housing.aspx>.

Since the Growth Vision will be used to conduct required regional modeling analyses and inform local planning – including housing goals, the local review of the Draft Connect SoCal plan's Growth Vision is critical. Prior to the November 2019 release of the Draft Connect SoCal plan, SCAG sought feedback from local jurisdictions on our collective regional vision of distributing population, household and employment growth through 2045. Jurisdictions were provided six weeks to review the Draft Connect SoCal plan's Growth Vision and were required to substantiate any requests for revisions.



This review, which culminates three years of iterative research and communication on local policies and plans, was requested to ensure that (1) entitled projects are properly incorporated in the final Connect SoCal's Growth Vision, and that (2) projected development in the Growth Vision does not exceed the maximum densities of current local general or specific plans. In providing instructions to local jurisdictions for this effort, SCAG made it clear that revisions would be given consideration if they were related to these criteria (entitlements or maximum planned densities), and that requests for revisions to overall jurisdictional growth would not be accepted. After this opportunity for review, 55 jurisdictions provided feedback to SCAG (28 percent of the region's towns, cities, and counties).

Overall, this effort has been guided by the Draft Connect SoCal plan's Growth Forecast Principles, which were developed in collaboration with SCAG's Technical Working Group (TWG) whose membership includes staff from local jurisdictions, county transportation commissions, subregional organizations, community-based organizations, and universities:

- **Principle #1** - Connect SoCal will be adopted at the jurisdictional level, and directly reflects the population, household and employment growth projections that have been reviewed and refined with feedback from local jurisdictions through SCAG's Bottom-Up Local Input and Envisioning Process. The growth forecast maintains these locally-informed projected jurisdictional growth totals, meaning future growth is not reallocated from one local jurisdiction to another;
- **Principle #2** - Connect SoCal's growth forecast at the Transportation Analysis Zone (TAZ) level is controlled to not exceed the maximum density of local general plans, except in the case of existing entitlements and development agreements;
- **Principle #3** - For the purpose of determining consistency with Connect SoCal for California Environmental Quality Act (CEQA), grants or other opportunities, lead agencies such as local jurisdictions have the sole discretion in determining a local project's consistency; SCAG may also evaluate consistency for grants and other resource opportunities; consistency should be evaluated utilizing the goals and policies of Connect SoCal and its associated Program Environmental Impact Report (PEIR);
- **Principle #4** - TAZ level data or any data at a geography smaller than the jurisdictional level has been utilized to conduct required modeling analyses and is therefore advisory only and non-binding, given that sub-jurisdictional forecasts are not adopted as part of Connect SoCal. TAZ level data may be used by jurisdictions in local planning as they deem appropriate. There is no obligation by a jurisdiction to change its land use policies, General Plan, or regulations to be consistent with Connect SoCal; and

- 
- **Principle #5** - SCAG will maintain communication with agencies that use SCAG's sub-jurisdictional level data to ensure that the "advisory and non-binding" nature of the data is appropriately maintained.

Moving forward, SCAG will continue to utilize local feedback to finalize the regional Growth Vision for the final release of Connect SoCal, which is anticipated for adoption by SCAG's Regional Council in April 2020. In taking into account this feedback, SCAG will be evaluating if comments provided are (1) related to entitlements and/or local plans, and (2) are substantiated by each respective local jurisdiction. To finalize the Connect SoCal Growth Vision, technical adjustments such as these are anticipated to increase future growth in Connect SoCal's Priority Growth Areas (PGAs) – including High Quality Transit Areas (HQTAs) - and reduce development in constrained areas (e.g. protected open space). With this round of local review, SCAG is furthering Connect SoCal's greenhouse gas reduction goals and anticipated policy outcomes.

**FISCAL IMPACT:**

Work associated with this item is included in the FY 2019-20 Overall Work Program (OWP) budget under project number 290.4841.02, RTP/SCS Land Use Policy & Program Development and 290.4826.01, SCS Scenario Development & Outreach.

**ATTACHMENT(S):**

1. Draft Connect SoCal Growth Vision Methodology
2. PowerPoint Presentation - Draft Connect SoCal Plan's Growth Vision

## ***Attachment 1 – Draft Connect SoCal Plan’s Growth Vision Methodology***

### **Section 1 - Use of Connect SoCal’s Growth Vision for Local Planning**

The Growth Vision for Connect SoCal will identify areas sufficient to house the region’s population, including all economic segments of the population, through 2045 – taking into account net migration to the region, population growth, household formation, and employment growth. It will also identify areas sufficient to house an eight-year projection of housing need for the region.

In developing this vision, SCAG engaged with all 197 towns, cities, and counties in the region one-on-one to seek feedback on local growth between 2016 and 2045. SCAG also sought feedback on potential sustainable growth strategies from a broad range of stakeholder groups – including local jurisdictions, county transportation commissions, other partner agencies, industry groups, community-based organizations, and the general public. Connect SoCal utilizes a bottoms-up approach in that total projected growth for each jurisdiction will reflect feedback received from jurisdiction staff, including city managers, community development/planning directors, and local staff. Growth at the neighborhood level (i.e. transportation analysis zone (TAZ)) will reflect entitled projects and adhere to current general and specific plan maximum densities (except in cases where entitled projects and development agreements exceed these capacities as calculated by SCAG). Neighborhood level growth projections will also feature strategies and local best practices that help to reduce greenhouse gas emissions (GHG) from automobiles and light trucks to achieve Southern California’s GHG reduction target, approved by the California Air Resources Board (CARB) in accordance with Senate Bill 375.

Connect SoCal’s Growth Vision will be utilized for long range modeling purposes, and SCAG does not have a direct role in implementing the plan -- neither through decisions about what type of development is built where, nor what transportation projects are ultimately built. Achieving a sustained regional outcome depends upon informed and intentional local action. The proposed use of Connect SoCal’s Growth Vision in the Regional Housing Needs Assessment (RHNA) is described with detail in materials available at <http://www.scag.ca.gov/programs/Pages/Housing.aspx>.

### **Section 2 - Engagement Process for Envisioning Southern California’s Future**

At the direction of SCAG’s Regional Council, and under guidance from the Community, Economic, and Human Development (CEHD) Policy Committee, SCAG worked with local jurisdictions and a broad range of stakeholder groups during the four-year planning cycle for Connect SoCal to address regional challenges. These engagements, often referred to as [SCAG’s Bottom-Up Local Input and Envisioning Process](#), fell in four phases and aimed to solicit feedback on the region’s vision for 2045:

- ***Phase 1: Regular Technical Consultation with SCAG’s Technical Working Group (TWG)***  
To ensure transparency and technical veracity during all phases of this process, SCAG has had regular engagements with the TWG to seek guidance. Specific consultation has included an assessment of the survey elements and datasets that underwent review by local jurisdictions during Phase 2, and an overview of the scenario planning process, results of outreach, and technical elements for Phases 3 and 4.
- ***Phase 2: One-on-One Outreach and Local Input on Planned Growth***  
A key, formative step in the development of a growth vision for Connect SoCal was the generation of a forecast of regional and county level growth in collaboration with expert demographers and

economists on Southern California. From there, jurisdictional level forecasts were then ground-truthed by subregions and local agencies, which helped SCAG identify opportunities and barriers to future development. This forecast helps the region understand, in a very general sense, where we are expected to grow, and allows us to focus attention on areas that are experiencing change and may have increased transportation needs.

- **Phase 3: Regional Collaboration on Scenario Development**

SCAG engaged with a diverse group of stakeholders through regional planning working groups, where monthly meetings began in May 2018 and served as a forum to obtain feedback on potential Connect SoCal strategies to better integrate land use, housing, and transportation. Feedback informed how data gathered through one-on-one sessions with local jurisdictions from Phase 2 of the Bottom-Up Local Input and Envisioning Process could be utilized in developing Connect SoCal scenarios – principally how SCAG could envision a future that promoted regional outcomes for sustainability that also recognized the importance of local control. Moreover, outreach and events conducted in partnership with 18 community-based organizations across the region garnered feedback from stakeholders from traditionally underrepresented communities.

- **Phase 4: Engagement with the General Public on Potential Options for Connect SoCal**

SCAG sought feedback from the general public throughout the region through a public engagement initiative that featured 28 public workshops, an extensive advertisement campaign, a telephone town hall, and an online survey. Public workshop attendees reviewed four potential regional growth scenarios, each with a unique set of strategies that ranged from enhancing job centers, better connecting people to transportation options, protecting open space and farmland areas, and planning for our region’s future resiliency to natural disasters. Local plans and policies, as conveyed through Phase 2 of the Bottom-Up Local Input and Envisioning Process, were utilized in the development of several scenarios to ensure that options reflected an attainable future.

Overall, the Draft Connect SoCal plan reflects feedback from each stage of this extensive engagement process – starting with a vision for future growth that emphasizes local control and takes into consideration the growth constraints of local jurisdictions. This Growth Vision also includes strategies that could reduce the costs of housing development, increase viability of alternative transportation modes, reduce our region’s vulnerability from the impacts of climate change, protect open space and farmland, and promote overall sustainability for Southern California.

### **Section 3 - Sustainable Communities Strategy for Connect SoCal**

As the region faces unprecedented challenges looking towards 2045, it is important to coordinate regional land use and transportation strategies and address Southern California’s growth and sustainability challenges. The Draft Connect SoCal plan focuses growth through 2045 in priority areas that are well served by transit, neighborhoods that already feature very walkable infrastructure, and/or have significant concentrations of jobs. To protect our region’s natural assets and reduce future risks from climate change, new growth through 2045 will be reduced in constrained areas (e.g. very high severity fire risk areas, farmland, protected open space, wildlife corridors, areas at risk for near-term sea level rise, flood hazard areas, etc.).

Locating housing, jobs, and transit closer together can increase mobility options and reduce the need for residents to drive. Developing compact centers with a robust mix of land uses, a range of building types, and connected public spaces can strengthen the fabric of communities. While coordinating land-use and

transportation strategies can yield beneficial outcomes, it is quite difficult to implement in a region where authority is divided among multiple agencies. The Draft Connect SoCal plan ultimately aims to illuminate pathways to achieving regional goals and inspire rather than dictate local actions and policies.

The following strategies comprise the Draft Connect SoCal plan's regional Sustainable Communities Strategy or "SCS" and fall into five categories:

- ***Focus Growth Near Destinations and Mobility Options:***
  - Emphasize land use patterns that facilitate multimodal access to work, schools, and other destinations;
  - Focus on jobs-housing balance to reduce commute times and distances and expand job opportunities near transit and along center-focused main streets;
  - Plan for growth near transit investments and support implementation of first/last mile strategies;
  - Promote the redevelopment of underperforming retail developments and other outmoded nonresidential uses;
  - Prioritize infill and redevelopment of underutilized land to accommodate new growth, increase amenities and connectivity in existing neighborhoods;
  - Encourage design and transportation options that reduce the reliance on and number of solo car trips (this could include mixed uses or locating and orienting close to existing destinations); and
  - Identify ways to "right size" parking requirements and promote alternative parking strategies (e.g. shared parking, smart parking).
- ***Promote Diverse Housing Choices:***
  - Preserve and rehabilitate affordable housing and prevent displacement;
  - Identify opportunities for new workforce and affordable housing development;
  - Create incentives and reduce regulatory barriers for building context-sensitive accessory dwelling units to increase housing supply; and
  - Provide support to local jurisdictions to streamline and lessen barriers to housing development that supports reduction of GHG emissions.
- ***Leverage Technology Innovations:***
  - Promote low emission technologies, such as neighborhood electric vehicles, shared ride hailing, car sharing, bike sharing, and scooters by providing supportive and safe infrastructure, such as dedicated lanes, charging structures, and parking/drop-off space;
  - Improve access to services through technology, including telework and telemedicine, as well as commuter incentives such as a mobility wallet; and
  - Identify ways to incorporate "micro-power grids" in communities, for example solar energy, hydrogen fuel cell power storage and power generation.
- ***Support Implementation of Sustainability Policies:***
  - Pursue funding opportunities to support local sustainable development implementation projects that reduce GHG emissions;
  - Support statewide legislation that reduces barriers to new construction and incentivizes development near transit corridors and stations;

- Support jurisdictions in the establishment of Enhanced Infrastructure Financing Districts (EIFDs), Community Revitalization and Investment Authorities (CRIAS), or other tax increment or value capture tools to finance sustainable infrastructure and development projects;
  - Work with local jurisdictions/communities to identify opportunities and assess barriers to implement sustainability strategies;
  - Enhance partnerships with other planning organizations to promote resources and best practices in the SCAG region;
  - Continue to support long range planning efforts by local jurisdictions; and
  - Provide educational opportunities to local decision makers and staff on new tools, best practices and policies related to implementing the Sustainable Communities Strategy.
- **Promote a Green Region:**
    - Support development of local climate adaptation and hazard mitigation plans, as well as project implementation that improves community resiliency to climate change and natural hazards;
    - Support local policies for renewable energy production, reduction of urban heat islands, and carbon sequestration;
    - Integrate local food production into the regional landscape;
    - Promote more resource-efficient development focused on conservation, recycling, and reclamation;
    - Preserve, enhance, and restore regional wildlife connectivity;
    - Reduce consumption of resource areas, including agricultural land; and
    - Identify ways to improve access to public park space.

Overall, Connect SoCal’s vision for the region will incorporate a range of best practices for increasing transportation choices, reducing dependence on personal automobiles, further improving air quality and encouraging growth in walkable, mixed-use communities with ready access to transit infrastructure and employment.

#### **Section 4 - Land Use Tools to Support Growth**

Connect SoCal will reinforce attractive and functional places for Southern California residents to live, work, and play through a variety of land use tools to create dynamic, connected built environments that support multimodal mobility, reduced reliance on single-occupancy vehicles, and reduced GHG. A key land use tool is the identification of regional Priority Growth Areas (PGAs) where many Connect SoCal strategies can be most fully realized. PGAs feature:

- **Job Centers** - Areas with significantly higher employment density than surrounding areas. Over 60 subareas are identified as having peak job density and capture locally significant job centers throughout all six counties in the region;
- **Transit Priority Areas (TPAs)** - An area within one-half mile of a major transit stop that is existing or planned. This includes an existing rail transit station, a ferry terminal served by bus or rail transit service, or the intersection of two or more major bus routes with a frequency of service interval of 15 minutes or less during the morning and afternoon peak commute periods. (Based on CA Public Resources Code Section 21099 (a)(7) and CA Public Resources Code Section 21064.3);

- **High Quality Transit Areas (HQTAs)** - Areas within one-half mile of a major transit stop or a high-quality transit corridor (a corridor with fixed route bus service containing service intervals no longer than 15 minutes during peak commute hours - based on CA Public Resources Code Section 21155(b));
- **Neighborhood Mobility Areas (NMAs)** - Areas with high intersection density (generally 50 intersections per square mile or more), low to moderate traffic speeds, and robust residential retail connections that can support the use of Neighborhood Electric Vehicles or active transportation modes for short trips;
- **Livable Corridors** - This arterial network is a subset of the high quality transit areas based on level of transit service and land use planning efforts, with a few additional arterials identified through corridor planning studies funded through the Sustainability Planning Grant program (currently the Sustainable Communities Program); and
- **Spheres of Influence (outside of absolute and variable constrained areas)** - Existing or planned service areas and within the planning boundary outside of an agency's legal boundary; data for these areas was accessed by SCAG from each county's Local Agency Formation Commission (LAFCO) in 2016.

Collectively, the Draft Connect SoCal plan's PGAs will account for only six percent of region's total land area by 2045, but implementation of SCAG's recommended growth strategies will help these areas accommodate 68 percent of forecasted household growth and 79 percent of forecasted employment growth between 2016 and 2045. This more compact form of regional development, if fully realized, can reduce travel distances, increase mobility options, improve access to workplaces, and conserve the region's resource areas.

There are inherent constraints to expansive regional growth and the Draft Connect SoCal plan recognizes locations that are susceptible to natural hazards and a changing climate. Options will be emphasized that conserve important farmland, resource areas and habitat corridors, while growth on lands that are vulnerable to wildfire, flooding, and near-term sea-level rise will be decreased. The growth constraints outlined below were used to articulate where future growth is not encouraged. Absolute constraints reflect areas where growth will be reduced to achieve Connect SoCal's regional vision. Variable constraints reflect goals of Connect SoCal and will only be applied to growth when there is not capacity in non-constrained areas per a jurisdiction's general plan or specific plans.

#### Absolute Constrained Areas:

- **Tribal Nation Lands** – SCAG utilized the Census Bureau's American Indian/Alaska Native/Native Hawaiian (AIANNH) Areas database for 2017 to identify tribal nations in the SCAG region;
- **Military Lands** – Locations of military lands are derived from SCAG's 2016 Existing Land Use Database, which underwent review and refinement by local jurisdictions through the Bottom-Up Local Input and Envisioning Process;
- **Open Space and Conserved Lands** – Data on conservation areas, open space, and parks from year 2017 comes from the Save Our Agricultural Resources (SOAR) protected areas in Ventura County, the California Conservation Easement Database, as well as the California Protected Areas Database (CPAD). Together, these data inventories represent protected open space lands,

conserved areas, and conservation easements in the SCAG region and the greater State of California. Several elements were developed by aggregating and cross-checking various open space data from multiple public agencies by GreenInfo Network, and also benefit from feedback provided by local jurisdictions through SCAG's Bottom-Up Local Input and Envisioning Process;

- **Sea Level Rise Areas (2 feet)** – Data on coastal inundation were obtained from the National Oceanic and Atmospheric Administration (NOAA) Coastal Services Center's online mapping viewer depicting potential sea level rise and its associated impacts on the nation's coastal areas (accessed by SCAG in 2017). These data depict the potential inundation of coastal areas resulting from a projected 2 feet rise in sea level above current Mean Higher High Water (MHHW) conditions, and underwent review by SCAG's local jurisdictions; and
- **Farmlands in Unincorporated Areas** – Farmland information was obtained from the Farmland Mapping & Monitoring Program (FMMP) in the Division of Land Resource Protection in the California Department of Conservation. Established in 1982, the FMMP is to provide consistent and impartial data and analysis of agricultural land use and land use changes throughout the State of California. For SCAG's purposes, data from year 2016 (and 2014 in areas where 2016 data was unavailable) underwent review and refinement by local jurisdictions through the Bottom-Up Local Input and Envisioning Process.

#### Variable Constrained Areas:

- **Wildland-Urban Interface (WUI)** – Data on areas where housing and vegetation intermingle ("intermix WUI") and areas with housing in the vicinity of contiguous wildland vegetation ("interface WUI") were derived from the 2010 national Wildland-Urban Interface dataset developed by the SILVIS Lab at the University of Wisconsin-Madison;
- **Grazing Lands and Farmlands within Incorporated Jurisdictions** – Similar to farmlands identified in unincorporated areas, grazing lands and farmland information within incorporated areas were identified through the Farmland Mapping & Monitoring Program (FMMP) in the Division of Land Resource Protection in the California Department of Conservation, which underwent review by local jurisdictions;
- **500 Year Flood Plains** – Information on flood areas were derived from the Digital Flood Insurance Rate Map (DFIRM), obtained from Federal Emergency Management Agency (FEMA) in August 2017. The DFIRM Database is a digital version of the FEMA Flood Insurance Rate Maps (FIRM) that is designed for use with digital mapping and analysis software. The FIRM is created by FEMA for the purpose of floodplain management, mitigation, and insurance activities for the National Flood Insurance Program (NFIP), and was included for local jurisdiction review through SCAG's Bottom-Up Local Input and Envisioning Process;
- **CalFire Very High Severity Fire Risk (state and local)** – Information on areas with very high fire hazards was derived from CalFire's state responsibility area and local responsibility area Very High Fire Hazard Severity Zone (VHFHSZ) data, accessed by SCAG in early 2019; and
- **Natural Lands and Habitat Corridors** – Data on habitat corridors was derived from California Essential Habitat Connectivity Project, as developed by the California Department of Fish and Wildlife, which identifies large blocks of intact habitat or natural landscapes with connectivity



corridors essential for local wildlife. This dataset benefits from feedback from a selection of federal, state, local, tribal, and non-governmental organizations throughout California, and was made publicly available in 2010.

### **Section 5 – Growth Forecast Principles:**

The Draft Connect SoCal plan’s Growth Forecast Principles help to guide development of the Draft Connect SoCal Growth Vision, and were developed in partnership with SCAG’s Technical Working Group. To ensure that entitlements are fully captured and future development does not exceed current general plan and specific plan growth capacities, SCAG solicited feedback from local jurisdictions on the Draft Connect SoCal plan’s Growth Vision prior to the plan’s release. Moving forward, SCAG will be evaluating and incorporating feedback to finalize the Connect SoCal Growth Vision.

- **Principle #1** - Connect SoCal will be adopted at the jurisdictional level, and directly reflects the population, household and employment growth projections that have been reviewed and refined with feedback from local jurisdictions through SCAG’s Bottom-Up Local Input and Envisioning Process. The growth forecast maintains these locally-informed projected jurisdictional growth totals, meaning future growth is not reallocated from one local jurisdiction to another;
- **Principle #2** - Connect SoCal’s growth forecast at the Transportation Analysis Zone (TAZ) level is controlled to not exceed the maximum density of local general plans, except in the case of existing entitlements and development agreements;
- **Principle #3** - For the purpose of determining consistency with Connect SoCal for California Environmental Quality Act (CEQA), grants or other opportunities, lead agencies such as local jurisdictions have the sole discretion in determining a local project’s consistency; SCAG may also evaluate consistency for grants and other resource opportunities; consistency should be evaluated utilizing the goals and policies of Connect SoCal and its associated Program Environmental Impact Report (PEIR);
- **Principle #4** - TAZ level data or any data at a geography smaller than the jurisdictional level has been utilized to conduct required modeling analyses and is therefore advisory only and non-binding, given that sub-jurisdictional forecasts are not adopted as part of Connect SoCal. TAZ level data may be used by jurisdictions in local planning as they deem appropriate. There is no obligation by a jurisdiction to change its land use policies, General Plan, or regulations to be consistent with Connect SoCal; and
- **Principle #5** - SCAG will maintain communication with agencies that use SCAG’s sub-jurisdictional level data to ensure that the “advisory and non-binding” nature of the data is appropriately maintained.



# Local Review of the Draft Connect SoCal Plan's Growth Vision

Kimberly Clark, Program Manager – Resource Conservation and Resilient Communities  
Community, Economic, and Human Development Committee  
February 6, 2020

[www.scag.ca.gov](http://www.scag.ca.gov)



Attachment: PowerPoint Presentation - Draft Connect SoCal Plan's Growth Vision [Revision 1] (Advancement of the Growth Vision for Connect

## Connect SoCal Outreach



One-on-One Engagements with Local Jurisdictions

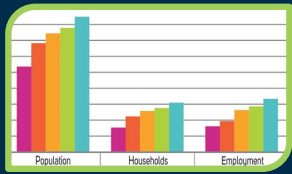


Scenario Envisioning: Regional Planning Working Groups  
Community Based Organizations



Public Workshops, Street Teams, Teletown Hall, Advertisement & Survey

# Data Elements for Local Review



Current and Future Population, Households, Employment



Existing and Planned Land Use, Local Transportation Infrastructure, Resource Areas, Potential Infill Parcels



Sustainability Best Practices, Transit Supportive Measures



Bottom-Up Local Input and Envisioning Process

SCAG is a regional planning organization that works with local governments to develop regional growth and transportation plans. This process is a key part of our regional planning efforts and is designed to help local governments better understand their role in the region and how they can contribute to the overall growth and development of the region.

Draft Data/Map Books

Imperial County

Los Angeles County

Orange County

Riverside County

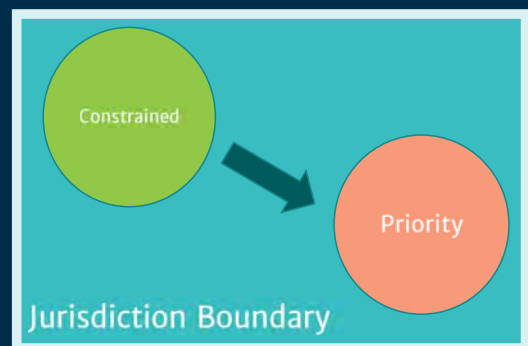
San Bernardino County

Ventura County

Buttons: Show My Data, Show My Comments, Show My Information

# Draft Connect SoCal Plan's Growth Vision Methodology

- Rely on jurisdictional growth forecast refined through the Bottom-Up Local Input and Envisioning Process
- Within a jurisdiction, target new population and jobs in Priority Growth Areas; deemphasize growth in Constrained Areas
- Do not exceed growth capacity prescribed by local plans and policies
- Capture entitled projects



## Draft Connect SoCal Plan's Growth Vision – Priority Growth Areas



Regional Job Centers



Transit Priority Areas



High Quality Transit Areas



Livable Corridors



Neighborhood Mobility Areas



Spheres of Influence

## Draft Connect SoCal Plan's Growth Vision – Constrained Areas



Military Lands and Tribal Nations



High Wildfire Threat Areas



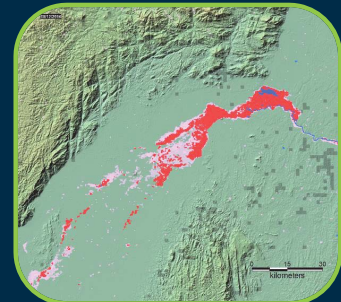
Natural and Farmlands



Areas Impacted by  
2 ft Sea Level Rise

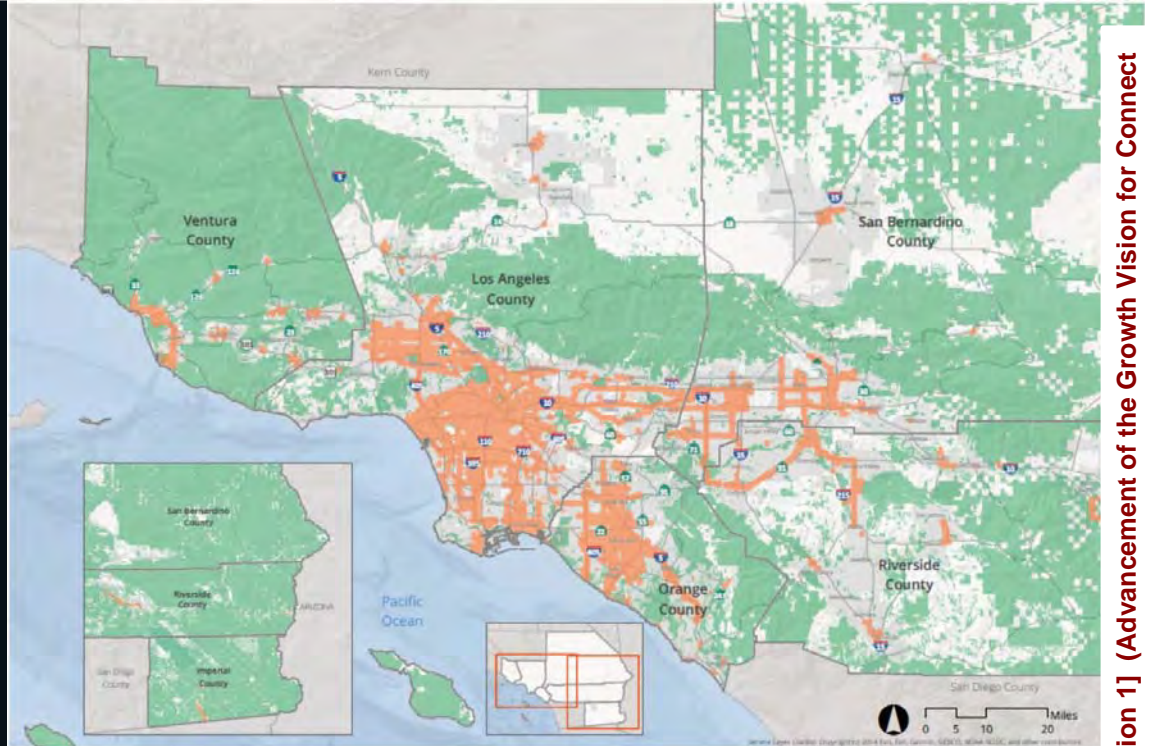


Wildlife Habitat



Flood Plains

# Draft Priority Growth Areas & Draft Constrained Areas



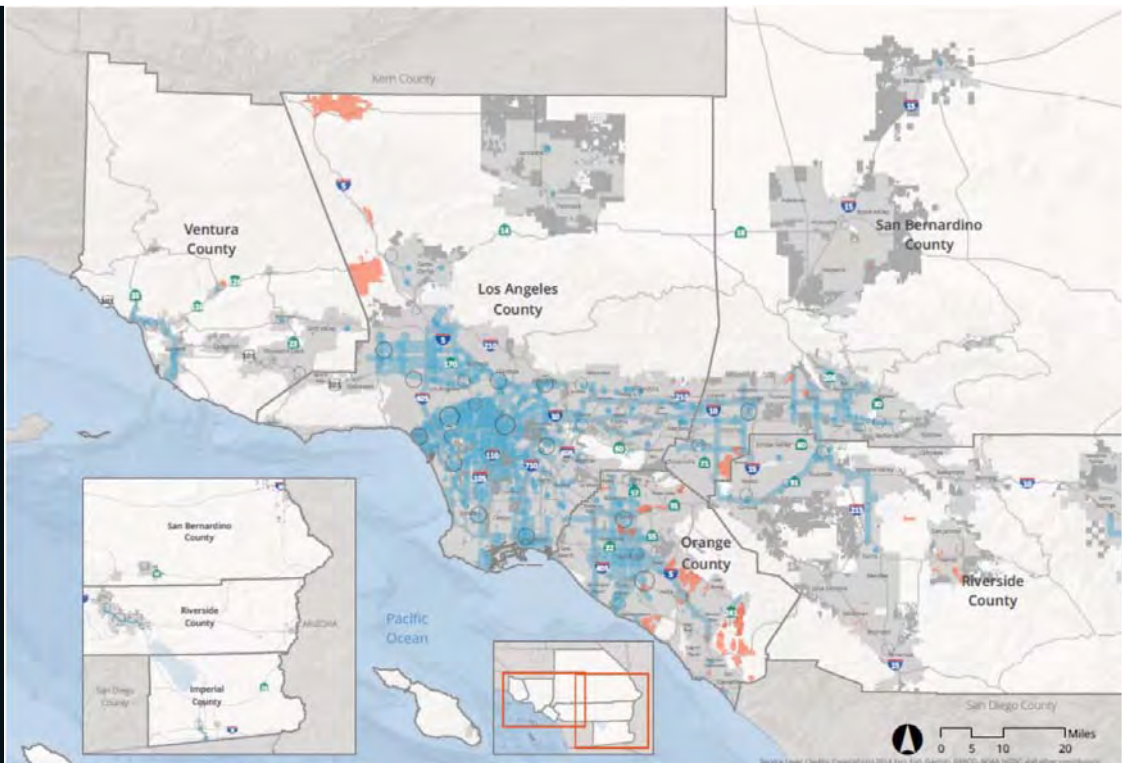
- Priority Growth Areas
- Constrained Areas

Note: SCAG utilized locally informed data elements to determine areas that ought to be precluded from growth (i.e. Absolute Growth Constraints - Tribal Lands, Military, Existing Open Space, Conserved Land, 2 ft Sea Level Rise, and Agriculture in Unincorporated Counties).

Source: CalBRACE, California Department of Conservation, CPAD, CCED, County Transportation Commissions, SCAG, 2019



# Draft Growth Vision



- Job Centers
- Priority Growth Areas
- Entitled Projects\*
- Incorporated Areas
- Sphere of Influence\*

\*Excludes absolute constrained areas

Source: County Transportation Commissions, LAFCO, Local Jurisdictions in SCAG region, SCAG, 2019

## Draft Connect SoCal Plan's Growth Forecast Principles



1. Connect SoCal will be adopted at the jurisdictional level, and directly reflects the population, household and employment growth projections that have been reviewed and refined with feedback from local jurisdictions through SCAG's Bottom-Up Local Input and Envisioning Process. The growth forecast maintains these locally informed projected jurisdictional growth totals, meaning future growth is not reallocated from one local jurisdiction to another.
2. Connect SoCal's growth forecast at the Transportation Analysis Zone (TAZ) level is controlled to not exceed the maximum density of local general plans, except in the case of existing entitlements and development agreements.
3. For the purpose of determining consistency with Connect SoCal for California Environmental Quality Act (CEQA), grants or other opportunities, lead agencies such as local jurisdictions have the sole discretion in determining a local project's consistency; SCAG may also evaluate consistency for grants and other resource opportunities; consistency should be evaluated utilizing the goals and policies of Connect SoCal and its associated Program Environmental Impact Report (PEIR).

## Draft Connect SoCal Plan's Growth Forecast Principles



4. TAZ level data or any data at a geography smaller than the jurisdictional level has been utilized to conduct required modeling analyses and is therefore advisory only and non-binding, given that sub-jurisdictional forecasts are not adopted as part of Connect SoCal. TAZ level data may be used by jurisdictions in local planning as they deem appropriate. There is no obligation by a jurisdiction to change its land use policies, General Plan, or regulations to be consistent with Connect SoCal.
5. SCAG will maintain communication with agencies that use SCAG's subjurisdictional level data to ensure that the "advisory and non-binding" nature of the data is appropriately maintained.

# Draft Connect SoCal Plan's Growth Vision Feedback Process



Population, Households, Employment



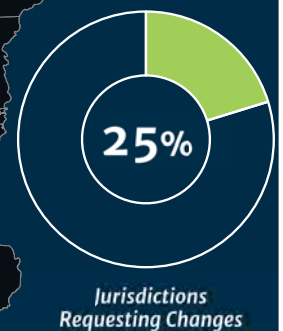
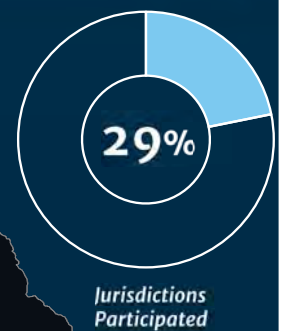
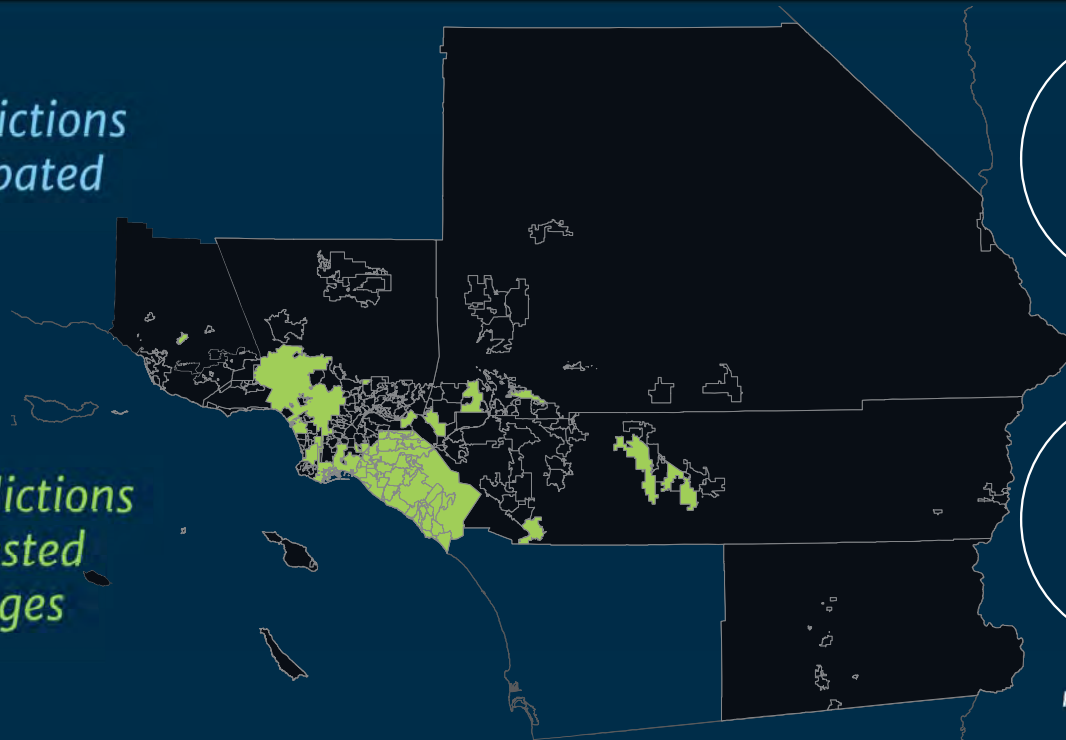
- Jurisdictions were given six weeks to review the Draft Connect SoCal plan's neighborhood level vision of growth for population, households, and employment from 2016 to 2045
- Requests for revisions to jurisdictional growth were not accepted
- Feedback was provided through SCAG's Scenario Planning Model Data Management Site
- Feedback on local growth would be accepted based on two criterion:
  - General Plan or Specific Plan Capacities
  - Entitled Projects or Existing Development Agreements

## Jurisdictions that Provided Feedback on the Draft Connect SoCal Plan's Growth Vision



55 Jurisdictions Participated

50 Jurisdictions Requested Changes



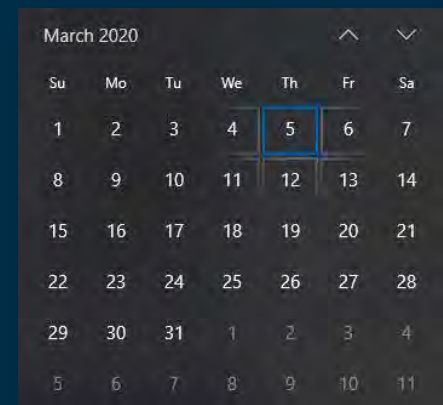
# Summary of Feedback on Draft Connect SoCal Plan's Growth Vision



County	Provided Feedback on Connect SoCal's Draft Growth Vision	Requested Changes to Connect SoCal's Draft Growth Vision (5 jurisdictions approved data)
Imperial	1	0
Los Angeles	9	7
Orange	35	35
Riverside	5	4
San Bernardino	3	3
Ventura	2	1
<b>Total:</b>	<b>55</b>	<b>50</b>

## Next Steps

- SCAG is reviewing feedback, collaborating with the Technical Working Group, and will give an update on the approach to finalize the Connect SoCal Growth Vision at the March meeting of the CEHD
- Emphasis will be put on working with the Draft Connect SoCal plan's Growth Vision and feedback from local jurisdictions to maximize the reduction in vehicle miles traveled (VMT) for the horizon years of Connect SoCal







Questions?

Thanks!

Kimberly Clark  
clark@scag.ca.gov  
(213) 236-1844  
[www.scag.ca.gov](http://www.scag.ca.gov)



This Page Intentionally Left Blank



Southern California Association of Governments  
900 Wilshire Boulevard, Suite 1700, Los Angeles, California 90017  
February 6, 2020

**To:** Community  
Economic & Human Development Committee (CEHD)  
Energy & Environment Committee (EEC)  
Transportation Committee (TC)  
Regional Council (RC)  
**From:** Kome Ajise, Executive Director, Executive Management, 213-236-1835, Ajise@scag.ca.gov  
**Subject:** Resolution No. 20-618-1 Regarding Regional Funding for Housing

EXECUTIVE DIRECTOR'S  
APPROVAL

**RECOMMENDED ACTION FOR EAC:**

Recommend that the Regional Council adopt Resolution No. 20-618-1 and authorize SCAG to apply for advance funding of twenty-five (25) percent, or \$11,867,755, of its maximum eligible funding allowed under the Regional Early Action Program (REAP).

**RECOMMENDED ACTION FOR CEHD:**

For Information Only – No Action Required

**RECOMMENDED ACTION FOR EEC AND TC:**

Receive and File

**RECOMMENDED ACTION FOR REGIONAL COUNCIL:**

Adopt Resolution No. 20-618-1 and authorize SCAG to apply for advance funding of twenty-five (25) percent, or \$11,867,755, of its maximum eligible funding allowed under the Regional Early Action Program (REAP).

**STRATEGIC PLAN:**

This item supports the following Strategic Plan Goal 2: Advance Southern California’s policy interests and planning priorities through regional, statewide, and national engagement and advocacy. 4: Provide innovative information and value-added services to enhance member agencies’ planning and operations and promote regional collaboration. 7: Secure funding to support agency priorities to effectively and efficiently deliver work products.

**EXECUTIVE SUMMARY:**

***The California 2019-20 Budget Act, also known as Assembly Bill (AB) 101, appropriated two new one-time programs to provide regions and jurisdictions with grants for planning activities to enable jurisdictions to increase housing planning and accelerate housing production in order to***

**OUR MISSION**

*To foster innovative regional solutions that improve the lives of Southern Californians through inclusive collaboration, visionary planning, regional advocacy, information sharing, and promoting best practices.*

**OUR VISION**

*Southern California’s Catalyst for a Brighter Future*

**OUR CORE VALUES**

*Be Open | Lead by Example | Make an Impact | Be Courageous*

*meet housing needs as determined by the sixth Regional Housing Needs Assessment (RHNA). Up to \$47.5 million is available for SCAG under the Regional Early Action Planning Program (REAP) for eligible activities. SCAG recommends to adopt a resolution and authorize SCAG to apply for advance funding for up to twenty-five (25) percent, or \$11.9 million, the maximum allowed for initial early application.*

**BACKGROUND:**

The California 2019-20 Budget Act, also known as Assembly Bill (AB) 101, appropriated two new one-time programs to provide regions and jurisdictions with grants for planning activities to enable jurisdictions to increase housing planning and accelerate housing production in order to meet housing needs as determined by the sixth cycle Regional Housing Needs Assessment (RHNA). There are two programs created under AB 101, which are administered by the California Department of Housing and Community Development (HCD): the Local Government Planning Support Grants Program (LEAP) and the Regional Early Action Planning Program (REAP) (Health and Safety Code Sections 5015 – 5015.5). A total of \$250 million is available Statewide to fund both programs.

The LEAP program intended to provide funding directly to jurisdictions to support local planning efforts and process improvements to facilitate compliance and increase housing production. Cities and counties are authorized to form partnerships with other units of government, including SCAG, where the effort will directly affect land use or development within the participating jurisdiction(s). There are a variety of eligible uses of LEAP funding by jurisdictions, including education and outreach, rezoning strategies and environmental clearance, improving local ordinances that promote housing, surplus sites development, performing infrastructure planning, and covering technical assistance costs associated with eligible activities. Statewide, \$125 million is available for jurisdictions on an over-the-counter basis for applications due by July 1, 2020 under the LEAP program. The LEAP Notice of Funding Availability was issued by HCD on January 28, 2020 for over-the-counter applications that are due July 1, 2020. Cities and counties are eligible for the following maximum LEAP grants from HCD, based on 2018 population, totaling \$50.9 million region-wide:

<u>Population Range</u>	<u>Maximum Grant \$</u>
>/= 750,000	1,500,000
300,000 - 749,999	750,000
100,000 - 299,000	500,000
60,000 - 99,000	300,000
20,000 – 59,999	150,000
<20,000	65,000

The REAP program is intended to provide funding to designated councils of governments including SCAG to accelerate housing production through regional programs and providing funding to local jurisdictions based on criteria developed by SCAG. Of the \$125 million available statewide for the

REAP program, SCAG is eligible to apply for up to \$47,471,023 in one-time funding. Eligible activities overlap with activities outlined in the LEAP program and can be used to supplement or support LEAP-funded activities along with those awarded using Senate Bill (SB) 2 Planning Grants.

### Eligible Activities

State Health and Safety Code 50515.02 provides specific eligible uses under the REAP program:

- Education and outreach strategy to inform local agencies of the need and benefits of taking early action related to the sixth cycle regional housing needs allocation and housing element updates;
- Rezoning and encouraging development by updating planning documents and zoning ordinances, such as general plans, community plans, specific plans, sustainable communities' strategies, and local coastal programs, expressly including:
  - Developing or improving an accessory dwelling unit ordinance
  - Establishing a workforce housing opportunity zone
  - Establishing a housing sustainability district
- Revamping local planning processes and tools to track and speed up housing production/process improvements that expedite local planning and permitting
- Performing infrastructure planning, including sewers, water systems, transit, roads, or other public facilities necessary to support new housing and new residents
- Strategy for increasing adoption of best practices that promote sufficient supply of housing affordable to all income levels
- Establishing regional or countywide housing trust fund for affordable housing
- Performing feasibility studies to determine the most efficient locations to site housing
- Covering the costs of technical assistance, temporary staffing or consultant needs associated with eligible activities

Several of these eligible activities are also specifically expressed as eligible activities for LEAP funding programs and SB 2 Planning grants. SB 2 Planning Grants, separate from AB 101, provide non-competitive funding and technical assistance to local jurisdictions to prepare, adopt, and implement plans and process improvements that streamline housing approvals and accelerate housing production. A chart of these eligible activities as specified in statute is attached to this report. REAP funds can be used to supplement ongoing or planned activities under these other programs since one of the primary objectives of the REAP program is to accelerate housing production. Additionally, other related activities may be eligible under REAP but have not yet been specifically addressed by HCD. SCAG staff will continue to update stakeholders of eligible activities to stakeholders as it becomes available.

### SCAG Regional Early Action Planning Program (REAP)

---

SCAG staff presented a brief overview of AB 101 funding at the October 3, 2019 Community, Economic and Human Development (CEHD) Committee as an information item. As part of the overview, staff identified three main phases of REAP through the end of the program: (1) Outreach and Program Development; (2) Draft Program Framework and Guideline Development and; (3) Program Implementation.

### **Survey of Current and Future Funding Priorities**

The first phase of REAP is outreach and program development and to ensure that the goals of SCAG's REAP program align with the needs of jurisdictions, SCAG staff conducted a brief survey in January 2020, which was distributed to city and county managers and planning directors. The intent of the survey was to gather information on the structure of housing program implementation at the local level and the various priorities for housing funding for jurisdictions. Fifty-three (53) jurisdictions, or 27 percent, provided responses to the survey.

In regard to current funding priorities, the survey revealed a number of top priorities for jurisdictions. These include:

- Education, engagement and outreach (32%)
- Planning for housing-supportive infrastructure (15%)
- Performing feasibility studies (11%)

Other ranked priorities include technical assistance, streamlining local environmental clearance for housing, and streamlining planning and permitting. To implement these activities, jurisdictions indicated that they desired support or technical assistance from HCD, SCAG, and the Governor's Office of Planning and Research (OPR).

Additionally, SCAG staff interviewed a number of subregional agencies to discuss housing funding priorities at the subregional level and housing goal implementation through various funding mechanisms. Currently, one of the subregions has already developed environmental streamlining tools at the subregional level and would like to extend the tools to cover additional measures, which can be used to streamline housing projects at the local level.

Another subregion interviewed provided an overview of their plans to establish a subregional housing trust fund; the Legislature has authorized several in recent years. As part of the passage of AB 101 funding, establishing regional housing trust funds has been specifically identified as a possible activity eligible for funding.

SCAG will incorporate the survey results in developing the Housing Program Framework for REAP and its related funding priorities. The main priorities indicated by survey respondents will be folded

into some of the program areas proposed in the early application for REAP funding, as discussed in the following section.

### **Draft Program and Funding Framework**

At the October 3, 2019 CEHD Committee meeting, SCAG staff identified several draft program areas and funding categories for REAP grant funding. Based on this discussion, SCAG staff has developed a draft Program Framework with Program Objectives and Major Funding Elements, which is attached to this report. In order to advance the identified priorities, SCAG staff will be submitting an early application for REAP funding, pending CEHD Committee and Regional Council action.

### **Early Application for REAP Funding**

The REAP program includes an option for the designated councils of governments, including SCAG, to submit an early application for up to twenty-five (25) percent of the maximum amount it is eligible for – (\$47.5 million for SCAG), or \$11,867,755. The early advancement of funding is intended to jumpstart housing planning activities at the regional and local levels, and for costs of the 6<sup>th</sup> cycle RHNA underway. A portion of the funds may also be sub-contracted for eligible activities.

SCAG staff is proposing an Early Action Plan to apply for the 25 percent share to cover the cost of the 6<sup>th</sup> cycle RHNA Methodology and Allocation process, as well as, to fund the program development costs and some initial work associated with refining and delivering the Draft Program as described above. This would include developing a comprehensive outreach and community engagement program, procuring consultant support to develop guidelines for a direct allocation program, creating new funding categories within SCAG's 2020 Sustainable Communities Program to be issued this summer to support housing preservation and production, and conducting preliminary research and GIS analysis to identify opportunities and barriers to housing production in priority growth areas. The Early Action Plan also includes establishing an Early Action Fund to be leveraged with public and private funds to pilot and spread innovative practices, including by hosting a Housing Innovation Challenge.

A resolution authorizing the application for initial funding by the Regional Council is required prior to submitting an application. Pending recommendation from the CEHD Committee and approval from the Regional Council, SCAG staff will submit an application for the full 25 percent in advance of REAP funding in order to accelerate these key elements. A draft resolution for initial funding is attached to this staff report.

In regard to the full REAP program, SCAG will continue to refine the core elements of the larger framework and will update the Regional Council, CEHD, and stakeholders, in advance of seeking the full funding allocation. The application for the balance of eligible REAP funds must be submitted by COGs by January 31, 2021.

---

### Next Steps

The 6<sup>th</sup> Cycle RHNA process will be completed by October 2020. SCAG staff will continue to participate in regular calls both with HCD staff, and with CalCOG and HCD, to obtain further details and information regarding the eligible activity and other program requirements and process to apply for the full REAP funding, as well as technical assistance for pending housing element updates implementing the RHNA.. While HCD has indicated that the full guidelines for REAP funding will not be released until at least February, the consistent communication between SCAG and HCD will help SCAG prepare and further develop the Housing Program Framework for REAP.

All funds administered under AB 101, including both LEAP and REAP, must be expended by December 31, 2023. Annual reports for use of the REAP funds, along with a final report on the expenditure of funds, including an evaluation of jurisdiction actions taken to support the use of funds and impacts on housing production, will be due to HCD, for reporting to the Legislature, from SCAG by the end of 2024. SCAG staff will provide more updates and information to the Regional Council, CEHD Committee, and stakeholders as they become available.

### **FISCAL IMPACT:**

Current work on the Regional Housing Needs Assessment is included in the current FY 19-20 General Fund Budget (800.0160.03: RHNA). There is no immediate fiscal impact for the tasks proposed under these funds. When awarded, the AB 101 REAP funds will be programmed in the Overall Work Program (OWP).

### **ATTACHMENT(S):**

1. Resolution 20-618-1
2. Housing Program Framework
3. SB 2\_LEAP\_REAP
4. REAP survey.docx





RESOLUTION NO. 20-618-1

A RESOLUTION OF THE SOUTHERN CALIFORNIA ASSOCIATION OF GOVERNMENTS (SCAG) APPROVING REGIONAL EARLY ACTION PROGRAM (REAP) RESOLUTION FOR ADVANCE ALLOCATION REQUEST

SOUTHERN CALIFORNIA ASSOCIATION OF GOVERNMENTS 900 Wilshire Blvd., Ste. 1700 Los Angeles, CA 90017 T: (213) 236-1800 www.scag.ca.gov

A NECESSARY QUORUM AND MAJORITY OF THE REGIONAL COUNCIL OF SOUTHERN CALIFORNIA ASSOCIATION OF GOVERNMENTS ("APPLICANT") HEREBY CONSENTS TO, ADOPTS AND RATIFIES THE FOLLOWING RESOLUTION:

REGIONAL COUNCIL OFFICERS

- President Bill Jahn, Big Bear Lake
First Vice President Rex Richardson, Long Beach
Second Vice President Clint Lorimore, Eastvale
Immediate Past President Alan D. Wapner, San Bernardino County Transportation Authority

WHEREAS, the Southern California Association of Governments (SCAG) is the Metropolitan Planning Organization, for the six county region consisting of Los Angeles, Orange, San Bernardino, Riverside, Ventura, and Imperial counties;

WHEREAS, the State of California (the "State"), Department of Housing and Community Development ("Department") is authorized to provide up to \$125,000,000 to Councils of Governments and Fiscal Agents of Multiagency Working Groups under the Regional Early Action Planning grant program (REAP), the regional component of the Local Government Planning Support Grants Program (as described in Health and Safety Code section 50515.02);

COMMITTEE CHAIRS

- Executive/Administration Bill Jahn, Big Bear Lake
Community, Economic & Human Development Peggy Huang, Transportation Corridor Agencies
Energy & Environment Linda Parks, Ventura County
Transportation Cheryl Viegas-Walker, El Centro

WHEREAS, the Department issued a Notice and Request for Advance Allocation on October 10, 2019 for Regional Early Action Planning grants available to Councils of Government and Fiscal Agents of Multiagency Working Groups;

WHEREAS, Applicant is a Council of Governments or Fiscal Agent of a Multiagency Working Group eligible to submit a Request for Advance Allocation pursuant to Health and Safety Code section 50515.02(d)(3) to develop and accelerate the implementation of the requirements contained in the Council of Governments or Multiagency Working Group's application pursuant to Health and Safety Code section 50515.02(d)(1) including the development of an education and outreach strategy related to the sixth cycle regional housing need allocation;

WHEREAS, the Department shall approve the advance allocation request, subject to the terms and conditions of Eligibility, Guidelines, NOFAs, Program requirements, and the Standard Agreement by and between the Department and Local Government Planning Support Grant Recipients; and

NOW, THEREFORE, BE IT RESOLVED, THAT the Applicant is hereby authorized and directed to request an advance allocation not to exceed \$11,867,755 (up to 25% of the amount allocated pursuant to Health and Safety Code section 50515.02(b) consistent with the methodology described in 50515.03(a)).

Attachment: Resolution 20-618-1 [Revision 1] (Resolution No. 20-618-1 Regarding Regional Funding for Housing)

**BE IT FURTHER RESOLVED THAT:**

1. The Executive Director of the Southern California Association of Governments is hereby authorized to execute the Advance Allocation Request, on behalf of the Applicant as required by the Department for receipt of REAP funds;

2. When the Applicant receives an advance allocation of REAP funds in the authorized amount of \$ 11,867,755 from the Department pursuant to the above referenced Advanced Allocation Request, it represents and certifies that it will use all such funds only for eligible activities as set forth in Health and Safety Code section 50515.02(d)(1), as approved by the Department and in accordance with all REAP requirements, guidelines, all applicable state and federal statutes, rules, regulations, and the Standard Agreement executed by and between the Applicant and the Department; and

3. The Executive Director of the Southern California Association of Governments is hereby authorized to enter into, execute, and deliver a State of California Standard Agreement for the amount of \$11,867,755, and any and all other documents required or deemed necessary or appropriate to evidence and secure the REAP advance allocation, the Applicant obligations related thereto, and all amendments the Department deems necessary and in accordance with REAP.

**PASSED, APPROVED AND ADOPTED** by the Regional Council of the Southern California Association of Governments at its regular meeting this 6<sup>th</sup> day of February, 2020.

---

William "Bill" Jahn  
President, SCAG

Attested by:

---

Kome Ajise  
Executive Director

Approved as to Form:

---

Justine Block  
Deputy Legal Counsel

## SCAG: DRAFT Regional Housing Program Framework

### Program Objectives

- Advance Connect SoCal growth vision
- Link to 6<sup>th</sup> Cycle RHNA allocation; compliance
- Maximize funding allocations; Expend funding
- Complement and increase competitiveness for state funding programs, including by increasing number of “prohousing local policies” cities who receive preference in state programs.
- Build longer term capacity to address housing issues, including by:
  - Facilitating compliance with state housing law
  - Strengthening regional/sub-regional partnerships, collaborations and funding models
  - Establishing regional/subregional vision that marries housing/transportation objectives

### Preliminary Program Areas

---

#### *Early Action Items (SCAG/AB 101 Funded)*

- **Stakeholder Engagement (Fall/Winter):** Survey, focus groups, President’s Housing Taskforce to gain input on program elements
- **Opportunity Analysis (May 2020)**—Consultant study analyzing barriers/opportunities to development in Connect SoCal Priority Growth Areas. Deliverables: Lit Review; Case Studies, Development Check-list.
- **Housing Innovation Challenge & Showcase (May 2020)**—Pending partnership with foundation to identify, showcase innovative planning, funding, or production models through competitive Call for Solutions (open to public, private, non-profit)
- **Collaborate, Align Regional Housing Initiatives**—Partner to form Regional Housing Steering Committee. Coalition of coalitions focused on leaders in public, private, non-profit sector.
- **RHNA Methodology/Allocation**—Reimburse staff expenses associated with 6<sup>th</sup> Cycle.

#### *Core REAP Program Elements (AB 101 Funded)*

- 1. Housing Planning & Policy Education & Local Leadership Development**
  - Policy Committees, Workshops, Trainings on RHNA, Housing Elements, Best Practices
  - Public Education Materials
- 2. Direct Allocations tied to RHNA Methodology**
  - **Sub-regional/City Partnerships Focused on Housing Element Updates**
    - Examples: Local/Regional Housing Elements, Model Ordinances, Uniform Standards
  - **Job-Transit-Housing Acceleration Fund**
    - Direct Allocation to jurisdiction with highest allocations of Existing Need
    - TOD Partnerships—Metrolink, County Transportation Commissions
- 3. Competitive Program: Expand/Augment Local Planning Technical Assistance Program**
  - **Example Categories:** Housing Supportive Infrastructure, EIFD, Parking Reform, 743, Smart Permitting System, Civic Engagement Plans
- 4. Regional Action Plan (Connect SoCal/RHNA alignment)**
  - Priority Growth Area Capacity Analysis & Data Tools to Support Housing Element Updates
  - Beyond Siting/Zoning: Regional Funding Models, Public Education Campaign, Etc...

**Eligible Statutory Uses of Housing Planning Funds  
Pursuant to SB 2 (2017) and AB 101 (2019)\***

	<b>Eligible Use or Topic</b>	<b>SB 2 H&amp;S 50470</b>	<b>LEAP H&amp;S 50515.03.</b>	<b>REAP H&amp;S 50515.02**</b>
<b>A</b>	Education and outreach strategy to inform local agencies of the need and benefits of taking early action related to the sixth cycle regional needs allocation and housing element updates		X	X
<b>B</b>	Rezoning and encouraging development by updating planning documents and zoning ordinances, such as general plans, community plans, specific plans, sustainable communities' strategies, and local coastal programs; Expressly including: <ul style="list-style-type: none"> <li>• Developing or improving an accessory dwelling unit ordinance</li> <li>• Establishing a workforce housing opportunity zone pursuant to Article 10.10, commencing with Gov. Code Section 65620</li> <li>• Establishing a housing sustainability district pursuant to Ch. 11, commencing with Gov. Code Section 66200.</li> </ul>	X	X  X  X  X	X
<b>C</b>	*Completing environmental clearance to eliminate the need for project-specific review.	X	X	
<b>D</b>	Revamping local planning processes and tools to track and speed up housing production/ process improvements that expedite local planning and permitting.	X	X	X
<b>E</b>	Performing infrastructure planning, including for sewers, water systems, transit, roads, or other public facilities necessary to support new housing and new residents.		X	X
<b>F</b>	*Partnering with other local entities to identify and prepare excess property for residential development		X	
<b>G</b>	Strategy for increasing adoption of best practices that promote sufficient supply of housing affordable to all income levels	X		X
<b>H</b>	Establishing regional or countywide housing trust fund for affordable housing			X
<b>I</b>	Performing feasibility studies to determine the most efficient locations to site housing			X
<b>J</b>	Covering the costs of technical assistance, temporary staffing or consultant needs associated with eligible activities	X	X	X
<b>K</b>	Other	X	X	X
	<b>Expenditure Deadline</b>	2022	2023	2023

Priority Policy Areas for Accelerating Housing Production

- Rezone to Permit By-right
- Expedited Processing
- Objective Design and Development Standards
- Specific Plans or Form-based Codes Coupled with CEQA Streamlining
- Accessory Dwelling Units or Other Innovative Building Strategies
- Housing Related Infrastructure Financing & Fee Reduction Strategies

\*Note that determination of whether some uses specified as eligible uses pursuant to SB or LEAP may also be eligible uses for the REAP program is yet pending determination by HCD.

\*\* Sub-allocation of funds must be used for housing-related planning activities, including, but not limited to permitting processes, tracking systems, planning tools; housing trust funds for affordable housing; infrastructure planning; and feasibility studies .(H&S 50515.02(f)).

# REAP Survey

## Survey Introduction

SCAG wants to know how we can best support your jurisdiction in planning for housing. The 2019-20 Budget Act appropriated funds for two new one-time programs to provide regions and jurisdictions with grants for local planning activities to enable jurisdictions to meet the sixth cycle of the regional housing need assessment (RHNA), to increase housing planning and accelerate housing production.

Under the **Local Government Planning Support Grants Program**, there are two separate appropriations – one for local governments directly (LEAP), and the **Regional Early Action Planning Program (REAP)** to be administered by councils of governments or specified regional entities. More information on LEAP and REAP can be accessed [here](#). A portion of the REAP funds will support RHNA processes of COGs, including completion of SCAG’s pending RHNA.

Your feedback is solicited in a brief survey to support establishing priorities for use of the REAP funds within the SCAG region, within the statutorily eligible uses. **This survey should take no longer than 10 minutes to complete.** Please consider the highest needs within your local government for the REAP funds. Consider them relative to the SB 2 or LEAP funds your jurisdiction may also receive for related planning activities, and accommodating the RHNA for your jurisdiction’s housing element update and any related implications for updating other general plan elements. Please submit your survey answers no later than Wednesday, January 22, 2020.

SCAG is considering multiple options and can administer the funds through a combination of technical assistance, competitive funding opportunities to counties, consultants or entities serving multiple jurisdictions, and through limited direct allocations to local governments. The planning activities are to accommodate the development of housing and infrastructure that will accelerate housing production in a way that aligns with state planning priorities, housing, transportation, equity, and climate goals.

HCD will issue Notices of Funding Availability (NOFAs) for each of these programs in the spring of 2020; these short-term funds must be expended by the end of 2023 and require subsequent reporting to the Legislature. These programs compliment the SB 2 Planning Grants most jurisdictions were eligible to apply for in 2019, and which have been or are currently being awarded by HCD (see [Accelerating Housing Production](#)).

We look forward to receiving your survey responses by January 22, 2020. If you have any questions about this survey or would like more information on SCAG’s Housing Program, please email [housing@scag.ca.gov](mailto:housing@scag.ca.gov).

## REAP Survey

1. Please type the name of your jurisdiction (optional): \_\_\_\_\_
  
2. This survey is being completed by, or on behalf of, which of the following?
  - Community Development or Planning Director
  - City Manager or other city or county administrator
  - Planner
  - Community Development or planning support staff
  - Other (please specify): \_\_\_\_\_
  
3. Estimate the approximate size of the Community Development, Planning, or Housing Department or other staff of your jurisdiction with housing-related responsibilities:
  - 0 – 2
  - 3 – 5
  - 6 – 10
  - 11- 24
  - 25 – 50
  - > 50
  
4. When was your jurisdiction’s most recent comprehensive or substantial General Plan update, including concurrent update of at least the land use, transportation, safety and housing elements?
  - Within the last 4 years (after January 2016)
  - 5-9 years ago ( 2011 – 2015)
  - 10-14 years ago (2006 - 2010)
  - 15-19 years ago (2000 – 2005)
  - Over 20 years ago (prior to 2000)
  - Don’t know
  
5. Of the recent legislative changes in State housing laws, as well as related general plan update provisions, rank your jurisdiction’s areas of greatest need for information or best practices (e.g. webinars, brochures, public information campaign, etc.)?
  - Housing element requirements
  - General plan update requirements, e.g., safety, environmental justice, conservation
  - Annual Progress Reporting requirements
  - Permit processing, Housing Accountability Act
  - Accessory Dwelling Units
  - Development standards restrictions
  - Residential development impact fees
  - Density bonus law
  - Inclusionary zoning
  - SB 2 Permanent Local Housing Assistance Program

## REAP Survey

6. Are there any other areas for which you would like more information not listed in question 5? If yes, please specify. \_\_\_\_\_
7. Indicate any of the following Priority Policy Areas for Accelerating Housing Production your jurisdiction has either adopted, have underway, or want to pursue:
- Rezoning to Permit By-right Development
  - Expedited Processing
  - Objective Design and Development Standards
  - Specific Plans or Form-based Codes Coupled with CEQA Streamlining
  - Accessory Dwelling Units or Other Innovative Building Strategies
  - Housing Related Infrastructure Financing & Fee Reduction Strategies
8. If your jurisdiction applied for or has been awarded SB 2 Planning funds by the State Department of Housing and Community Development (HCD), please check all of the following categories for the awarded or pending use of SB 2 Planning funding in your jurisdiction:
- Rezoning, updating planning documents and zoning ordinances. Examples include updating general plan, adopting community plans, specific plans, local coastal programs, etc.
  - Streamlining permitting process for environmental clearance.
  - Streamlining process to expedite local planning and permitting to speed up housing production
  - Adopting strategies and best practices to promote sufficient supply of housing affordable to all income levels.
  - Hiring consultants or temporary staffing, or the use of technical assistance associated with eligible activities
  - Jurisdiction did not apply for SB2 funds
  - Other (please specify): \_\_\_\_\_
9. How familiar are you with the Regional Early Action Planning Program (REAP) (also known as 2019-20 Budget Act or AB 101)? More information on REAP can be accessed [here](#).
- Hadn't heard of it before this survey
  - I've heard of upcoming State housing funding, but not specifics
  - I've read the provisions of AB 101 regarding LEAP and REAP funds prior to receiving this survey
10. Please rank the following eligible uses of REAP funding based on what your jurisdiction has the greatest or most immediate need for:
- Education, engagement and outreach to successfully adopt housing elements and promote housing production (e.g., community workshops, local leadership development, civic engagement plans, etc.)
  - Rezoning and encouraging development by updating planning documents and zoning ordinances (e.g., general plans, community or specific plans, sustainable

## REAP Survey

communities' strategies, accessory dwelling unit ordinances, local coastal programs)

- Streamlining local environmental clearance for housing development
- Streamlining planning and permitting to accelerate housing production (e.g. smart permitting or tracking system)
- Planning housing supportive infrastructure and its financing, e.g. sewer and water systems, roads, transit, and other public facilities, structuring EIFDs, parking or development impact fee reform
- Developing best practice strategies for promoting housing and housing affordability along with other related objectives (e.g., alignment with SCAG's Connect SoCal Plan, promoting priority growth area development and resource conservation; increasing mode shift, reducing VMT)
- Establish a county or regional housing trust fund for affordable housing
- Performing feasibility studies to determine efficient locations to site housing (adequate housing element land inventory sites, transit oriented development)
- Technical assistance, temporary staffing, or consultant needs associated with eligible activities

11. Are there any other uses of REAP funding not listed in question 10 that your jurisdiction has the greatest of most immediate need for? If yes, please specify. \_\_\_\_\_

12. How are each of the following policy or program types implemented in your jurisdiction: Changes to Land use plans or development regulations, application permitting (general plan, zoning ordinances, design review); Development or operation of housing programs, including administering local, state or federal loan or grant programs. Please check all that apply:

- By dedicated staff with housing expertise within the community development or planning department
- By available non-specialized staff of our jurisdiction
- Under contract with a County-level housing authority/commission
- By an independent third-party public agency other than the County
- By private for-profit Consultant(s)
- By non-profit community or housing development organization(s) (CBOs or CHDOs)
- Other (please specify): \_\_\_\_\_

13. When implementing or seeking to implement these activities, indicate your jurisdiction's desire for support, technical assistance or operation from or by external sources such as any of the following. Please check all that apply:

- California Department of Housing and Community Development (HCD)
- Governor's Office of Planning and Research (OPR)
- Caltrans
- SCAG
- Subregional agency



## REAP Survey

- County department, agency or housing authority
- Joint partnership authority (JPA) or administrative partnership of two or more public agencies, including HOME Consortium or CDBG Urban County Agreement, or Continuum of Care
- Private for-profit consultant(s)
- Nonprofit community or housing development organization(s)
- Unsure
- Need only funding of activities to be implemented by staff of our jurisdiction
- Any other agency or organization not listed. Please specify. \_\_\_\_\_

14. What extent of involvement with the REAP program is your jurisdiction interested in?

Check all that apply.

- Participation in initial focus group
- Participation in a working group on implementation
- SCAG-sponsored webinars, e.g. Toolbox Tuesdays
- Peer-learning opportunities with other local governments or stakeholders
- General reporting in SCAG newsletters or committee agendas
- Not sure
- Other (please specify): \_\_\_\_\_



Southern California Association of Governments  
900 Wilshire Boulevard, Suite 1700, Los Angeles, California 90017  
February 6, 2020

To: Energy and Environment Committee (EEC)

EXECUTIVE DIRECTOR'S  
APPROVAL

From: Grieg Asher, Program Manager I, Sustainability, (213) 236-1869, asher@scag.ca.gov

Subject: Public Safety Power Shutoff

**RECOMMENDED ACTION:**

Information Only – No Action Required

**STRATEGIC PLAN:**

This item supports the following Strategic Plan Goal 2: Advance Southern California’s policy interests and planning priorities through regional, statewide, and national engagement and advocacy.

**EXECUTIVE SUMMARY:**

*Garrett Wong, Climate Program Manager for the County of Santa Barbara and the Chair of the Local Government Sustainable Energy Coalition (LGSEC) will present an overview of recent Public Safety Power Shutoffs (PSPS) events, and discuss opportunities to mitigate disruptive impacts.*

**BACKGROUND:**

A PSPS is a temporary “de-energization” event that occurs when utility providers proactively turn off power in high fire risk areas to reduce the threat of wildfires. Weather conditions such as strong winds, high temperatures, low humidity and dry vegetation can contribute to infrastructure malfunction, possibly creating a wildfire. Although temporary and intended to improve community safety, PSPS events can be inconvenient for residents, businesses and local governments; cause widespread disruption and economic losses; and have significant impacts on public health and welfare. In 2018, the California Public Utilities Commission (CPUC) strengthened customer notification requirements before PSPS events, ordered utilities to engage local communities in developing de-energization programs, and required utilities to submit a report within ten (10) days after each de-energization event.

Garrett Wong, Climate Program Manager for the County of Santa Barbara and the Chair of the LGSEC, will present an overview of recent PSPS events, and discuss opportunities to mitigate the disruptive impacts. The LGSEC advocates for its city, county and local agency members on statewide policy and program issues for sustainable energy, energy efficiency, local renewable power and related issues.

**OUR MISSION**

*To foster innovative regional solutions that improve the lives of Southern Californians through inclusive collaboration, visionary planning, regional advocacy, information sharing, and promoting best practices.*

**OUR VISION**

*Southern California’s Catalyst for a Brighter Future*

**OUR CORE VALUES**

*Be Open | Lead by Example | Make an Impact | Be Courageous*



**FISCAL IMPACT:**

No Fiscal Impact. This is not a SCAG funded project.

**ATTACHMENT(S):**

1. PowerPoint Presentation - LGSEC

# Responding to Public Safety Power Shutoffs

Garrett Wong

Board Chair, LGSEC

Climate Program Manager, County of Santa Barbara



LOCAL GOVERNMENT  
**SUSTAINABLE  
ENERGY COALITION**

Attachment: PowerPoint Presentation - LGSEC (Public Safety Power Shutoff)

## About LGSEC



# Public Safety Power Shutoff (PSPS)

- De-energization to prevent ignitions from powerlines
- Used during extreme fire conditions
- Primarily impacts circuits in high fire risk areas
- Other circuits in non-high fire risk areas may be impacted if transmission lines are de-energized
- Red Flag Warning does not mean a PSPS will be called
- Actual frequency of PSPS events will depend on various weather and environmental factors
- Decision will be made with most accurate assessment of realtime information and situational awareness data

## PSPS Regulatory Update

- California Public Utilities Code (PU Code) Sections 451 and 399.2(a)
- CPUC Rulemaking
- CPUC Phase 1 Decision
- CPUC Phase 2
- IOUs may shut off electric power, referred to as "de-energization" or Public Safety Power Shut-offs (PSPS), to protect public safety under California law

# PSPS Regulatory Update

- California Public Utilities Code (PU Code) Sections 451 and 399.2(a)
- **CPUC Rulemaking (12/2018)**
- CPUC Phase 1 Decision
- CPUC Phase 2
- **Examine utilities' PSPS processes and practices**
- **Impacts on communities and access and functional needs populations**
- **Efforts to reduce the need for de-energization**
- **Mitigate measures to reduce the impacts when implemented**

# PSPS Regulatory Update

- California Public Utilities Code (PU Code) Sections 451 and 399.2(a)
- CPUC Rulemaking
- **CPUC Phase 1 Decision (5/2019)**
- CPUC Phase 2
- **Made improvements to utility communication and notification protocols to ensure that clear rules are in place as early as possible to prepare for the 2019 fire season**

# PSPS Regulatory Update

- **California Public Utilities Code (PU Code) Sections 451 and 399.2(a)**
- **CPUC Rulemaking**
- **CPUC Phase 1 Decision**
- **CPUC Phase 2 (suspended)**
- **Identification and communication with access and functional needs populations**
- **Communication with customers while the power is turned off**
- **Communication during reenergization**
- **Mitigation measures**
- **Coordination with emergency responders**
- **Transmission-level de-energization**

## State Funding

### Cal Office of Emergency Services (2019)

- **\$75M to local government OEMs to prepare & respond to PSPS**
- **Cities – grant for \$500,000 per applicant; \$10M**
- **Counties received direct allocation to Authorized Agent**
  - **Ex. County of Santa Barbara OEM received \$467,300**

# Governor's Proposed State Budget (2020)

## \$4.75 Climate Resilience Bond

- 5-yr investment bond in natural & built infrastructure, targeting climate-vulnerable communities
  - \$250M to for Strategic Growth Council – Community Resilience Planning & Community Resilience Centers
  - \$500M to Natural Resources Agency, CalFire & OES – Hardening of Critical Community Infrastructure

## SB 45 - Wildfire Prevention, Safe Drinking Water, Drought Preparation, and Flood Protection Bond Act

- \$2.2Bn – Wildfire Prevention and Community Resilience from Climate Impacts
  - \$1.47Bn – Safe Drinking H2O and protecting water supply and quality from climate risks
  - \$620M – Protecting Fish and Wildlife from Climate Risks
  - \$970M – Protecting Agricultural Lands from Climate Risks
  - \$60M – Climate Resilience, Workforce Development, and Education
- \$175M – Grants to ... incentivize installation of microgrids, distributed generation and storage systems, or in-home backup power systems, powered by clean energy that provide continuity of electrical service in response to, or anticipation of, disruption due to public safety power shutoffs, wildfire, or other disaster.



# SB 45 - Wildfire Prevention, Safe Drinking Water, Drought Preparation, and Flood Protection Bond Act

- **\$2.2Bn – Wildfire Prevention and Community Resilience from Climate Impacts**
- **\$1.47Bn – Safe Drinking H2O and protecting water supply and quality from climate risks**
- **\$620M – Protecting Fish and Wildlife from Climate Risks**
- **\$970M – Protecting Agricultural Lands from Climate Risks**
- **\$60M – Climate Resilience, Workforce Development, and Education**

**\$395M – Establishment of cooling centers, clean air centers, hydration stations, emergency shelters, back up solar power and storage, and facilities, including fairgrounds, to safeguard vulnerable populations from extreme heat events and air pollution caused by wildfires and from other public health threats exacerbated by climate change.**

## What can local governments & SCAG do?

- **Contact SCE to understand where your community is vulnerable**
- **Work with local community based organizations and health providers**
- **Start pre-planning for energy resilience...**
  
- **Become a party to CPUC proceeding and other related proceedings (i.e. Microgrid deployment)**
  - **Independently (\$\$\$)**
  - **Join other local governments (Joint Local Governments - approx. \$75k per LG)**
  - **Join Local Government Sustainable Energy Coalition (>\$7,000)**

# Thank you!

LGSEC.ORG



LOCAL GOVERNMENT  
**SUSTAINABLE**  
ENERGY COALITION

Attachment: PowerPoint Presentation - LGSEC (Public Safety Power Shutoff)



Southern California Association of Governments  
900 Wilshire Boulevard, Suite 1700, Los Angeles, California 90017  
February 6, 2020

To: Energy and Environment Committee (EEC)

EXECUTIVE DIRECTOR'S  
APPROVAL

From: Anita Au, Associate Regional Planner, Compliance &  
Performance Monitoring, 213-236-1874, Au@scag.ca.gov

Subject: Update on AB 617 Community Plans in the South Coast AQMD

**RECOMMENDED ACTION:**

For Information Only - No Action Required

**STRATEGIC PLAN:**

This item supports the following Strategic Plan Goal 2: Advance Southern California's policy interests and planning priorities through regional, statewide, and national engagement and advocacy.

**EXECUTIVE SUMMARY:**

*In 2017, Assembly Bill (AB) 617 was signed into law and required the California Air Resources Board and air districts in California to conduct community level air monitoring. In efforts to achieve AB 617 requirements, the South Coast Air Quality Management District (South Coast AQMD) conducted extensive outreach to gather input for the community selection process and community air monitoring plans. South Coast AQMD chose three communities in Year 1 and two communities in Year 2 that are in the SCAG region.*

**BACKGROUND:**

South Coast AQMD's mission is to clean the air and protect the health of all residents in the South Coast Air District through practical and innovative strategies. They are a regional government agency tasked with achieving federal clean air standards in order to protect public health in Southern California serving 4 counties, over 10,000 square miles and home to nearly 17 million people and over 12 million vehicles.

Signed in 2017, AB 617 develops a new community focused program to more effectively reduce exposure to air pollution and preserve public health. AB 617 includes five (5) central components, including community-level air monitoring, a state strategy and community specific emission reduction plans, accelerated review of retrofit pollution control technologies on industrial facilities subject to Cap-and-Trade, enhanced emission reporting requirements, and increased penalty provisions for polluters.

**OUR MISSION**

*To foster innovative regional solutions that improve the lives of Southern Californians through inclusive collaboration, visionary planning, regional advocacy, information sharing, and promoting best practices.*

**OUR VISION**

*Southern California's Catalyst for a Brighter Future*

**OUR CORE VALUES**

*Be Open | Lead by Example | Make an Impact | Be Courageous*

---

In efforts to comply with AB 617 requirements, South Coast AQMD staff have hosted numerous workshops and meetings to gather input for the community selection process. Three communities were selected for the AB 617's first year of implementation: the Muscoy community in San Bernardino, the Wilmington, Carson, West Long Beach area, and the Boyle Heights, East Los Angeles, and West Commerce community. South Coast AQMD staff conducted extensive community outreach and engagement which included 28 Community Steering Committees (CSC) meetings and 60+ individual meetings and various workshops, bus tours and technical advisory group meetings. Year 2 communities were recently selected which include the South Gate, Huntington Park, Florence-Firestone community and the Eastern Coachella Valley community, which includes Indio, Coachella, Thermal, Oasis, Mecca and North Shore, and will begin to the CSC meetings this year.

**FISCAL IMPACT:**

Work associated with this item is included in the Fiscal Year 2019-2020 Overall Work Program (020.0161.06: Environmental Justice Outreach and Policy Coordination).

**ATTACHMENT(S):**

1. PowerPoint Presentation - AB 617 Update

# Update on AB 617 Community Plans in the South Coast AQMD

---



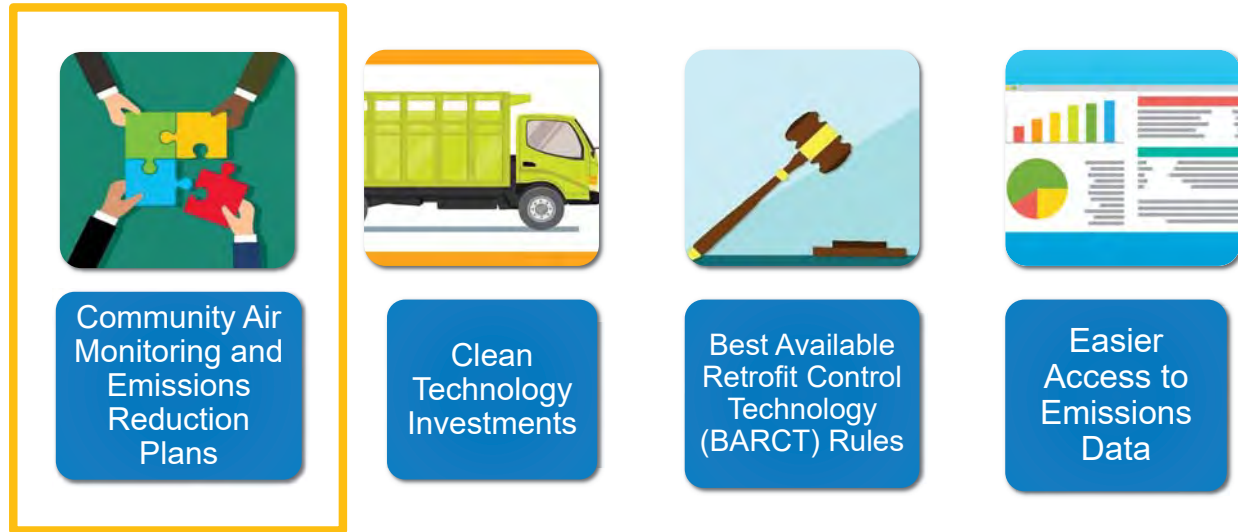
JO KAY GHOSH, PH.D.  
DIRECTOR OF COMMUNITY AIR PROGRAMS  
FEBRUARY 6, 2020  
SCAG REGIONAL COUNCIL MEETING

## Community Prioritization and AB 617-Designated Communities

---

# Assembly Bill (AB) 617

- Statewide environmental justice program
- To address equity through efforts that will benefit environmental justice communities



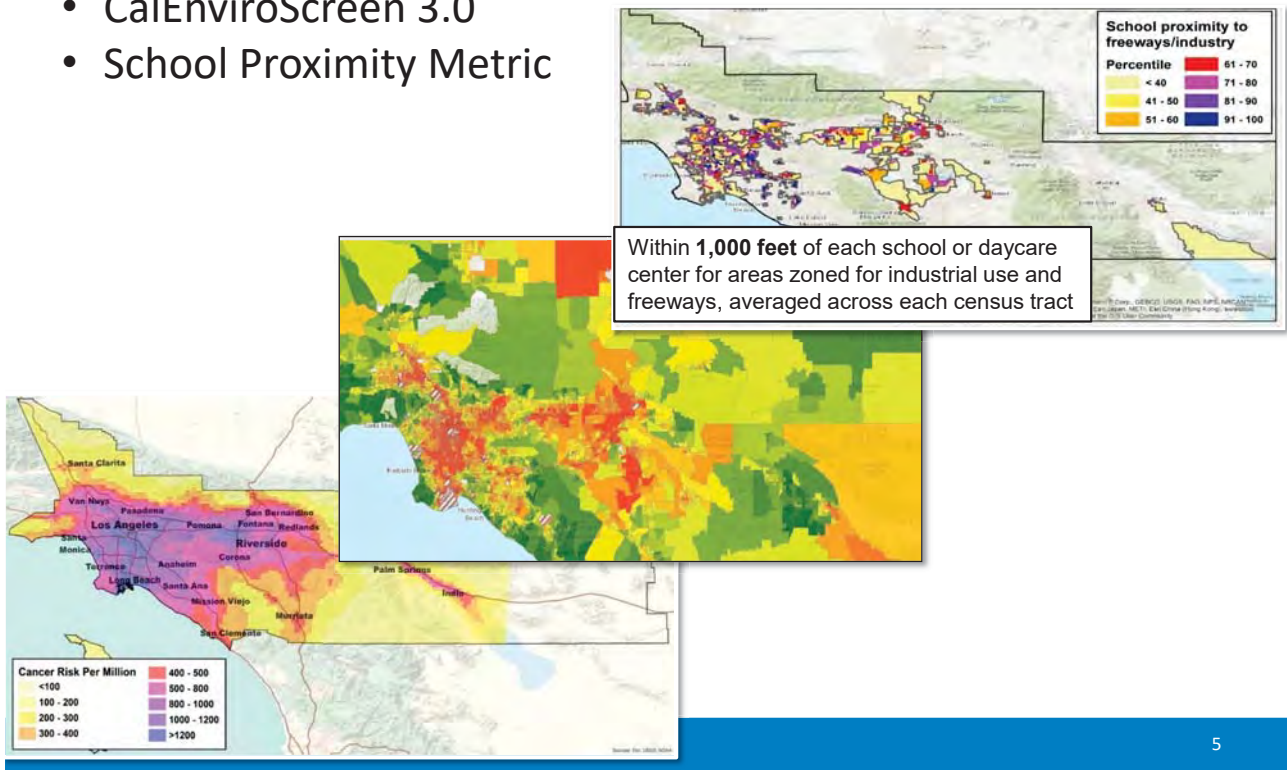
3

## Community Prioritization Elements

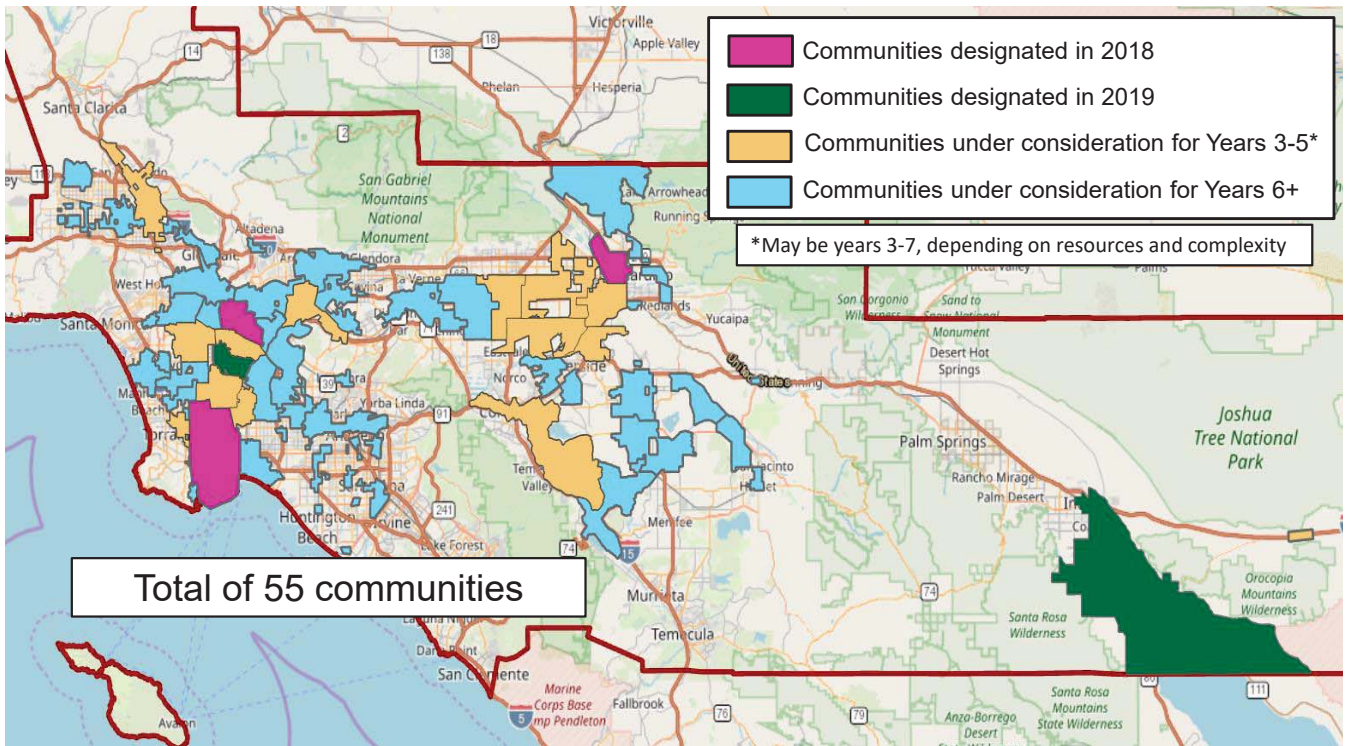
Public Process	Technical Data	Additional Factors
<ul style="list-style-type: none"><li>• Community Meetings</li><li>• Community Nominations</li></ul>	<ul style="list-style-type: none"><li>• Air Toxics</li><li>• Pollution and Population Factors</li><li>• Land Use Proximity</li></ul>	<ul style="list-style-type: none"><li>• Monitoring Data</li><li>• Community Plans</li><li>• Community Readiness</li></ul>

# Technical Data Sources

- Multiple Air Toxics Exposure Study IV (MATES IV)
- CalEnviroScreen 3.0
- School Proximity Metric



## Designated & Potential Future Communities



# AB 617 Designated Communities



## 2018-designated communities:

- Wilmington, Carson, West Long Beach
- San Bernardino, Muscoy
- East Los Angeles, Boyle Heights, West Commerce

## 2019-designated communities:

- Southeast Los Angeles
- Eastern Coachella Valley



## Community Plan Development Process

### 2018-DESIGNATED COMMUNITIES



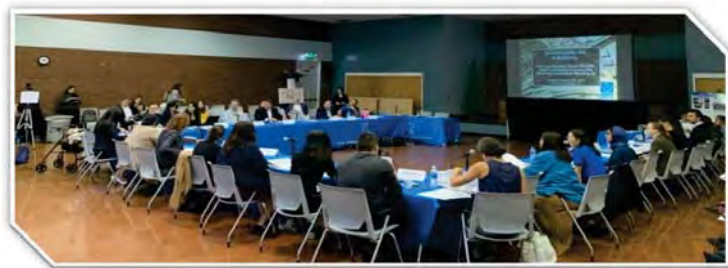
# Community Steering Committees (CSCs)

- Identified and prioritized air pollution concerns
- Guided strategies and provided input for community plans

## Members include:

- Active residents and community leaders
- Local business owners or workers, labor unions
- Community organizations
- Local agencies
- Schools
- Hospitals
- Elected officials

## Land use agencies represented:



9

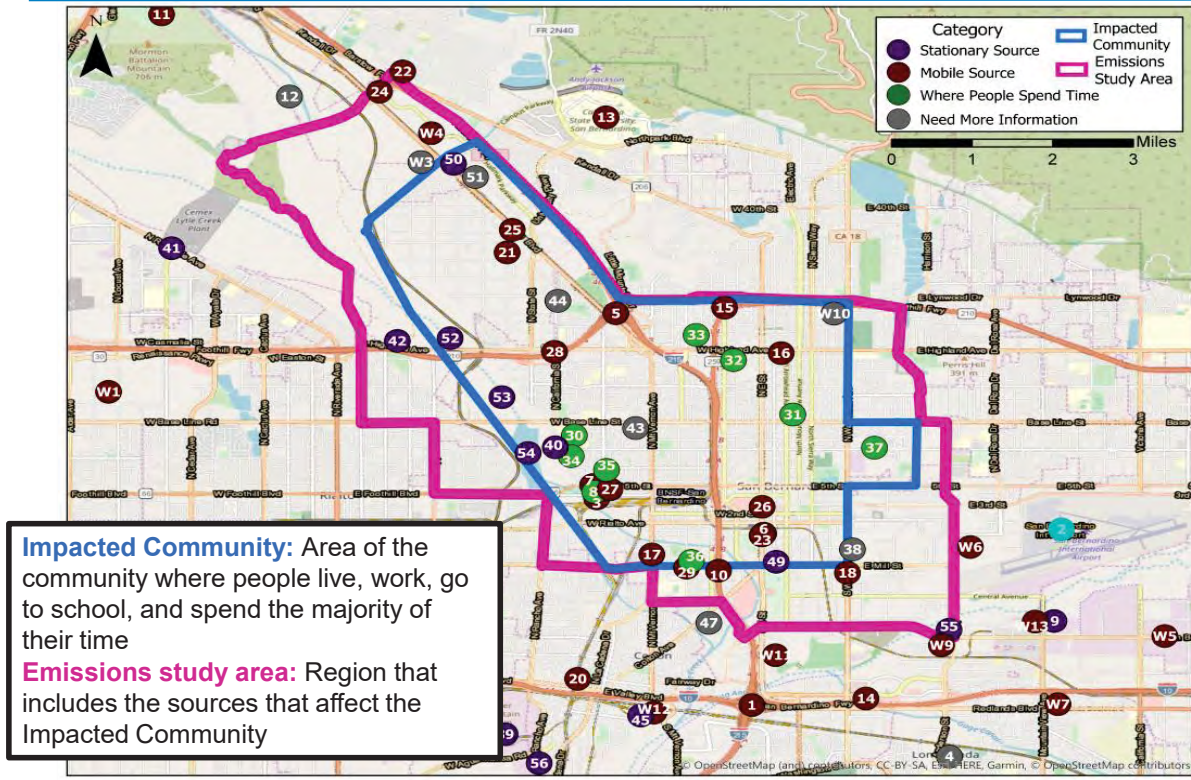
# Community Engagement

## Extensive Community Engagement:

- 3 Community Steering Committees (CSCs)
- 27 CSC meetings
- 60+ individual meetings
- 3 community bus tours
- 3 Technical Advisory Group meetings
- 6 community workshops



# Community Boundary - Example



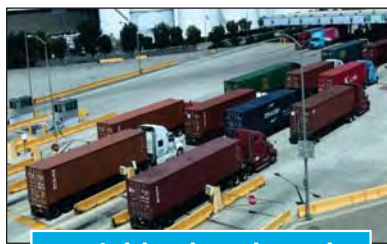
11

## Air Quality Priorities

Wilmington, Carson, West Long Beach Community



Ports



Neighborhood Truck Traffic



Railyards



Refineries



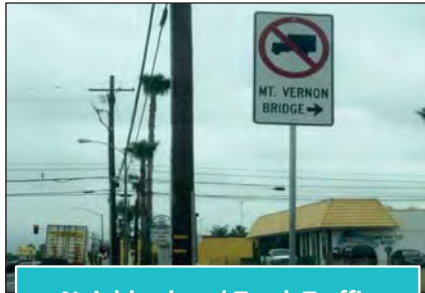
Oil Drilling and Production



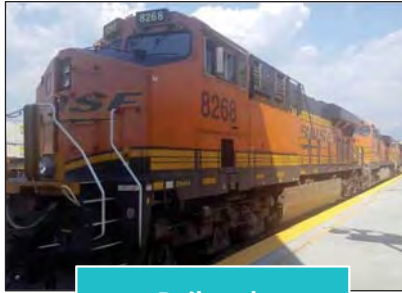
Schools, Childcare Centers, Homes

# Air Quality Priorities

## San Bernardino, Muscoy Community



Neighborhood Truck Traffic



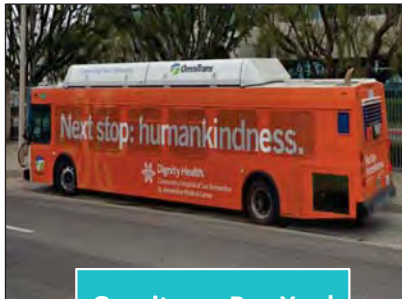
Railyards



Warehouse On-Site Emissions



Concrete Batch Plants



Omnitrans Bus Yard



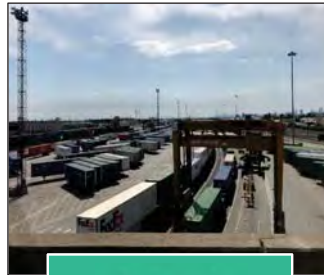
Schools, Childcare Centers, Community Centers, and Homes

# Air Quality Priorities

## East Los Angeles, Boyle Heights, West Commerce Community



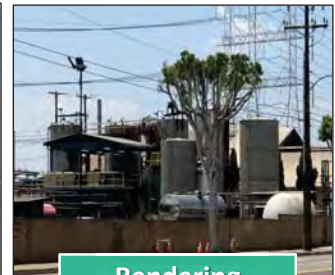
Neighborhood and Freeway Truck and Automobile Traffic



Railyards



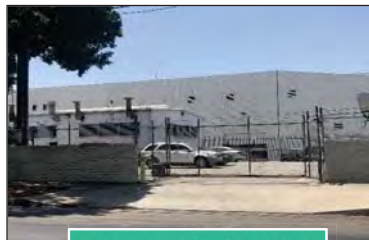
Metal Processing Facilities



Rendering Facilities



Auto Body Shops



General Industrial Facilities, etc.



Schools, Childcare Centers, Community Centers, Libraries and Public Housing Projects

# Community Emissions Reduction Plans (CERPs)

2018-DESIGNATED COMMUNITIES

## CERP Development

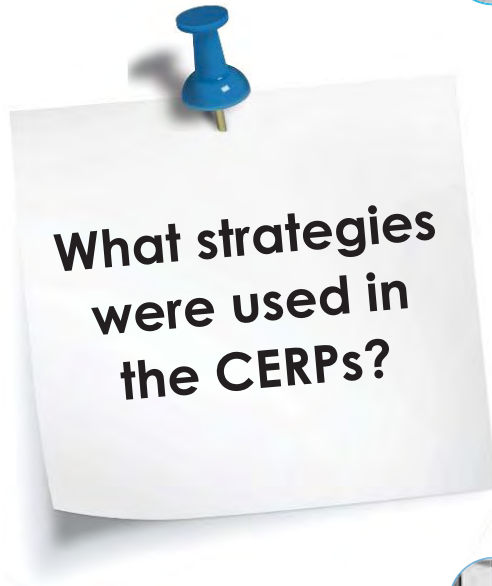
### Community-Driven Efforts to Develop the CERPs

- Includes **actions** to reduce emissions in partnership with community stakeholders
- Each action includes:
  - Suite of strategies
  - Steps
  - Timeline/milestones
  - Metrics to track progress
  - Collaborating entities



\*Plans are flexible to adapt to new information

# CERP Strategies



## Examples of Actions to Reduce Mobile Source Emissions



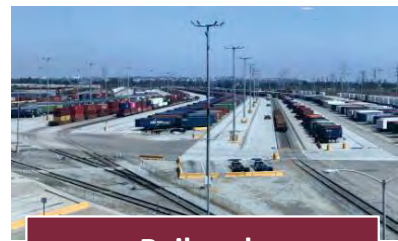
**Ports**

- Oil tanker VOC leak surveillance
- Clean ships and harbor craft incentives
- Rule development



**Neighborhood Truck Traffic**

- Truck idling sweeps
- Clean truck incentives
- Public outreach
- Rule development



**Railyards**

- CARB regulations
- Clean equipment or infrastructure incentives



# Examples of Actions to Reduce Stationary Source Emissions



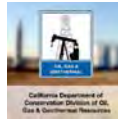
**Refineries**

- Mobile and fence-line air monitoring
- VOC leak detection & repair
- Refinery flaring notifications
- Rule development



**Oil Drilling and Production**

- Mobile air monitoring of oil wells
- Leak detection and repair
- Oil well notifications
- Rule development



**Auto Body Shops**

- Small Business Assistance Program outreach
- Collaborate with fire departments to inspect auto body shops
- Mobile air monitoring



## Example of Actions for Exposure Reduction



**Schools, Childcare Centers, Community Centers, Libraries and Public Housing Projects**



**Public Outreach and Community Organization Collaboration**

- Asthma management programs
- School-based programs
- Improve health messaging and conduct outreach

**Reduce exposure to air pollutants**

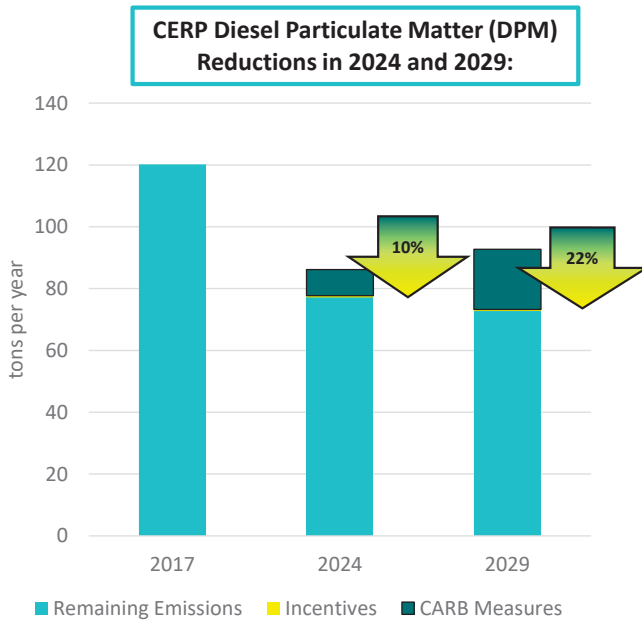
- Air filtration systems



# Emissions Reduction Targets

## Wilmington, Carson, West Long Beach Community

### SOUTH COAST AQMD AND CARB ACTIONS



Emissions <sup>a</sup>	NOx	SOx	VOC	DPM
2017 Emissions (tpy)	10,614	1,437	5,641	120
Projected 2024 Emissions Baseline (tpy)	8,819	1,659	5,306	86
Emission Reductions from CERP, by 2024 (tpy)	606	--	20.6	9
Emission Reductions from CERP, by 2024 <sup>b</sup> (%)	7	--	<1	10
Projected 2029 Emissions Baseline (tpy)	9,250	1,715	5,256	93
Emission Reductions from CERP, by 2030 (tpy)	3,207 <sup>c</sup>	11	64	20
Emission Reductions from CERP, by 2030 <sup>c</sup> (%)	35% <sup>d</sup>	<1%	<1%	22%

<sup>a</sup>Per CARB guidance, the emissions baseline was estimated for 2017, and milestone years 2024 and 2029. However, the emission reductions in this table target a 2030 completion date. While the baseline emissions were not calculated for 2030, staff expects the emissions to be similar to the 2029 estimates.

<sup>b</sup>Percent calculated based on 2024 emissions baseline

<sup>c</sup>Based on maximum NOx emission reductions that may be achieved from the adoption of Rule 1109.1 – Refinery Equipment

<sup>d</sup>Percent calculated based on 2029 emissions baseline

## Summary of CERP Process



# More Information on the CERPs



## Wilmington, Carson, West Long Beach:

<http://www.aqmd.gov/docs/default-source/Agendas/Governing-Board/2019/2019-sep6-025c.pdf>

## San Bernardino, Muscoy:

<http://www.aqmd.gov/docs/default-source/Agendas/Governing-Board/2019/2019-sep6-025a.pdf>



## East Los Angeles, Boyle Heights, West Commerce:

<http://www.aqmd.gov/docs/default-source/Agendas/Governing-Board/2019/2019-sep6-025b.pdf>





Southern California Association of Governments  
900 Wilshire Boulevard, Suite 1700, Los Angeles, California 90017  
February 6, 2020

To: Energy and Environment Committee (EEC)

EXECUTIVE DIRECTOR'S  
APPROVAL

From: Grieg Asher, Program Manager I, Sustainability, (213) 236-1869, asher@scag.ca.gov

Subject: SCAG Regional Greenprint

**RECOMMENDED ACTION:**

Information Only - No Action Required

**STRATEGIC PLAN:**

This item supports the following Strategic Plan Goal 2: Advance Southern California’s policy interests and planning priorities through regional, statewide, and national engagement and advocacy.

**EXECUTIVE SUMMARY:**

*SCAG has initiated the preparation of the Regional Greenprint, a strategic conservation tool and website to help users make better land use and transportation infrastructure decisions and support conservation investments based on the best available scientific data. Specifically, the Regional Greenprint will serve as an online mapping and reporting platform illuminating the multiple benefits of natural and agricultural lands through data related to key topics such as habitat connectivity, biodiversity, clean water, agriculture, flood risk reduction, and greenhouse gas sequestration. This presentation will provide an overview of the project and identify deliverables and milestones.*

**BACKGROUND:**

A “greenprint” is a strategic conservation plan or assessment tool that reveals the economic and social benefits that parks, open space, and working lands provide to communities. In 2018, SCAG staff and stakeholder members of the Natural & Farm Lands Conservation Working Group identified the opportunity to develop a Greenprint based on the need to balance regional growth with the multiple challenges affecting Southern California such as drought, climate change, and habitat loss; help better prioritize lands for mitigation that have regional conservation benefits; accommodate infrastructure development while protecting important natural resources; address the lack of consistent, regional data and tools; help guide conservation investments; and communicate the multiple benefits of natural resources, agricultural lands, and urban greening to people and communities. Developing a Regional Greenprint is included in the draft 2020 Connect SoCal Plan as a strategy for meeting natural and farm lands conservation goals.

**OUR MISSION**

*To foster innovative regional solutions that improve the lives of Southern Californians through inclusive collaboration, visionary planning, regional advocacy, information sharing, and promoting best practices.*

**OUR VISION**

*Southern California’s Catalyst for a Brighter Future*

**OUR CORE VALUES**

*Be Open | Lead by Example | Make an Impact | Be Courageous*

---

In December 2019, SCAG began working with The Nature Conservancy to help prepare the Regional Greenprint. The Nature Conservancy, along with their subconsultant GreenInfo Network, were selected because of their extensive experience developing greenprints and engaging stakeholders across the private, public, and non-profit sectors. In addition to developing the final Regional Greenprint, the Nature Conservancy will create a white paper advising SCAG on challenges and opportunities for developing a Regional Advanced Mitigation Program, which is envisioned by the draft Connect SoCal Plan as establishing and/or supplementing regional conservation and mitigation banks and/or programs to address impacts for projects that support reduction of per-capita vehicle miles traveled.

The Greenprint development process is expected to last two years. The kick-off meeting for the Regional Greenprint occurred on January 23<sup>rd</sup>, 2020. The first year will entail extensive, targeted outreach to stakeholders to gain insight on the tool's uses, main themes, and the best datasets to include. The second year will focus on developing and testing the tool, and a launch campaign.

**FISCAL IMPACT:**

This project is funded in SCAG's Fiscal Year 2019-2020 Overall Work Program under 20-065.4860.01.

**ATTACHMENT(S):**

1. PowerPoint Presentation - Regional Greenprint



# SCAG Regional Greenprint

Energy and Environment Committee

India Brookover  
Sustainability Department  
February 6<sup>th</sup>, 2020

[www.scag.ca.gov](http://www.scag.ca.gov)



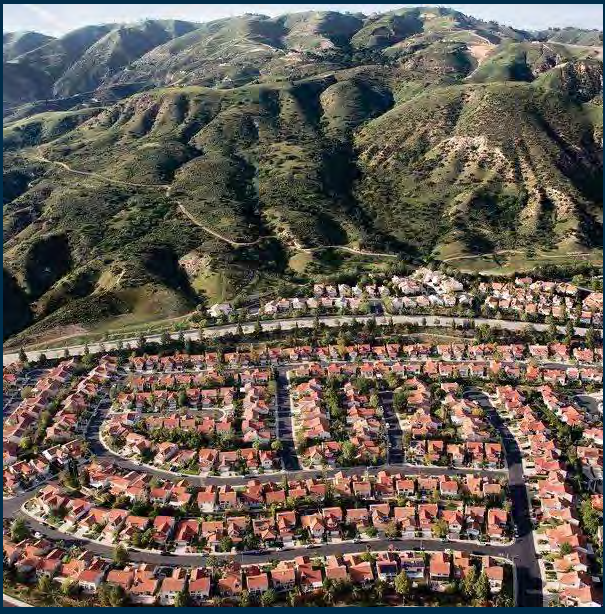
Attachment: PowerPoint Presentation - Regional Greenprint (SCAG Regional Greenprint Update)

## What is a Regional Greenprint?

A tool to help users make better land use and transportation infrastructure decisions and support conservation investments based on the best available scientific data.

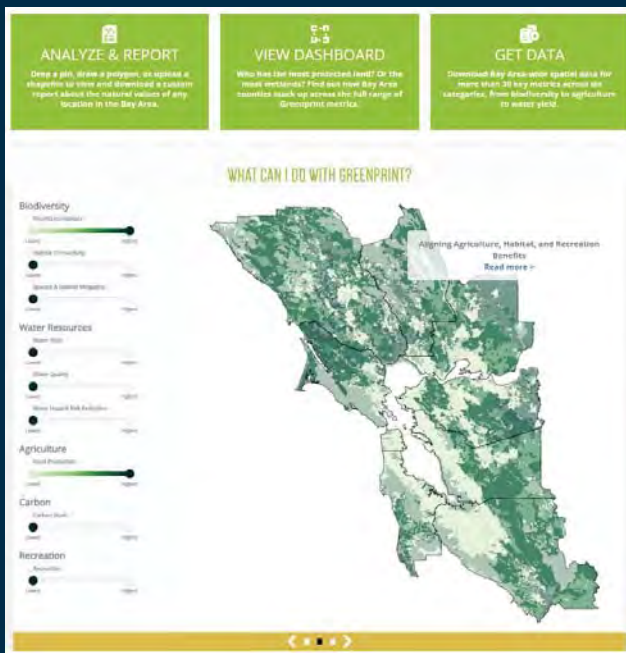


# Why do we need a Regional Greenprint?



- Balance growth with conservation
- Accommodate infrastructure while protecting natural resources
- Address the lack of consistent, regional data and tools
- Better prioritize lands for mitigation
- Resource for our member agencies and stakeholders

# What will it look like?



- Custom, web-based interactive map tool
- Compilation of regional data about conservation and growth
- Themes that organize information and map data layers organized by themes
- Specific to local values and needs, like location of natural hazards like fire, flood, and seismic zones



## Who will use the Greenprint?



- Local Governments
- Transportation agencies
- Infrastructure agencies
- Natural resource and regulatory agencies
- Developers
- Consultants
- Funders
- Land conservation organizations
- Community-based organizations
- Indigenous & tribal communities

## How can the Greenprint be used or implemented?



*Support better land use planning and decision making*

- Grow communities while avoiding agriculture and habitat
- Siting mitigation for freeway and rail alignments
- Identifying places that need green infrastructure or access to open space
- Establish ordinances like Ventura Habitat Connectivity and Wildlife Corridor Ordinance
- General plan updates and zoning changes
- Support regional advance mitigation planning (RAMP)

# What's next?



2020

2021

2022

## Scoping

- Kickoff Meeting
- Establish Steering Committee
- Develop Outreach Strategy
- Identify role/charter for stakeholders

## Strategic Outreach

- Connect with stakeholders
- Gain insights on tool uses and datasets
- Develop case studies
- Intersect with SCAG working groups
- Conduct rapid assessments

## Data Gathering & Tool Development

- Develop themes, goals, & objectives
- Develop reporting framework
- Gather datasets
- Wireframe/mockups
- Connect with science advisers

## Launch & Evaluation

- Outreach campaign
- RAMP study
- Website and Greenprint
- Funding and implementation
- API and database

# Greenprint Demo



[www.bayareagreenprint.org](http://www.bayareagreenprint.org)

Attachment: PowerPoint Presentation - Regional Greenprint (SCAG Regional Greenprint Update)



# Thank You

India Brookover  
Brookover@scag.ca.gov  
(213) 236-1919

[www.scag.ca.gov](http://www.scag.ca.gov)





Southern California Association of Governments  
900 Wilshire Boulevard, Suite 1700, Los Angeles, California 90017  
February 6, 2020

To: Energy and Environment Committee (EEC)

EXECUTIVE DIRECTOR'S  
APPROVAL

From: Grieg Asher, Program Manager I, Sustainability, (213) 236-1869, asher@scag.ca.gov

Subject: Clean Power Pathway Plan

**RECOMMENDED ACTION:**

Information Only – No Action Required

**STRATEGIC PLAN:**

This item supports the following Strategic Plan Goal 2: Advance Southern California’s policy interests and planning priorities through regional, statewide, and national engagement and advocacy.

**EXECUTIVE SUMMARY:**

*Southern California Edison (SCE) will be presenting on Pathway 2045, which examines the energy implications of California’s long term decarbonization goals on both the economy and the electric sector and sets a blueprint on how to achieve these goals. SCE will discuss their vision of a clean energy future, and opportunities for SCE and local governments to partner on environmental goals.*

**BACKGROUND:**

Joshua Torres of Southern California Edison (SCE) will be presenting on *Pathway 2045*, which examines the energy implications of California’s long term decarbonization goals on both the economy and the electric sector and sets a blueprint on how to achieve these goals.

*Pathway 2045* examines how clean energy and grid investments, required to meet 2045 goals, are an economic development opportunity for California. This analysis concludes that achieving carbon neutrality will require substantial decarbonization of all sectors of the economy and will require careful planning to keep energy safe, reliable and affordable. *Pathway 2045* finds that the California path to decarbonization can be achieved through powering 100% of retail sales with carbon-free electricity, electrifying transportation and buildings and using low-carbon fuels for technologies that are not viable for electrification. The study concludes that California residents will benefit from greatly reduced greenhouse gas emissions and local air quality pollutants.

**FISCAL IMPACT:**

**OUR MISSION**

*To foster innovative regional solutions that improve the lives of Southern Californians through inclusive collaboration, visionary planning, regional advocacy, information sharing, and promoting best practices.*

**OUR VISION**

*Southern California’s Catalyst for a Brighter Future*

**OUR CORE VALUES**

*Be Open | Lead by Example | Make an Impact | Be Courageous*





---

No Fiscal Impact. This is not a SCAG funded project.

**ATTACHMENT(S):**

1. PowerPoint Presentation - SCE Pathway 2045 EEC



# PATHWAY 2045

SCE's vision to achieve a carbon neutral future

Energy for What's Ahead®

Attachment: PowerPoint Presentation - SCE Pathway 2045 EEC (Clean Power Pathway Plan)

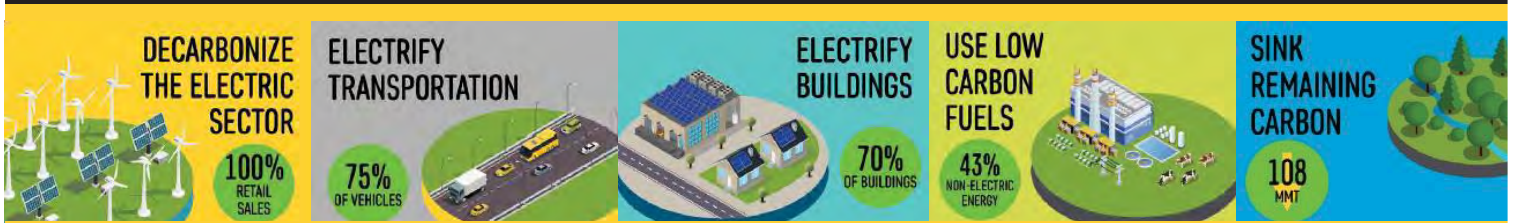
IN THE  
YEAR  
2045

- People will think of gas appliances as dated, like wood stoves in cabins are today
- Gas pumps will be tucked in the corner while electric charging stations are front and center
- Coal will be a thing kids learn about in museums

Energy for What's Ahead®

# HOW IT'S DONE: SCE'S VISION

Carbon neutrality is achieved through deep **decarbonization** of **electricity**, transportation and building **electrification**, and the use of **low-carbon fuels**



Energy for What's Ahead<sup>®</sup>

## CUSTOMER BENEFITS FOR ALL

- Cleaner air & improved health outcomes
- Savings for the average customer
- New economic opportunities
- Clean energy future

Energy for What's Ahead<sup>®</sup>



# PARTNERING WITH **LOCAL GOVERNMENTS**

- Ongoing two-way dialogue
- EV-readiness planning
- Energy reach codes
- EV charging infrastructure
- Incentives for clean energy technologies

Energy for What's Ahead®