



ONE WATER, MANY WAYS TO SAVE

Helping Californians Respond to **Historic Drought**

Southern California Association of Governments
Energy & Environment Committee

July 7, 2022

Presentation **Overview**

- Introduction to Metropolitan
- Current Drought Conditions & State Regulations
- Conservation Efforts & Assistance

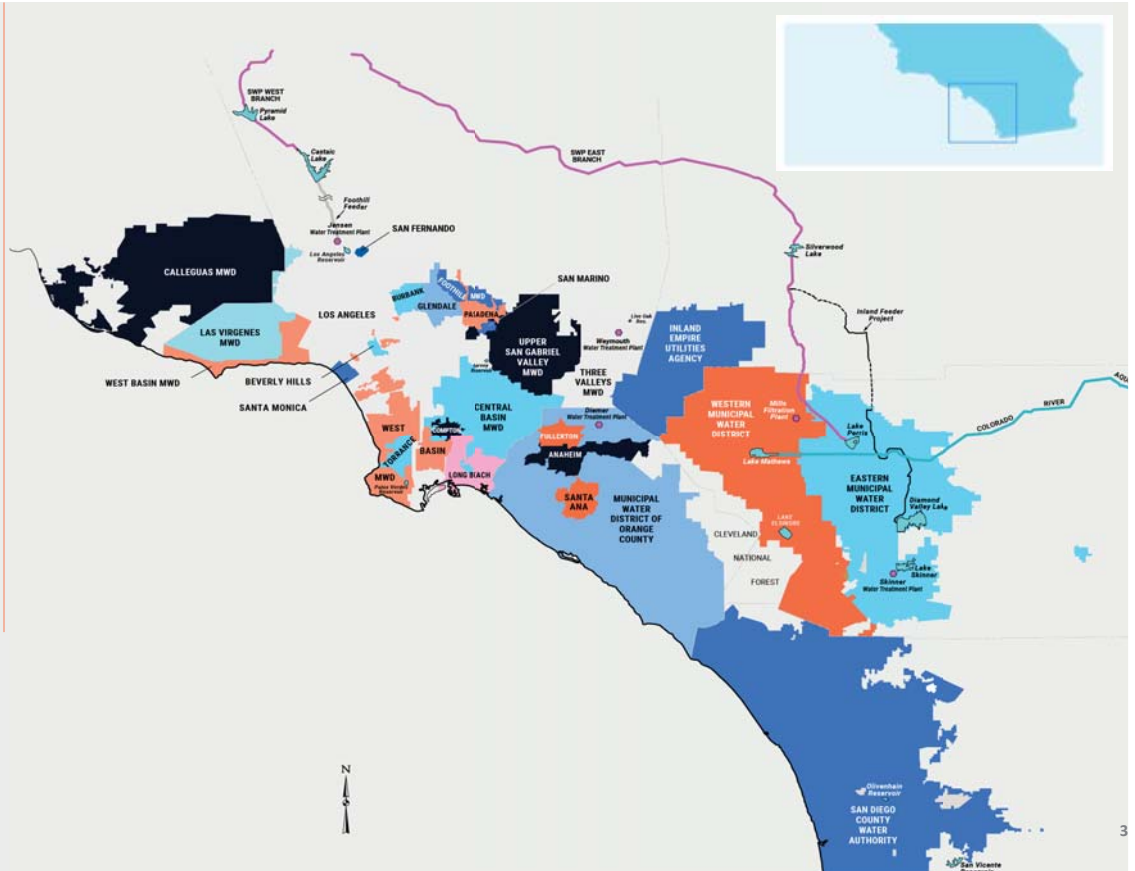
About Metropolitan

Nation's **largest** wholesale water provider

5,200 square miles throughout 6 counties, **19 million people** through **26 public member water agencies**

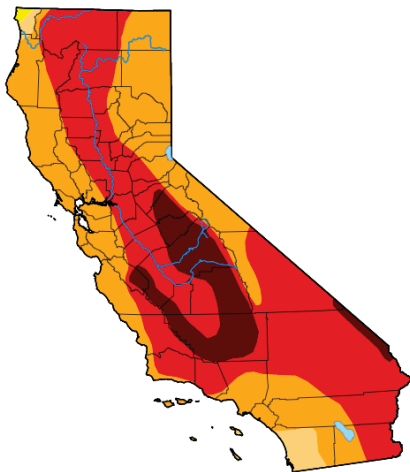
Supports **\$1 trillion** regional economy

Imports water from Northern Sierra and the Colorado River, invests in **local projects & conservation**



Record Breaking Drought Continues: Three Driest Years on Record in California

California



Map released: Thurs. June 23, 2022

Data valid: June 21, 2022 at 8 a.m. EDT

Intensity

- None
- D0 (Abnormally Dry)
- D1 (Moderate Drought)
- D2 (Severe Drought)
- D3 (Extreme Drought)
- D4 (Exceptional Drought)
- No Data

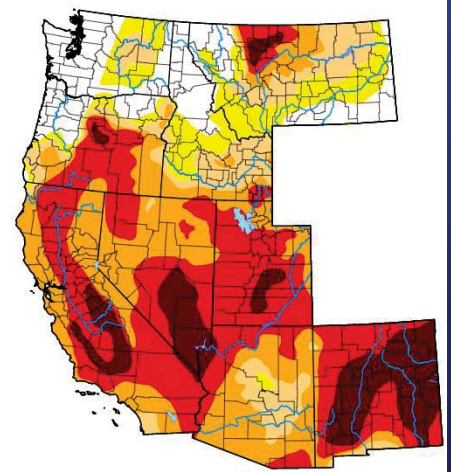
Authors

United States and Puerto Rico Author(s):
Adam Hartman, NOAA/NWS/NCEP/CPC

Pacific Islands and Virgin Islands Author(s):
Denise Gutzmer, National Drought Mitigation Center

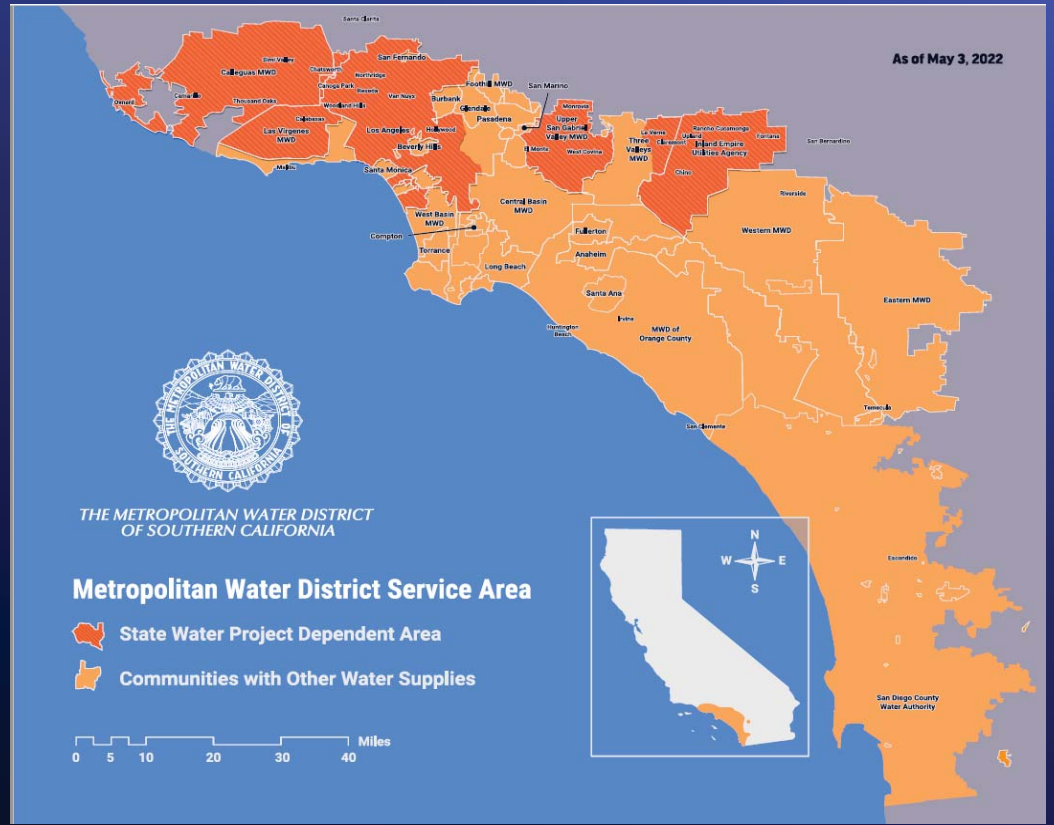
The Drought Monitor focuses on broad-scale conditions. Local conditions may vary. See accompanying text summary for forecast statements.

West



Water Shortage Emergency Impacted SWP Areas

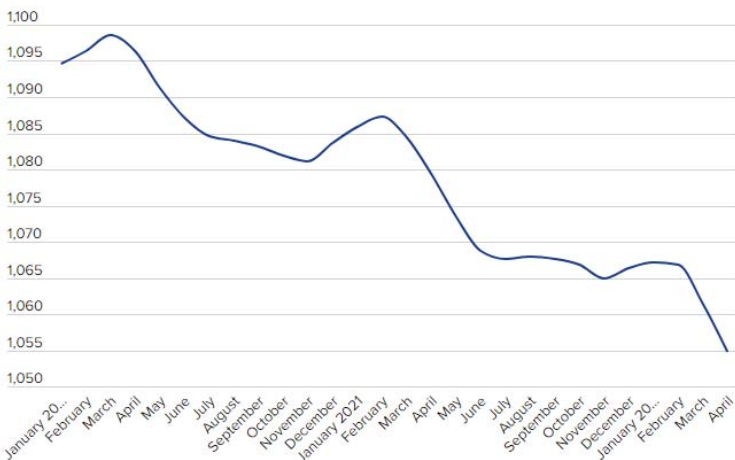
These areas either restricted to one-day/week watering, or equivalent reductions



First Ever Shortage Declared on the Colorado River

Lake Mead water levels

January 2020 to April 2022
in feet



Source: Bureau of Reclamation



State Water Resources Control Board (SWRCB)

Emergency Regulations

Executive Order N-7-22

Issued March 28, 2022

Adopted May 24, 2022

SWRCB emergency regulations **in effect June 1, 2022**, for urban water suppliers

- Suppliers enact Level 2 of **Water Shortage Contingency Plans**
- Ban potable water irrigation of **non-functional or decorative turf**
 - Focused on Commercial, Industrial and Institutional (CII)
 - Exceptions to ensure health of trees (and other perennial non-turf plantings)



Some Typical Stage/Level 2 Restrictions

- Outdoor landscape irrigation is limited to two days per week, morning/evening only, no water during/after rain event
- Vehicle washing only with hose & shutoff nozzle
- Use a broom on driveways or sidewalks
- Restaurants to serve water on request
- Fix leaks in a timely manner



SWRCB Emergency Regulations for Urban Water Suppliers

Turf Regulation Focused on CII Sector

- Excludes park, sports fields, and other turf used for recreation or community events
- Allows irrigation of turf on the same valve as trees
- Does not apply to recycled water
- Infractions punishable by a fine of up to \$500 for each day in violation

Metropolitan's Conservation Efforts

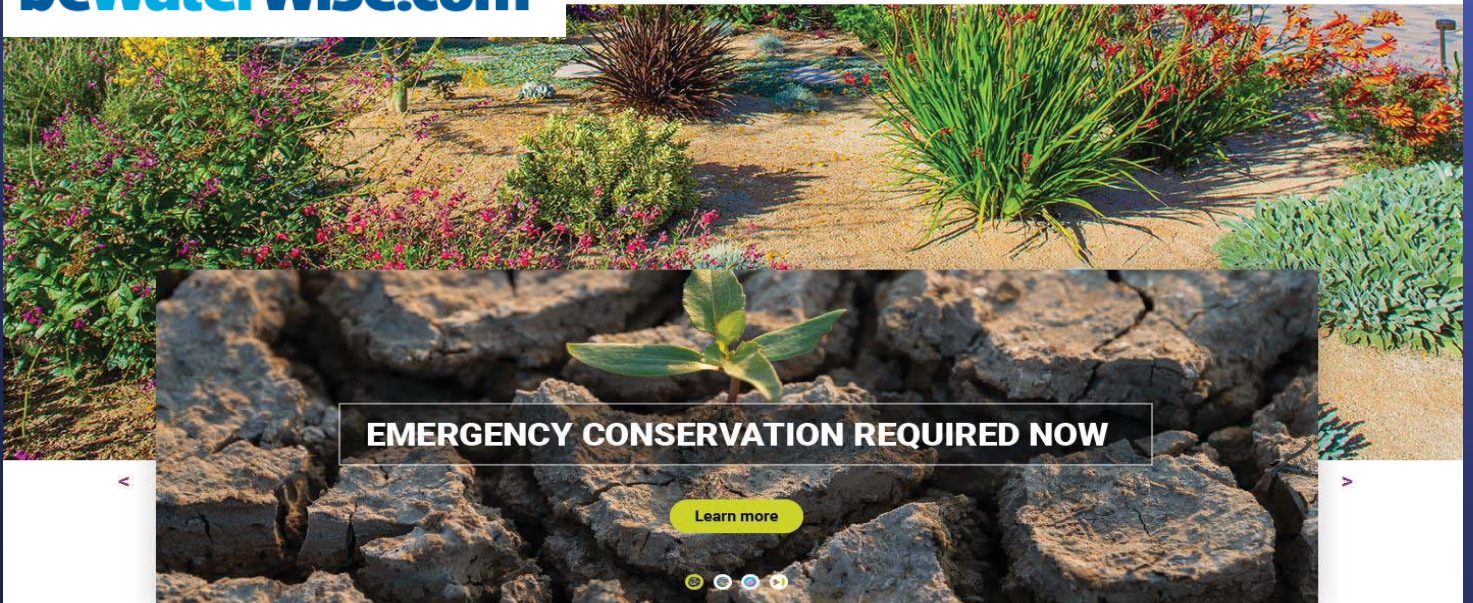
bewaterwise.com[®]

bewaterwise.com[®]

Español

中文

MENU



California is in a drought emergency. In Southern California, we don't have enough water in some parts of the region to meet normal demands. Every drop we save today counts. Metropolitan Water District and local water districts are taking extraordinary efforts to ensure we have what we need in the coming months. Now is the time to dramatically reduce your water use, and we're here to help.

Rebates

Residential Rebates
Commercial Rebates
Landscape Irrigation Survey
Program Information
Turf Replacement Program
Flow Monitor Pilot Program

Materials

Rebate and Incentive Program Fact Sheets
Water-Saving Tips
How-To Videos
California Friendly® Gardening Materials
How to Choose Your Water-Efficient Devices
Watering Tools: Index, Calculator and Widget

Classes

Residential California Friendly® Landscape Training
Residential Turf Replacement Class
Find Classes in Your Area

Grants & Incentives

Innovative Conservation Program
Water Savings Incentive Program
On-Site Retrofit Program

Garden

Guides and Inspiration
How-To Videos
California Native Plants
Landscape & Seasonal Tips
Local Nurseries

Ad Campaign

Conservation Toolkit
This Is How We Save Water
Wasting Water Is
Water Zombies

**Residential
Rebates.**

Indoor & Outdoor Devices

Water-efficient device rebates include:

- Premium high-efficiency toilets
- High-efficiency clothes washers
- Flow monitor/leak detection devices
- Rotating sprinkler nozzles
- Rain barrels and cisterns
- Weather-based irrigation controllers
- Soil moisture sensor systems



Commercial Rebates.

Rebates available for:

- Turf replacement
- High-efficiency plumbing fixtures
- HVAC equipment
- Commercial kitchen & food equipment

Commercial Turf Replacement Program

- Approximately **96 million square feet** of commercial turf removed since July 1990
- Current rebate \$2/square foot **for all commercial sites**; 50,000 sf cap
- Rebate for **public agency sites** \$3/sf; 200,000 sf cap

Metropolitan's Activities

Metropolitan offers
technical assistance for
these projects

Commercial Turf Removal is Non-Functional Turf Removal

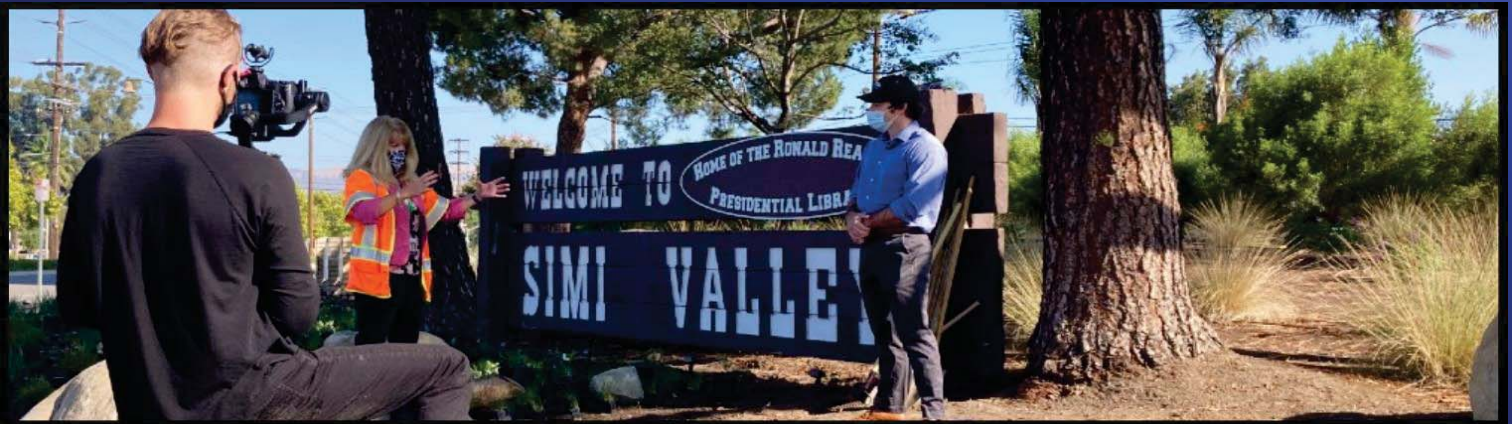


Non-Functional Turf Removal

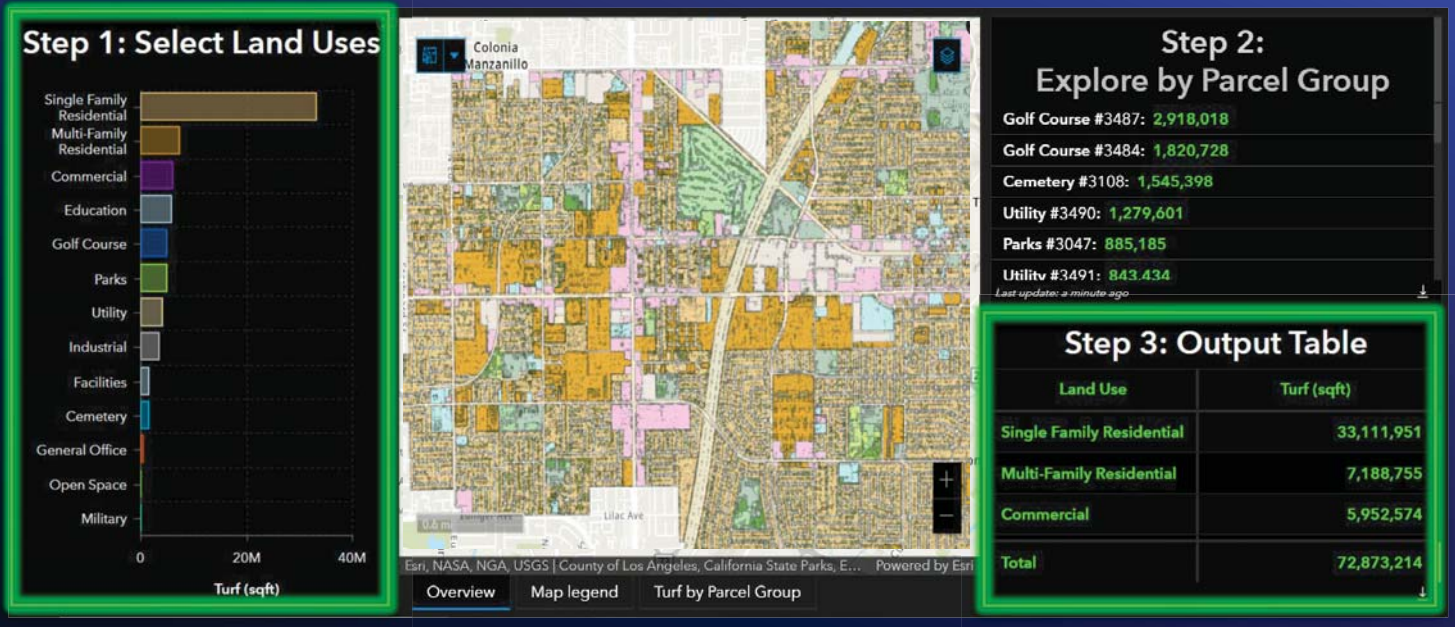
Non-Functional Turf Removal



City of Simi Valley Welcome Corner



Developing an Interactive Turf Measurement Dashboard for Member Agencies



Categories can be isolated to understand the magnitude of the issue.

Landscape Classes
& Resources

Classes for Landscape Professionals & City Staff

Water Efficient Landscape Dual Certification Program



Contractors placed on www.bewaterwise.com upon passing the course

Free class! \$50 deposit
Returned on completion of course
Next session: Fall 2022



Model Water Efficient Landscape Ordinance Training

Classes coming Fall 2022
Sign up www.SoCalGas.com

MWEL: **State regulation designed to prevent water waste on irrigated landscapes**

Typically triggered by building permits for irrigation systems, building additions, pools

Residential Landscape Classes

Water Efficient Landscaping Classes

Sign up for a class and learn about water-saving rebates at: Bewaterwise.com/classes

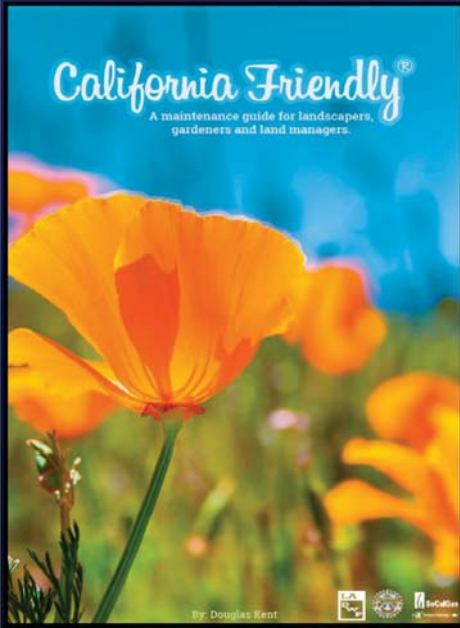
bewaterwise.com

Schedule of Classes

Topics include:

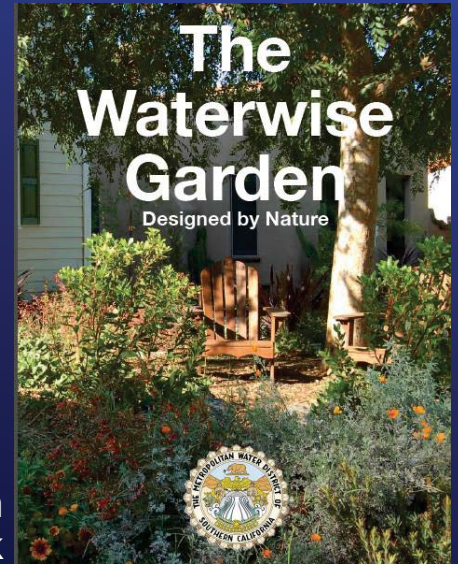
- Turf Replacement
- Garden Design
- Rainwater Capture
- Irrigation Basics
- Drip Irrigation Maintenance & Troubleshooting
- Deciphering Your Irrigation Controller

California Friendly Landscape Maintenance



Maintenance Guidebook

- Maintenance guide for landscapers, gardeners, and land managers



The WaterWise Garden Guidebook

Both available as PDF for free: <http://bewaterwise.com>

Questions.



Helping Californians
Respond to **Historic Drought**

Elise M. Goldman
Resource Specialist
egoldman@mwdh2o.com