



TRANSPORTATION SAFETY REGIONAL EXISTING CONDITIONS

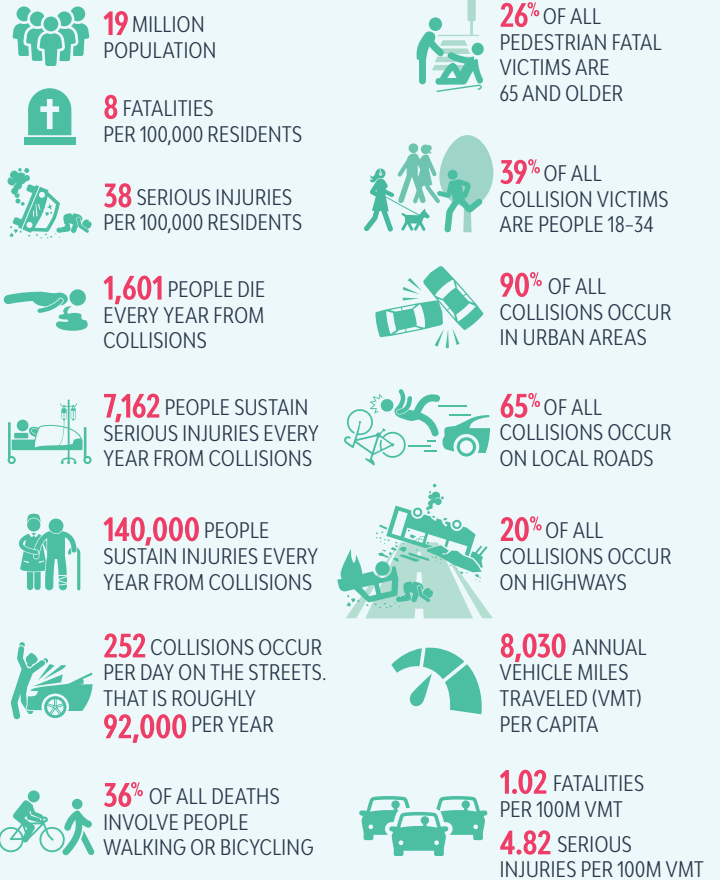
S O U T H E R N C A L I F O R N I A A S S O C I A T I O N O F G O V E R N M E N T S

Recognizing the transportation safety challenges confronting the region, in 2021, SCAG adopted a resolution affirming its regional leadership role and commitment to advancing transportation safety, and adopting a Regional Safety Policy that:

- Endorses Toward Zero Deaths (TZD) as part of a comprehensive effort to strive to achieve zero transportation-related fatalities and serious injuries in the SCAG region by 2050, if not sooner;
- Motivates data driven approaches, including High Injury Networks and safety modeling, to inform safety policy and planning and the strategic use of available funds and resources;
- Promotes equity in regional safety policies and plans by considering and analyzing impacts on Priority Equity Communities, and protecting vulnerable roadway users, such as pedestrians and bicyclists, older adults and youth;
- Engages regional stakeholders in transportation safety policy and plan development, implementation, and evaluation, with the goal of achieving alignment with TZD; and
- Provides leadership at the state and regional levels to promote safety, including supporting work on statewide efforts (e.g., Strategic Highway Safety Plan) and legislation that furthers TZD.

We depend on data to help us make better transportation decisions that result in fewer fatalities and serious injuries. We want to find solutions to make the region safer for everyone. A first step is understanding our existing conditions. SCAG completed an analysis of the region's existing conditions and some of the key facts are highlighted here.

SCAG Region BY THE NUMBERS



Why are collisions occurring?



HIT BY A VEHICLE TRAVELING AT 25 MPH



HIT BY A VEHICLE TRAVELING AT 40 MPH



Ventura County **BY THE NUMBERS**



826,000
POPULATION



6 FATALITIES
PER 100,000 RESIDENTS



53 SERIOUS INJURIES
PER 100,000 RESIDENTS



54 PEOPLE DIE EVERY
YEAR FROM COLLISIONS



438 PEOPLE SUSTAIN
SERIOUS INJURIES EVERY
YEAR FROM COLLISIONS



5,000 PEOPLE
SUSTAIN INJURIES EVERY
YEAR FROM COLLISIONS



10 COLLISIONS OCCUR PER
DAY ON THE STREETS. THAT IS
ROUGHLY **3,500** PER YEAR



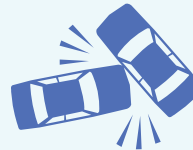
24% OF ALL DEATHS
INVOLVE PEOPLE WALKING
OR BICYCLING



40% OF ALL
PEDESTRIAN FATAL VICTIMS
ARE 65 AND OLDER



54% OF ALL
COLLISION VICTIMS
ARE PEOPLE 18-34



92% OF ALL COLLISIONS
OCCUR IN URBAN AREAS



71% OF ALL COLLISIONS
OCCUR ON LOCAL ROADS



28% OF ALL COLLISIONS
OCCUR ON HIGHWAYS



7,570 ANNUAL
VEHICLE MILES TRAVELED
(VMT) PER CAPITA



0.7 FATALITIES
PER 100M VMT
7 SERIOUS INJURIES
PER 100M VMT

Source: Transportation Injury Mapping System (TIMS) 2023 Provisional Data, Statewide Integrated Records System (SWITRS), and California Safety PM Target Setting Supporting Tool

HAVE ADDITIONAL QUESTIONS?

Review the Transportation Safety Regional Existing Conditions report at scag.ca.gov/transportation-safety or email Michael Gainor at gainor@scag.ca.gov.

