



PANEL 3

Evolving Diversity in Southern California Neighborhoods



Evolving Diversity in Southern California Neighborhoods

Sandhya Kambhampati – MODERATOR

Data and Graphics Reporter, Los Angeles Times

David Moctezuma

Doctoral Researcher, USC Sol Price School of Public Policy

Annette Kim

*Associate Professor and Director, Spatial Analysis Lab,
USC Sol Price School of Public Policy*



EVOLVING DIVERSITY IN SOUTHERN CALIFORNIA NEIGHBORHOODS


Sandhya Kambhampati – MODERATOR

Data and Graphics Reporter, Los Angeles Times


CALIFORNIA

How Los Angeles County became home to the biggest AAPI communities in the country





Los Angeles County is home to more Asian Americans than any other county in the United States. California is home to roughly 6 million Asians and Pacific Islanders, the most in the country, with the seven Southern California counties accounting for half of the state's AAPI population. And Asian Americans are the fastest growing population in the nation. To understand the Asian and Pacific Islander diaspora in Southern California, the Los Angeles Times analyzed 40 years of data from the Census Bureau.

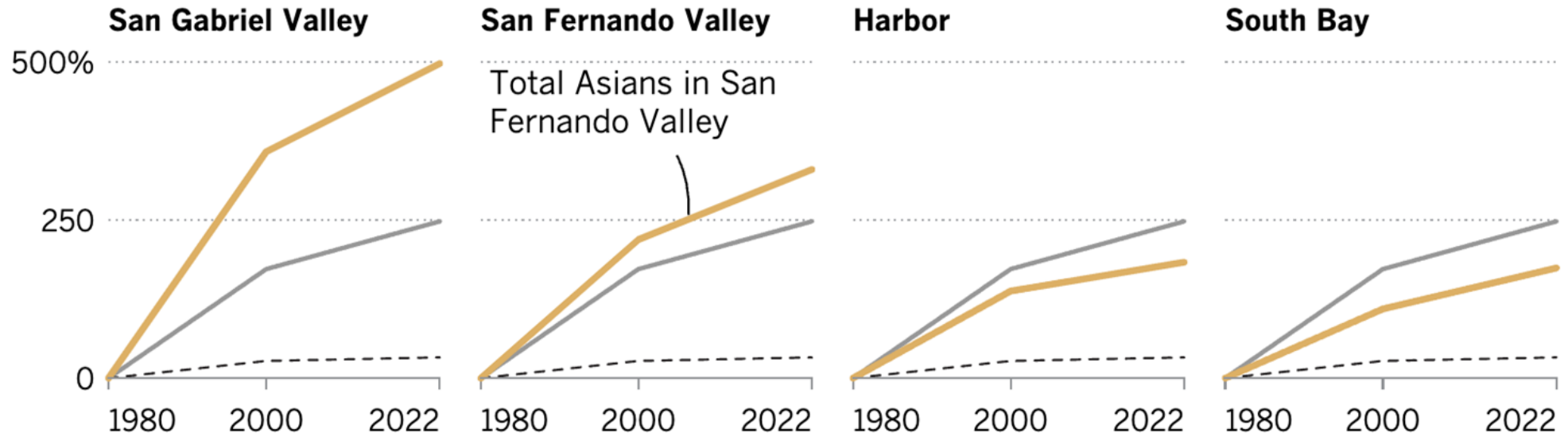


For decades, census forms treated Asians as a monolith and did not include categories for each race group. Coming from dozens of communities, most of them associated with the largest continent in the world, nearly a million Asians and Pacific Islanders in Los Angeles County in 1980 were recorded only as “Other.” [More than a quarter](#) of the Native Hawaiian and Pacific Islander population in Los Angeles still report belonging to a group not listed on the latest census forms. The allocation of federal resources and funding depends on a complete enumeration of AAPI communities. There are more than 25 Asian countries and five countries in the Pacific Islander community acknowledged by federal statistics.

Asians in L.A. County have outpaced overall population growth

Change in Asian population from 1980 to 2022

— All Asians in L.A. County -- All of L.A.*

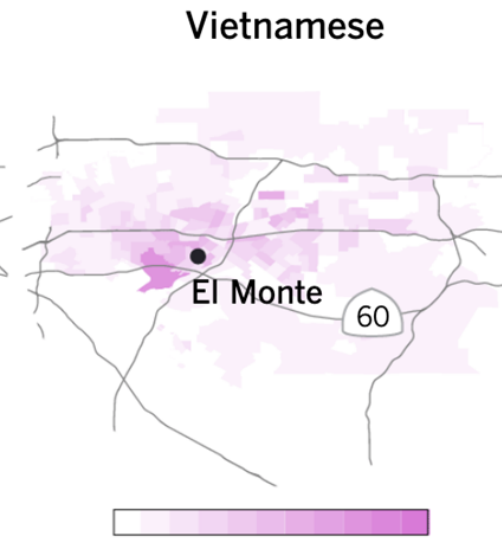
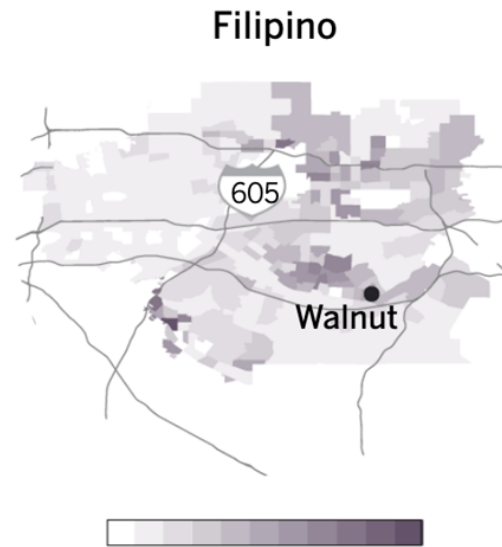
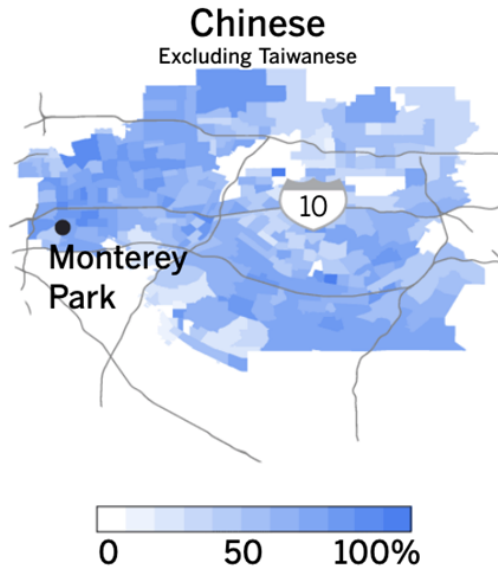


*Total population growth including all races in the county
Times analysis of U.S. Census data. See methodology for details.

Of the 10 Los Angeles County neighborhoods with the highest Asian populations in 1980, two were in the San Gabriel Valley (Alhambra and Monterey Park). By 2022, the number of San Gabriel Valley places in the top-ranking Asian neighborhoods had tripled.

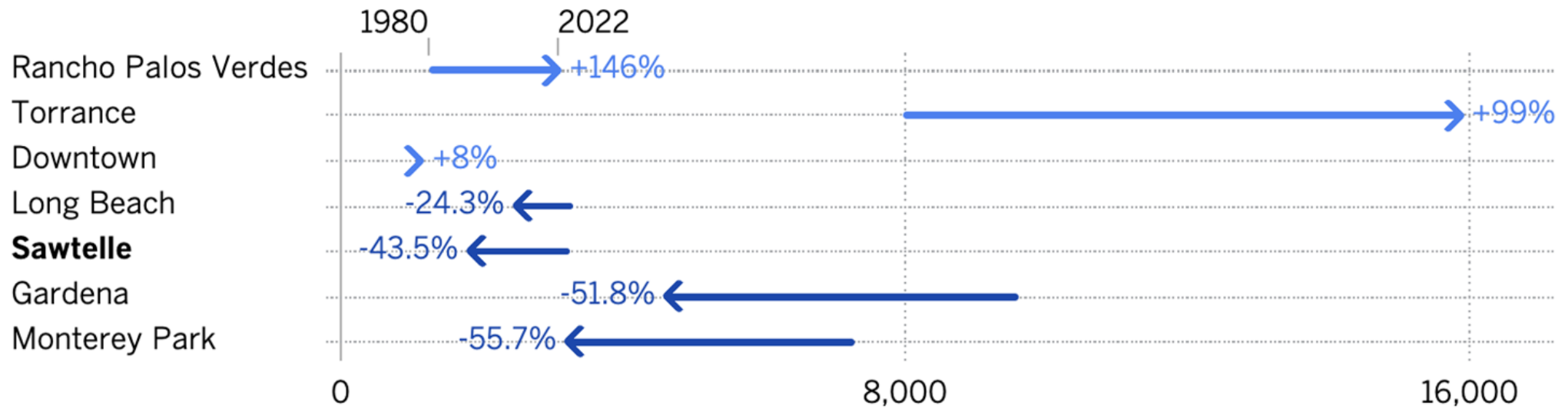
San Gabriel Valley: L.A.'s first Asian American suburb

Share of overall Asian population



Sawtelle was once a hub of the Japanese community

Japanese population from 1980 to 2022

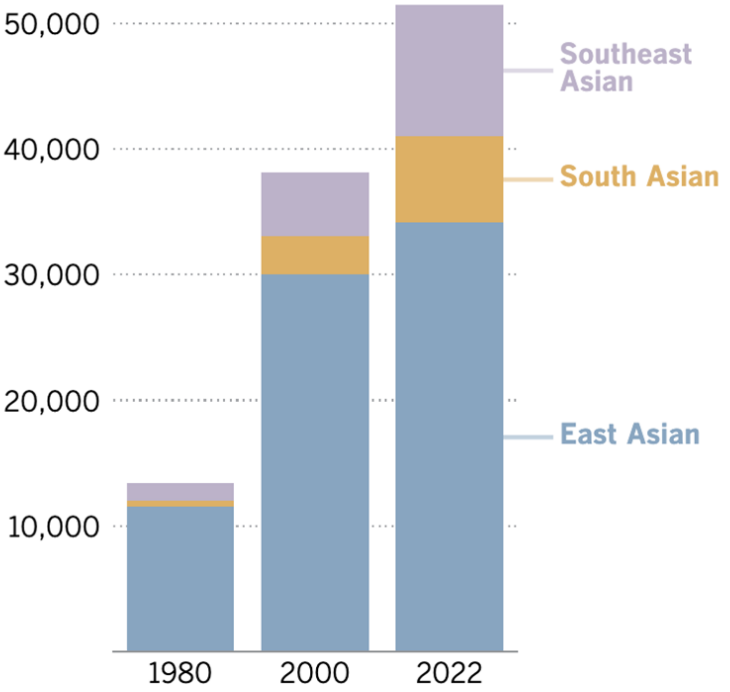


The highest number of South Asian people live in the South Bay, in Torrance. It's also home to the most East Asian people in the county.

In the South Bay, Asian communities are concentrated in Torrance, Gardena, Rancho Palos Verdes and Redondo Beach. Torrance alone is home to more than 15,000 Japanese and 11,000 Koreans. More than 13,000 Indian people live in the area, mostly in Torrance and Redondo Beach. Indians make up the majority of the South Asian population in Los Angeles overall, followed by Pakistani, Bangladeshi and Sri Lankan people.

The San Fernando Valley is home to a quarter of the South Asian population with about 125 people per square mile. Beyond Los Angeles County, San Diego is home to more than 34,000 Indians and Irvine is home to more than 22,000.

Torrance's East Asian population tripled since 1980



LOS ANGELES TIMES

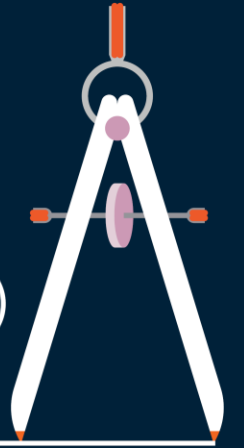


Qs?

sandhya@latimes.com

2024 SOUTHERN CALIFORNIA DEMOGRAPHIC WORKSHOP

NAVIGATING THE NEW GROWTH REALITY



scag.ca.gov/demographics



USC Price

Sol Price School of Public Policy

Neighborhood Change in Los Angeles Communities of Color, 2010 to 2020 census

David Flores Moctezuma

Ph.D. Candidate, USC Population Dynamics Research Group

*Drawing on analysis by Dr. Hyojung Lee, Seoul National University, in a four-part study for the Center for California Real Estate, **Who Gets to Call California Home?** Authors Dowell Myers, PI, Hyojung Lee, Seongmoon Cho, and David Flores Moctezuma*





Research Questions

1. How have slowly growing communities of color in the Los Angeles area shifted their neighborhood concentrations between the censuses of 2010 and 2020?
2. What other groups have been the most frequent replacements when existing communities decrease their concentrations in a neighborhood?



Demographic Shifts in the Los Angeles MSA



Los Angeles Metropolitan Statistical Area

- The largest metro area in California affords the best venue for witnessing how neighborhood demographics change over time
- The Los Angeles MSA is slowly growing, a total population gain of 2.9% over the decade, none of its ethnoracial groups are changing rapidly
- Local changes we identify result, not from large increases of any particular groups in the region but from a re-sorting of the existing number of residents as they adjust their housing needs
- All of the groups occupy significant positions in the urban area, often overlapping with one another in particular neighborhoods

Demographic Shifts in the Los Angeles Area

Los Angeles Metro	2000	2010	2020	2010-2020
White Non-Hispanic	4,418	4,057	3,762	-295
African American	944	859	810	-49
Asian and Pacific Islanders	1,540	1,889	2,202	313
Hispanic or Latino	5,118	5,701	5,892	191
Other	345	323	536	213



Los Angeles Metro	2000	2010	2020	2010-2020
White Non-Hispanic	35.7%	31.6%	28.5%	-3.1
African American	7.6%	6.7%	6.1%	-0.6
Asian and Pacific Islanders	12.5%	14.7%	16.7%	2.0
Hispanic or Latino	41.4%	44.4%	44.6%	0.2
Other	2.8%	2.5%	4.1%	1.6

Population Share (%)

Demographic Shifts within <15 miles of the City Center

< 15-Mile from City Hall	2000	2010	2020	2010-2020
White Non-Hispanic	1,459	1,403	1,402	0
African American	692	599	538	-60
Asian and Pacific Islanders	673	778	837	59
Hispanic or Latino	2,868	3,007	2,989	-18
Other	159	132	221	89



Population (in 1000's)	City Hall	2000	2010	2020	2010-2020
	White Non-Hispanic	24.9%	23.7%	23.4%	-0.3
	African American	11.8%	10.1%	9.0%	-1.1
	Asian and Pacific Islanders	11.5%	13.1%	14.0%	0.8
	Hispanic or Latino	49.0%	50.8%	49.9%	-0.9
	Other	2.7%	2.2%	3.7%	1.5

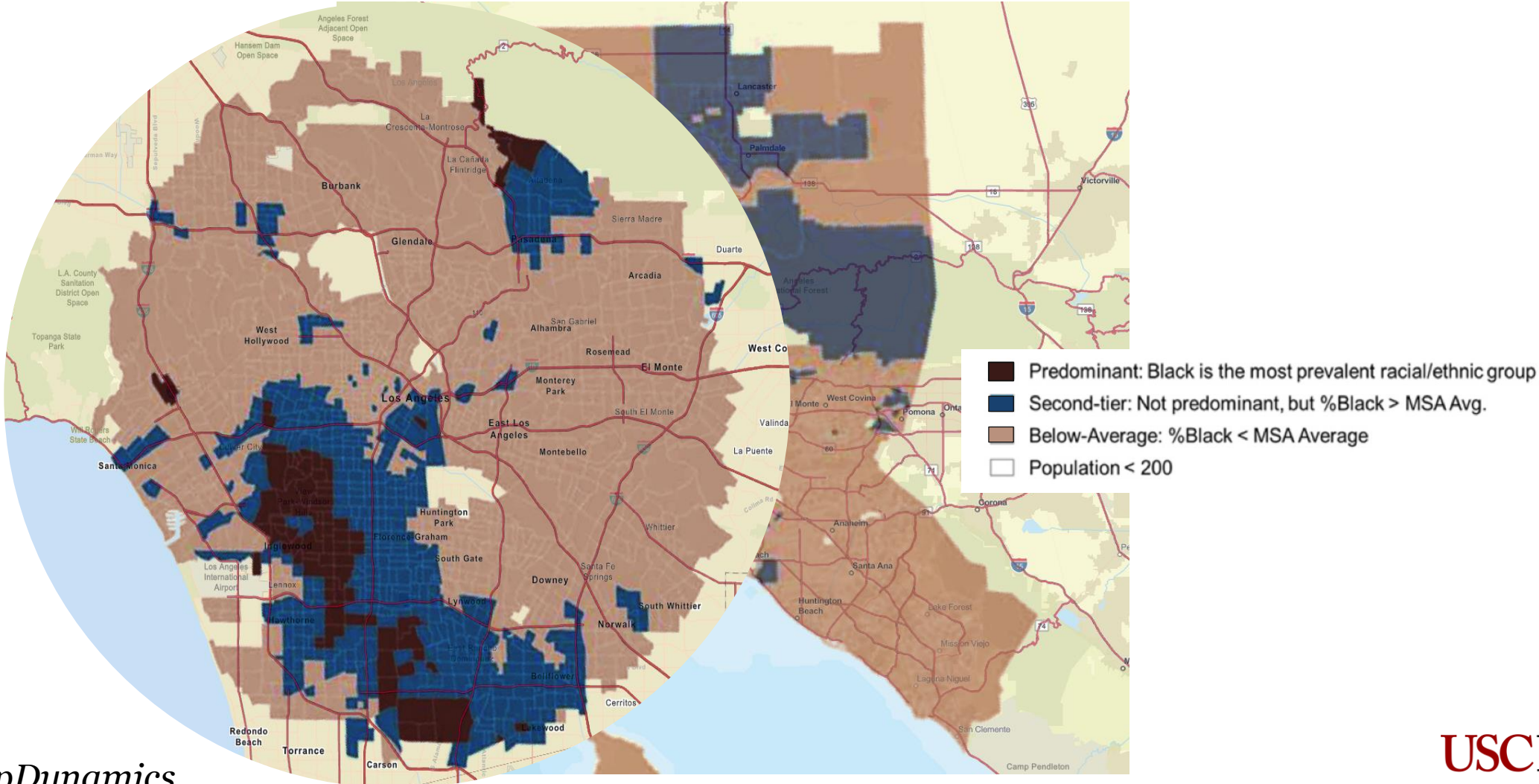
Racial/Ethnic Concentration in Clusters of Census Tracts

1. Predominant Neighborhoods = Where a group has a plurality or majority
2. Second-tier Neighborhoods = Above average prevalence
3. Below-average Neighborhoods = Low prevalence

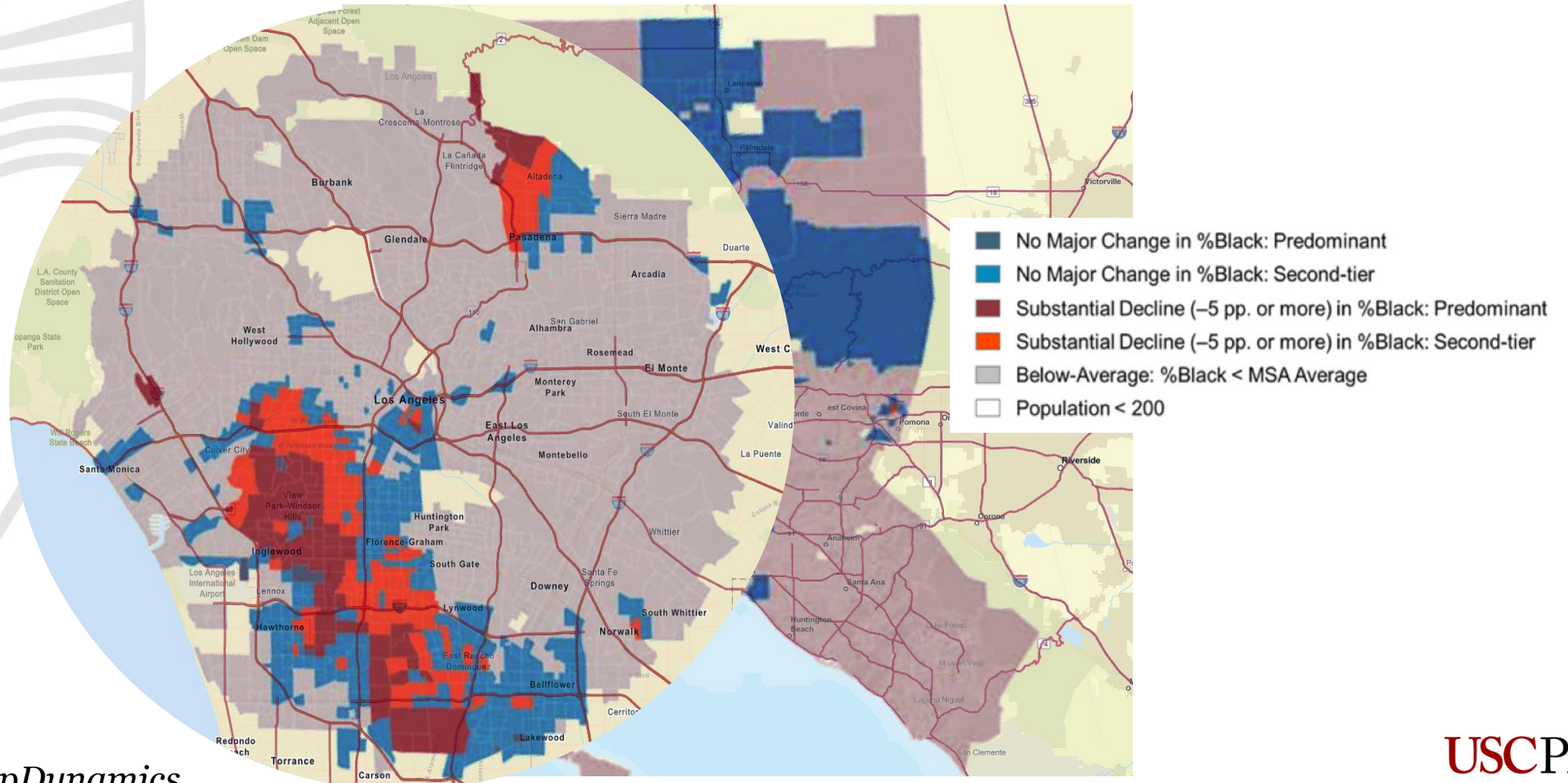


Neighborhood Change in African American Communities

African American Communities in the Los Angeles Area in 2010



Communities with Substantial Population Share Decline in the Los Angeles MSA in 2010-2020



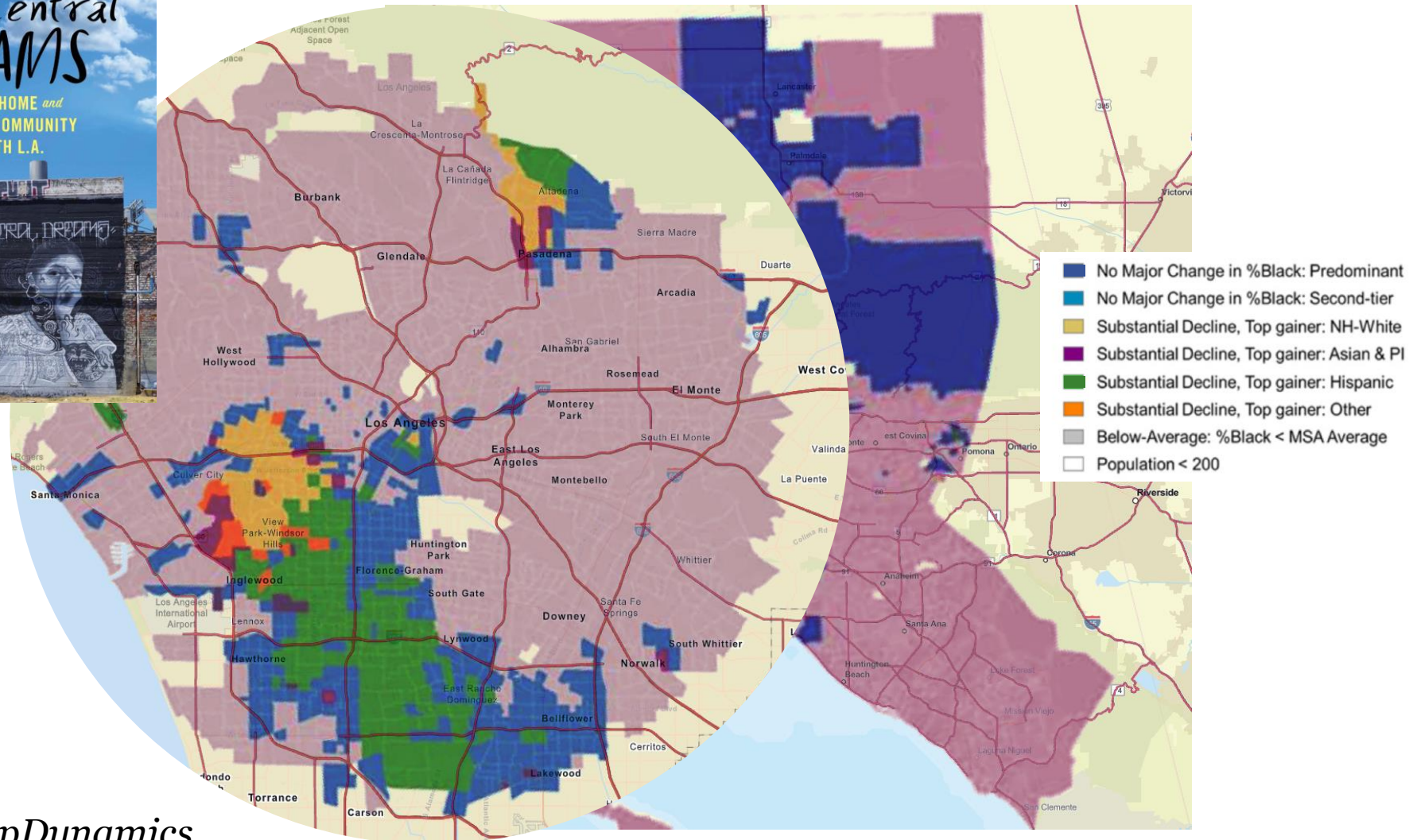
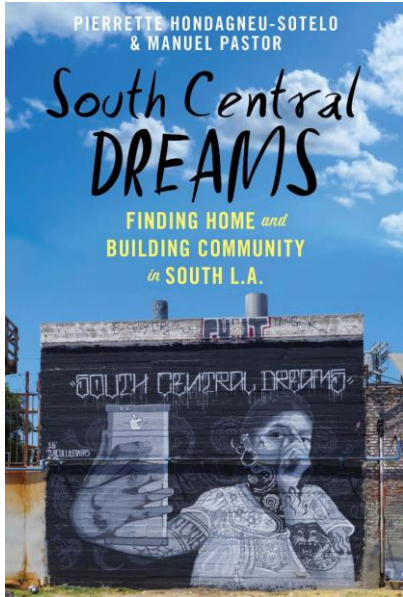


Who are the top gainers?

2. What other groups have been the most frequent replacements when existing communities decrease their concentrations in a neighborhood?

Who moved in?

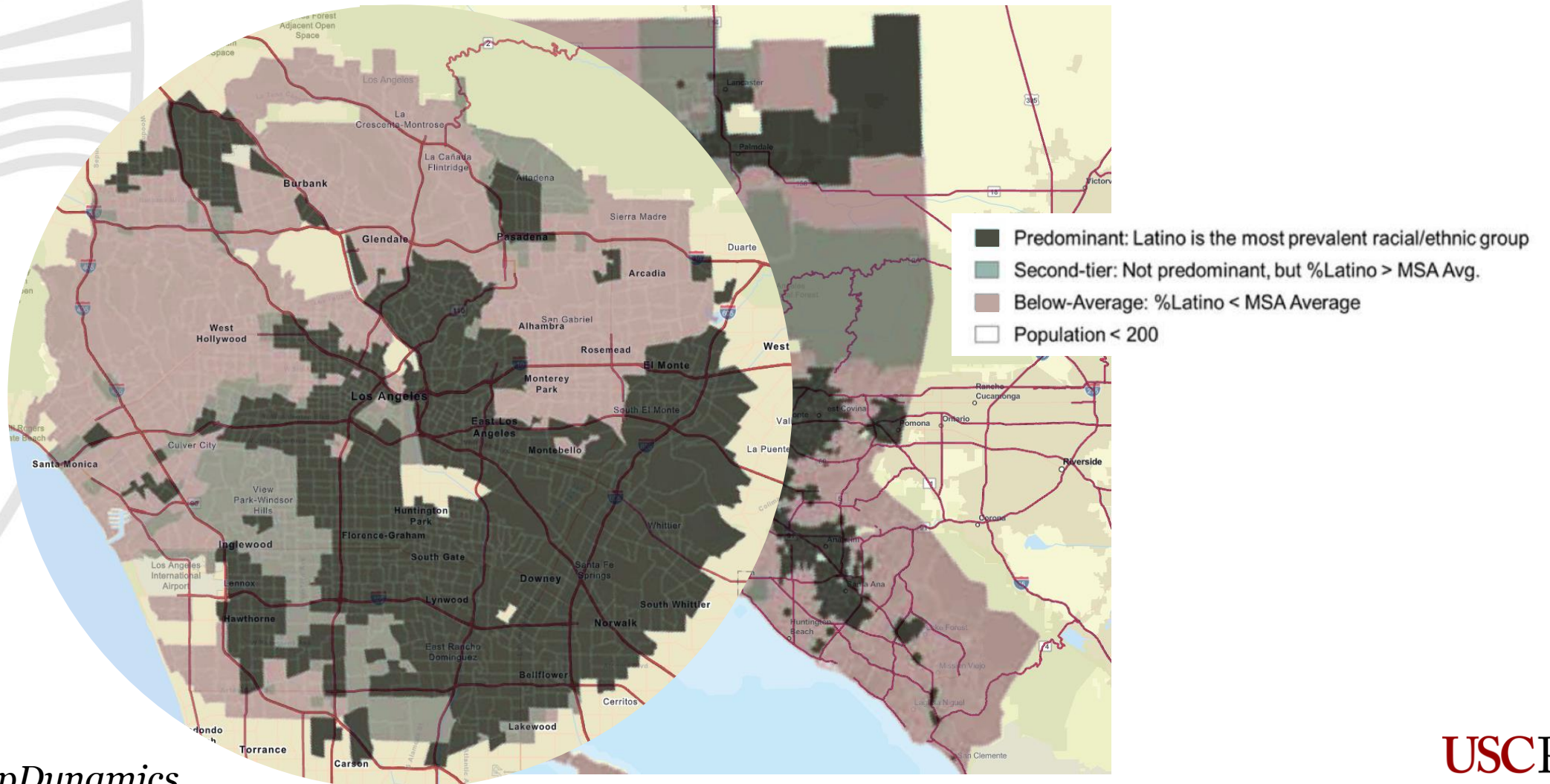
Which Groups Gained Where African Americans Declined?



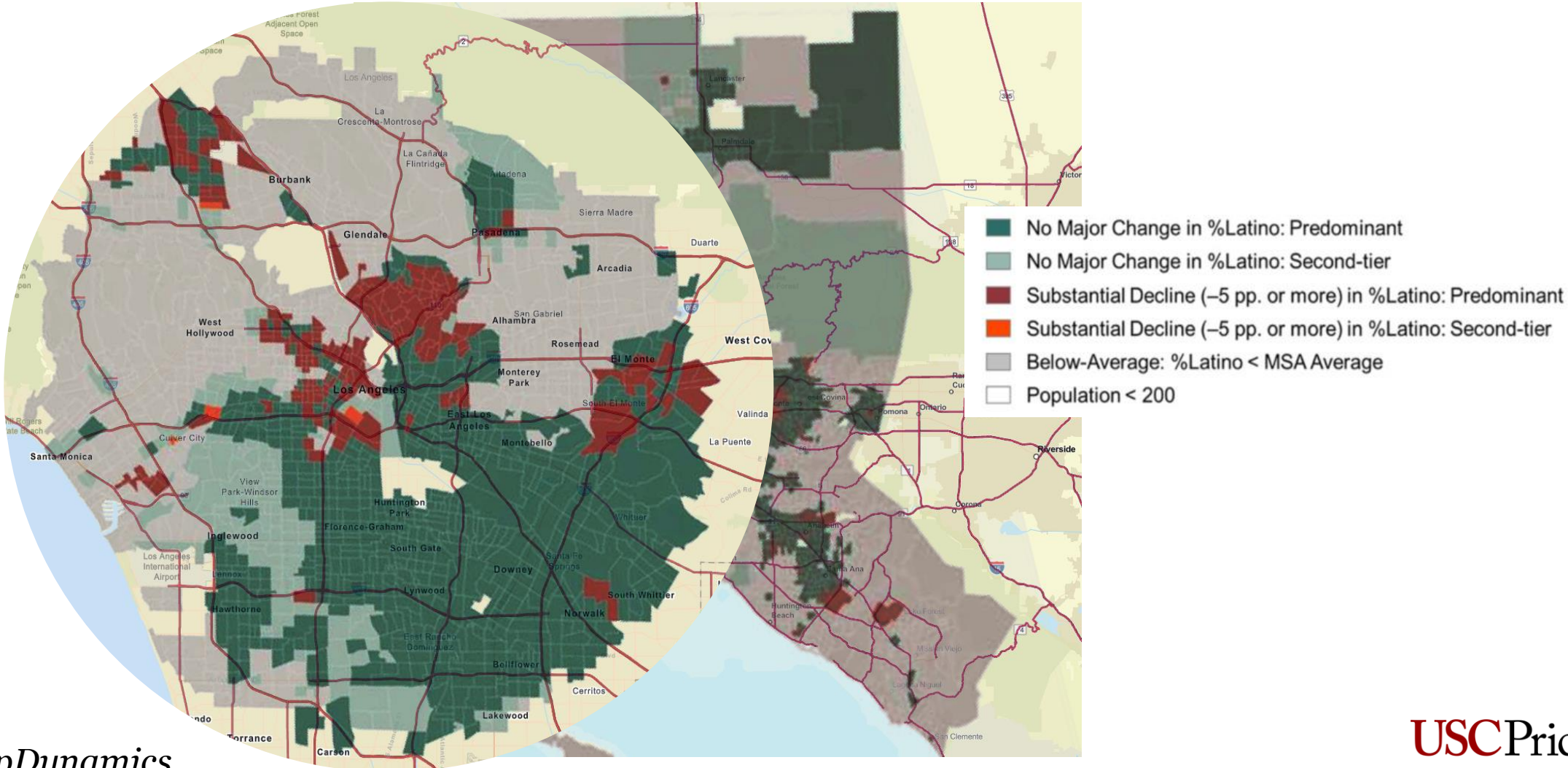


Neighborhood Change in Hispanic/Latino Communities

Hispanic/Latino Communities in the Los Angeles Area in 2010



Hispanic/Latino Communities with Substantial Population Share Decline in the Los Angeles MSA in 2010-2020



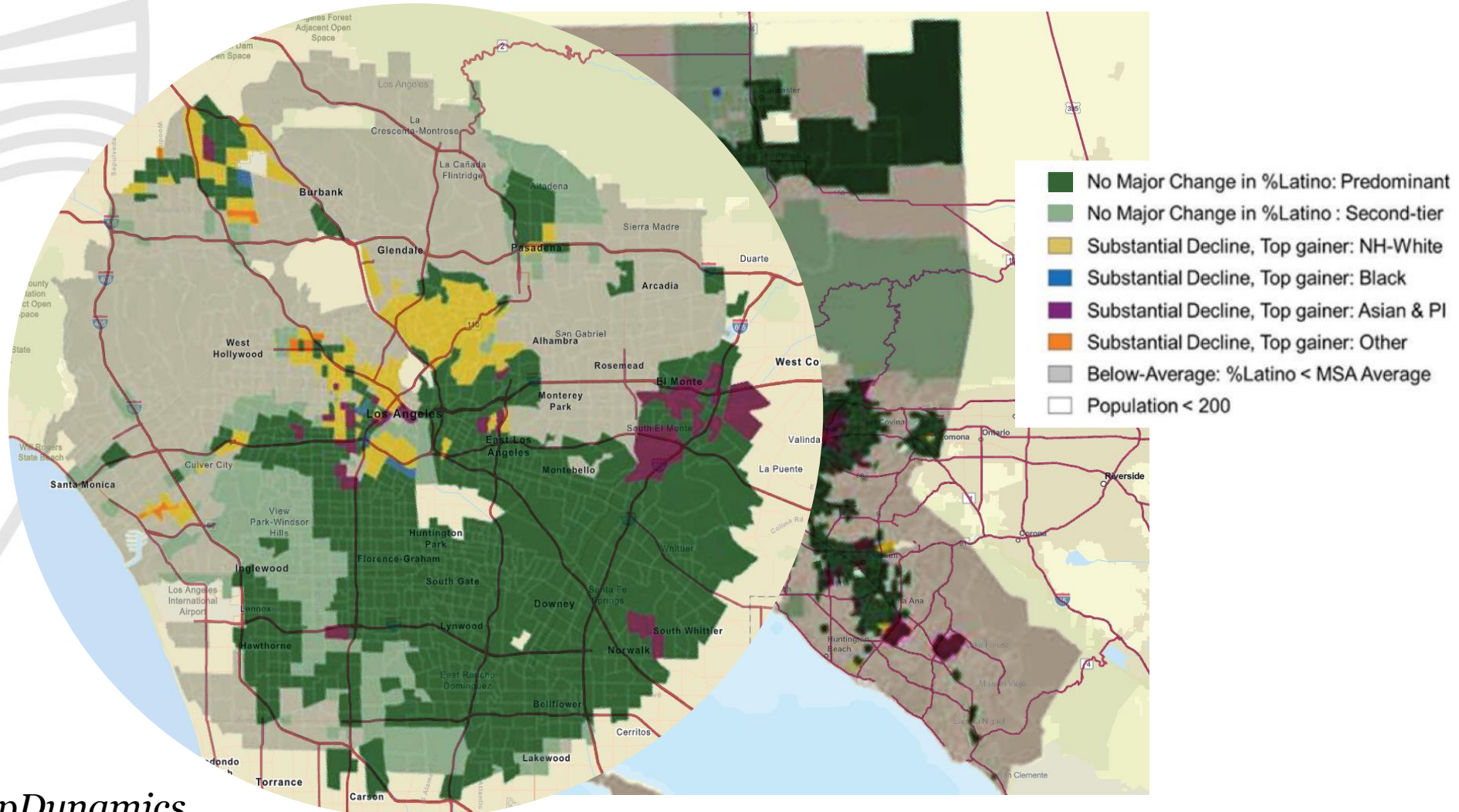


Who are the top gainers?

2. What other groups have been the most frequent replacements when existing communities decrease their concentrations in a neighborhood?

Who moved in?

Which Groups Gained Where Hispanic/Latinos Declined?





Summary

1. The metro area is **slowly growing**, a total population gain of 2.9% over the decade, and **none of its race/ethnic groups are changing** rapidly.
2. Local area changes are not from large increases of any particular group but from **re-sorting of the existing number of residents** as people seek to adjust their housing.
3. Hispanic/Latino population is the largest group in the MSA (44.6%).
4. All of the groups often overlap with one another in particular neighborhoods.
5. Communities of color are not sharply bounded in space. They continue to spread over time.

Thank you

USCPrice

Sol Price School of Public Policy

**For latest research
on housing and
demographics**

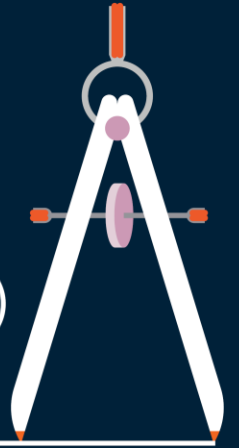
<https://sites.usc.edu/popdynamics/housing/>

**David Flores Moctezuma
rosasflo@usc.edu**

USCPrice

2024 SOUTHERN CALIFORNIA DEMOGRAPHIC WORKSHOP

NAVIGATING THE NEW GROWTH REALITY



scag.ca.gov/demographics





SLAB's ethniCITY project
re-mapping race and ethnicity
in LA county

Annette M. Kim
Associate Professor at USC
Price School of Public Policy & Roski School of Art and Design

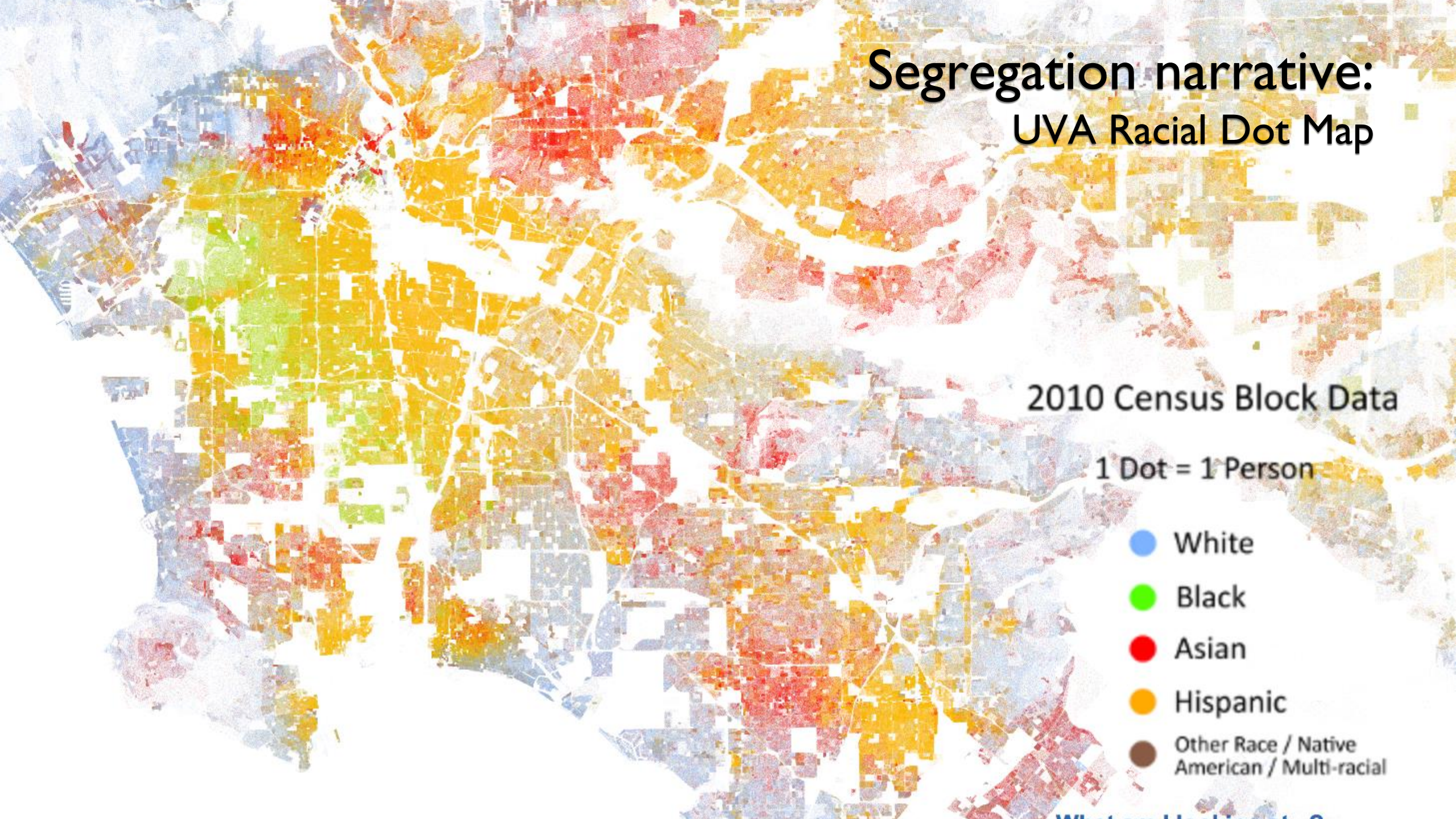
we mostly have been mapping
race
and
residential patterns
as exclusive territories

Segregation narrative: UVA Racial Dot Map

2010 Census Block Data

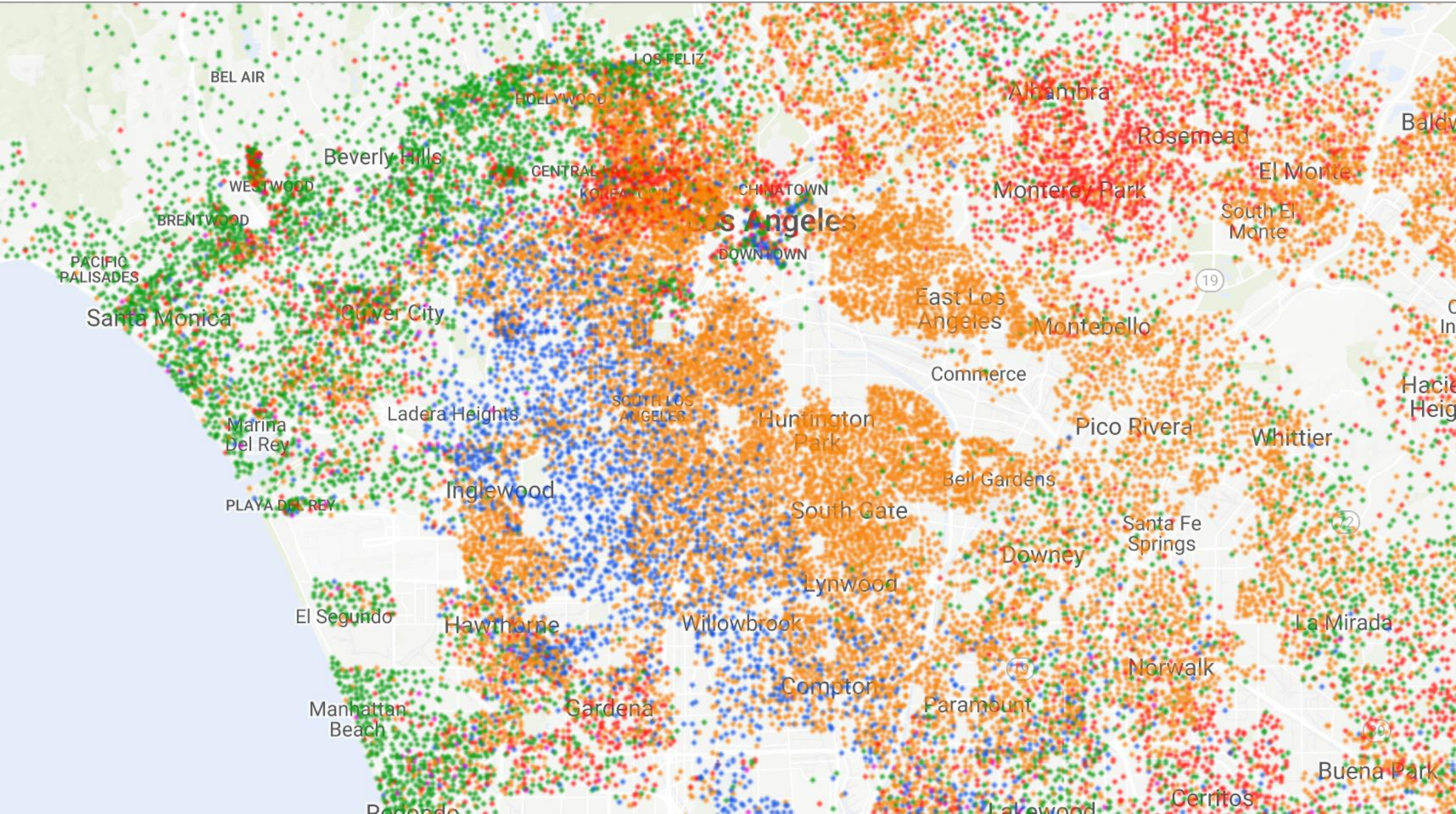
1 Dot = 1 Person

- White
- Black
- Asian
- Hispanic
- Other Race / Native American / Multi-racial

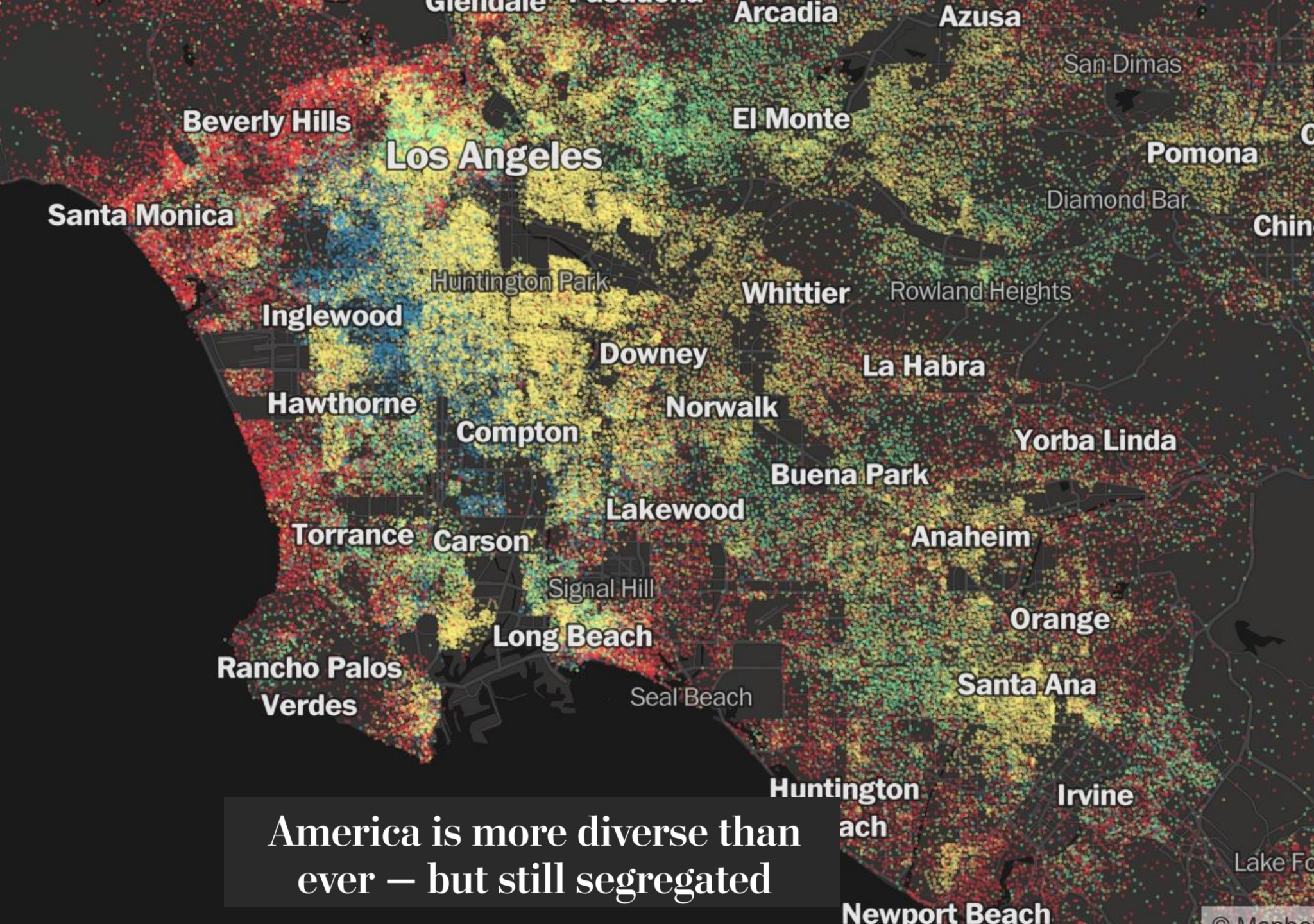


Mapping Segregation

New government rules will require all cities and towns receiving federal housing funds to assess patterns of segregation.



New
York
Times



America is more diverse than ever – but still segregated

Washington Post

LA is unusual

residential exposure index:

Unlike other major American cities, L.A.'s racial and ethnic groups are more likely to encounter each other at the neighborhood level.



The city speaks to us

The built environment is inscribed with text claiming ethnic identity

ethnicity as a driver of geographies

USC SLAB

generated a new kind of database:

Linguistic Landscape database

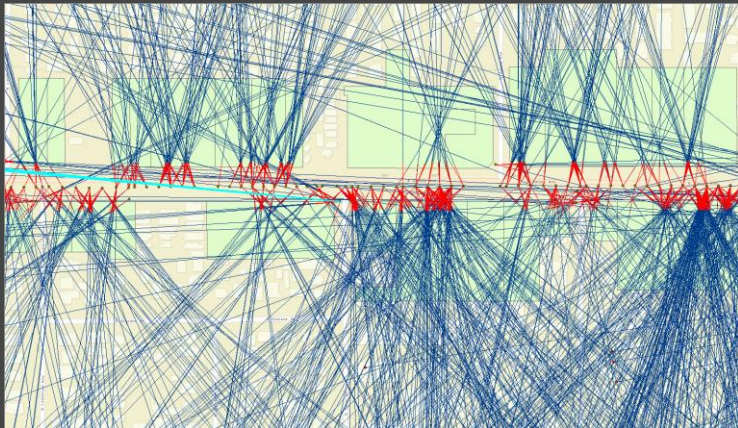
- self-expression in signage
- commercial, community, and institutional land uses

SIGNS IN LOS ANGELES

Google OCR of Google Streetview images
= database of signage text



Geocode location of signage text: based on groundtruthing



Analyzed error patterns in geocoding location of text i.e. street corners, strip malls, and parking lots,
<148°



Identified parcels as the optimal urban spatial unit of analysis:
93.1% accuracy

New kind of Urban Data

text in the built environment:
synergizes computer vision +
humanities + social science
+ urban planning

= map ethnic places

SLAB espouses groundtruthing
through field study of the built
environment and interviews to
critically shape our data creation.



Our data fills a gap

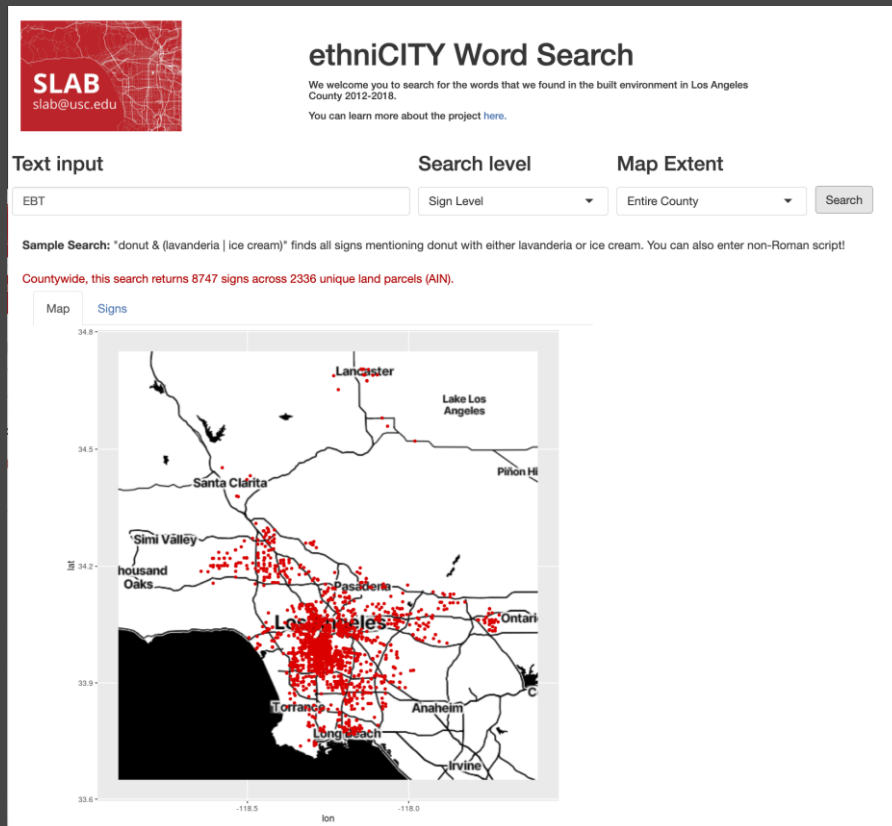
Missing or inaccurate data:

- LA city office of Finance
- Survey of Business Owners
- Google map search, yelp search,
- Reference USA, Dun+Bradstreet

Linguistic Landscape Database

Words mapped to individual land parcels

“EBT”



ethniciTY Word Search
We welcome you to search for the words that we found in the built environment in Los Angeles County 2012-2018.
You can learn more about the project [here](#).

Text input **Search level** **Map Extent**

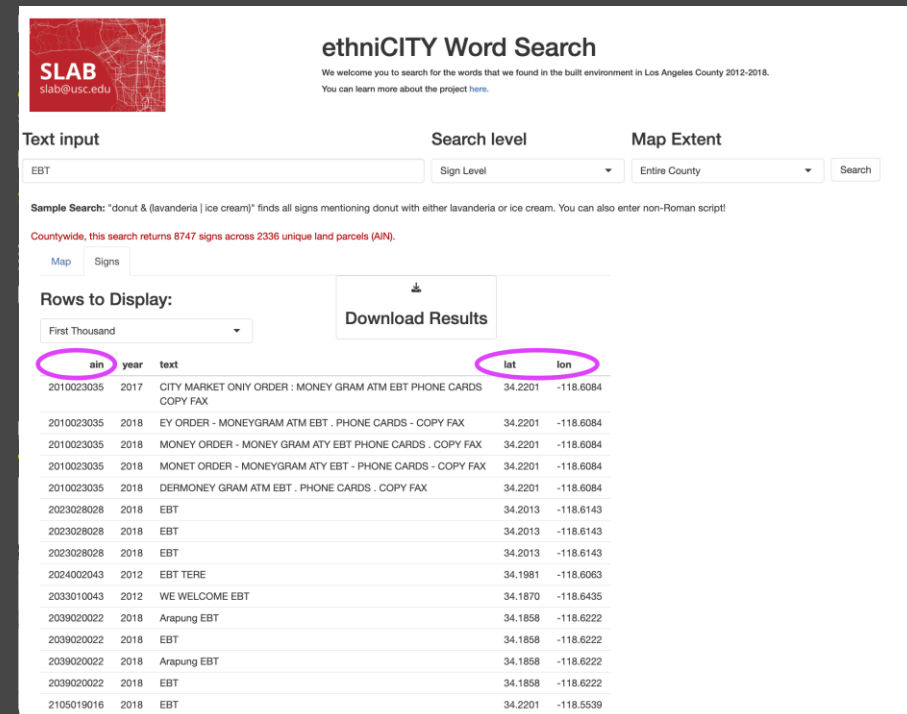
EBT Sign Level Entire County Search

Sample Search: "donut & (lavanderia | ice cream)" finds all signs mentioning donut with either lavanderia or ice cream. You can also enter non-Roman script!

Countywide, this search returns 8747 signs across 2336 unique land parcels (AIN).

Map Signs

Map showing the geographic distribution of EBT signs across Los Angeles County, with red dots indicating sign locations. Major cities labeled include Lancaster, Santa Clarita, Simi Valley, Thousand Oaks, Pasadena, Los Angeles, Torrance, Long Beach, Anaheim, Irvine, and Ontario.



ethniciTY Word Search
We welcome you to search for the words that we found in the built environment in Los Angeles County 2012-2018.
You can learn more about the project [here](#).

Text input **Search level** **Map Extent**

EBT Sign Level Entire County Search

Sample Search: "donut & (lavanderia | ice cream)" finds all signs mentioning donut with either lavanderia or ice cream. You can also enter non-Roman script!

Countywide, this search returns 8747 signs across 2336 unique land parcels (AIN).

Map Signs

Rows to Display: Download Results

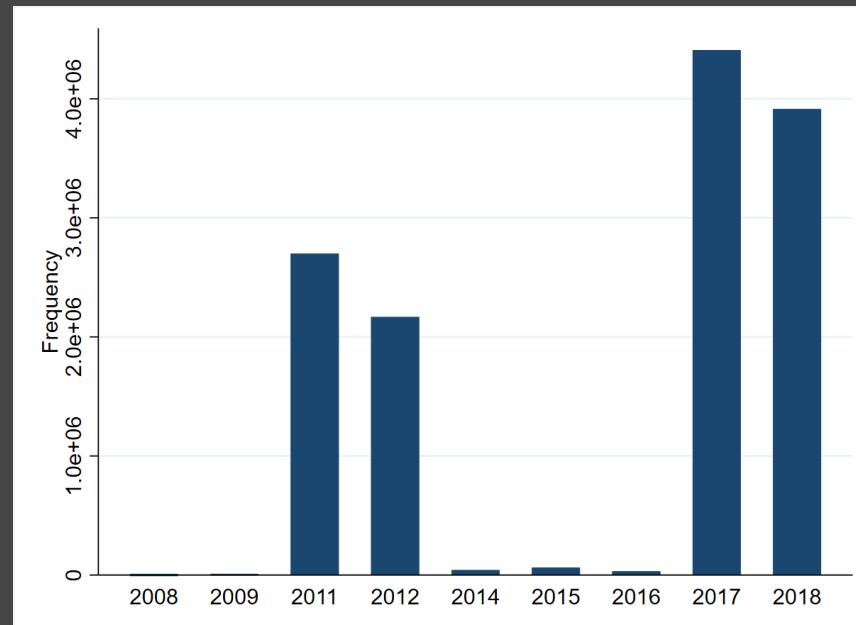
First Thousand

ain	year	text	lat	lon
2010023035	2017	CITY MARKET ONIY ORDER : MONEY GRAM ATM EBT PHONE CARDS COPY FAX	34.2201	-118.6084
2010023035	2018	EY ORDER - MONEYGRAM ATM EBT . PHONE CARDS - COPY FAX	34.2201	-118.6084
2010023035	2018	MONEY ORDER - MONEY GRAM ATY EBT PHONE CARDS . COPY FAX	34.2201	-118.6084
2010023035	2018	MONET ORDER - MONEYGRAM ATY EBT - PHONE CARDS - COPY FAX	34.2201	-118.6084
2010023035	2018	DERMONEY GRAM ATM EBT . PHONE CARDS . COPY FAX	34.2201	-118.6084
2023028028	2018	EBT	34.2013	-118.6143
2023028028	2018	EBT	34.2013	-118.6143
2023028028	2018	EBT	34.2013	-118.6143
2024002043	2012	EBT TERE	34.1981	-118.6063
2033010043	2012	WE WELCOME EBT	34.1670	-118.6435
2039020022	2018	Arapung EBT	34.1858	-118.6222
2039020022	2018	EBT	34.1858	-118.6222
2039020022	2018	Arapung EBT	34.1858	-118.6222
2039020022	2018	EBT	34.1858	-118.6222
2105019016	2018	EBT	34.2201	-118.5539

word search site: https://capilgram.shinyapps.io/gsv_search_interface/

Linguistic Landscape Data

13.3 million lines of text on street facing signage geocoded to **351,146** parcels of land in LA county, out of 647,291 commercial land parcels



ethniCITY database

96 cultures proclaiming
identity with text in
the built environment:

86,545 signs

20,541 parcels

culture	Unique parcels
Mexico	5462
China	2108
Thailand	1936
Iran	1652
South Korea	1561
Japan	981
Italy	899
El Salvador	628
France	553
India	509
African American	367
Germany	302
Brazil	235
Vietnam	224
Philippines	223
Guatemala	207
Armenia	170
Sweden	159
Greece	146
Israel	124
Peru	124
Honduras	119
United Kingdom	119
Cuba	105

SLAB

CULTURAL HUBS IN LOS ANGELES

AfricaPacific MiddleEast

- Afghani
- Armenian
- Ethiopian
- Iranian
- Israeli
- Moroccan
- Samoan

ALL ON

EUROPE

- Belgian
- British
- Croatian
- Dutch
- French
- German
- Greek
- Italian
- Lithuanian
- Macedonian
- Portuguese
- Spanish
- Swedish
- Swiss

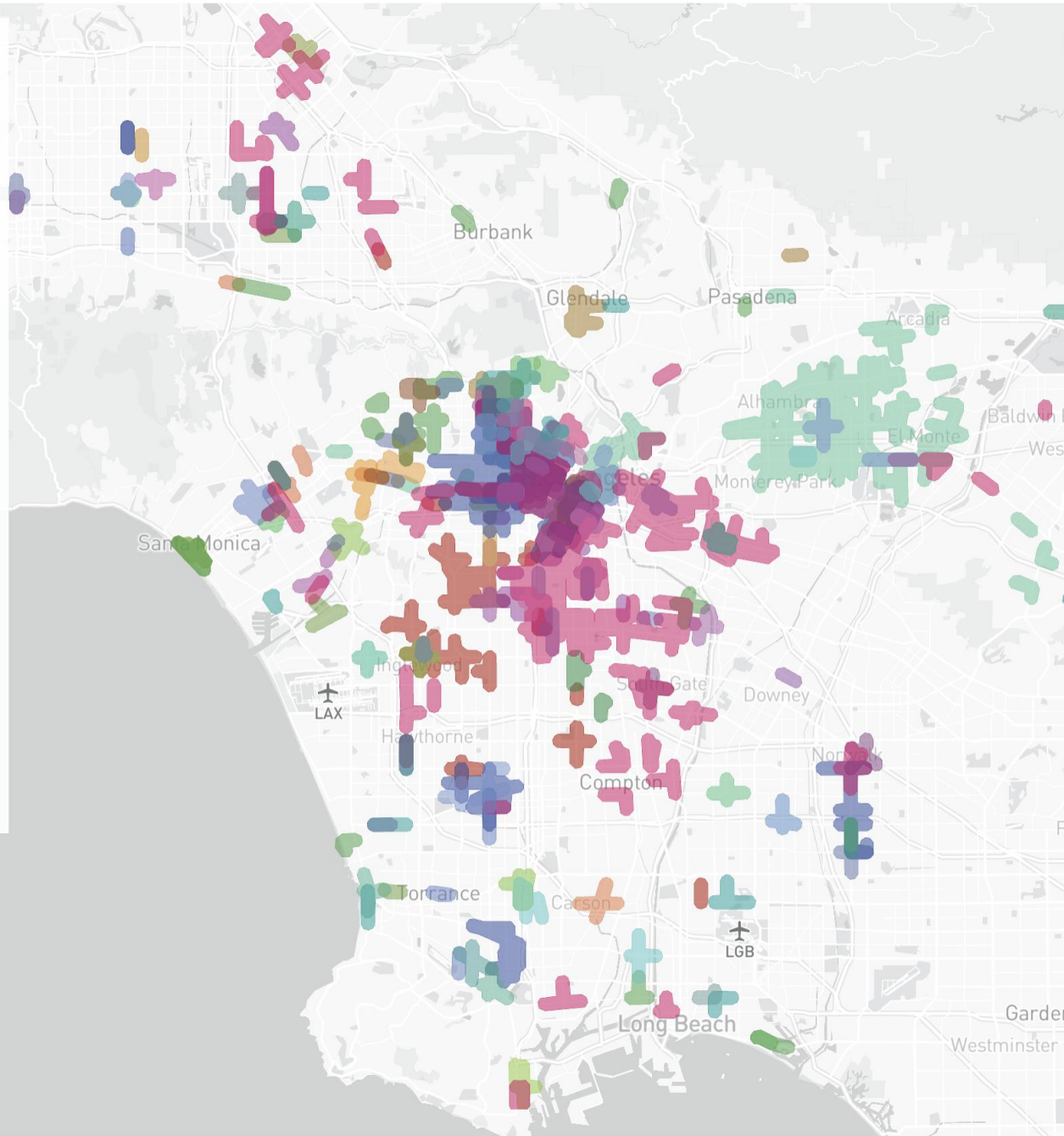
ALL OFF

ASIA

- Bangladeshi
- Burmese
- Cambodian
- Chinese
- Filipino
- Indian
- Indonesian
- Japanese
- Korean
- Malaysian
- Mongolian
- Nepalese
- Pakistani
- Russian
- Sri Lankan
- Taiwanese
- Thai
- Vietnamese

AMERICAS

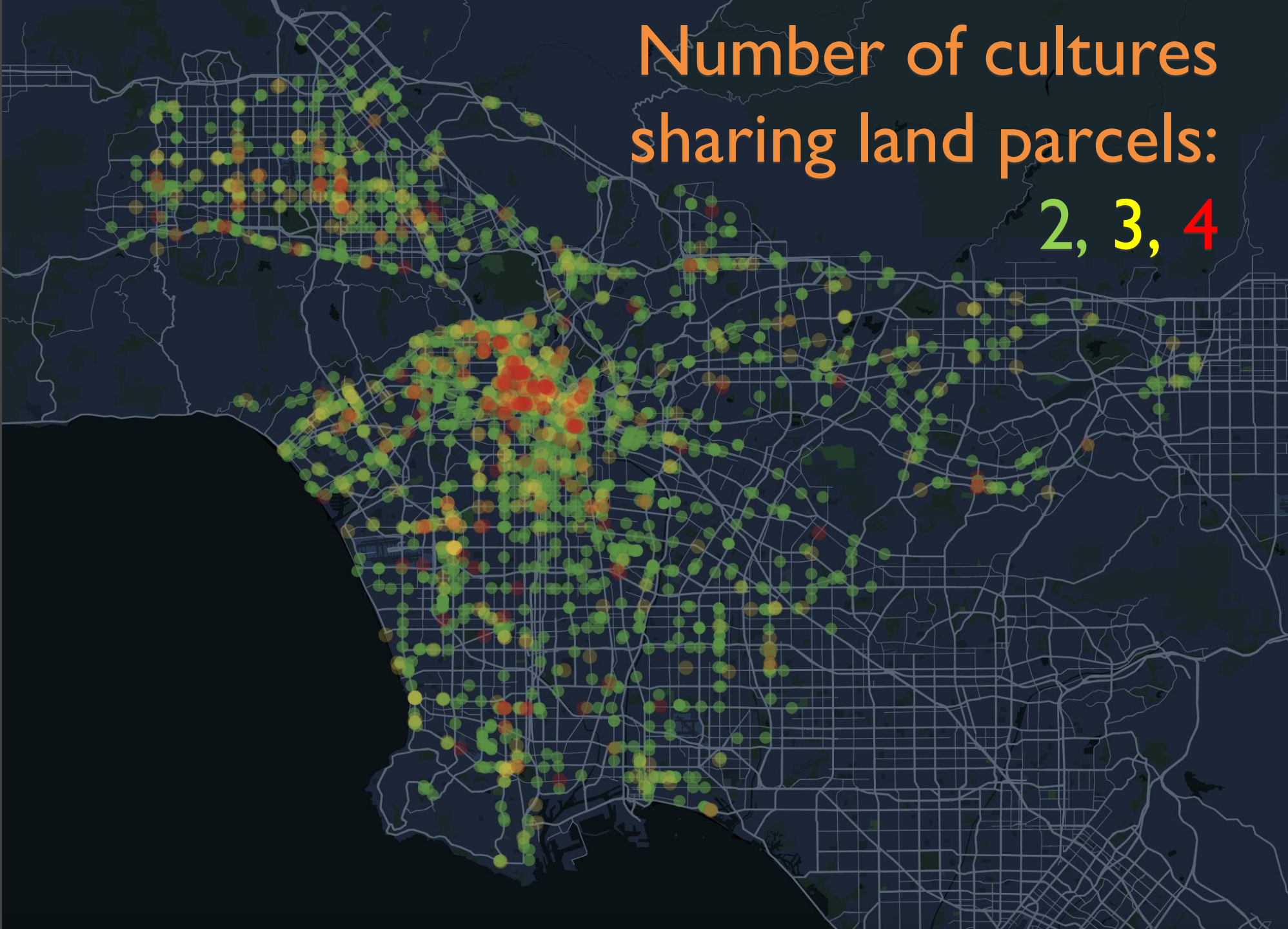
- African American
- Antigua Barbudan
- Barbadian
- Belizean
- Brazilian
- Chilean
- Colombian
- Costa Rican
- Cuban
- Curacaoan
- El Salvadoran
- Guatemalan
- Honduran
- Jamaican
- Mexican
- Peruvian
- Nicaraguan
- Puerto Rican
- Trinidadian & Tobagonian
- Venezuelan



58
culture's
hubs
in LA county

Number of cultures
sharing land parcels:

2, 3, 4



Sharing space and talking to each other

“It’s not just that we happen to be next door to each other. We talk to each other. We found that signs on 18% of properties in L.A. contain more than one language or cultural expression. It’s not uncommon to see one sign featuring three or more languages.”



Multi-layered
ethnic
interactions in
everyday places

UNIVERSAL STU



L.A. POULTRY

LIVE, FRESH, FOOD TO GO

POLLERIA 家禽肉

(213) 739-0303

why buy
frozen
when you
can buy
fresh



V. P. TOFU 永豐豆腐

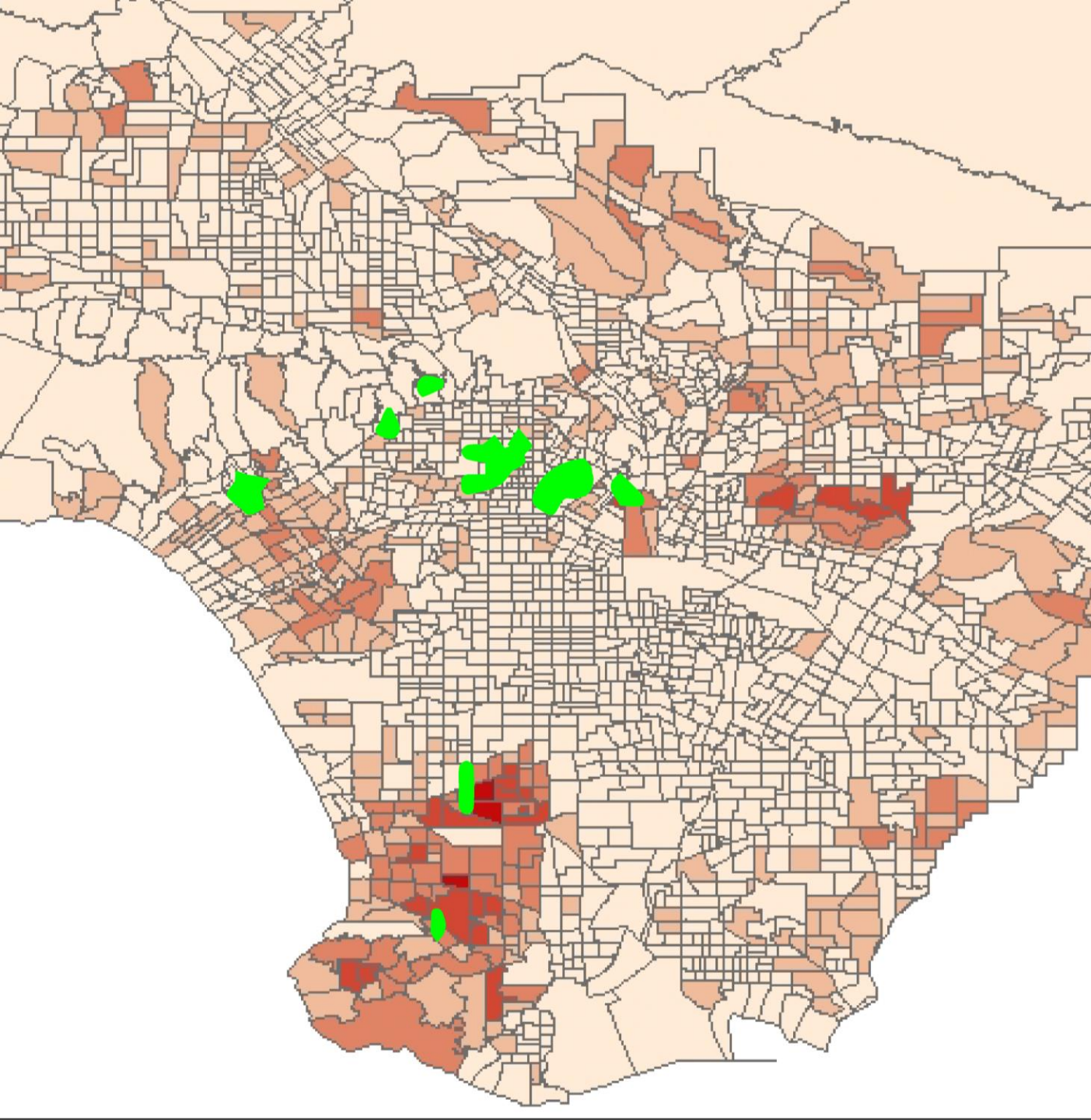
Đậu Hủ Vĩnh Phong

CUSTOMER PARKING
BUSINESS HOURS ONLY
NO PARKING
AT OTHERS & OFFICE
CALL THE STORE
FOR MORE INFORMATION
678-275-1234

PARKING
ONLY
ACCESSIBLE
MINIMUM
FINE \$250

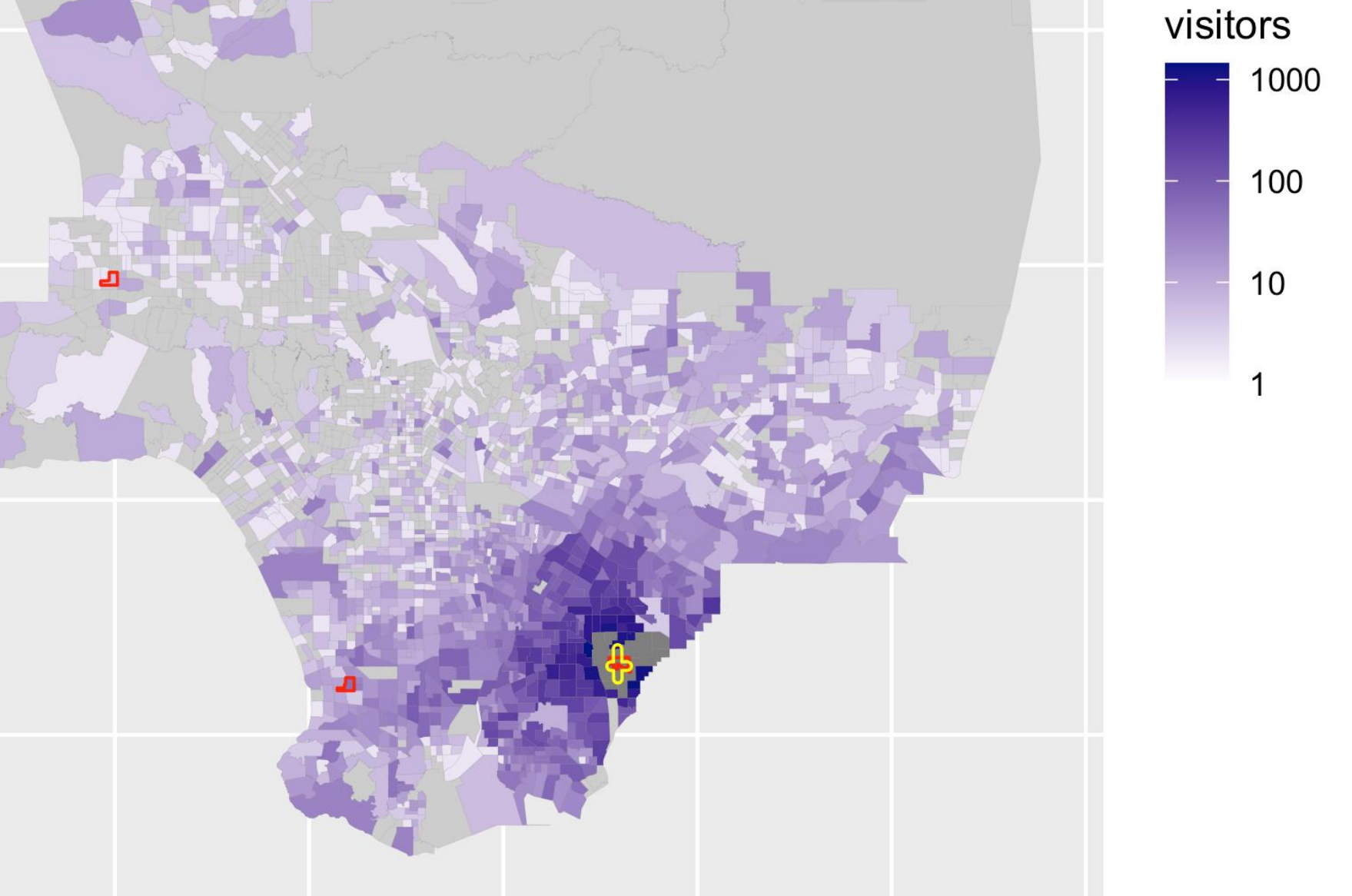
UNLAWFUL PARKING
IN DESIGNATED ACCESSIBLE
SPACES MAY BE SUBJECT TO
CITATION, FINE, OR
TOWING. VEHICLES PLACED
IN THESE SPACES WITHOUT
THE NECESSARY PERMITS
OR AUTHORITY WILL BE
TOWED AWAY AT THE
OWNER'S RISK AND
EXPENSE. NO TOWING
OR RECOVERY AT
THE CITY'S EXPENSE.





Commuting to culture:
not ethnic enclaves

Japanese cultural hubs
census residential hotspots



More evidence from mobile phone data: de-coupling of residence and cultural places

Indian residential hotspots

Little India

“Little India” Pioneer Boulevard in Artesia



People Making Places: "Little India" on Pioneer Boulevard



Bill's Taco House in South LA



Using the linguistic landscape data to study ethnic places

home, work, and... "third places"

i.e. cafes, bars, bookstores, bowling alleys....

(Oldenburg and Brisset, 1982; Bosman and Dolley 2019; Finlay et al 2019)

Third Places redux: class and race/ethnicity

places are accessed amidst
social stratification and
uneven urban geographies.

third places: ethnic cultural hubs

For more info about this project,
check out our website:



Los Angeles Times

Opinion: How do L.A.'s ethnic communities keep their identities while living with others?
Just read the signs



Cultural communities in Los Angeles use signs to speak to other groups, as seen in this diptych showing (above) a poultry shop sign on Virgil Avenue that features three languages and (below) three languages on a restaurant sign in Monterey Park. (Annette M. Kim)

By Annette M. Kim

May 21, 2024 3:05 AM PT