



Eric Garcetti
Mayor



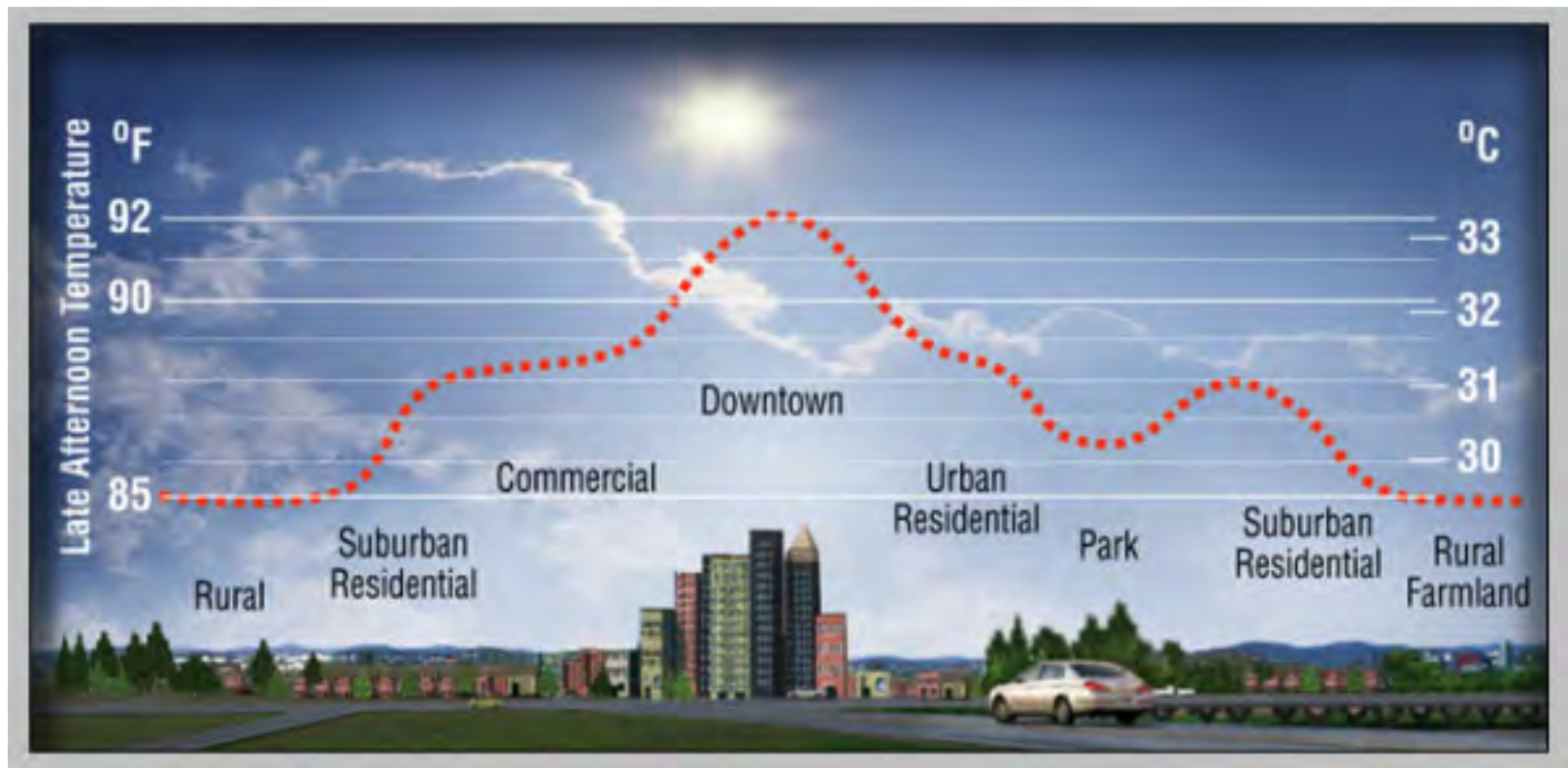
Kevin James
Board President



Greg Spotts
Assistant Director
Los Angeles Bureau of Street Services

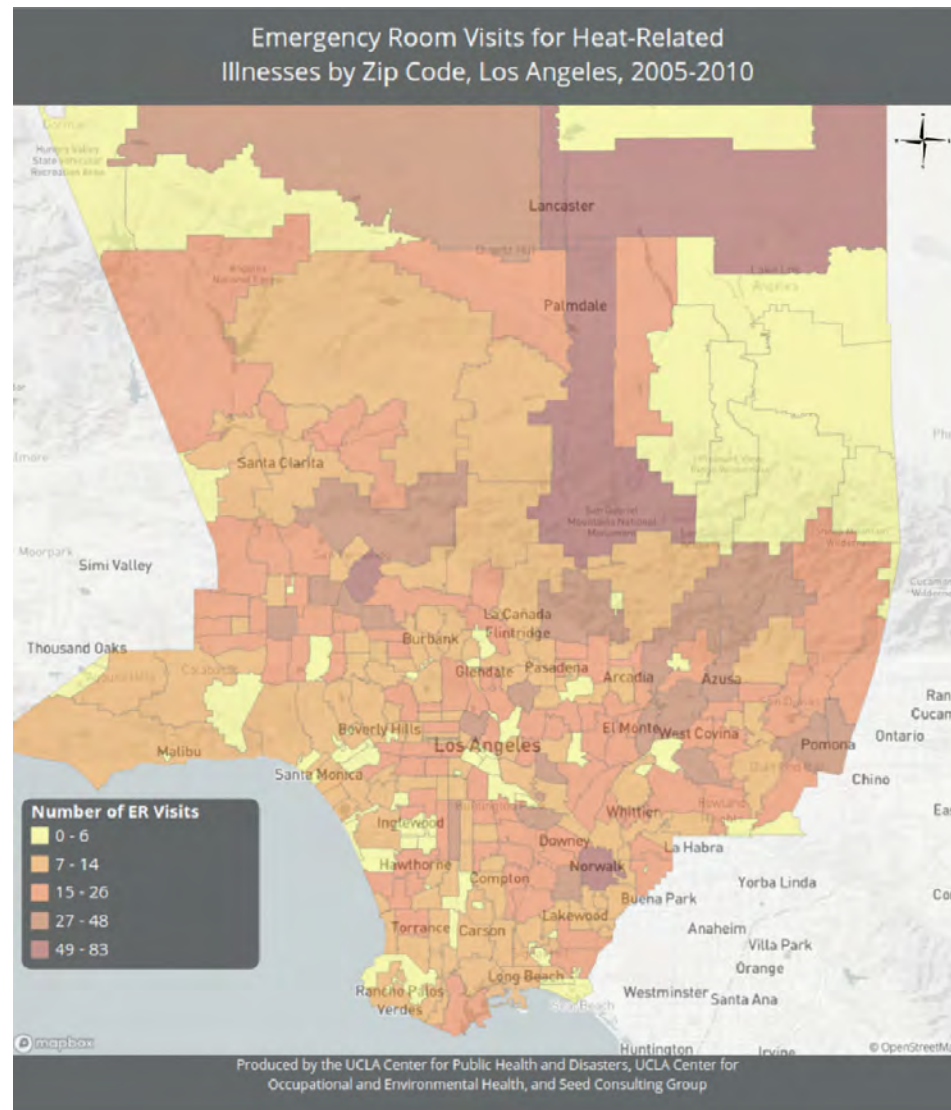
Heat Island Effect:

Cities are hotter than the surrounding countryside, because the built environment absorbs heat

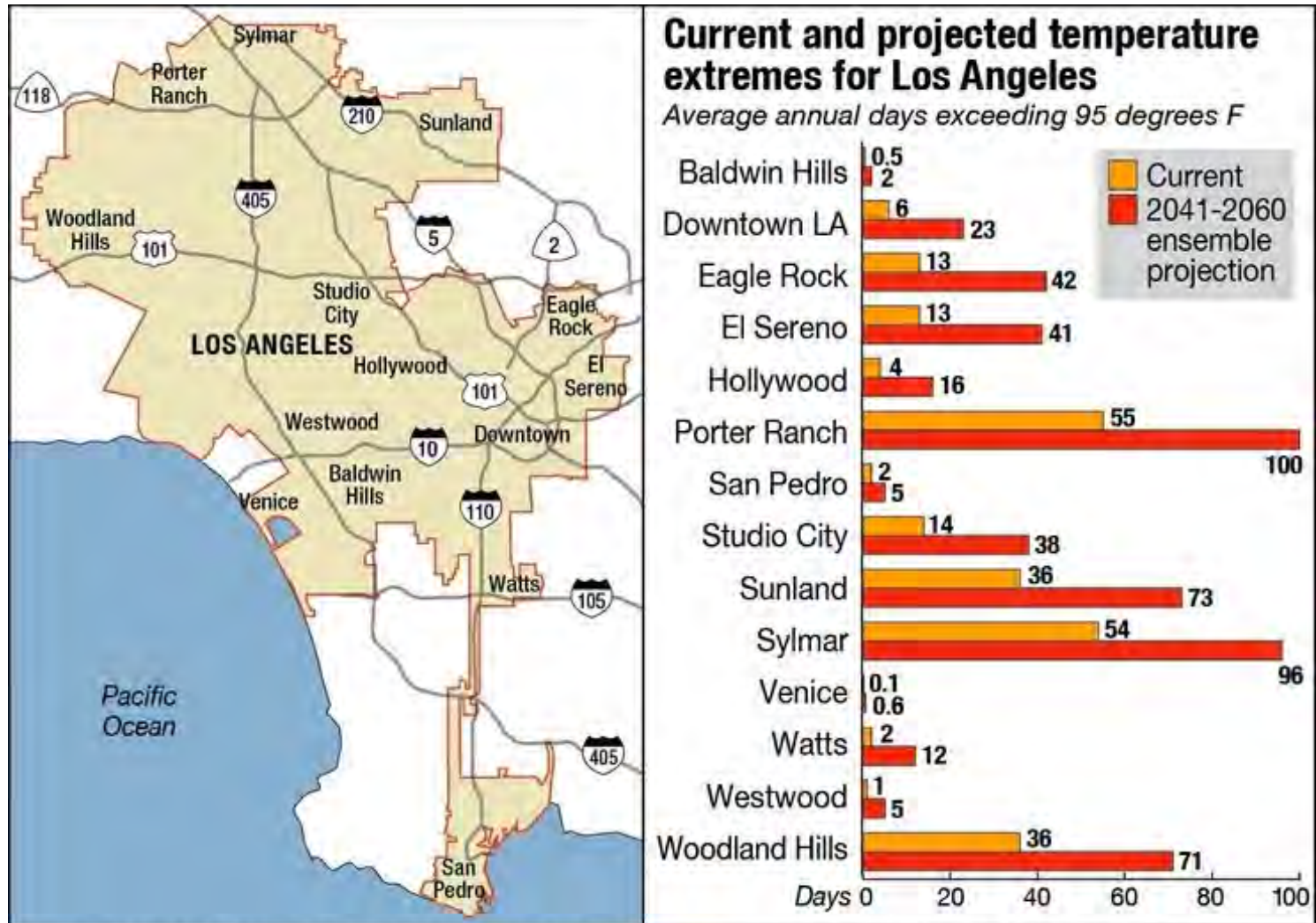


LA experiences heat-related illnesses and deaths

(One of the only cities with heat related deaths in Winter)



And LA is expected to get HOTTER!



Source: UCLA LARC study, 2012; chart based on the mean/average projected by the 18 climate models

Three Strategies can reduce the Heat Island Effect:



Shade Trees

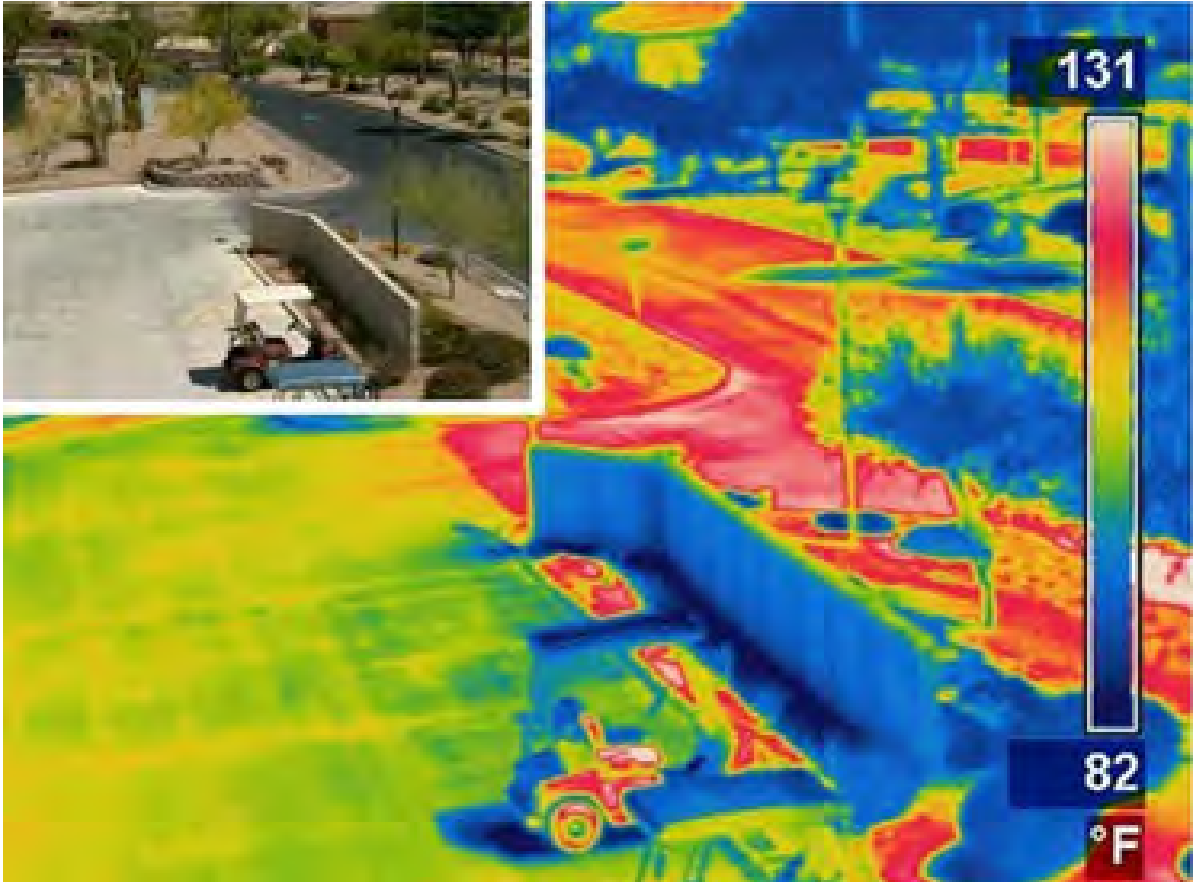


Cool Roofs

Cool Pavement



Black asphalt absorbs more heat than lighter colored pavements



Grey parking lot is lower temp than black asphalt roadway

In July 2015, BSS partnered with Rec & Parks and GSD to Install a Test Patch of Cool Pavement Coating at Balboa Sports Complex



Two Coats of Guard Top Cool Seal are applied



Finished Product with striping

Gray Coating is 10 degrees Fahrenheit cooler than black asphalt



GSD Test Results:

Material passed
California skid test and
slip test, meaning it is
safe under wet
conditions

In summer afternoons,
coated area was 10
degrees cooler than
untreated black asphalt
across the median

Next Step: Obtained Funding to install on Public Streets
One city block in each of the 15 Council Districts
-completed 2017



Results of Pilot Project Phase 1:



Greg Spotts
@Spottnik

It's very hot on Coronado St in CD13- but the Cool Seal treated pavement is more than 10 degrees F cooler than black asphalt
[@MitchOFarrell](#)



3:06 PM - 29 Aug 2017

1. Thermal performance is as expected: 10 deg cooler
2. Residents greeting the installation with excitement
3. Press coverage from LA Times, NY Times, Washington Post, NPR, local TV stations
4. Inquiries from other cities
5. Potential concerns about staining / darkening

Summer 2018: Guard Top contractor re-coats 9 locations with revised Cool Seal Formulation



First coat applied using slurry buggy

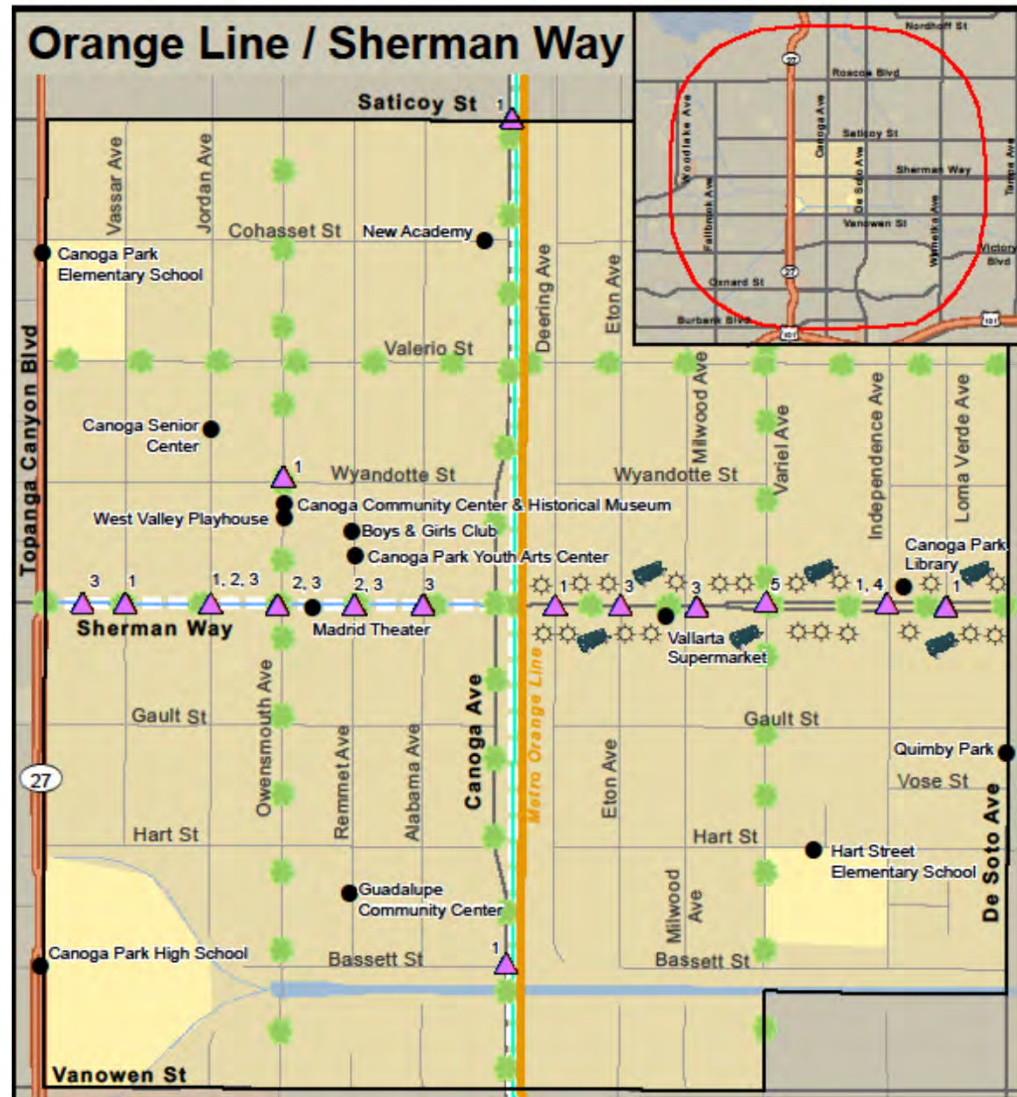
GOAL: improved thermal performance as coating ages, with reduced erosion and staining



Second coat applied by hand spray

Next Steps: Cool LA Pilot Funded by SB1 Planning Grant Sherman Way Orange Line Station

Cool Pavement + Cool Roofs + Shade Trees = Cool Neighborhood!



Next Steps: Multi-Product Demonstration Site At LADWP LaKretz Innovation Campus in DTLA Arts District



Next Steps: Cool Pavement Phase 2- Coating a Subdivision, to see if a neighborhood-level cooling effect can be realized



Next Steps: Cool Pavement on a Major Off-Street Bike Path?

Open with

metro.net/projects/R2R

Active Transportation Rail to River Corridor

Community Meetings - Thursday, December 8, 2016 / Reuniones Comunitarias - Jueves, 8 de diciembre de 2016 - 3-5 pm & 6-8 pm

M Metro

Join us for a chance to win a bicycle & helmet!
¡Participe para una oportunidad de ganar una bicicleta y casco!

ME: greg.spotts@lacity.org

BSS: WE'RE HERE TO HELP!



311 or 800-996-CITY



<http://lacity.org/myla-311>



Twitter @BSSLosAngeles



facebook.com/BSSLosAngeles

Mobile App

– MyLA311 (IOS & Android)



"MyLA 311 puts the power of City Hall in the palm of your hand."