



SOUTHERN CALIFORNIA
ASSOCIATION OF GOVERNMENTS
900 Wilshire Blvd., Ste. 1700
Los Angeles, CA 90017
T: (213) 236-1800
www.scag.ca.gov

REGIONAL COUNCIL OFFICERS

President
Art Brown, Buena Park

First Vice President
Curt Hagman, County of San Bernardino

Second Vice President
Cindy Allen, Long Beach

Immediate Past President
Jan C. Harnik, Riverside County Transportation Commission

COMMITTEE CHAIRS

Executive/Administration
Art Brown, Buena Park

Community, Economic & Human Development
Frank Yokoyama, Cerritos

Energy & Environment
Deborah Robertson, Rialto

Transportation
Tim Sandoval, Pomona

MEETING OF THE

GREENPRINT TECHNICAL ADVISORY COMMITTEE

***Members of the Public are Welcome to Attend
In-Person & Remotely***

Monday, October 30, 2023

1:00 p.m. – 4:00 p.m.

To Attend In-Person:

**SCAG Main Office – Regional Council Room
900 Wilshire Blvd., Ste. 1700
Los Angeles, CA 90017**

To Attend and Participate on Your Computer

<https://scag.zoom.us/j/88214100189>

To Attend and Participate by Phone:

Call-in Number: 1-669-900-6833

Meeting ID: 882 1410 0189

PUBLIC ADVISORY

If members of the public wish to review the attachments or have any questions on any of the agenda items, please contact Maggie Aguilar at (213) 630-1420 or via email at aguilarm@scag.ca.gov. Agendas are also available at: <https://scag.ca.gov/social-greenprint-technical-advisory-committee>

SCAG, in accordance with the Americans with Disabilities Act (ADA), will accommodate persons who require a modification of accommodation in order to participate in this meeting. SCAG is also committed to helping people with limited proficiency in the English language access the agency's essential public information and services. You can request such assistance by calling (213) 630-1420. We request at least 72 hours (three days) notice to provide reasonable accommodations and will make every effort to arrange for assistance as soon as possible.



Instructions for Attending the Meeting

To Attend In-Peron and Provide Verbal Comments: Go to the SCAG Main Office located at 900 Wilshire Blvd., Ste. 1700, Los Angeles, CA 90017 or any of the remote locations noticed in the agenda. The meeting will take place in the Regional Council Room on the 17th floor starting at 1:00 p.m.

To Attend by Computer: Click the following link: <https://scag.zoom.us/j/88214100189>. If Zoom is not already installed on your computer, click “Download & Run Zoom” on the launch page and press “Run” when prompted by your browser. If Zoom has previously been installed on your computer, please allow a few moments for the application to launch automatically. Select “Join Audio via Computer.” The virtual conference room will open. If you receive a message reading, “Please wait for the host to start this meeting,” simply remain in the room until the meeting begins.

To Attend by Phone: Call **(669) 900-6833** to access the conference room. Given high call volumes recently experienced by Zoom, please continue dialing until you connect successfully. Enter the **Meeting ID: 882 1410 0189**, followed by **#**. Indicate that you are a participant by pressing **#** to continue. You will hear audio of the meeting in progress. Remain on the line if the meeting has not yet started.

Instructions for Participating and Public Comments

Members of the public can participate in the meeting via written or verbal comments.

1. **In Writing:** Written comments can be emailed to: ePublicComment@scag.ca.gov. Written comments received **by 5pm on Friday, October 27, 2023**, will be transmitted to members of the legislative body and posted on SCAG’s website prior to the meeting. You are **not** required to submit public comments in writing or in advance of the meeting; this option is offered as a convenience should you desire not to provide comments in real time as described below. Written comments received after 5pm on Friday, October 27, 2023, will be announced and included as part of the official record of the meeting. Any writings or documents provided to a majority of this committee regarding any item on this agenda (other than writings legally exempt from public disclosure) are available at the Office of the Clerk, at 900 Wilshire Blvd., Suite 1700, Los Angeles, CA 90017 or by phone at (213) 630-1420, or email to aguilarm@scag.ca.gov.

OUR MISSION

To foster innovative regional solutions that improve the lives of Southern Californians through inclusive collaboration, visionary planning, regional advocacy, information sharing, and promoting best practices.

OUR VISION

Southern California’s Catalyst for a Brighter Future

OUR CORE VALUES

Be Open | Lead by Example | Make an Impact | Be Courageous



2. **Remotely:** If participating in real time via Zoom or phone, please wait for the presiding officer to call the item for which you wish to speak and use the “raise hand” function on your computer or *9 by phone and wait for SCAG staff to announce your name/phone number.
3. **In-Person:** If participating in-person, you are invited but not required, to fill out and present a Public Comment Card to SCAG staff prior to speaking. It is helpful to indicate whether you wish to speak during the Public Comment Period (Matters Not on the Agenda) and/or on an item listed on the agenda.

General Information for Public Comments

Verbal comments can be presented in real time during the meeting. Members of the public are allowed a total of 3 minutes for verbal comments. SCAG staff or consultants managing the meeting retain discretion to adjust time limits as necessary to ensure efficient and orderly conduct of the meeting, including equally reducing the time of all comments.

In accordance with SCAG’s Regional Council Policy, Article VI, Section H and California Government Code Section 54957.9, if a SCAG meeting is “willfully interrupted” and the “orderly conduct of the meeting” becomes unfeasible, the presiding officer or the Chair of the legislative body may order the removal of the individuals who are disrupting the meeting.

OUR MISSION

To foster innovative regional solutions that improve the lives of Southern Californians through inclusive collaboration, visionary planning, regional advocacy, information sharing, and promoting best practices.

OUR VISION

Southern California’s Catalyst for a Brighter Future

OUR CORE VALUES

Be Open | Lead by Example | Make an Impact | Be Courageous



GREENPRINT TECHNICAL ADVISORY COMMITTEE MEETING AGENDA

TELECONFERENCE AVAILABLE AT THESE ADDITIONAL LOCATIONS

<p>Francis Appiah Department of Transportation Division of Environmental Planning 100 S. Main Street Los Angeles, CA 90012</p>	<p>Amanda Fagan Ventura County Transportation Commission 751 E. Daily Drive, Suite 420 Camarillo, CA 93010</p>	<p>Aaron Gabbe RCA/RCTC office 3403 Tenth Street, Suite 320 Riverside, CA 92501</p>
<p>Lesley Hill Orange County Transportation Authority 600 S. Main Street Conference Room 101 Orange, CA 92868</p>	<p>Dan Phu Orange County Transportation Authority 600 S. Main Street Conference Room 101 Orange, CA 92868</p>	<p>Alan Wapner City of Ontario - City Hall 303 East B Street Conference Room 2 Ontario, CA 91764</p>
<p>Ken Baez County of Riverside Planning Department 4080 Lemon Street, 12th Floor Riverside, CA</p>	<p>Janice Parvin County of Ventura – Supervisor Parvin’s Office 980 Enchanted Way #203 Simi Valley, CA 93065</p>	<p>Chelsie Kennedy County of Ventura – Supervisor Parvin’s Office 980 Enchanted Way #203 Simi Valley, CA 93065</p>
<p>Anish Saraiya Kenneth Hahn Hall of Administration 500 W. Temple St. Los Angeles, CA 90012</p>	<p>Shelley Sussman Ventura County Resource Management Agency 800 S. Victoria Avenue Ventura, CA 93009</p>	<p>Donald Wagner County Administration North 400 West Civic Center Drive 6th Floor, Conference Room A Santa Ana, CA 92701</p>
<p>Art Bishop Town of Apple Valley 14955 Dale Evans Pkwy Town Hall Conference Room A Apple Valley, CA 92307</p>	<p>Jenny Crosswhite City of Santa Paula - City Hall 970 E Ventura St Santa Paula, CA 93060</p>	<p>Justin Equina City of Irvine - City Hall Community Development 1 Civic Center Plaza Irvine, CA 92606</p>
<p>Kathleen Kelly 46-100 Burroweed Lane Palm Desert, CA 92260</p>	<p>Larry McCallon City of Highland - City Hall 27215 Base Line Highland, CA 92346</p>	<p>Bill McReynolds City of Ventura – City Hall 501 Poli Street Ventura, CA 93001</p>
<p>Crystal Ruiz 674 Sunnyside Boulevard San Jacinto, CA 92582</p>	<p>Jocelyn Swain City of Lancaster - City Hall 44933 Fern Avenue Lancaster, CA 93534</p>	<p>Melanie Schlotterbeck Orange County Transportation Authority 600 S. Main Street Conference Room 101 Orange, CA 92868</p>



THE GREENPRINT TECHNICAL ADVISORY COMMITTEE
Members – October 2023

Caltrans

1. Mr. Francis Appiah
Mitigation Specialist, District 7 Representative

County Transportation Commissions

2. Ms. Marlene Flores
Associate Transportation Planner, ICTC Representative
3. Mr. Chris B. Liban
Sustainability Officer, LA Metro Representative
4. Mr. Dan Phu
Sustainability Program Manager, OCTA Representative
5. Lesley Hill – Alternate
Environmental Mitigation Program Manager, OCTA Representative
6. Mr. Aaron Gabbe
Regional Conservation Director, RCTC Representative
7. Ms. Tricia Campbell – Alternate
Regional Conservation Deputy Director, RCTC Representative
8. Hon. Alan Wapner
Regional Council Member, SBCTA Representative
9. Ms. Amanda Fagan
Director of Planning and Sustainability, VCTC Representative

Counties

10. Mr. Anish Saraiya
District 5 Planning and Public Works Deputy, Los Angeles County Representative
11. Hon. Donald Wagner
Supervisor, Orange County Representative

OUR MISSION

To foster innovative regional solutions that improve the lives of Southern Californians through inclusive collaboration, visionary planning, regional advocacy, information sharing, and promoting best practices.

OUR VISION

Southern California's Catalyst for a Brighter Future

OUR CORE VALUES

Be Open | Lead by Example | Make an Impact | Be Courageous



12. Mr. Ken Baez
Administrative Services Manager, Riverside County Representative
13. Hon. Curt Hagman
Supervisor, San Bernardino County Representative
14. Mr. Josh Lee – Alternate
Chief of Planning, San Bernardino County Representative
15. Hon. Janice Parvin
Supervisor, Ventura County Representative
16. Ms. Shelley Sussman – Alternate
General Plan Implementation Manager, Ventura County Representative

Cities

17. Ms. Connie Pallini-Tipton
Senior City Planner, Los Angeles Representative
18. Mr. Alexander Linz – Alternate
City Planning Associate, Los Angeles Representative
19. Mr. Bradley Bounds II
Project Planner, Long Beach Representative
20. Ms. Jocelyn Swain
Senior Planner, Lancaster Representative
21. Mr. Justin Equina
Senior Planner, Irvine Representative
22. Mr. Ted White
Planning & Building Director, Anaheim Representative
23. Ms. Heather Allen – Alternate
Principal Planner, Anaheim Representative
24. Hon. Crystal Ruiz
Mayor Pro Tem, San Jacinto Representative

OUR MISSION

To foster innovative regional solutions that improve the lives of Southern Californians through inclusive collaboration, visionary planning, regional advocacy, information sharing, and promoting best practices.

OUR VISION

Southern California's Catalyst for a Brighter Future

OUR CORE VALUES

Be Open | Lead by Example | Make an Impact | Be Courageous



GREENPRINT TECHNICAL ADVISORY COMMITTEE MEMBERSHIP

- 25. Hon. Kathleen Kelly
Mayor, Palm Desert Representative

- 26. Hon. Larry McCallon
Mayor, Highland Representative

- 27. Hon. Art Bishop
Council Member, Apple Valley Representative

- 28. Hon. Bill McReynolds
Council Member, Ventura Representative

- 29. Hon. Jenny Crosswhite
Council Member, Santa Paula Representative

Business Community

- 30. Mr. Tom Grable
Division President, Tri Pointe Homes Representative

Environmental Community

- 31. Ms. Melanie Schlotterbeck
Director, Friends of Harbors, Beaches and Parks Representative

OUR MISSION

To foster innovative regional solutions that improve the lives of Southern Californians through inclusive collaboration, visionary planning, regional advocacy, information sharing, and promoting best practices.

OUR VISION

Southern California's Catalyst for a Brighter Future

OUR CORE VALUES

Be Open | Lead by Example | Make an Impact | Be Courageous



GREENPRINT TECHNICAL ADVISORY COMMITTEE MEETING AGENDA

Southern California Association of Governments
900 Wilshire Boulevard, Suite 1700 – Regional Council Room
Los Angeles, CA 90017

Monday, October 30, 2023

1:00 PM

CALL TO ORDER AND ROLL CALL

PUBLIC COMMENT PERIOD (Matters Not on the Agenda)

This is the time for public comments on any matter of interest within SCAG's jurisdiction that is *not* listed on the agenda. For items listed on the agenda, public comments will be received when that item is considered. Although the committee may briefly respond to statements or questions, under state law, matters presented under this item cannot be discussed or acted upon at this time.

INFORMATION ITEM(S) FOR COMMITTEE INPUT, ADVICE AND COUNSEL TO STAFF

1. Greenprint TAC Workshop - Meeting 3

(Ryan Wolfe, SCAG; and Andrew Nguyen & Joerg Tonndorf, Arup)

- TAC Purpose and Process
- Response to Feedback on Draft Data Standards
- Draft Data Standards in Practice
- User Journeys
- Desired Functionality
- Review of Future Engagement Opportunities

(The order of this item will be presentation by staff, comments and discussion with GTAC members, and public comment.)

ADJOURNMENT



AGENDA ITEM 1
REPORT

Southern California Association of Governments
October 30, 2023

To: Greenprint Technical Advisory Committee (GTAC)
From: Ryan Wolfe, Manager of Sustainable and Resilient Development
(213) 630-1527, wolfe@scag.ca.gov
Subject: Greenprint Technical Advisory Committee Workshop - Meeting 3

EXECUTIVE DIRECTOR'S
APPROVAL

RECOMMENDED ACTION:

Information Only – No Action Required

STRATEGIC PLAN:

This item supports the following Strategic Plan Goal 3: Be the foremost data information hub for the region.

EXECUTIVE SUMMARY:

SCAG is in the process of developing the SoCal Greenprint, a web-mapping application to help users make data-driven land use and transportation infrastructure decisions and support conservation investments. Directed by the Regional Council's adopted Regional Advance Mitigation Program Policy Framework, SCAG has established the Greenprint Technical Advisory Committee (GTAC) to advise staff on the development of data policies, governance standards, user guidelines, data selection criteria, and data parameters for the Greenprint tool.

This meeting on October 30th, 2023, is the third of three planned TAC meetings. The objective of the meeting is to share feedback from the previous TAC meeting, how that feedback was used to identify data layers to evaluate using the draft data standards, share the results of that evaluation and next steps for the proposed data layers, and show mock-ups to demonstrate and receive feedback on tool functionality.

This staff report also includes a summary of feedback from focus groups SCAG held in October to get more in-depth feedback from target users of the SoCal Greenprint. The attachments to this staff report include the proposed data layer list (Attachment A) and a memorandum from Arup, the project consultant, that summarizes benchmarks and documents the draft data policies, data selection criteria, data parameters, governance standards, and user guidelines developed for SCAG's SoCal Greenprint tool (Attachment B).

BACKGROUND:

SCAG is in the process of developing the SoCal Greenprint, a strategic web-based mapping tool to inform land use and infrastructure decisions, help users identify priority conservation areas, support advanced mitigation programs, and advance the vision and goals of Connect SoCal 2020, the 2020-2045 Regional Transportation Plan/Sustainable Communities Strategy (RTP/SCS). On October 7, 2021, the SCAG Regional Council (RC) directed SCAG staff to work with a five-member advisory task group of the RC (the RAMP-ATG) to establish a policy framework for advance mitigation in the SCAG region and ensure Greenprint alignment with policy objectives. The RAMP-ATG's Policy Framework directed SCAG to form the Greenprint Technical Advisory Committee (GTAC) to advise staff on the development of data policies, governance standards, user guidelines, data selection criteria, and data parameters for the Greenprint tool. The following is an overview of the purpose and process of the Greenprint TAC:

- The GTAC will provide input and consultation for SCAG staff to develop data policies, governance standards, user guidelines, data selection criteria, and data parameters for the SoCal Greenprint tool;
- The GTAC will inform land use cases and analytical functionality of the tool;
- The GTAC is an advisory body; and,
- Feedback from the GTAC will be presented to the Energy & Environment Committee (EEC) and the Regional Council along with staff recommendations on data policies, governance standards, user guidelines, data selection criteria and data parameters for their review and approval. This will include a clear description of how GTAC feedback informed the recommendations.

Draft Data Standards in Practice

At the previous TAC meeting on August 28th, TAC members reviewed and provided feedback on draft Data Standards to guide the selection and governance of the data sets to be used in the SoCal Greenprint.

In response to TAC feedback, data policy A4 was revised to:

*“Data should be created, used and/or recommended for use by **regulatory** agencies, and other state and federal agencies,”* from

“Data should be created, used and/or recommended for use by permitting agencies, and other state and federal agencies.”

Data policy A7 was revised to:

*“Data will be for informational purposes only and not be identified, qualified, or defined as constraints on future development or **land use**”* from

“Data will be for informational purposes only and not be identified, qualified, or defined as constraints on future development or growth.”

TAC members also expressed the need to ensure data sources are regularly verified and up to date; that the tool include limitations and disclosures for exported data; a post-reporting process for individuals or organizations to comment on what they believe to be discrepancies or inaccuracies in the data. This meeting will include time to further discuss the data update process and how it can be formalized.

The October 30th TAC meeting presentation will include an overview of how feedback from the TAC was used to identify data layers for evaluation and how the draft Data Standards were applied to evaluate those layers, which resulted in the proposed data layer list (Attachment A). It will also provide visual examples of “clickwrap” limitations users must agree to when accessing the tool or exporting data. Mock-up examples of how users can browse for data, create a data overlay, and other functionality aspects will also be reviewed. The meeting will conclude with information on the upcoming beta testing and next steps for advancing the draft standards forward for consideration by SCAG’s Energy and Environment Committee and Regional Council.

Focus Groups

SCAG held three focus groups on October 2nd, 3rd, and 4th, 2023. Participants included staff-level members of the TAC as well as local planning staff from jurisdictions, county transportation commissions, other agencies, and individuals recommended by TAC members who also serve as public officials. Participants in the focus groups included representatives from the City of Anaheim, Western Riverside County Regional Conservation Authority, Orange County Transportation Authority, City of Lancaster, Caltrans, City of Long Beach, City of Highland, Orange County Department of Public Works, City of Irvine, and the City of Los Angeles.

Comments from focus group participants largely reinforced much of the TAC feedback, especially surrounding data policies, themes, and use cases. At each focus group, participants raised the importance of keeping data updated on a regular basis, advocated for data disclaimers and deferring to local agencies for the most accurate data. There was a stated interest in ensuring that regional data is aligned with local data. Participants also expressed that the tool would be useful for grant applications, and provided examples of datasets that were in line with the proposed themes of Agriculture and Working Lands, Environmental Justice and Equity, Habitat and Biodiversity, and Vulnerabilities and Resilience.

FISCAL IMPACT:

This project is funded in SCAG’s Fiscal Year 2023-2024 Overall Work Program under 290-4919.01.



ATTACHMENT(S):

1. PowerPoint Presentation - 2023-10-23_GTAC 3 Slides
2. ATTACHMENT B_Technical Memo
3. Attachment A_Proposed Data Layer List



Greenprint Technical Advisory Committee

Monday, October 30th, 2023 at 1:00 p.m.

For Public Comments, please send an email to: ePublicComment@scag.ca.gov

WWW.SCAG.CA.GOV

AGENDA

- 1 Welcome & Roll Call
- 2 Procedures for Participation
- 3 Public Comment (non agenda items)
- 4 TAC Purpose and Process
- 5 Response to Feedback on Draft Data Standards
- 6 Draft Data Standards in Practice
- 7 User Journeys
- 8 Desired Functionality
- 9 Review of future engagement opportunities
- 10 Public Comment (agenda items)





ROLL CALL

Procedures for Participation

- Agenda-related public comment will take place at the end of the meeting (3:30pm).
- TAC members participating online who have provided addresses may participate in the discussion.
- TAC members who have *not* provided their addresses may provide public comment.

Public Comment Period (*matters not on the agenda*)

This is the time for persons to comment on any matter pertinent to SCAG's jurisdiction that is **not** listed on the agenda. Although the committee may briefly respond to statements or questions, under state law, matters presented under this item cannot be discussed or acted upon at this time.



GREENPRINT TAC PURPOSE & PROCESS

Ryan Wolfe, SCAG

Establishment of a **Technical Advisory Committee**

The RAMP Policy Framework and recommendations from the RAMP-ATG directs SCAG to establish a Technical Advisory Committee to advise on:

Data
Policies &
User
Guidelines

SoCal
Greenprint
Tool's Data
Governance
Standards

Data
Selection
Criteria

Process to
Resolve Potential
Divergent
Perspectives on
SoCal Greenprint
Tool Data

Data
Parameters

Greenprint TAC Overview

TACs at SCAG

- Focused groups convened to work on specific topic areas and provide input to SCAG staff before items are brought to SCAG's Policy Committees or Regional Council.
- Groups fall along a spectrum of more technical to more policy-focused.
- Examples:
 - Modeling Task Force
 - Transportation Conformity Working Group
 - Technical Working Group

Purpose and Process for Greenprint TAC

- The GTAC will provide input and consultation for SCAG staff to develop data policies, governance standards, user guidelines, data selection criteria, and data parameters for the SoCal Greenprint tool.
- The GTAC will inform land use cases and analytical functionality of the tool.
- The GTAC is an advisory body.
- Feedback from the GTAC will be presented to the Energy & Environment Committee (EEC) and the Regional Council along with recommended data policies, governance standards, user guidelines, data selection criteria and data parameters for their review and approval. This will include a clear description of how GTAC feedback informed the recommendations.



REVIEW OF DRAFT DATA STANDARDS

Ryan Wolfe, SCAG

Feedback on Data Policies

- Ensuring data sources are regularly verified and most recent available
- Limitations and disclosures for exported data
- Post-reporting process
- Language updates (see next slide)

Draft Data Standard Language Changes

- A4: Data should be created, used and/or recommended for use by **permitting regulatory** agencies, and other state and federal agencies.
- A7: Data will be for informational purposes only and not be identified, qualified, or defined as constraints on future development or **growth land use**.

Data Update Process

- Periodic updates will include evaluation of existing and potential new data layers
- Proposed updates will be presented to EEC two months prior to tool update to provide sufficient time for feedback
- Reflected in Draft Data Standard D5

Discussion



DRAFT DATA STANDARDS IN PRACTICE

Joerg Tonndorf, Arup

Draft Data Standards

10 of the 18 draft Data Standards can be grouped into:

- Data standards related to the evaluation of datasets, or
- Data standards related to the presentation of datasets

Draft Data Standards - Evaluation

Standard A1: Data must be publicly available, meaning that existing datasets are available online or can be accessed if requested and/or licensed.

Standard A2: Data will consist of the most recent publicly available data and must include a defined set of metadata including information on authorship, geographic unit of accuracy, methodology for data development and anticipated timeline for regular updates.

Standard A3: Draft data will not be included in the tool.

Standard A4: Data should be created, used and/or recommended for use by regulatory agencies, and other state and federal agencies.

Standard A5: Data depicted will not be altered from their original source.

Standard A6: Data will be regionally comprehensive to the extent feasible, unless data is locally important and not available through a regionally comprehensive source. Data gaps will be identified and explained for datasets in the tool to ensure accurate use of the information.

Application of Draft Data Standards to Selected* Layers

Layer Name	Last Updated	A1. Data must be publicly available	A2. Data will consist of the most recent publicly available data & include a defined set of metadata	A3. Data should be finalized (no draft data)	A4. Data should be created, used and/or recommended for use by regulatory agencies	A5. Data will not be altered from original source.	A6. Data will be regionally comprehensive	Include in Greenprint?
California Fault Traces	2022	Yes	Yes – includes most recent data Meets some metadata requirements (others to be updated)	Finalized	Yes – CA Department of Conservation	Unaltered	Yes	Yes
Northern Sierra Nevada Foothill Landscape Blocks	2022	Yes	Yes – includes most recent data Metadata is incomplete	Finalized	Yes – CA Department of Fish and Wildlife	Unaltered	Not in SCAG region	No

*All data layers have been evaluated adopting these standards; only two are listed here for example

Examples of Layers Meeting Draft Data Standard Criteria (by theme*)

Agriculture and Working Lands

- *Farmland Mapping and Monitoring Program (CA Department of Conservation)*

Built Environment

- *State Highway Network (Caltrans)*

Environmental Justice, Equity and Inclusion

- *Environmental Justice Areas (SCAG)*

Habitat and Biodiversity

- *Essential Connectivity Areas (CDFW)*

Vulnerabilities and Resilience

- *National Flood Hazard Layer (FEMA)*

Water Resources

- *Cal Water Hydrologic Areas (CDWR)*

Context

- *County Boundaries (SCAG)*

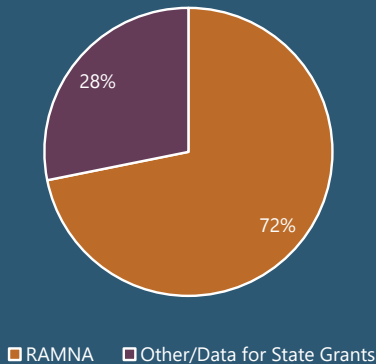
*The organization of data into seven themes is also part of the Draft Data Standards.

Proposed Data Layers Foundation

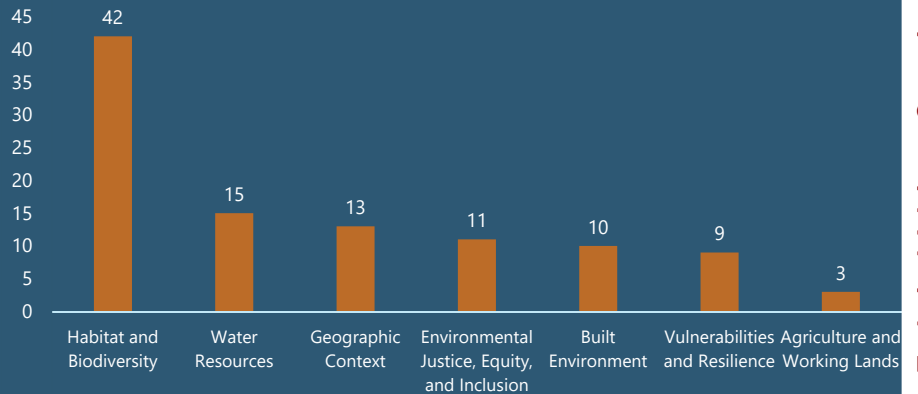
- Caltrans' Regional Advance Mitigation Assessments (RAMNA)
 - Agriculture and Working Lands
 - Built Environment
 - Climate Vulnerabilities and Resilience
 - Environmental Justice
 - Geographic Context
 - Habitat and Biodiversity
 - Water Resources
- Other Layers Useful for State Grant Applications
 - Water and Energy Use Efficiency for Residential, Commercial, and Institutional Projects
 - Wetland Restoration
 - Climate Adaptation and Resilience Program
 - Urban and Community Forestry Program

Layers Meeting Draft Data Standard Criteria

Recommended Data Layers



Number of Data Layers by Theme



*The organization of data into seven themes is also part of Draft Data Standards.

Draft Standard A2: Metadata

Example of Complete Metadata: CA Farmland Mapping and Monitoring Program (FMMP)

CA Important Farmland: Most Recent

California Important Farmland: Most Recent

Private Member
California Department of Conservation

Map Service

View Map Download More

Summary

The Farmland Mapping and Monitoring Program (FMMP) provides data to decision makers for use in planning for the present and future use of California's agricultural land resources. The data is a current inventory of agricultural resources. This data is for general planning purposes and has a minimum mapping unit of ten acres.

This dataset may be a mix of two years and is updated as the data is released for each county. For example, one county may have data from 2014 while a neighboring county may have had a more recent release of 2016 data. For specific years, please check the service that specifies the year, i.e. California Important Farmland: 2016.

Established in 1982, Government Code Section 65570 mandates FMMP to biennially report on the conversion of farmland and grazing land, and to provide maps and data to local government and the public.

The Farmland Mapping and Monitoring Program (FMMP) provides data to decision makers for use in planning for the present and future use of California's agricultural land resources. The data is a current inventory of agricultural resources. This data is for general planning purposes and has a minimum mapping unit of ten acres.

[Read Less](#)

Details

- Dataset**
Feature Layer
- June 7, 2016**
Info Updated
- Biannually**
Data Updated: September 28, 2023
- June 7, 2016 at 12:00 AM**
Published Date
- Records: 172,439**
[View data table](#)
- Public**
Anyone can see this content
- Custom License**
[View license details](#)
- Relevant Area**

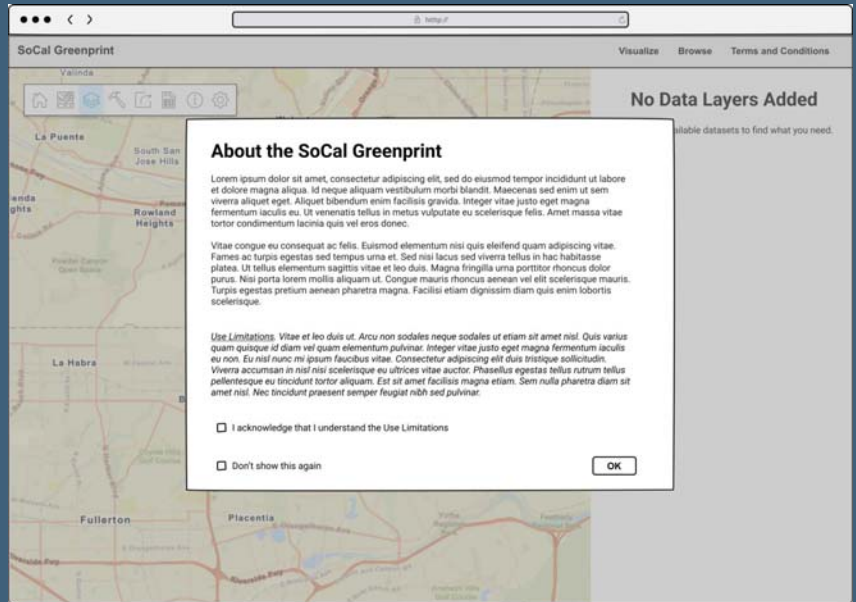
Discussion

Draft Data Standards - Presentation

- **Standard A7:** Data will be for informational purposes only and not be identified, qualified, or defined as constraints on future development or land use
- **Standard A8:** Data will be for informational purposes and will not be adopted by SCAG and are not an expression of regional policy.
- **Standard B1:** To convey limitations and foster its proper use as well as emphasize to users that the SoCal Greenprint tool is for informational purposes only with no legal effect on land-use decisions made by local agencies or property owners, the final, publicly available version of the tool will include a “popup screen” displaying disclosure language and will require user acknowledgment of the data’s limitations
- **Standard B2:** Prior to using the tool, users will be required to acknowledge and agree to the terms of use, containing the disclosures and data limitations, through a “clickwrap” statement that is reasonably and prominently visible to all users. This will require the active, affirmative acknowledgement of each user; and will be written to be easily understood by the average user.

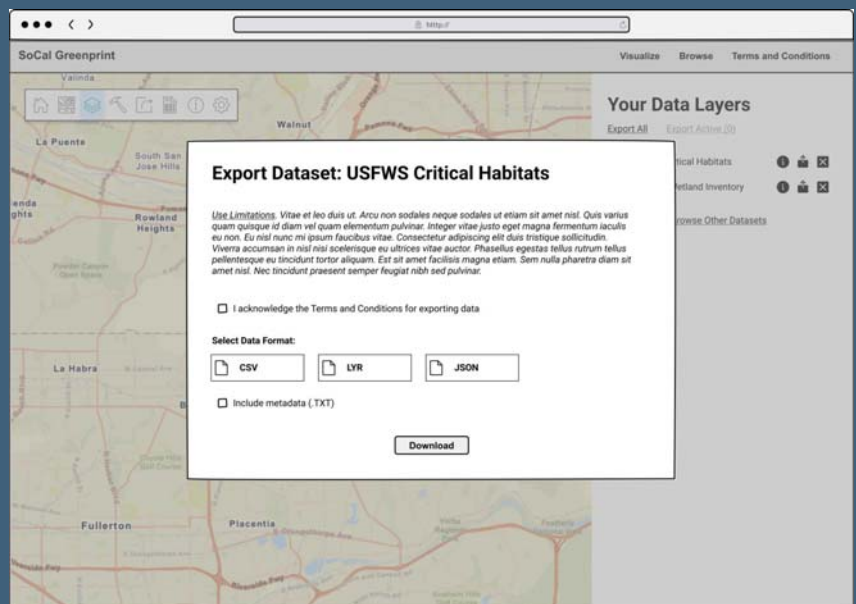
Mockup Example: Clickwrap

Users will be asked to review and agree to use limitations via a clickwrap which will display whenever the Greenprint is accessed by a user.



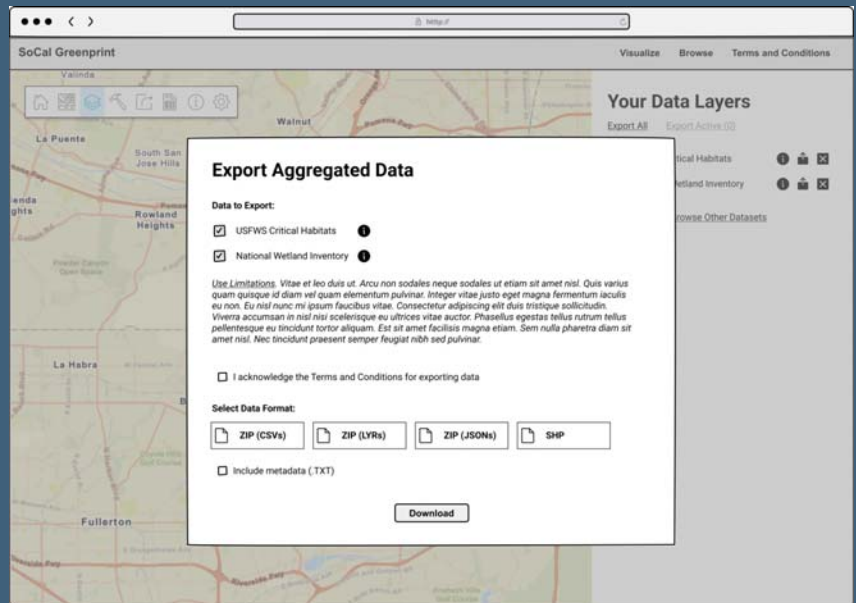
Mockup Example: Exporting Data

Users will also be prompted with a clickwrap they must agree to prior to exporting data.



Mockup Example: Exporting Aggregated Data

Users will be able to export individual datasets and multiple aggregated datasets at once. This must also be covered by a clickwrap.



Disclaimer Principles*

Based on TAC feedback staff has identified the following preliminary principles:

- Data is for informational purposes only
- All maps and reports created with the tool are purely informational
- Tool includes regional data and local data may be more detailed
- *What are we missing?*

**TAC feedback will inform staff development of draft and final disclaimer language*

Discussion



BREAK



DESIRED FUNCTIONALITY

Andrew Nguyen, Arup

31

Requirements for Greenprint from TAC #1

The Greenprint will be a strategic web-based mapping tool that:

- Is easily accessible
- Uses data validated to meet defined standards
- Helps inform advance mitigation programs
- Helps identify opportunities around conservation and better land-use

Focus groups

- SCAG and Arup conducted three focus groups with potential users from cities, counties, and county transportation commissions to understand:
 - User needs
 - User goals
 - Use cases
 - Relevant data
 - High-level function requirements
 - User experience expectations
 - Relevant tools

33

Focus groups - Desires

- From the focus groups, users seemed to desire the following from the Greenprint:
 - Ability to locate areas for protection or conservation
 - Have awareness of existing natural resources, species, and vegetation
 - Being able to plan and execute mitigation strategies/projects
 - Having centralized access to reliable, free, and easy-to-use data
 - Save time and money from having to outsource work to external parties
 - Review submitted documents and projects more efficiently
 - Author better grant applications and acquire funding
 - Review metadata of datasets and share them with others

34

Focus groups – Key questions/feedback

- From the focus groups, users seemed to have the following key questions/feedback about the Greenprint:
 - Some participants still need further clarity regarding what the Greenprint is capable of. The Greenprint should include information around its purpose and background alongside use limitations in the clickwrap
 - In many cases, broader regional datasets on the Greenprint will not be as detailed as local data. The Greenprint should clearly and frequently indicate this and the importance of connecting with local agencies for local data
 - Some areas/cities already have their own centralized data programs and environmental mapping tools which users should be asked to refer to where applicable

35

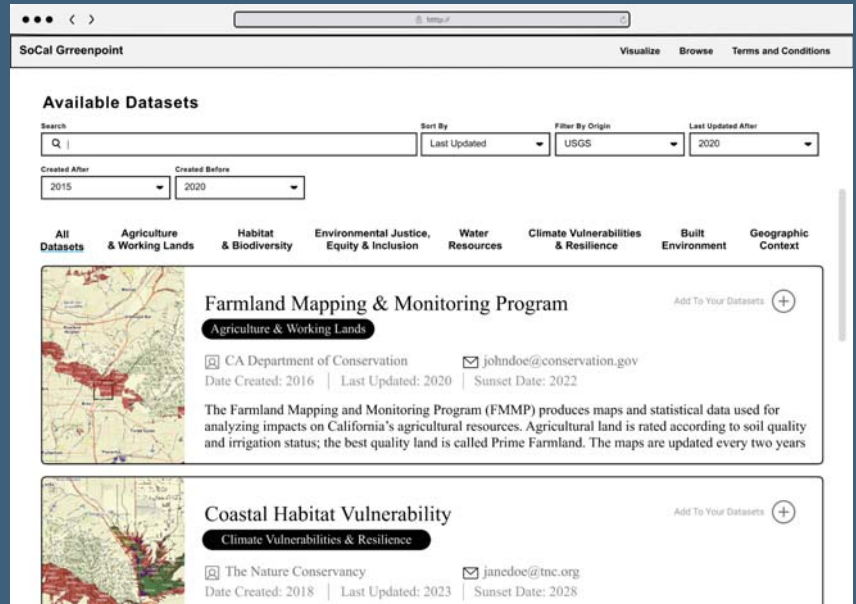
Discussion

36

Mockup Example: Browsing for Data

Users will be able to locate and discover relevant datasets for their use cases.

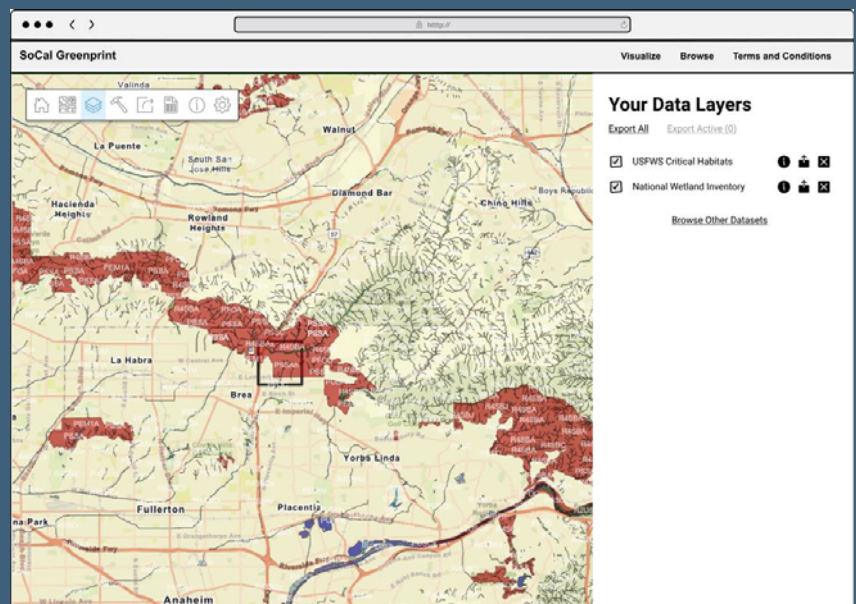
Incorporated data will comply with data standards related to evaluation (Standards A1-A6)



37

Mockup Example: Data Overlay

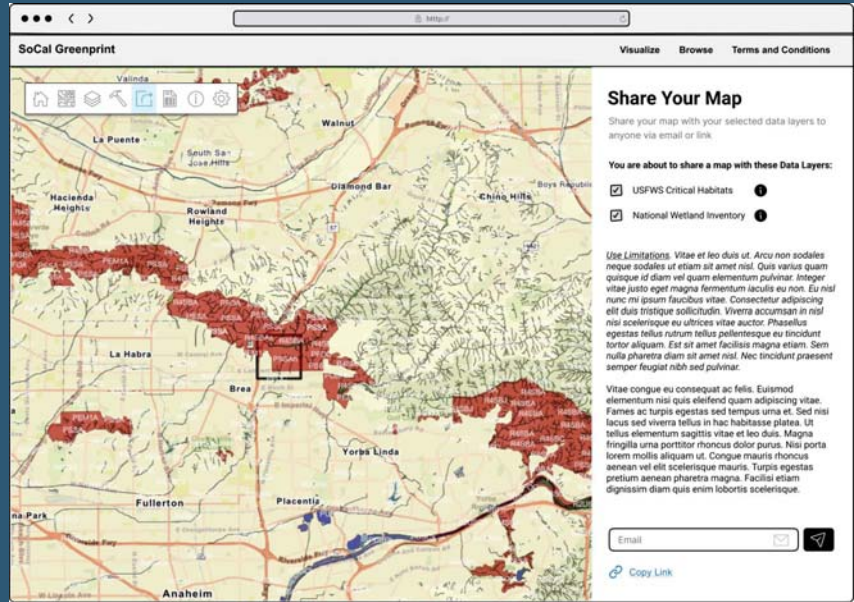
Users will be able to collect and overlay datasets for visualization purposes.



38

Mockup Example: Data Aggregation & Sharing

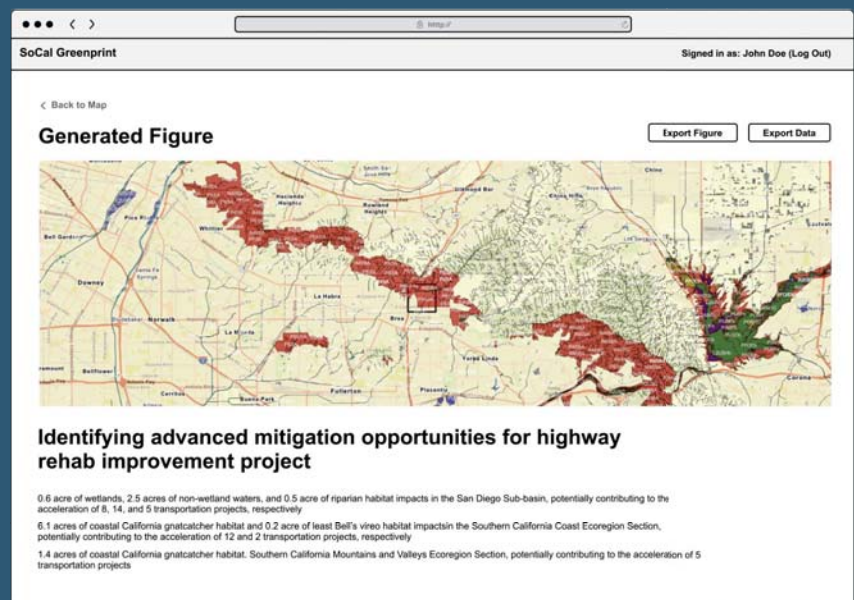
Users will be able to overlay and visualize aggregated datasets. These aggregations can be shared with others as examples or for their own use.



Mockup Example: Functional Elements

Visualizations and data aggregations from the Greenprint could be used for potential "functional elements" such as:

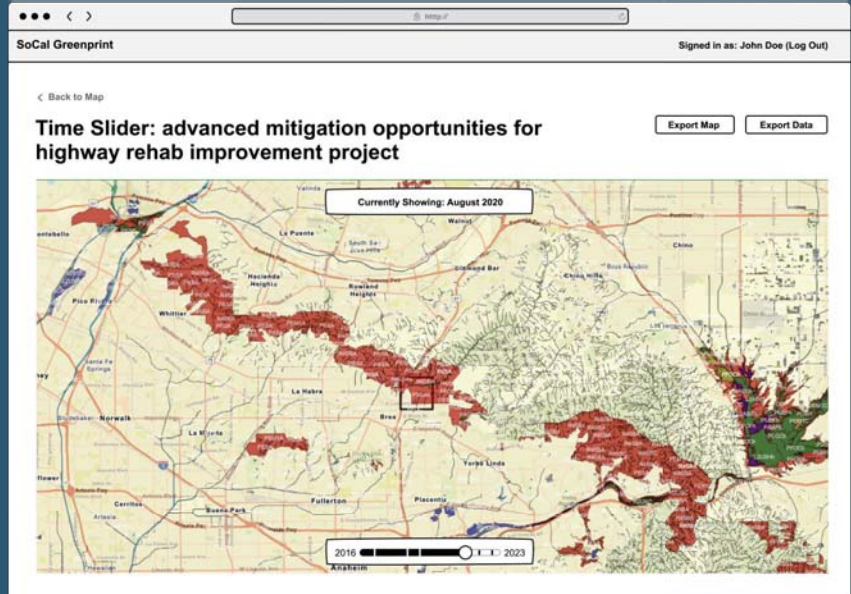
- A printing feature to export maps as images and PDFs



Mockup Example: Functional Elements

Data and aggregations from the Greenprint could be used for potential “functional elements” such as:

- A time slider to discern changes over a given time period



41

Seeking Feedback: Potential Functional Elements

Other “functional elements” may include but are not limited to:

- A lasso tool to see data outputs for a user-defined project area
- A dashboard of meaningful information
- A module allowing the export of pre-configured reports

42

Use Cases

Based on stakeholder feedback, proposed features can address use cases for the Greenprint such as:

1. Identifying project mitigation opportunities
2. Storytelling for grant applications
3. Identifying lands of high ecological significance

Discussion

Identifying project mitigation opportunities

Feature	Addressing the Use Case
Browsing for Data	Users can filter datasets created by local or regional agencies with the level of granularity they need.
Data Overlay	Users can adjust transparency of layers to highlight key areas.
Data Aggregation and Sharing	Users can export their data aggregations for reports, publication and/or tool development.
Functional Elements	<ul style="list-style-type: none"> - Preconfigured report generation - Data join functionality

Storytelling for grant applications

Feature	Addressing the Use Case
Browsing for Data	Users can browse under specific themes to find data relevant to their application.
Data Overlay	Users can toggle layers on and off to tell different narratives.
Data Aggregation and Sharing	Users can generate a URL to share their datasets and overlays as part of the grant application.
Functional Elements	<ul style="list-style-type: none"> - Story maps site - Print tool

Identifying lands of high ecological significance

Feature	Addressing the Use Case
Browsing for Data	Users can search for data around climate resilience, critical habitats.
Data Overlay	Data found by users can be overlaid to show areas with high risk of negative impact.
Data Aggregation and Sharing	Users can save and share the datasets they aggregate for use on other similar projects.
Functional Elements	<ul style="list-style-type: none">- Lasso tool- Critical areas dashboard

Discussion



BETA TESTING

Andrew Nguyen, Arup

Beta testing

- 10 representatives, each representing core tool users
- Initial review of the tool at the 90% complete stage through pre-defined use cases
- Two-week period for users to test by going through the use-cases, this should take ~2 hours per person
- 1-hour feedback session + survey will be conducted to collect feedback and bug reports from testing period
- To be done virtually

Next Steps

January 2nd, 2024:

- Present Draft Data Standards to SCAG Energy and Environment Committee for consideration

February 1st, 2024:

- Present Draft Data Standards to SCAG Regional Counsel for consideration

Summer 2024:

- Perform Beta Testing and complete tool development

51

Closing Thoughts

52



THANK YOU

scag.ca.gov/greenprint

For questions, please contact:
scaggreenregion@scag.ca.gov

Greenprint Technical Advisory Meeting

Public Comments

Members of the Public:

- **Can provide verbal or written comments.**
- **Are encouraged to submit comments to ePublicComment@scag.ca.gov** by 5 p.m. the day before the meeting.
- **Can address the committee** in real-time via zoom or by phone (*2 min. allotted*). When the item is called use the **raise your hand function (Zoom) or *9 (phone)** and wait for your name or phone number to be called.

SoCal Greenprint

Draft Proposed Data Standards Technical Memo

1. Executive Summary

The intent of the SoCal Greenprint is to develop a strategic web-based conservation tool that will be an easily accessible resource that helps to inform advance mitigation programs at the local level, and helps municipalities, conservation groups, developers, and researchers prioritize lands for conservation. In summary, the tool is intended to provide the information needed to help cities, counties, and transportation agencies to inform land use and transportation infrastructure decisions and conserve natural and farmlands.

The Draft Proposed Data Standards for the SoCal Greenprint adopt a “start small” approach, with the Caltrans Regional Advance Mitigation Needs Assessment (RAMNA) serving as the foundation for the SoCal Greenprint data approach. This document also includes a review of other established conservation web mapping applications, including data standards implemented by each. An evaluation comparing these approaches to the Draft Proposed SoCal Greenprint Data Standards finds that the SoCal Greenprint will surpass other relevant available web mapping application standards and guide the use of the tool for its intended purpose.

2. Advanced Mitigation and SoCal Greenprint Data Layers

Caltrans developed the Advanced Mitigation Program (AMP) through the Road Repair and Accountability Act of 2017 to accelerate transportation project delivery and work with stakeholders and partner agencies to protect natural resources through project mitigation.

The AMP is a multi-step advance mitigation planning process, which starts with an assessment of needs, identification of appropriate regions, and continues with advancing mitigation concepts and receiving approval for funding. The first step in the process was a Statewide Advance Mitigation Needs Assessment (SAMNA), which is a GIS-based assessment that analyzes the impact of projects identified in the long-range transportation plans on natural resources. Following the SAMNA, the AMP coordinates with Caltrans Districts to develop a Geographic Area of Interest (GAI), which identifies specific areas that would benefit the most from an advance mitigation approach. The RAMNA builds on the needs identified in the SAMNA for a given GAI to maximize the environmental and conservation benefits from potential mitigation actions and provides the Caltrans Districts with sufficient information to conceptualize advance mitigation projects that can be submitted for the Director’s Approval. Following the RAMNA, concepts are further analyzed, refined, and submitted for Director’s approval.

One of the purposes of the SoCal Greenprint is to be a pre-planning tool to help users identify possible project mitigation opportunities like the functionality provided by the Caltrans Advance Mitigation Program (AMP). Also, as demonstrated below (refer to [Section 3. Benchmarks](#)), the data adopted for AMP follows rigorous data governance principles which are closely aligned with the Greenprint Draft Proposed Data Standards (refer to [Section 4. Draft Proposed Data Standards](#)).

The SoCal Greenprint tool would include layers currently used in the RAMNA to provide stakeholders an easily accessible geographic information systems (GIS) tool that features information on critical habitats,

socioeconomic information, aquatic resources, and climate risks, among others specific to the SCAG region.

3. Benchmarks

Arup and Sapphos reviewed other data management best practices, environmental data tools, and policy frameworks to inform the Draft Proposed Data Standards for the SoCal Greenprint tool. Leveraging benchmarks and other case studies is an important aspect in the development of data standards because they provide a baseline framework for how other organizations have incorporated data standards that are supportive of similar tool objectives as the Greenprint. They also identify areas for improvement where the Greenprint Draft Proposed Data Standards can support and advance best practices in data management. Benchmarks are summarized in subsequent sections.

The following policies and tools were reviewed:

- Caltrans' Environmental Viewer
- Bay Area Greenprint
- Pathways to 30x30

Relevant project/policy objectives were summarized, in addition to any publicly available data policies or standards that informed data selection, review, and cleaning. Additionally, where relevant, map features or functionalities that operationalize data standards were listed to inform potential user features that can be implemented in the SoCal Greenprint.

Caltrans Environmental Viewer

The Caltrans Environmental Viewer is a web-based GIS viewer tailored to the needs of the environmental community at Caltrans. The goals of the website are to provide quick access to environmental spatial information to assist with spatial analysis and to provide information regarding resources that are located within the boundaries of a planned project. The Viewer was developed and maintained by Caltrans Headquarters Division of the Environment Analysis GIS staff.

Data layers are organized by the following themes:

- General: Environmental
- General: Coastal
- Biology: Wildlife
- Biology: Fish
- Biology: Vegetation
- Climate: CalFIRE
- Climate: NOAA SLR
- Climate: USGS CoSMoS SLR
- Climate: Groundwater SLR
- Climate: CT VA
- Climate: CT APR
- Cultural: Ethno
- Cultural: Cultural Place
- Cultural: Communities
- HazWaste: Mineral Hazards

- Air: Air Quality
- Water
- Agencies: Federal
- Agencies: State
- Agencies: Local
- CT: SB1 Program
- CT: Transportation
- CT: Broadband
- CT: Others

Governance Standards

The Caltrans Environmental Viewer was developed and tailored for the environmental community at Caltrans. It is developed and maintained by the HQ Division of Environmental Analysis GIS staff. All data layers are linked directly to the Environmental Viewer via an automated web service (referred to as a “REST API”), facilitating regular data updates as layers are refreshed or modified in its original service. The Environmental Viewer includes a pop-up screen and a requirement to “accept” agreement to the terms listed, which specifies liability and other terms of use, in order to access the web application.

“The maps and data are made available to the public solely for informational purposes. Information provided via the Caltrans' Environmental GIS Viewer website is accurate to the best of our knowledge and is subject to change on a regular basis, without notice. While Caltrans makes every effort to provide useful and accurate information, we do not warrant the information to be authoritative, complete, factual, or timely. Information is provided on an "as-is" and as "as-available" basis. The Department of Transportation is not liable to any party for any cost or damages, including any direct, indirect, special, incidental, or consequential damages arising out of, or in connection with, the access or use of, or the inability to access or use, the Site or any of the Materials or Services described herein.”

Data Selection

Although no clear data selection policies, criteria, or parameters are publicly available, data layers included in the tool are all sourced from state or federal agencies including Caltrans, CA Department of Fish and Wildlife, the California Coastal Commission, CA Department of Conservation, USDA Forest Service, U.S. Fish and Wildlife Service, CalFire, FEMA, NOAA, USGS, among others. The data is linked via an Esri Feature Service and is all publicly available.

Tool Features

The Environmental Viewer is a web-based application that includes viewable layers categorized by theme. Users can select data layers and view geospatial data. The web application includes a pop-up screen with terms and conditions. Other features include: a table viewer, download option, link to feature service, print and focus print, and additional accessibility features are a work in progress.

Summary of Takeaways

- All data available within the tool is publicly available and linked to source via a REST API.
- Pop up screen and terms of use clearly state liability, the objective of the tool, and limitations of its use
- Data selection appears to inform, broadly, environmental analysis without explicitly linking to a policy requirement e.g., CEQA, NEPA, etc.

Bay Area Greenprint

The Bay Area Greenprint, initially released in June 2017, is a tool that maps natural and agricultural lands data. It was developed by the Nature Conservancy, the Bay Area Open Space Council, American Farmland Trust, Greenbelt Alliance, and Green Info Network. The web application includes data that supports nine values and benefits including:

- Food production
- Water supply
- Water quality
- Water hazard and risk reduction
- Carbon storage and air quality
- Outdoor recreation
- Prioritized habitats
- Habitat connectivity
- Species and habitats that might require mitigation.

All data included within the tool contains a web map, a consolidated data portal, and associated metadata for natural resources and agriculture in the Bay Area. The input data layers have been processed into a “fishnet” for reporting purposes. A fishnet represents a grid of 30-meter square polygons across the region, where each grid cell contains values for many different metrics that were synthesized together. When a report is generated, it selects the correct grid cells (those which were selected by the end user) and sums, averages, or aggregates the values for each of the metrics.

Governance Standards

The Bay Area Greenprint was developed to facilitate the incorporation of natural and agricultural values and information into land use and transportation planning, and to create a shared language among planners, policymakers, NGOs, and others to illustrate the case for conservation in the Bay Area. **No explicit governance standards were publicly available**, and no terms of use were available within the web application. The Greeninfo Network is responsible for the maintenance of the web application and data is updated periodically, as identified in the version history with versions updated in 2017, 2018, 2019, 2020, twice in 2022, and once in 2023.

Data Selection

No published data policies or parameters were identified through documentation of the Bay Area Greenprint. Most of the data used in the Greenprint is freely available and accessible, although some datasets require a license (such as the California Natural Diversity Database), some were exclusively shared with the Bay Area Greenprint Team and are not yet publicly available, and some are compound datasets created by the Bay Area Greenprint team, such as Important Habitat for Threatened and Endangered Vertebrates.

Downloaded data includes a data dictionary for the fishnet output, including the glossary reference, definition, field name, unit, math to be performed, and theme.

Map Features

The Bay Area Greenprint includes clear version history that details which datasets or layers were updated, available on the Greenprint webpage. For each layer, a pop-up information box includes a

description of the data. End users have the flexibility to adjust the opacity of the data layer. The tool also includes a Mitigation Wizard which estimates impacts and identifies mitigation opportunities for a user-defined project area.

Summary of Key Takeaways

- Although no clear data policies were identified to inform data selection, the majority of the data included in the Bay Area Greenprint was publicly available and informed by consultation with public agencies and technical experts.
- Data is updated at irregular intervals, with information related to data layer updates available in a version history through the data glossary. There is no clear metadata providing information about data updates.
- Data layers and methods are easily accessible and downloadable within the web application
- The Bay Area Greenprint does not include any disclaimers or notification regarding the data, its potential limitation and how it should be used.

Pathways to 30x30

The California Natural Resources Agency (CNRA) has authority over this initiative, in collaboration with other state agencies and stakeholders. Key objectives of the 30x30 strategy include expanding the enduring conservation of California's lands and coastal waters to protect and restore biodiversity; expanding access to nature; and mitigating and building resilience to climate change. Coordinating with regional and local partners to identify areas that protect biodiversity, advance climate action, and expand equitable access maximizes the benefits of new lands protected under 30x30.

California state agencies worked with Environmental Systems Research Institute, Inc. (ESRI) and GreenInfo Network to ensure that California's 30x30 initiative is built upon a foundation of solid data, creating a suite of interactive GIS mapping and visualization applications. Data for this initiative is open sourced and centrally maintained by California Nature (CA Nature), a web-based and publicly available geographic information system (GIS) supporting state, regional and local implementation.

Challenges experienced by this tool included connecting partners to achieve large-scale conservation, working with imperfect data, and ensuring adequate and continuous stewardship funding. Although many partners were interested in joining the 30x30 initiative's collaborative efforts, it proved difficult to effectively connect partners across geographic boundaries and sectors. CNRA formed the 30x30 Partnership to bring together local and regional colleagues and create new partnerships to spearhead the initiative's work efforts. Organizing the 30x30 Partnership was a successful method to identify and link local efforts to increase the scale of conservation.

State agencies are coordinating funding and monitoring efforts through California's AB 32 Scoping Plan update and California's Fifth Climate Assessment to enhance ongoing learning and the adaptive management of conserved landscapes. CNRA's new Resources Agency Project Tracking and Reporting system captures investment outcomes using performance-based criteria, which is helping inform management and funding decisions to strategically enhance California's highest-need areas. To improve the accuracy and accessibility of the data and information being used, CNRA partnered with GreenInfo Network to collect and refine conservation areas data from across California. Through a systematic review and updates to the tool, land conservation data statewide has improved in accuracy and accessibility.

This initiative's quality assurance procedure requires a continuous evaluation of core assumptions, planning principles, and strategies to adapt in the face of a changing climate. CNRA received \$250,000 in the 2022–2023 California Budget Act to maintain and update CA Nature. CNRA continues to partner with GreenInfo Network to identify and refine the 30x30 Conservation Areas database. A new toolkit is under development to improve how users can report and update information on conserved lands to be counted towards the initiative's goal. The quality assurance of this data takes into consideration potential outcomes to aim for; how and when to shift course, with inclusion of integrated tribal knowledge; and inclusion in decision-making processes.

The GIS applications and underlying data have proven effective in tracking progress toward the initiative's goal and are widely used by partners to identify opportunities for 30x30 conservation projects. Updates include improvements to the California Protected Areas and California Conservation Easement Databases to increase tracking of acres conserved, and a toolkit to help partners better understand and record how future conservation projects fit into 30x30 Conservation Areas.

Summary of Key Takeaways:

- For the published GIS database, data collected was reviewed and improved in terms of accuracy and accessibility of conservation data at the statewide level.

Benchmarks Conclusions

- The tool and policy benchmarks summarized that other organizations have primarily identified publicly available data, and data that is developed by, or in partnership with local, state, and federal agencies for use in conservation planning and other advanced mitigation programs.
- For some benchmarks, like Pathways to 30x30, a systematic review of input layers has already been conducted and data has been improved as part of the tool or map development process. Other tools, like the Bay Area Greenprint, post-process input data to develop indices or to aid in mitigation implementation.
- Some benchmarks, like Caltrans Environmental Viewer, link directly to source information where available via a REST API, expediting regular data updates.
- Some benchmarks, like Caltrans' Environmental Viewer include terms of use or disclaimers that specify how the data should be used.
- All benchmarks reviewed sought to increase the transparency and accessibility of data used to inform environmental analysis.
- However, no benchmarks reviewed have implemented data requirements that are as robust and comprehensive as the draft requirements proposed for the SoCal Greenprint.

4. Draft Proposed Data Standards

Data policies, governance standards, user guidelines, data selection criteria, and data parameters (referred to as Draft Proposed Data Standards throughout the Greenprint TAC process") are important data management best practices that ensure that data is consistent, trustworthy, and secure. They also serve to define the rules and procedures for how the data should be used, accessed, shared, and protected, improving the quality of the data and discouraging misuse. Data requirement types are defined in Table 1.

Table 1 Data Standards Types and Definitions, Source: RAMP-ATG

Type	Incorporation	Definition
Data Policy	Data Selection	Data Policies address the requirements for data inclusion in the SoCal Greenprint so that the tool aligns with the RAMP Policy Framework.
Data Selection Criteria		Data selection criteria informs how data is selected for inclusion in the SoCal Greenprint.
Governance Standard		Governance standards address how SCAG will convey the limitations of data usage.
User Guideline	Tool Features	User guidelines describe how the tool will be accessible, consistent with the Connect SoCal 2020 PEIR mitigation measure, the SoCal Greenprint should be web-based and easily accessible for municipalities, transportation agencies, researchers, developers, and conservation groups.
Data Parameter		Data parameter requirements address how the data in the SoCal Greenprint will be documented & how user limitations for each data set will be conveyed. Consistent with SCAG’s past and current practice, all data layers included in the SoCal Greenprint will feature individual background information on methods, limitations, authorship, as well as guidance on their proper use.

Draft Data Policies

The Draft Data Standards establish the requirements for data inclusion in the SoCal Greenprint so that the tool meets its objectives, aligns with the RAMP Policy Framework and takes account of feedback from the TAC.

- A1. Data must be publicly available, meaning that existing datasets are available online or can be accessed if requested and/or licensed.
- A2. Data will consist of the most recently publicly available data and must include a defined set of metadata including information on authorship, geographic unit of accuracy, methodology for data development and anticipated timeline for regular updates.
- A3. Draft data will not be included in the tool.
- A4. Data should be created, used and/or recommended for use by regulatory agencies, and other state and federal agencies.
- A5. Data depicted will not be altered from their original source.
- A6. Data will be regionally comprehensive to the extent feasible, unless data is locally important and not available through a regionally comprehensive source. Data gaps will be identified and explained for datasets in the tool to ensure accurate use of the information.
- A7. Data will be for informational purposes only and not be identified, qualified, or defined as constraints on future development or land use.
- A8. Data will be for informational purposes and will not be adopted by SCAG and are not an expression of regional policy.

Draft Governance Standards

The Draft Proposed Data Standards also establish governance requirements to address how users will be informed about the limitations of the Greenprint and provided data.

- B1. To convey limitations and foster its proper use as well as emphasize to users that the SoCal Greenprint tool is for informational purposes only with no legal effect on land-use decisions made by local agencies or property owners, the final, publicly available version of the tool will include a “popup screen” displaying disclosure language and will require user acknowledgement of the data’s limitations; and
- B2. Prior to using the tool, users will be required to acknowledge and agree to the terms of use, containing the aforementioned disclosure and data limitations, through a “clickwrap” statement that is reasonably and prominently visible to all users. This will require the active, affirmative acknowledgement of each user and will be written to be easily understood by the average user.

Draft User Guidelines

One Draft Proposed Data Standard establishes the user guidelines that describe how the tool will be accessible, consistent with the Connect SoCal 2020 PEIR mitigation measure, the SoCal Greenprint should be web-based and easily accessible for municipalities, transportation agencies, researchers, developers, and conservation groups.

- C1. The SoCal Greenprint will be web-based and easily accessible.

The Greenprint User Guideline will be developed following the specification of the Greenprint web-based application.

Draft Data Selection Criteria

There are also Draft Proposed Data Standards that establish the selection criteria for how data is selected for inclusion in the SoCal Greenprint, how it is categorized, and how it will be updated.

- D1. SCAG staff will prioritize selection of data accessible through the tool by rigorously applying the foregoing data policies, governance standards, and user guidelines.
- D2. SCAG staff shall defer to feedback from regulatory agencies, and other state and federal agencies on the inclusion of particular datasets in the tool.
- D3. Datasets will be selected based on their value in supporting land use and transportation decision-making for local agencies, and regional advance mitigation.
- D4. Data will be organized in seven thematic areas, which are aligned with feedback from county transportation commissions and local planning needs in support of RAMP:
 - Agriculture and Working Lands
 - Habitat and Biodiversity
 - Water Resources
 - Built Environment
 - Environmental Justice, Equity, and Inclusion
 - Climate Vulnerabilities and Resilience
 - Geographic Context
- D5. The Greenprint tool will include a data update process. The process will include legal review of data layers under consideration to ensure they abide by the adopted data standards and then advanced to the Energy and Environment Committee (EEC) for review. It will also include a review of exiting data sets to verify whether they continue to meet the adopted standards.

Draft Data Parameter Requirements

Additionally, two Draft Proposed Data Standards establish the data parameter requirements for how the data within the SoCal Greenprint will be documented and how user limitations for each data set will be conveyed. Consistent with SCAG's past and current practice, all data layers included in the SoCal Greenprint will feature individual background information on methods, limitations, authorship, as well as guidance on their proper use, including:

- E1. The SoCal Greenprint shall feature a glossary and methods section that will provide full transparency to users on data elements featured, and will include:
 - Narrative definitions that cite the data sources, explain the data in accurate and user-friendly terms, and offer guidance on how the information should be used.
 - A description of the data's methodology, reporting framework, known data gaps, and processing methods used to develop the data.
 - Dataset names and URLs of original data sources.
 - Data creation date and anticipated update schedules; and
 - Geographic constraints identifying the geographic unit of accuracy for the dataset. In some instances, data is accurate at larger areas but is not accurate when zoomed in to a smaller geography. For these instances, users will not be able to view data in finer detail than the minimum level of geographic accuracy, which will be documented in the tool.
- E2. Consistent with SCAG's data policy, layers will include metadata consistent with the Geospatial Metadata Standards and Guidelines established by the Federal Geographic Data Committee (FGDC):
 - Identification information (originator, publication date, title, abstract, purpose, time period for content, currentness, progress, maintenance, etc.).
 - Data quality information (attribute accuracy, completeness, positional accuracy, etc.).
 - Spatial data organization information (indirect spatial reference for locating data without using coordinates).
 - Entity and attribute information (detailed description of dataset, overview description, attribute domain values, known data gaps, etc.).
 - Distribution information (contact information for the individual or organization that distributes the data, a statement of liability assumed by the distributing individual or organization) and,
 - Metadata reference information (date metadata was written, contact information for the metadata author, metadata standard, metadata access constraints, metadata use constraints.).

5. Summary of Data Selection Process

The Draft Proposed Data Standards guide the process for data selection. Given the complexity of these draft standards, it would be difficult to evaluate them all at once. The process shown in Figure 1 introduces the step-by-step process that has been used for applying the Draft Proposed Data Standards to evaluate data layers. This approach provides a consistent process for evaluating datasets. It also helps with excluding datasets based on criteria or policies that are easier to assess first before a more detailed evaluation.

The initial data list included 1) data layers identified by Caltrans' in their SAMNA/RAMNA process and 2) data layers that can support grant applications for State of California grants. This focused the draft data

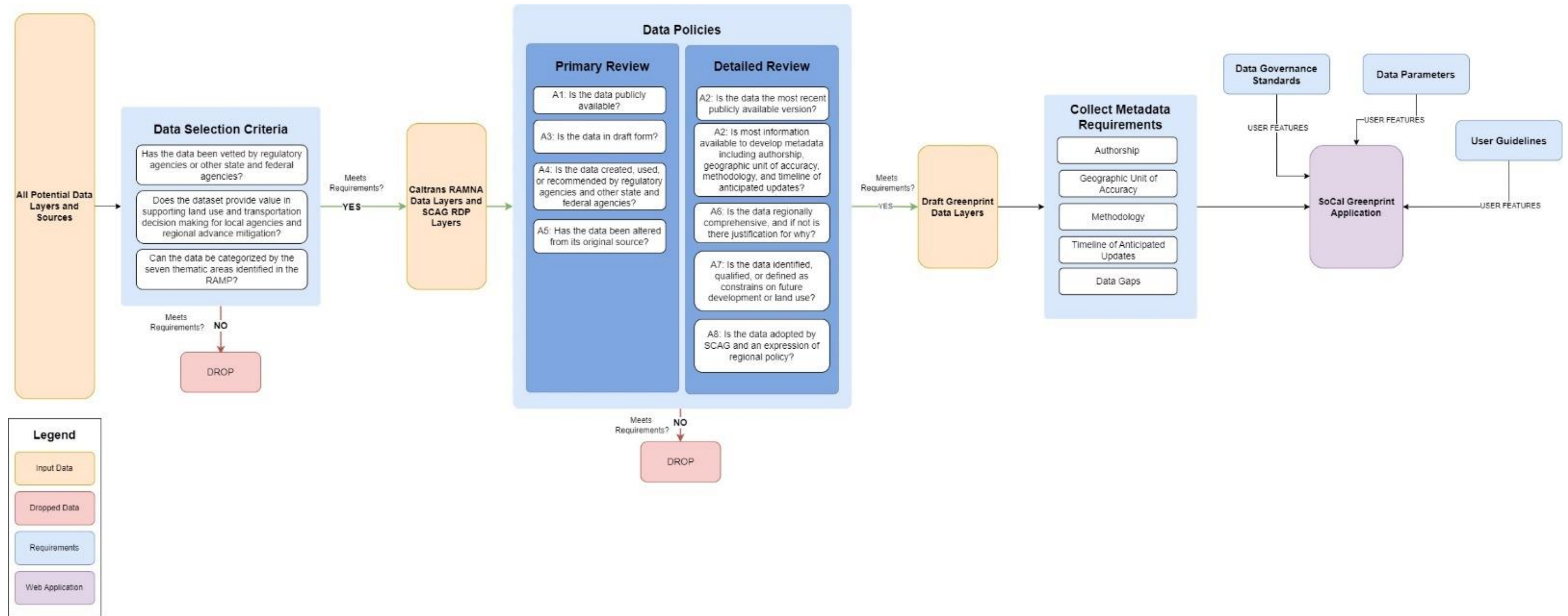
layer list to those data items that have been developed and vetted in consultation with other regulatory agencies.

With that list of SAMNA/RAMNA layers and other data layers that can support grant applications, Draft Data Policies (Draft Proposed Data Standards A1-A8) were applied. Primary review included screening for whether the data layers are publicly available, are in draft or final form, if it was created, used, or recommended by regulatory agencies and other state and federal agencies, or if it has been altered from its original source. Data layers that did not meet these primary Draft Proposed Data Standards were dropped from the draft data list.

A detailed review was then applied to the draft data layers by collecting information related to whether the data is the most recent publicly available version, if required metadata is readily available or needs to be collected (including authorship, geographic unit of accuracy, methodology, and timeline of anticipated updates). This detailed review also included information gathering related to if the data is regionally comprehensive.

The application of these Draft Proposed Data Standards results in a first draft SoCal Greenprint data layer list. Once the data layers have been reviewed and finalized, metadata requirements are to be collected, and user features related to the Draft Data Governance Standards, Data Parameters, and User Guidelines are incorporated into the UI/UX of the proposed Greenprint tool.

Figure 1 Application of Data Requirements to Draft Data Layers



6. Next Steps

Informed by the RAMP, TAC input, and benchmarking exercise, the Draft Proposed Data Standards have been refined. These Standards were applied to a draft data layer list, sourced from Caltrans' RAMNA layers and other layers useful for State of California grant applications, to identify which data does not meet the draft requirements. Most of this draft data layer list complies with the Draft Proposed Data Standards, with the exception of layer metadata where there will be a need to collect additional information. (notably frequency of anticipated data updates). Generally, it is anticipated that metadata will be able to be updated and the draft data layer list is representative of the data layers that are well-positioned to be integrated into the SoCal Greenprint tool.

Once a final draft data layer list is established, metadata requirements will be applied, and data will be republished. The Draft Proposed Data Standards will be operationalized in the proposed user features that are presented in draft wireframes at the third meeting of the Greenprint Technical Advisory Committee.

ID	Type	Greenprint Theme	Layer Name	Feature Name	Source	Description	Source URL	A1: Data must be publicly available . . .	A2: Data will consist of the most recent publicly available data and must include a defined set of metadata including information on authorship, geographic unit of accuracy, methodology for data development and anticipated timeline for regular updates. *Most layers include some but not all metadata requirements. Further information will be gathered where available.	A3: Draft data will not be included in the tool.	A4: Data should be created, used and/or recommended for use by regulatory agencies, and other state and federal agencies.	A5: Data depicted will not be altered from their original source.	A6: Data will be regionally comprehensive to the extent feasible, unless data is locally important . . .	A7: Data will be for informational purposes only. . .	A8: Data will be for informational purposes and will not be adopted by SCAG and are not an expression of regional policy.
1	Other/Data for State Grants	Agriculture and Working Lands	City Urban Restriction Boundary (SOAR)	SOAR_County	Ventura County	Save Our Open and Agricultural Resources zones that prohibit building without a vote of people zones for the unincorporated areas within the County of Ventura.	SOAR County SOAR County Ventura County Data Downloads (arcgis.com)	Available via public feature service	Meets some metadata requirements Last updated: 2022-06-24 Authorship: Ventura County Geographic Unit of Accuracy: N/A Methodology for Data Development: see metadata Anticipated timeline for regular updates: N/A Metadata: https://www.arcgis.com/sharing/rest/content/items/bd4d1a50dbca4293aa76c7caee9874d/info/metadata/metadata.xml?format=default&output=html	In compliance	In compliance	In compliance	In compliance - county wide	In compliance	In compliance
2	RAMNA	Agriculture and Working Lands	Farmland Mapping & Monitoring Program	Farmland Mapping/Monitoring Program (2022)	Division of Land Resource Protection (DLRP), within the Department of Conservation	The Farmland Mapping and Monitoring Program (FMMP) provides data to decision makers for use in planning for the present and future use of California's agricultural land resources.	https://www.conservation.ca.gov/dlrp/fmmp	Available via public feature service	Meets some metadata requirements Last updated: 2018 Authorship: N/A Geographic Unit of Accuracy: N/A Methodology for Data Development: N/A Anticipated timeline for regular updates: N/A Metadata: Found in Shapefile	In compliance	In compliance	In compliance	In compliance - statewide	In compliance	In compliance
3	Other/Data for State Grants	Agriculture and Working Lands	Statewide Crop Mapping		CNRA	*2021 data is provisional, 2020 data is final. Land use data is critically important to the work of the Department of Water Resources (DWR) and other California agencies. Understanding the impacts of land use, crop location, acreage, and management practices on environmental attributes and resource management is an integral step in the ability of Groundwater Sustainability Agencies (GSAs) to produce Groundwater Sustainability Plans (GSPs) and implement projects to attain sustainability.	Statewide Crop Mapping - Datasets - California Natural Resources Agencies Open Data	Available via public feature dataset	Meets some metadata requirements Follows DWR Spatial Data Standards, Version 3.3 Last updated: 2023-03-27 Authorship: Land IQ Geographic Unit of Accuracy: N/A Methodology for Data Development: see metadata Anticipated timeline for regular updates: N/A Metadata: found within shapefile	In compliance - check source URL to confirm the most recent final dataset	In compliance	In compliance	In compliance - statewide	In compliance	In compliance
4	Other/Data for State Grants	Built Environment	2019 Annual Land Use	AnnualLandUse19_HousingApp	SCAG	This is SCAG's 2019 Annual Land Use (ALU v.2019.2) at the parcel-level, updated as of February 2021.	https://hub.scag.ca.gov/datasets/ea9fd878c1947d2afac5142fd5cb658_0/about	Available via public feature service	Meets some metadata requirements Last updated: 2022-02-08 Authorship: Kevin Kane Geographic Unit of Accuracy: N/A Methodology for Data Development: N/A Anticipated timeline for regular updates: N/A Metadata: https://rdp.scag.ca.gov/mapping/rest/services/Housing/2019_Annual_Land_Use_NAD83/MapServer/0/metadata	In compliance	In compliance	In compliance	In compliance	In compliance	In compliance
5	Other/Data for State Grants	Built Environment	Building Climate Zones	Building Climate Zones	California Energy Commission	Building Climates Zones of California Climate Zone Descriptions for New Buildings - California is divided into 16 climatic boundaries or climate zones, which is incorporated into the Energy Efficiency Standards (Energy Code).	https://hub.scag.ca.gov/datasets/a99b89b565414eb58d270a4e0f804cbc_0/about	Available via public feature service	Meets some metadata requirements. Last Updated: 2021-12-2 Authorship: N/A Geographic Unit of Accuracy: N/A Methodology for Data Development: see metadata Anticipated Timeline for Regular Updates: N/A Metadata: https://www.arcgis.com/sharing/rest/content/items/a99b89b565414eb58d270a4e0f804cbc/info/metadata/metadata.xml?format=default&output=html	In compliance	In compliance	In compliance	In compliance - Statewide	In compliance	In compliance

ID	Type	Greenprint Theme	Layer Name	Feature Name	Source	Description	Source URL	A1: Data must be publicly available . . .	A2: Data will consist of the most recent publicly available data and must include a defined set of metadata including information on authorship, geographic unit of accuracy, methodology for data development and anticipated timeline for regular updates. *Most layers include some but not all metadata requirements. Further information will be gathered where available.	A3: Draft data will not be included in the tool.	A4. Data should be created, used and/or recommended for use by regulatory agencies, and other state and federal agencies.	A5. Data depicted will not be altered from their original source.	A6. Data will be regionally comprehensive to the extent feasible, unless data is locally important . . .	A7. Data will be for informational purposes only. . .	A8. Data will be for informational purposes and will not be adopted by SCAG and are not an expression of regional policy.
6	Other/Data for State Grants	Built Environment	Metrolink Routes - SCAG Region	OpenData/Metrolinklinescag	SCAG	This is a GIS file containing the alignment of the Metrolink Line	https://hub.scag.ca.gov/maps/bdee702dd7e843aa8fedcd7cdc446c48/about	Available via public feature service	Meets some metadata requirements. Authorship: N/A Geographic Unit of Accuracy: N/A Methodology for Data Development: N/A Anticipated Timeline for Regular Updates: N/A	In compliance	In compliance	In compliance	In compliance - Regional	In compliance	In compliance
7	RAMNA	Built Environment	SHOPP	State Hwy Operation & Protection Program (Minor A) pt	Caltrans	The Office of State Highway Operations and Protection Program (SHOPP) Management has primary responsibility for planning, developing, managing and reporting the four-year SHOPP portfolio of projects. This includes preparation of the four-year program, participating in the development of the State Highway System Management Plan, coordinating the formal amendment of adopted SHOPP projects, coordinating with CTC staff, management of the annual Minor Program, coordination with Districts and Headquarters divisions, and upkeep of project information in the Department's California Transportation Improvement Program System (CTIPS) database.	https://dot.ca.gov/programs/financial-programming/state-highway-operation-protection-program-minor-program-shop	Available via public feature service	Meets some metadata requirements. Authorship: Caltrans Geographic Unit of Accuracy: N/A Methodology for Data Development: N/A Anticipated timeline for regular updates: N/A	In compliance	In compliance	In compliance	In compliance - statewide	In compliance	In compliance
8	RAMNA	Built Environment	SHOPP	State Hwy Operation & Protection Program (Minor A) In	Caltrans	The Office of State Highway Operations and Protection Program (SHOPP) Management has primary responsibility for planning, developing, managing and reporting the four-year SHOPP portfolio of projects. This includes preparation of the four-year program, participating in the development of the State Highway System Management Plan, coordinating the formal amendment of adopted SHOPP projects, coordinating with CTC staff, management of the annual Minor Program, coordination with Districts and Headquarters divisions, and upkeep of project information in the Department's California Transportation Improvement Program System (CTIPS) database.	https://dot.ca.gov/programs/financial-programming/state-highway-operation-protection-program-minor-program-shop	Available via public feature service	Meets some metadata requirements. Authorship: Caltrans Geographic Unit of Accuracy: N/A Methodology for Data Development: N/A Anticipated timeline for regular updates: N/A	In compliance	In compliance	In compliance	In compliance - statewide	In compliance	In compliance
9	RAMNA	Built Environment	SHOPP	State Hwy Operation & Protection Program (Major) pt	Caltrans	The Office of State Highway Operations and Protection Program (SHOPP) Management has primary responsibility for planning, developing, managing and reporting the four-year SHOPP portfolio of projects. This includes preparation of the four-year program, participating in the development of the State Highway System Management Plan, coordinating the formal amendment of adopted SHOPP projects, coordinating with CTC staff, management of the annual Minor Program, coordination with Districts and Headquarters divisions, and upkeep of project information in the Department's California Transportation Improvement Program System (CTIPS) database.	https://dot.ca.gov/programs/financial-programming/state-highway-operation-protection-program-minor-program-shop	Available via public feature service	Meets some metadata requirements. Authorship: Caltrans Geographic Unit of Accuracy: N/A Methodology for Data Development: N/A Anticipated timeline for regular updates: N/A	In compliance	In compliance	In compliance	In compliance - statewide	In compliance	In compliance

ID	Type	Greenprint Theme	Layer Name	Feature Name	Source	Description	Source URL	A1: Data must be publicly available . . .	A2: Data will consist of the most recent publicly available data and must include a defined set of metadata including information on authorship, geographic unit of accuracy, methodology for data development and anticipated timeline for regular updates. *Most layers include some but not all metadata requirements. Further information will be gathered where available.	A3: Draft data will not be included in the tool.	A4. Data should be created, used and/or recommended for use by regulatory agencies, and other state and federal agencies.	A5. Data depicted will not be altered from their original source.	A6. Data will be regionally comprehensive to the extent feasible, unless data is locally important . .	A7. Data will be for informational purposes only. . .	A8. Data will be for informational purposes and will not be adopted by SCAG and are not an expression of regional policy.
10	RAMNA	Built Environment	SHOPP	State Hwy Operation & Protection Program (Major) In	Caltrans	The Office of State Highway Operations and Protection Program (SHOPP) Management has primary responsibility for planning, developing, managing and reporting the four-year SHOPP portfolio of projects. This includes preparation of the four-year program, participating in the development of the State Highway System Management Plan, coordinating the formal amendment of adopted SHOPP projects, coordinating with CTC staff, management of the annual Minor Program, coordination with Districts and Headquarters divisions, and upkeep of project information in the Department's California Transportation Improvement Program System (CTIPS) database.	https://dot.ca.gov/prgrams/financial-programming/state-highway-operation-protection-program-minor-program	Available via public feature service	Meets some metadata requirements. Authorship: Caltrans Geographic Unit of Accuracy: N/A Methodology for Data Development: N/A Anticipated timeline for regular updates: N/A	In compliance	In compliance	In compliance	In compliance - statewide	In compliance	In compliance
11	RAMNA	Built Environment	State Highway Network	Transversable State Highway	Caltrans	Highway Shields as seen within the web mapping applications within the Caltrans Portal	https://gis.data.ca.gov/datasets/77f2d7ba94e040a78bfb36feb6279da0/about	Available via public feature service	Meets some metadata requirements. Last updated: 2019-07-17 Authorship: N/A Geographic Unit of Accuracy: N/A Methodology for Data Development: N/A Anticipated timeline for regular updates: N/A	In compliance	In compliance	In compliance	In compliance - statewide	In compliance	In compliance
12	RAMNA	Built Environment	STIP	State Transportation Improvement Program pt	California Transportation Commission	The STIP is a multi-year capital improvement program of transportation projects on and off the State Highway System, funded with revenues from the Transportation Investment Fund and other funding sources. STIP programming generally occurs every two years. The programming cycle begins with the release of a proposed fund estimate in July of odd-numbered years, followed by California Transportation Commission (CTC) adoption of the fund estimate in August (odd years). The fund estimate serves to identify the amount of new funds available for the programming of transportation projects. Once the fund estimate is adopted, Caltrans and the regional planning agencies prepare transportation improvement plans for submittal by December 15th (odd years). Caltrans prepare the Interregional Transportation Improvement Plan (ITIP) and regional agencies prepare Regional Transportation Improvement Plans (RTIPs). Public hearings are held in January (even years) in both northern and southern California. The STIP is adopted by the CTC by April (even years).	https://dot.ca.gov/prgrams/cal-assistance/fed-and-state-programs/state-transportation-improvement-program	Available via public feature service	Meets some metadata requirements Last updated: N/A Authorship: N/A Geographic Unit of Accuracy: N/A Methodology for Data Development: N/A Anticipated timeline for regular updates: N/A Metadata: N/A	In compliance	In compliance	In compliance	In compliance - statewide	In compliance	In compliance
13	RAMNA	Built Environment	STIP	State Transportation Improvement Program In	California Transportation Commission	The STIP is a multi-year capital improvement program of transportation projects on and off the State Highway System, funded with revenues from the Transportation Investment Fund and other funding sources. STIP programming generally occurs every two years. The programming cycle begins with the release of a proposed fund estimate in July of odd-numbered years, followed by California Transportation Commission (CTC) adoption of the fund estimate in August (odd years). The fund estimate serves to identify the amount of new funds available for the programming of transportation projects. Once the fund estimate is adopted, Caltrans and the regional planning agencies prepare transportation improvement plans for submittal by December 15th (odd years). Caltrans prepare the Interregional Transportation Improvement Plan (ITIP) and regional agencies prepare Regional Transportation Improvement Plans (RTIPs). Public hearings are held in January (even years) in both northern and southern California. The STIP is adopted by the CTC by April (even years).	https://dot.ca.gov/prgrams/cal-assistance/fed-and-state-programs/state-transportation-improvement-program	Available via public feature service	Meets some metadata requirements Last updated: N/A Authorship: N/A Geographic Unit of Accuracy: N/A Methodology for Data Development: N/A Anticipated timeline for regular updates: N/A Metadata: N/A	In compliance	In compliance	In compliance	In compliance - statewide	In compliance	In compliance

ID	Type	Greenprint Theme	Layer Name	Feature Name	Source	Description	Source URL	A1: Data must be publicly available . . .	A2: Data will consist of the most recent publicly available data and must include a defined set of metadata including information on authorship, geographic unit of accuracy, methodology for data development and anticipated timeline for regular updates. *Most layers include some but not all metadata requirements. Further information will be gathered where available.	A3: Draft data will not be included in the tool.	A4. Data should be created, used and/or recommended for use by regulatory agencies, and other state and federal agencies.	A5. Data depicted will not be altered from their original source.	A6. Data will be regionally comprehensive to the extent feasible, unless data is locally important . .	A7. Data will be for informational purposes only. . .	A8. Data will be for informational purposes and will not be adopted by SCAG and are not an expression of regional policy.
14	Other/Data for State Grants	Environmental Justice, Equity, and Inclusion	Calenviroscreen Factors (Pollution Burden & Population)	CanEnviroScreen 4.0 Results	CalEPA	CalEnviroScreen is a screening methodology that can be used to help identify California communities that are disproportionately burdened by multiple sources of pollution. The new version of CalEnviroScreen (4.0) updates and improves the wuality of existing indicators, incorporates a new indicator to capture information on lead exposure risk to children from housing, and will provide a data dashboard tool (coming soon).	CalEnviroScreen (arcgis.com)	Available via public feature service	Meets some metadata requirements Last updated: 2022-02-23 Authorship: CalEPA Geographic Unit of Accuracy: Census Tract Methodology for Data Development: see metadata Anticipated timeline for regular updates: N/A Metadata: https://services1.arcgis.com/PCHfHz4GIDNAhBb/arcgis/rest/services/CalEnviroScreen_4_0_Results_/FeatureServer/info/metadata	In compliance	In compliance	In compliance	In compliance - statewide	In compliance	In compliance
15	Other/Data for State Grants	Environmental Justice, Equity, and Inclusion	CDC Social Vulnerability Index 2018	Overall SVI - Tracts	CDC	2018 Social Vulnerability Index (SVI). Created by the Centers for Disease Control and Prevention (CDC) / Agency for Toxic Substances and Disease Registry (ATSDR) / Geospatial Research, Analysis, and Services Program (GRASP).	https://hub.scag.ca.gov/maps/18981b657cf04f2dbe0df065f20581db/about	Available via public feature service	Meets some metadata requirements Last updated: 2021-06-25 (website says mos recent was feb 2022) Authorship: N/A Geographic Unit of Accuracy: N/A Methodology for Data Development: N/A Anticipated timeline for regular updates: N/A Metadata: https://www.arcgis.com/sharing/rest/content/items/18981b657cf04f2dbe0df065f20581db/info/metadata/metadata.xml?format=default&output=html	In compliance	In compliance	In compliance	In compliance	In compliance	In compliance
16	Other/Data for State Grants	Environmental Justice, Equity, and Inclusion	Disadvantaged Communities	DisadvantagedCommunities_boundary_scag	OEHHA	This Disadvantaged Communities (DAC) file contains the Census tracts that met criteria as 2022 Disadvantaged Communities (SB535) with Tribal Areas that fall outside of the designated Census tracts.	https://oeaha.ca.gov/calenviroscreens/b535	Available via public feature service	Meets some metadata requirements. Last Updated: 2022-06-02 Authorship: Geographic Unit of Accuracy: Census Tract Methodology for Data Development: see metadata Ancitipated Timeline for Regular Updates: N/A Metadata: https://services1.arcgis.com/PCHfHz4GIDNAhBb/ArcGIS/rest/services/SB_535_Disadvantaged_Communities_2022/FeatureServer/0/metadata	In compliance	In compliance	In compliance	In compliance - Regional	In compliance	In compliance
17	Other/Data for State Grants	Environmental Justice, Equity, and Inclusion	Household Composition/ Disability Theme	Household Composition/ Disability Theme - Tracts	CDC	ATSDR's Geospatial Research, Analysis & Services Program (GRASP) has created a tool to help emergency response planners and public health officials identify and map the communities that will most likely need support before, during, and after a hazardous event. The Social Vulnerability Index (SVI) uses U.S. Census data to determine the social vulnerability of every county and tract. CDC SVI ranks each county and tract on 15 social factors, including poverty, lack of vehicle access, and crowded housing, and groups them into four related themes: Socioeconomic, Housing Composition and Disability, Minority Status and Language Housing and Transportation	https://services3.arcgis.com/ZvidGQkLADJxRSJ2/ArcGIS/rest/services/CDC_Social_Vulnerability_Index_2018/FeatureServer/8	Available via public feature service	Meets some metadata requirements Last updated: 2022-12-22 (website) Authorship: CDC\ATSDR\Office of Innovation and Analytics\Geospatial Research, Analysis, and Services Program (GRASP) Geographic Unit of Accuracy: Census Tract Methodology for Data Development: See pdf Anticipated timeline for regular updates: N/A Metadata: Found in shapefile, was told to refer to https://www.atsdr.cdc.gov/placeandhealth/svi/data_documentation_download.html	In compliance	In compliance	In compliance	In compliance - nationwide	In compliance	In compliance

ID	Type	Greenprint Theme	Layer Name	Feature Name	Source	Description	Source URL	A1: Data must be publicly available . . .	A2: Data will consist of the most recent publicly available data and must include a defined set of metadata including information on authorship, geographic unit of accuracy, methodology for data development and anticipated timeline for regular updates. *Most layers include some but not all metadata requirements. Further information will be gathered where available.	A3: Draft data will not be included in the tool.	A4. Data should be created, used and/or recommended for use by regulatory agencies, and other state and federal agencies.	A5. Data depicted will not be altered from their original source.	A6. Data will be regionally comprehensive to the extent feasible, unless data is locally important . . .	A7. Data will be for informational purposes only. . .	A8. Data will be for informational purposes and will not be adopted by SCAG and are not an expression of regional policy.
18	Other/Data for State Grants	Environmental Justice, Equity, and Inclusion	Housing/Transportation Theme - Tracts	Housing/Transportation Theme - Tracts	CDC	ATSDR's Geospatial Research, Analysis & Services Program (GRASP) has created a tool to help emergency response planners and public health officials identify and map the communities that will most likely need support before, during, and after a hazardous event. The Social Vulnerability Index (SVI) uses U.S. Census data to determine the social vulnerability of every county and tract. CDC SVI ranks each county and tract on 15 social factors, including poverty, lack of vehicle access, and crowded housing, and groups them into four related themes: Socioeconomic Housing Composition and Disability Minority Status and Language Housing and Transportation	https://hub.scaq.ca.gov/maps/18981b657cf04f2dbe0df065f20581db/about	Available via public feature service	Meets some metadata requirements Last updated: 2021-06-25 (website says most recent was feb 2022) Authorship: N/A Geographic Unit of Accuracy: Census Tract Methodology for Data Development: N/A Anticipated timeline for regular updates:N/A Metadata: https://www.arcgis.com/sharing/rest/content/items/18981b657cf04f2dbe0df065f20581db/info/metadata/metadata.xml?format=default&output=html	In compliance	In compliance	In compliance	In compliance - nationwide	In compliance	In compliance
19	Other/Data for State Grants	Environmental Justice, Equity, and Inclusion	Minority/Language Theme	Minority/Language Theme - Tracts	CDC	ATSDR's Geospatial Research, Analysis & Services Program (GRASP) has created a tool to help emergency response planners and public health officials identify and map the communities that will most likely need support before, during, and after a hazardous event. The Social Vulnerability Index (SVI) uses U.S. Census data to determine the social vulnerability of every county and tract. CDC SVI ranks each county and tract on 15 social factors, including poverty, lack of vehicle access, and crowded housing, and groups them into four related themes: Socioeconomic Housing Composition and Disability Minority Status and Language Housing and Transportation	https://hub.scaq.ca.gov/maps/18981b657cf04f2dbe0df065f20581db/about	Available via public feature service	Meets some metadata requirements Last updated: 2021-06-25 (website says mos recent was feb 2022) Authorship: N/A Geographic Unit of Accuracy: Census Tract Methodology for Data Development: N/A Anticipated timeline for regular updates:N/A Metadata: https://www.arcgis.com/sharing/rest/content/items/18981b657cf04f2dbe0df065f20581db/info/metadata/metadata.xml?format=default&output=html	In compliance	In compliance	In compliance	In compliance - nationwide	In compliance	In compliance
20	Other/Data for State Grants	Environmental Justice, Equity, and Inclusion	National Forest System Trails		US Forest Service	The Trails Layer is designed to provide information about National Forest System trail locations and characteristics to the public. The Trails Layer is designed to provide information about National Forest System trail locations and characteristics to the public. When fully realized, it will describe trail locations, basic characteristics of the trail, and where and when various trail uses are prohibited, allowed and encouraged. Because the data readiness varies between Forests, each Forest will approve which level of attribute subset are published for that forest. Forests can provide no information or one of three attribute subsets describing trails. The attribute subsets include TrailNFS_Centerline which includes the location and trail name and number; TrailNFS_Basic which adds information about basic trail characteristics; and TrailNFS_Mgmt which adds information about where and when users are prohibited, allowed, and encouraged. When a Forest chooses to provide the highest attribute subset, TrailNFS_Mgmt, these attributes must be consistent with the Forest's published Motorized Vehicle Use Map (MVUM).	https://apps.fs.usda.gov/arcx/rest/services/EDW_TrailNFS_Publish_01/MapServer/0	Available via public feature service	Meets some metadata requirements Last updated: 2022-08-25 Authorship: US Forest Service Geographic Unit of Accuracy: N/A Methodology for Data Development: see metadata Anticipated timeline for regular updates: N/A Metadata: https://data.fs.usda.gov/geodata/edw/edw_resources/meta/S_USA.TrailNFS_Publish.xml	In compliance*	In compliance	In compliance	In compliance - nationwide	In compliance	In compliance

ID	Type	Greenprint Theme	Layer Name	Feature Name	Source	Description	Source URL	A1: Data must be publicly available . . .	A2: Data will consist of the most recent publicly available data and must include a defined set of metadata including information on authorship, geographic unit of accuracy, methodology for data development and anticipated timeline for regular updates. *Most layers include some but not all metadata requirements. Further information will be gathered where available.	A3: Draft data will not be included in the tool.	A4. Data should be created, used and/or recommended for use by regulatory agencies, and other state and federal agencies.	A5. Data depicted will not be altered from their original source.	A6. Data will be regionally comprehensive to the extent feasible, unless data is locally important . .	A7. Data will be for informational purposes only. . .	A8. Data will be for informational purposes and will not be adopted by SCAG and are not an expression of regional policy.
21	Other/Data for State Grants	Environmental Justice, Equity, and Inclusion	Priority Equity Areas	Priority Equity Communities	SCAG	This dataset is not final until adoption of Connect SoCal 2024. This dataset is used by SCAG to assess impacts of Connect SoCal 2024 on priority populations, with the intent that the framework could be built upon to target transportation investments in communities who need it the most. Priority Equity Communities are census tracts in the SCAG region that have a greater concentration of populations that have been historically marginalized and are susceptible to inequitable outcomes based on several socioeconomic factors. The socioeconomic factors, or priority populations, were selected based on statutorily protected populations and refined with input gathered through outreach processes. The US Census Bureau 2017-2021 American Community Survey 5-Year estimates are used to define each of the thresholds for the priority populations. SCAG's 2022 High Quality Transit Corridors are used in the Limited Vehicle and Transit Access criteria.This dataset uses 2020 census tracts in the SCAG region.	Priority Equity Community boundary Regional Data Platform (RDP) Home Southern California Association of Governments	Available via public feature service.	Meets some metadata requirements Last updated: 2023-06-27 Authorship: SCAG Geographic Unit of Accuracy: Census Tract Methodology for Data Development: see metadata Anticipated timeline for regular updates: N/A Metadata: https://maps.scag.ca.gov/scaggis/rest/services/OpenData/PriorityEquityCommunity_boundary_scag/MapServer/0/metadata	*This dataset is not final until adoption of Connect SoCal 2024	In compliance	In compliance	In compliance - SCAG region	In compliance	In compliance
22	Other/Data for State Grants	Environmental Justice, Equity, and Inclusion	Priority Equity Community Boundaries	PriorityEquityCommunity_boundary_scag	SCAG	This dataset is not final until adoption of Connect SoCal 2024. This dataset is used by SCAG to assess impacts of Connect SoCal 2024 on priority populations, with the intent that the framework could be built upon to target transportation investments in communities who need it the most. Priority Equity Communities are census tracts in the SCAG region that have a greater concentration of populations that have been historically marginalized and are susceptible to inequitable outcomes based on several socioeconomic factors. The socioeconomic factors, or priority populations, were selected based on statutorily protected populations and refined with input gathered through outreach processes.	https://hub.scag.ca.gov/datasets/daa7cbaf5b064399800f3426cbb64270_0/about	Available via public feature service	Meets some metadata requirements Last updated: 2023-05-22 Authorship: Annaleigh Ekman Geographic Unit of Accuracy: N/A Methodology for Data Development: N/A Anticipated timeline for regular updates:N/A Metadata: https://maps.scag.ca.gov/scaggis/rest/services/OpenData/PriorityEquityCommunity_boundary_scag/MapServer/0/metadata	This dataset is not final until adoption of Connect SoCal 2024	In compliance	In compliance	In compliance	In compliance	In compliance
23	Other/Data for State Grants	Environmental Justice, Equity, and Inclusion	Recreational Routes (trails)		CA State Parks	Recreational Routes: A simplified line layer of California State Parks recreational routes, providing location, name, Park name and other attributes. Current as of February 28, 2022.	https://gis.data.cnra.ca.gov/datasets/csparks::recreationalroutes/explorer	Available via public feature service	Meets some metadata requirements Last updated: 2022-02-28 Authorship: CA Department of Parks and Recreation Geographic Unit of Accuracy: N/A Methodology for Data Development: see metadata Anticipated timeline for regular updates: Continually Metadata: https://www.arcgis.com/sharing/rest/content/items/45fa4fba9dde4a8dbb23cdd56da40703/info/metadata/metadata.xml?format=default&output=html	In compliance	In compliance	In compliance - statewide	In compliance	In compliance	

ID	Type	Greenprint Theme	Layer Name	Feature Name	Source	Description	Source URL	A1: Data must be publicly available . . .	A2: Data will consist of the most recent publicly available data and must include a defined set of metadata including information on authorship, geographic unit of accuracy, methodology for data development and anticipated timeline for regular updates. *Most layers include some but not all metadata requirements. Further information will be gathered where available.	A3: Draft data will not be included in the tool.	A4. Data should be created, used and/or recommended for use by regulatory agencies, and other state and federal agencies.	A5. Data depicted will not be altered from their original source.	A6. Data will be regionally comprehensive to the extent feasible, unless data is locally important . .	A7. Data will be for informational purposes only. . .	A8. Data will be for informational purposes and will not be adopted by SCAG and are not an expression of regional policy.
24	Other/Data for State Grants	Environmental Justice, Equity, and Inclusion	Social Vulnerability - Socioeconomic Theme	Socioeconomic Theme - Tracts	CDC	ATSDR's Geospatial Research, Analysis & Services Program (GRASP) has created a tool to help emergency response planners and public health officials identify and map the communities that will most likely need support before, during, and after a hazardous event. The Social Vulnerability Index (SVI) uses U.S. Census data to determine the social vulnerability of every county and tract. CDC SVI ranks each county and tract on 15 social factors, including poverty, lack of vehicle access, and crowded housing, and groups them into four related themes: Socioeconomic Housing Composition and Disability Minority Status and Language Housing and Transportation	https://hub.scag.ca.gov/maps/18981b657cf04f2db0df065f20581db/about	Available via public feature service	Meets some metadata requirements Last updated: 2021-06-25 (website says most recent was feb 2022) Authorship: N/A Geographic Unit of Accuracy: N/A Methodology for Data Development: N/A Anticipated timeline for regular updates: N/A Metadata: https://www.arcgis.com/sharing/rest/content/items/18981b657cf04f2db0df065f20581db/info/metadata/metadata.xml?format=default&output=html	In compliance	In compliance	In compliance	In compliance	In compliance	In compliance
25	Other/Data for State Grants	Geographic Context	California Senate Districts - SCAG Region	DataWarehouse.SDEADMIN.Senate_district_scag	SCAG	This dataset is one from a series of district layers pertaining to California Senate Districts that are derived from the California State Senate information. All data layers are reprojected into the SCAG standard projection. The following district layer is included in the series: Senate_districts: Current California Senate Districts based on the new district boundaries enacted into state law on September 13, 2001, and signed into law on September 13, 2001, and signed into law on September 26, 2001 for use with the March 2002 primary election The boundary has been updated as of 11/2011	https://hub.scag.ca.gov/maps/84cd513b1f194c5aa21b22d165fe9a9b/about	Available via public feature service	Meets some metadata requirements. Last Updated: 2022-02-14 Authorship: California Citizens Redistricting Commission Geographic Unit of Accuracy: Senate Districts Methodology for Data Development: see metadata Anticipated Timeline for Regular Updates: N/A Metadata: https://www.arcgis.com/sharing/rest/content/items/84cd513b1f194c5aa21b22d165fe9a9b/info/metadata/metadata.xml?format=default&output=html	In compliance	In compliance	In compliance	In compliance - Statewide	In compliance	In compliance
26	Other/Data for State Grants	Geographic Context	City Boundaries	City Boundaries SCAG	SCAG	This is SCAG's 2016 city and county unincorporated area boundary data (November 2018 version), developed for the 2020 Regional Transportation Plan/Sustainable Communities Strategy (RTP/SCS). The dataset includes the boundaries for the 191 cities. This dataset includes the city boundaries and county unincorporated areas in the SCAG Region for year 2016 (updated as of November 2018). The dataset is comprised of data collected from each of the 6 counties contained within the SCAG Region. The data represents the city boundary for each of the 191 cities as well as 6 county unincorporated areas in the region. Data was obtained from county LAFCOs (except for Imperial County, CA) and County Assessor's Office (for Imperial County cites ONLY) to reflect the most current updates and annexations to the city boundaries. NOTES: This data was reviewed by local jurisdictions and reflects each jurisdiction's input received during the SCAG's 2020 RTP/SCS Local Input and Envisioning Process. This data incorporated the City of Brawley annexation BR1-08 (Rancho Porter; adopted on April 17, 2014) based on local input submitted by the City of Brawley.	https://gisdata.scag.opens.com/datasets/27b134459761486991f0b72f8a9a67c50/explorer?location=33.757092%2C-116.908250%2C8.00	Available via public feature service.	Meets some metadata requirements Last updated: March 30, 2020 Authorship: SCAG Geographic Unit of Accuracy: N/A Methodology for Data Development: see metadata Anticipated timeline for regular updates: N/A Metadata: https://www.arcgis.com/sharing/rest/content/items/27b134459761486991f0b72f8a9a67c50/info/metadata/metadata.xml?format=default&output=html	In compliance	In compliance	In compliance	In compliance - SCAG region	In compliance	In compliance

ID	Type	Greenprint Theme	Layer Name	Feature Name	Source	Description	Source URL	A1: Data must be publicly available . . .	A2: Data will consist of the most recent publicly available data and must include a defined set of metadata including information on authorship, geographic unit of accuracy, methodology for data development and anticipated timeline for regular updates. *Most layers include some but not all metadata requirements. Further information will be gathered where available.	A3: Draft data will not be included in the tool.	A4. Data should be created, used and/or recommended for use by regulatory agencies, and other state and federal agencies.	A5. Data depicted will not be altered from their original source.	A6. Data will be regionally comprehensive to the extent feasible, unless data is locally important . .	A7. Data will be for informational purposes only. . .	A8. Data will be for informational purposes and will not be adopted by SCAG and are not an expression of regional policy.
27	RAMNA	Geographic Context	County Boundaries	County Boundaries	U.S. Census Bureau	This polygon feature class represents the California county boundaries. Based on TIGER/Line 2010 county files, the Caltrans districts and California county name abbreviation were added to this layer for Caltrans internal GIS application.	https://gis.caltrans.opendata.arcgis.com/datasets/11030d0d67e49d789080cc47d9e4e618	Available via public feature service	Meets some metadata requirements Last updated: 2010-07 Authorship: US Census Bureau Geographic Unit of Accuracy: Coordinates in the TIGER/Line shapefiles have six implied decimal places, but the positional accuracy of these coordinates is not as great as the six decimal places suggest. Methodology for Data Development: N/A Anticipated timeline for regular updates: Future releases of TIGER/Line Shapefiles will reflect updates made to the Census MAF/TIGER database Metadata: https://caltrans-gis.dot.ca.gov/arcgis/rest/services/CHboundary/County_Boundaries/MapServer/0/metadata	In compliance	In compliance	In compliance	In compliance - statewide	In compliance	In compliance
28	RAMNA	Geographic Context	County Parcels	County of San Bernardino	Individual Counties	This dataset contains County of San Bernardino parcel polygons.	https://open.sbcounty.gov/datasets/9ca3e6b812d1473fb42eafd412a161390/explore?location=35.028867%2C-116.350653%2C12.17	Available via public feature service	Meets some metadata requirements Last updated: 2023-09-23 (from County Portal) Authorship: N/A Geographic Unit of Accuracy: N/A Methodology for Data Development: N/A Anticipated timeline for regular updates:N/A Metadata: N/A	In compliance	In compliance	In compliance	Partially - San Bernardino County Only, combine with adjacent layers	In compliance	In compliance
29	RAMNA	Geographic Context	County Parcels	County of Los Angeles	Individual Counties	Parcel information for Los Angeles County	https://geohub.lacity.org/documents/4d67b154ae614d219c58535659128e71/about	Available via public feature service	Meets some metadata requirements Last updated: 2022-08-10 (from County Portal) Authorship: N/A Geographic Unit of Accuracy: N/A Methodology for Data Development: N/A Anticipated timeline for regular updates:N/A Metadata: N/A	In compliance	In compliance	In compliance	Partially - LA County Only, combine with adjacent layers	In compliance	In compliance
30	RAMNA	Geographic Context	County Parcels	County of Ventura	Individual Counties	The parcel data reflects the current parcels as per the Ventura County Assessor's Office. The data contained within the Feature Class does not include the Assessor's parcel description data.	https://venturacountydataadownload.vcitsgis.hub.arcgis.com/search?q=parcel	Available via public feature service	Meets some metadata requirements Last updated: 2023-07-27 (from County Portal) Authorship: N/A Geographic Unit of Accuracy: N/A Methodology for Data Development: N/A Anticipated timeline for regular updates:N/A Metadata: N/A	In compliance	In compliance	In compliance	Partially - Ventura County Only, combine with adjacent layers	In compliance	In compliance

ID	Type	Greenprint Theme	Layer Name	Feature Name	Source	Description	Source URL	A1: Data must be publicly available . . .	A2: Data will consist of the most recent publicly available data and must include a defined set of metadata including information on authorship, geographic unit of accuracy, methodology for data development and anticipated timeline for regular updates. *Most layers include some but not all metadata requirements. Further information will be gathered where available.	A3: Draft data will not be included in the tool.	A4. Data should be created, used and/or recommended for use by regulatory agencies, and other state and federal agencies.	A5. Data depicted will not be altered from their original source.	A6. Data will be regionally comprehensive to the extent feasible, unless data is locally important . .	A7. Data will be for informational purposes only. . .	A8. Data will be for informational purposes and will not be adopted by SCAG and are not an expression of regional policy.
31	RAMNA	Geographic Context	County Parcels	County of Orange	Individual Counties	This polygon feature class depicts parcels throughout Orange County. OC Survey's Land Information Systems section is where the County of Orange Landbase is maintained. This parcel-level digital basemap contains over 687,000 subdivision parcels.	https://data.ocpw.opendata.arcgis.com/documents/09b293e309e54cc793bd1b9f4c1f0e4e/about	Available via public feature service	Meets some metadata requirements Last updated: 2019-08-02 (from County Portal) Authorship: N/A Geographic Unit of Accuracy: N/A Methodology for Data Development: N/A Anticipated timeline for regular updates:N/A Metadata: https://www.arcgis.com/sharing/rest/content/items/09b293e309e54cc793bd1b9f4c1f0e4e/info/metadata/metadata.xml?format=default&output=html	In compliance	In compliance	In compliance	Partially - Orange County Only, combine with adjacent layers	In compliance	In compliance
32	RAMNA	Geographic Context	County Parcels	County of Riverside	Individual Counties	Parcel data to replace current Parcel Assessor data. Simplified schema.	https://gis.opendata-countyofriverside.opendata.arcgis.com/datasets/CountyofRiverside:parcels-3/explore?location=33.759033%2C-116.269070%2C16.82	Available via public feature service	Meets some metadata requirements Last updated: 2023-09-21 (from County Portal) Authorship: N/A Geographic Unit of Accuracy: N/A Methodology for Data Development: N/A Anticipated timeline for regular updates:N/A Metadata: N/A	In compliance	In compliance	In compliance	Partially - Riverside County Only, combine with adjacent layers	In compliance	In compliance
33	RAMNA	Geographic Context	County Parcels	County of Imperial	Individual Counties	Parcel data for Imperial County.	https://services7.arcgis.com/RomaVqqozKczDNgd/arcgis/rest/services/Parcels_APN/FeatureService/0	Available via public feature service	Meets some metadata requirements Last updated: N/A Authorship: N/A Geographic Unit of Accuracy: N/A Methodology for Data Development: N/A Anticipated timeline for regular updates:N/A Metadata: N/A	In compliance	In compliance	In compliance	Partially - Imperial County Only, combine with adjacent layers	In compliance	In compliance
34	Other/Data for State Grants	Geographic Context	Supervisory Districts - SCAG Region	Data Warehouse.SDEADMIN.Supervisory_al_boundary_scag	SCAG	This feature dataset represents the SCAG region supervisor districts. It was updated in accordance to the 2020 US Census and the policy and procedure that guide redistricting.	https://hub.scaq.ca.gov/datasets/b777086acf664d3886d783410c7e971c_0/about	Available via public feature service	Meets some metadata requirements. Last Updated: 2023-09-7 Authorship: N/A Geographic Unit of Accuracy: Supervisorial District Methodology for Data Development: N/A Anticipated Timeline for Regular Updates: N/A Metadata: N/A	In compliance	In compliance	In compliance	In compliance - Regional	In compliance	In compliance

ID	Type	Greenprint Theme	Layer Name	Feature Name	Source	Description	Source URL	A1: Data must be publicly available . . .	A2: Data will consist of the most recent publicly available data and must include a defined set of metadata including information on authorship, geographic unit of accuracy, methodology for data development and anticipated timeline for regular updates. *Most layers include some but not all metadata requirements. Further information will be gathered where available.	A3: Draft data will not be included in the tool.	A4. Data should be created, used and/or recommended for use by regulatory agencies, and other state and federal agencies.	A5. Data depicted will not be altered from their original source.	A6. Data will be regionally comprehensive to the extent feasible, unless data is locally important . .	A7. Data will be for informational purposes only. . .	A8. Data will be for informational purposes and will not be adopted by SCAG and are not an expression of regional policy.
35	RAMNA	Geographic Context	Tribal Land Boundaries	BIA AIAN National LAR	U.S. Bureau of Indian Affairs	The purpose of the American Indian and Alaska Native Land Area Representation (AIAN-LAR) Geographic Information System (GIS) dataset is to depict the external extent of federal Indian reservations and the external extent of associated land held in "trust" by the United States, "restricted fee" or "mixed ownership" status for federally recognized tribes and individual Indians.	https://bia-geospatial.internal.goplatform.gov/indianlands/	Available via public feature service (need login)	Meets some metadata requirements Last updated: N/A Authorship: N/A Geographic Unit of Accuracy: N/A Methodology for Data Development: Kind of Anticipated timeline for regular updates: The LAR dataset is currently being modernized and will be updated later in 2024 with a regular update schedule.(from website) Metadata: Found in shapefile	In compliance	In compliance	In compliance	In compliance - nationwide	In compliance	In compliance
36	Other/Data for State Grants	Geographic Context	USA Census 2020 Redistricting - Tract	Tracts	U.S. Census Bureau	This layer contains 2020 Decennial Census data at the census tract level for all states plus DC and Puerto Rico. The attributes come from the 2020 Public Law 94-171 (P.L. 94-171) tables.	https://hub.scaq.ca.gov/datasets/1e79a179497041bb883bcf6da64839c3_0/about	Available via public feature service	Meets some metadata requirements. Last Updated: 2022-02-3 Authorship: N/A Geographic Unit of Accuracy: Census Tract Methodology for Data Development: see metadata Anticipated Timeline for Regular Updates: N/A Metadata: https://www.arcgis.com/sharing/rest/content/items/1e79a179497041bb883bcf6da64839c3/info/metadata/metadata.xml?format=pdf&output=html	In compliance	In compliance	In compliance	In compliance - Nationwide	In compliance	In compliance
37	RAMNA	Geographic Context	Zip Codes	TIGER/Line Shapefile, 2019, 2010 nation, U.S., 2010 Census 5-Digit ZIP Code Tabulation Area (ZCTA5) National	USPS	U.S. ZIP Code Boundaries represents five-digit ZIP Code areas used by the U.S. Postal Service to deliver mail more effectively. The first digit of a five-digit ZIP Code divides the United States into 10 large groups of states (or equivalent areas) numbered from 0 in the Northeast to 9 in the far West. Within these areas, each state is divided into an average of 10 smaller geographical areas, identified by the second and third digits. These digits, in conjunction with the first digit, represent a Sectional Center Facility (SCF) or a mail processing facility area. The fourth and fifth digits identify a post office, station, branch or local delivery area.	https://catalog.data.gov/datasets/tiger-line-shapefile-2019-2010-nation-u-s-2010-census-5-digit-zip-code-tabulation-area	Available via public feature service	Meets some metadata requirements Last updated: 2019-10-04 Authorship: N/A Geographic Unit of Accuracy: N/A Methodology for Data Development: N/A Anticipated timeline for regular updates:N/A Metadata: https://catalog.data.gov/harvest/object/be9bd657-e9da-4a63-b819-3dbbadf23200	In compliance	In compliance	In compliance	In compliance - nationwide	In compliance	In compliance
38	RAMNA	Habitat and Biodiversity	Aquatic Biodiversity Summary – ACE [ds2768]	Aquatic Biodiversity Summary - ACE [ds2768]	CDFW	The California Department of Fish and Wildlife's (CDFW) Areas of Conservation Emphasis (ACE) is a compilation and analysis of the best-available statewide spatial information in California on biodiversity, rarity and endemism, harvested species, significant habitats, connectivity and wildlife movement, climate vulnerability, climate refugia, and other relevant data (e.g., other conservation priorities such as those identified in the State Wildlife Action Plan (SWAP), stressors, land ownership). The ACE maps and data can be viewed in the ACE online map viewer, or downloaded for use in ArcGIS.	https://lab.data.ca.gov/dataset/aquatic-biodiversity-summary-ace-ds2768	Available via public feature service	Meets some metadata requirements Last updated: 2020-02-04 Authorship: Melanie Gogol-Prokurat Geographic Unit of Accuracy: N/A Methodology for Data Development: N/A Anticipated timeline for regular updates:N/A Metadata: https://map.dfg.ca.gov/metadata/ds2739.html?5.80.28l	In compliance	In compliance	In compliance	In compliance - Statewide	In compliance	In compliance
39	RAMNA	Habitat and Biodiversity	Areas of Conservation Emphasis - Climate Resilience	Terrestrial Climate Change Resilience	CDFW	Terrestrial Climate Change Resilience, Areas of Conservation Emphasis (ACE), version 3.0.	https://nr.m.dfg.ca.gov/FileHandler.ashx?DocumentID=150836&inline	Available via public feature service	Meets some metadata requirements Last updated: 2018-2-22 Authorship: Melanie Gogol-Prokurat Geographic Unit of Accuracy: N/A Methodology for Data Development: Available Anticipated timeline for regular updates: unknown	In compliance	In compliance	In compliance	In compliance - statewide	In compliance	In compliance

ID	Type	Greenprint Theme	Layer Name	Feature Name	Source	Description	Source URL	A1: Data must be publicly available . . .	A2: Data will consist of the most recent publicly available data and must include a defined set of metadata including information on authorship, geographic unit of accuracy, methodology for data development and anticipated timeline for regular updates. *Most layers include some but not all metadata requirements. Further information will be gathered where available.	A3: Draft data will not be included in the tool.	A4. Data should be created, used and/or recommended for use by regulatory agencies, and other state and federal agencies.	A5. Data depicted will not be altered from their original source.	A6. Data will be regionally comprehensive to the extent feasible, unless data is locally important . .	A7. Data will be for informational purposes only. . .	A8. Data will be for informational purposes and will not be adopted by SCAG and are not an expression of regional policy.
40	RAMNA	Habitat and Biodiversity	Areas of Special Biological Significance	Areas of Special Biological Significance	State Water Board	State Water Quality Protection Areas (SWQPA), formerly known as Areas of Special Biological Significance (ASBS) limit water quality impacts by prohibiting point source and storm drain discharges in nonterrestrial marine and estuarine areas.	https://www.waterboards.ca.gov/water_issues/programs/oc_ean/asbs_map.shtml	Available via public feature service	Meets some metadata requirements Last updated: 2022-04-07 (from website) Authorship: CA Nature Data Team (point of contact) Geographic Unit of Accuracy: N/A Methodology for Data Development: N/A Anticipated timeline for regular updates: varies Metadata: https://www.arcgis.com/sharing/rest/content/items/9874e050ef5c448c9880d00cb07967a1/info/metadata/metadata.xml?format=default&output=html	In compliance	In compliance	In compliance	In compliance - statewide	In compliance	In compliance
41	RAMNA	Habitat and Biodiversity	Black Mountain Conservation Bank	Conservation and Mitigation Banks [ds2782]	Mitigation Service Banks	A conservation or mitigation bank is privately or publicly owned land managed for its natural resource values. In exchange for permanently protecting, managing, and monitoring the land, the bank sponsor is allowed to sell or transfer habitat credits to permittees who need to satisfy legal requirements and compensate for the environmental impacts of developmental projects.	https://wilderness.net/visit-wilderness/gis-gps.php	Available via public feature service	Meets some metadata requirements Last updated: 2022-11-15 Authorship: California Department of Fish and Wildlife Geographic Unit of Accuracy: N/A Methodology for Data Development: N/A Anticipated timeline for regular updates: as needed Metadata: https://www.arcgis.com/sharing/rest/content/items/3ad509bf16be4e3e962251ca8740eabe/info/metadata/metadata.xml?format=default&output=html	In compliance	In compliance	In compliance	In compliance - statewide	In compliance	In compliance
42	RAMNA	Habitat and Biodiversity	BLM National Designated Areas of Critical Environmental Concern	BLM Natl Designated Areas of Critical Environmental Concern Polygons	United States Bureau of Land Management	This polygon feature class shows the spatial extent and boundaries of Areas of Critical Environmental Concern that have become officially designated by the BLM. In general, the ACEC dataset defines areas within the public lands where special management attention is required to protect and prevent irreparable damage to important historic, cultural, or scenic values, fish and wildlife resources or other natural systems or processes, or to protect life and safety from natural hazards. The Implementation Guide represents the official national dataset from which this dataset was derived.	https://qbp-blm-egis.hub.arcgis.com/datasets/11c9e34831c7446a8202b334bc64898a/about	Available via public feature service	Meets some metadata requirements Last updated: 2023-09-15 Authorship: BLM Geographic Unit of Accuracy: N/A Methodology for Data Development: N/A Anticipated timeline for regular updates: as needed Metadata: https://www.arcgis.com/sharing/rest/content/items/11c9e34831c7446a8202b334bc64898a/info/metadata/metadata.xml?format=default&output=html	In compliance	In compliance	In compliance	In compliance - multiple states	In compliance	In compliance
43	RAMNA	Habitat and Biodiversity	CA State Wildlife Action Plan - Terrestrial Targets - 2015	SWAP Terrestrial Targets - 2015 [ds1966]	CDFW	This data set was created to describe the spatial extent of targets for the 2015 California State Wildlife Action Plan (SWAP) Update. The California State Wildlife Action Plan (SWAP) is required under the State and Tribal Wildlife Grants Program (SWG) to allow states and territories to receive Federal grant funds. It is a comprehensive vision for wildlife conservation initially completed in 2005 and updated in 2015. The GIS data for SWAP are divided into two areas - terrestrial (vegetation macrogroup based) and aquatic(watershed based)data. This file contains the terrestrial targets.	https://data.ca.gov/dataset/swap-terrestrial-targets-2015-ds1966	Available via public feature service	Meets some metadata requirements Last updated: 2018-02-01 Authorship: Diane Mastair Geographic Unit of Accuracy: N/A Methodology for Data Development: N/A Anticipated timeline for regular updates: as needed Metadata: https://map.dfg.ca.gov/metadata/DS1966.html	In compliance	In compliance	In compliance	In compliance - statewide	In compliance	In compliance

ID	Type	Greenprint Theme	Layer Name	Feature Name	Source	Description	Source URL	A1: Data must be publicly available . . .	A2: Data will consist of the most recent publicly available data and must include a defined set of metadata including information on authorship, geographic unit of accuracy, methodology for data development and anticipated timeline for regular updates. *Most layers include some but not all metadata requirements. Further information will be gathered where available.	A3: Draft data will not be included in the tool.	A4. Data should be created, used and/or recommended for use by regulatory agencies, and other state and federal agencies.	A5. Data depicted will not be altered from their original source.	A6. Data will be regionally comprehensive to the extent feasible, unless data is locally important . .	A7. Data will be for informational purposes only. . .	A8. Data will be for informational purposes and will not be adopted by SCAG and are not an expression of regional policy.
44	RAMNA	Habitat and Biodiversity	Calfish Passage Assessment Database		Calfish	The Passage Assessment Database (PAD) is an ongoing map-based inventory of known and potential barriers to anadromous fish in California, compiled and maintained through a cooperative interagency agreement.	https://www.calfish.org/programsdata/habitatandbarriers/californiafishpassageassessmentdatabase.aspx	Available via public feature service	Meets some of the metadata requirements Last updated: 2023-08-31 Authorship: Anne Elston Geographic Unit of Accuracy: N/A Methodology for Data Development: N/A Anticipated timeline for regular updates: Automatic metadata update (2023-09-11) https://map.dfg.ca.gov/metadata/DS0069.html	In compliance	In compliance	In compliance	In compliance - Statewide	In compliance	In compliance
45	RAMNA	Habitat and Biodiversity	California Conservation Easements		California Protected Areas Database	The California Conservation Easement Database (CCED) contains data about conservation easement lands. Lands are under easement with governments, non-profits and private entities. Easement types include conservation, agricultural, forest, and home owner association protected areas. Utility, right-of-way, and other maintenance easements are not included. Data includes all known easements in California. Easements are typically defined by the entire parcel, though easements typically only cover a portion of the parcel. Data is known to be incomplete and include errors. Data has been compiled from existing datasets and thus accuracy varies greatly between areas.	https://www.calands.org/cced/	Available via public feature service	Meets some metadata requirements Last updated: 2023-06 Authorship: California Conservation Easement Database CCED Geographic Unit of Accuracy: Parcels or portion of parcels. Data is known to be incomplete and include errors. Data has been compiled from existing datasets and thus accuracy varies greatly between areas. Methodology for Data Development: N/A Anticipated timeline for regular updates: N/A Metadata: Found within the shapefile	In compliance	In compliance	In compliance	In compliance - statewide	In compliance	In compliance
46	RAMNA	Habitat and Biodiversity	California Desert Conservation Area (CDCA) Plan Area	Desert Renewable Energy Conservation Planning Boundary [ds501]	Desert Renewable Energy Conservation Plan (DRECP)	California Desert Conservation Area (CDCA) Plan Boundary. As defined in Section 601 of the FLPMA, the CDCA is a 25-million-acre expanse of land in Southern California designated by Congress in 1976 through the FLPMA. About 10 million acres of the CDCA are administered by BLM under its CDCA Plan.	https://data.ca.gov/dataset/desert-renewable-energy-conservation-planning-boundary-ds501	Available via public feature service	Meets some metadata requirements Last updated: 2018-02-26 Authorship: BLM Geographic Unit of Accuracy: N/A Methodology for Data Development: N/A Anticipated timeline for regular updates: as needed Metadata: https://drecp.databasin.org/datasets/c9c8208ef09e48249c9cf989b0aa2e1d/layers/d55be057cbc54302b186372400083202/metadata/original/	In compliance	In compliance	In compliance	Partially - desert parts only	In compliance	In compliance
47	RAMNA	Habitat and Biodiversity	California Protected Areas Holdings	Protected Areas (SuperUnits) by Agency Level	California Protected Areas Database	Super Units displayed by agency level (Federal, Non Profit, State, Special District, County, City, or Private). The California Protected Areas Database (CPAD) is a GIS inventory of all protected park and open space lands in California. Learn more at www.calands.org . CPAD is managed and published by the non profit GreenInfo Network.	https://data.ca.gov/dataset/california-protected-areas-database	Available via public feature service	Meets some metadata requirements Last updated: 2021-07-12 Authorship: N/A Geographic Unit of Accuracy: N/A Methodology for Data Development: N/A Anticipated timeline for regular updates: N/A Metadata: https://gis.cnra.ca.gov/arcgis/rest/services/Boundaries/CPAD_Agency_Level/MapServer/1/metadata	In compliance	In compliance	In compliance	In compliance - Statewide	In compliance	In compliance
48	RAMNA	Habitat and Biodiversity	California Protected Areas Holdings	Protected Areas (Units) by Agency Level	California Protected Areas Database	Units displayed by agency level (Federal, Non Profit, State, Special District, County, City, or Private). The California Protected Areas Database (CPAD) is a GIS inventory of all protected park and open space lands in California. Learn more at www.calands.org . CPAD is managed and published by the non profit GreenInfo Network.	https://data.ca.gov/dataset/california-protected-areas-database	Available via public feature service	Meets some metadata requirements Last updated: 2021-07-12 Authorship: N/A Geographic Unit of Accuracy: N/A Methodology for Data Development: N/A Anticipated timeline for regular updates: N/A Metadata: https://gis.cnra.ca.gov/arcgis/rest/services/Boundaries/CPAD_Agency_Level/MapServer/2/metadata	In compliance	In compliance	In compliance	In compliance - Statewide	In compliance	In compliance

ID	Type	Greenprint Theme	Layer Name	Feature Name	Source	Description	Source URL	A1: Data must be publicly available . . .	A2: Data will consist of the most recent publicly available data and must include a defined set of metadata including information on authorship, geographic unit of accuracy, methodology for data development and anticipated timeline for regular updates. *Most layers include some but not all metadata requirements. Further information will be gathered where available.	A3: Draft data will not be included in the tool.	A4. Data should be created, used and/or recommended for use by regulatory agencies, and other state and federal agencies.	A5. Data depicted will not be altered from their original source.	A6. Data will be regionally comprehensive to the extent feasible, unless data is locally important . . .	A7. Data will be for informational purposes only. . .	A8. Data will be for informational purposes and will not be adopted by SCAG and are not an expression of regional policy.
49	RAMNA	Habitat and Biodiversity	California Protected Areas Holdings	Protected Areas (Holdings) by Agency Level	California Protected Areas Database	Holdings displayed by agency level (Federal, Non Profit, State, Special District, County, City, or Private). The California Protected Areas Database (CPAD) is a GIS inventory of all protected park and open space lands in California. Learn more at www.calands.org . CPAD is managed and published by the non profit GreenInfo Network.	https://data.cnra.ca.gov/datas/et/california-protected-areas-database	Available via public feature service	Meets some metadata requirements Last updated: 2021-07-12 Authorship: N/A Geographic Unit of Accuracy: N/A Methodology for Data Development: N/A Anticipated timeline for regular updates:N/A Metadata: https://gis.cnra.ca.gov/arcgis/rest/services/Boundaries/CPAD_Agency_Level/MapServer/0/metadata	In compliance	In compliance	In compliance	In compliance - Statewide	In compliance	In compliance
50	RAMNA	Habitat and Biodiversity	California Tiger Salamander Connectivity	California Tiger Salamander Range SBA A001A [ds2839]	South Coast Wildlands	Vector datasets of CWHR range maps are one component of California Wildlife Habitat Relationships (CWHR), a comprehensive information system and predictive model for California's wildlife. The CWHR System was developed to support habitat conservation and management, land use planning, impact assessment, education, and research involving terrestrial vertebrates in California. CWHR contains information on life history, management status, geographic distribution, and habitat relationships for wildlife species known to occur regularly in California. Range maps represent the maximum, current geographic extent of each species within California. They were originally delineated at a scale of 1:5,000,000 by species-level experts and have gradually been revised at a scale of 1:1,000,000.	https://data.cdfw.opendata.arcgis.com/datasets/CDFW::california-tiger-salamander-range-sba-dps-cwhr-a001a-ds2839/explore	Available via public feature service	Meets some metadata requirements Last updated: 2019-09-26 Authorship: Melanie Gogol-Prokurat Geographic Unit of Accuracy: N/A Methodology for Data Development: N/A Anticipated timeline for regular updates: unknown Metadata: https://map.dfg.ca.gov/metadata/ds2839.html	In compliance	In compliance	In compliance	In compliance - mainly in Santa Barbara	In compliance	In compliance
51	RAMNA	Habitat and Biodiversity	CDFW Approved Mitigation Service Areas	CDFW Approved Mitigation Service Areas [ds2659]	CDFW	This data set shows the Service Areas for Mitigation and Conservation Banks for which the California Department of Fish and Wildlife is a signatory.	https://services.arcgis.com/Ug9r85PotqM3MfRV/arcgis/rest/services/biosds2659_fpu/FeatureService/0	Available via public feature service	Meets some metadata requirements Last updated: 2023-01-18 Authorship: Diane Mastalir; GIS Specialist; California Department of Fish and Wildlife Geographic Unit of Accuracy: N/A Methodology for Data Development: N/A Anticipated timeline for regular updates: N/A Metadata: https://www.arcgis.com/sharing/rest/content/items/5fbb204e364d5a824e660bf379c126/info/metadata/metadata.xml?format=default&output=html	In compliance	In compliance	In compliance	In compliance - statewide	In compliance	In compliance
52	RAMNA	Habitat and Biodiversity	Conservation Plan Boundaries, Natural Community Conservation Plan (NCCP)/Habitat Conservation Plan (HCP)	Conservation Plan Boundaries - HCP and NCCP [ds760]	CDFW, USFWS	This data set contains Natural Community Conservation Plan (NCCP) and Habitat Conservation Plan (HCP) boundaries in California. NCCP's are CDFW approved plans that take a broad based approach to protect habitats and species. The program began in 1991. CDFW and the U.S. Fish and Wildlife Service provide the necessary support, direction, and guidance to NCCP/HCP participants. For more information on NCCP's please see https://www.wildlife.ca.gov/conservation/planning/nccp .	https://data.ca.gov/dataset/conservation-plan-boundaries-hcp-and-nccp-ds760	Available via public feature service	Meets some metadata requirements Last updated: 2021-08-27 Authorship: California Department of Fish And Wildlife Geographic Unit of Accuracy: N/A Methodology for Data Development: N/A Anticipated timeline for regular updates:N/A Metadata: https://www.arcgis.com/sharing/rest/content/items/eab447e3e9f340019f00ac1b1640b308/info/metadata/metadata.xml?format=default&output=html	In compliance	In compliance	In compliance	In compliance - statewide	In compliance	In compliance
53	RAMNA	Habitat and Biodiversity	Corps Regulatory In-Lieu Fee & Bank Information Tracking System	Bank Footprint	Mitigation Service Banks	RIBITS (Regulatory In lieu fee and Bank Information Tracking System) was developed by the U.S. Army Corps of Engineers to track mitigation banking and in-lieu fee (ILF) program activities across the United States. RIBITS includes information regarding banks and ILF program sites, associated documents, mitigation credit availability, service areas, and policies and procedures that affect bank and ILF program development and operation.	https://ribits.ops.usace.army.mil/ords/f?p=107:158:::~	Available via public feature service	Meets some metadata requirements. Authorship: N/A Geographic Unit of Accuracy: N/A Methodology for Data Development: N/A Anticipated timeline for regular updates: N/A	In compliance	In compliance	In compliance	In compliance - nationwide	In compliance	In compliance

ID	Type	Greenprint Theme	Layer Name	Feature Name	Source	Description	Source URL	A1: Data must be publicly available . . .	A2: Data will consist of the most recent publicly available data and must include a defined set of metadata including information on authorship, geographic unit of accuracy, methodology for data development and anticipated timeline for regular updates. *Most layers include some but not all metadata requirements. Further information will be gathered where available.	A3: Draft data will not be included in the tool.	A4: Data should be created, used and/or recommended for use by regulatory agencies, and other state and federal agencies.	A5: Data depicted will not be altered from their original source.	A6: Data will be regionally comprehensive to the extent feasible, unless data is locally important . .	A7: Data will be for informational purposes only. . .	A8: Data will be for informational purposes and will not be adopted by SCAG and are not an expression of regional policy.
54	RAMNA	Habitat and Biodiversity	Desert Tortoise Connectivity	Desert Tortoise Connectivity Modeling for the California Desert Linkage Network [ds844]	BLM and The Wildlands Conservancy	This data represents potential cores and patches of breeding habitat Desert tortoise (<i>Gopherus agassizii</i>). For more information about the creation and utilization of this data, please see the report "A Linkage Network for the California Deserts" at http://www.scwildlands.org/reports/Default.aspx	https://map.dfg.ca.gov/metadata/ds0844.html?5.66.18	Available via public feature service	Meets some metadata requirements Last updated: 2023-09-14 Authorship: Michael Burroughs Geographic Unit of Accuracy: N/A Methodology for Data Development: N/A Anticipated timeline for regular updates: as needed Metadata: https://map.dfg.ca.gov/metadata/ds0141.html	In compliance	In compliance	In compliance	In compliance	In compliance	In compliance
55	RAMNA	Habitat and Biodiversity	Desert Tortoise Recovery Areas	Desert Tortoise - Final Critical Habitat - USFWS [ds141]	USFWS	To provide the user with a general idea of areas where final critical habitat for desert tortoise (<i>Gopherus agassizii</i>) occur based on the description provided in the Federal Register. The geographic extent includes Mohave County, Arizona ; Washington County, Utah ; Clark and Lincoln Counties, Nevada ; and Imperial, Kern, Los Angeles, Riverside and San Bernardino Counties, California.	https://map.dfg.ca.gov/metadata/ds0141.html	Available via public feature service	Meets some metadata requirements Last updated: 2023-09-14 Authorship: Michael Burroughs Geographic Unit of Accuracy: N/A Methodology for Data Development: N/A Anticipated timeline for regular updates: as needed Metadata: https://map.dfg.ca.gov/metadata/ds0141.html	In compliance	In compliance	In compliance	In compliance	In compliance	In compliance
56	RAMNA	Habitat and Biodiversity	Ecoregion Sections & Subsections	Ecological Sections	USFS	This map displays the ecological division by color while delineating ecological provinces, sections and subsections for the conterminous United States. It is intended to provide a reference map of the ecological boundaries. More information of this data set can be found at the FSGeoData Clearinghouse (http://fsgeodata.fs.fed.us/other_resources/ecosubregions.html).	https://data.fs.usda.gov/geodata/edw/datasets.php?datasetCategory=geoscientificinformation	Available via public feature service	Meets some metadata requirements Last updated: 2007 Authorship: David T. Cleland Geographic Unit of Accuracy: N/A Methodology for Data Development: N/A Anticipated timeline for regular updates: https://databasin.org/datasets/3dde7d12df44430998f1fceb48c5f6f5/layers/cd9988e2bd104487ad562c0ffc988c47/metadata/original/	In compliance	In compliance	In compliance	In compliance - nationwide	In compliance	In compliance
57	RAMNA	Habitat and Biodiversity	Ecoregion Sections & Subsections	Ecological Subsections	USFS	This map displays the ecological division by color while delineating ecological provinces, sections and subsections for the conterminous United States. It is intended to provide a reference map of the ecological boundaries. Brief descriptions of the section map units provide an abstract primarily of the climate, physiographic, and geologic substrate that combine to form ecosystems with distinctive vegetation and other unique ecological characteristics. More information of this data set can be found at the FSGeoData Clearinghouse (http://fsgeodata.fs.fed.us/other_resources/ecosubregions.html).	https://data.fs.usda.gov/geodata/edw/datasets.php?datasetCategory=geoscientificinformation	Available via public feature service	Meets some metadata requirements Last updated: Updated with ECOMAP 2007 Authorship: Hazel Gordon Geographic Unit of Accuracy: N/A Methodology for Data Development: N/A Anticipated timeline for regular updates: https://databasin.org/datasets/3dde7d12df44430998f1fceb48c5f6f5/layers/cd9988e2bd104487ad562c0ffc988c47/metadata/original/	In compliance	In compliance	In compliance	In compliance - statewide	In compliance	In compliance
58	RAMNA	Habitat and Biodiversity	Essential Connectivity Areas - California Essential Habitat Connectivity Project	Essential Connectivity Areas - California Essential Habitat Connectivity (CEHC) [ds620]	CDFW	The Essential Connectivity Map shows a statewide network of 850 relatively intact Natural Landscape Blocks (ranging in size from 2,000 to about 3.7 million acres) connected by 192 Essential Connectivity Areas (Table 3.1). There are fewer Essential Connectivity Areas than Natural Landscape Blocks, because each Essential Connectivity Area serves to connect at least two, and as many as 15 Natural Landscape Blocks. Due to the broad, statewide nature of this map, and its focus on connecting very large blocks of mostly protected natural lands, the network omits many areas that are important to biological conservation. The purpose of the map is to focus attention on large areas important to maintaining ecological integrity at the broadest scale. Natural areas excluded from this broad-brush Essential Connectivity Network can therefore not be "written off" as unimportant to connectivity conservation or to sustaining California's natural heritage.	https://data.cnra.ca.gov/datasets/essential-connectivity-areas-california-essential-habitat-connectivity-cehc-ds620	Available via public feature service	Meets some metadata requirements Last updated: 2014-04-28 (meta data updated) Authorship: Greg Ewing Geographic Unit of Accuracy: N/A Methodology for Data Development: N/A Anticipated timeline for regular updates:N/A Metadata: https://map.dfg.ca.gov/metadata/ds0620.html?5.66.18	In compliance	In compliance	In compliance	In compliance - statewide	In compliance	In compliance

ID	Type	Greenprint Theme	Layer Name	Feature Name	Source	Description	Source URL	A1: Data must be publicly available . . .	A2: Data will consist of the most recent publicly available data and must include a defined set of metadata including information on authorship, geographic unit of accuracy, methodology for data development and anticipated timeline for regular updates. *Most layers include some but not all metadata requirements. Further information will be gathered where available.	A3: Draft data will not be included in the tool.	A4. Data should be created, used and/or recommended for use by regulatory agencies, and other state and federal agencies.	A5. Data depicted will not be altered from their original source.	A6. Data will be regionally comprehensive to the extent feasible, unless data is locally important . .	A7. Data will be for informational purposes only. . .	A8. Data will be for informational purposes and will not be adopted by SCAG and are not an expression of regional policy.
59	RAMNA	Habitat and Biodiversity	Essential Fish Habitat - Habitat Areas of Particular Concern	NMFS_WCR_ESA_Critical_Habitat_line	NOAA Fisheries	The National Marine Fisheries Service's (NMFS) West Coast Region (WCR) publishes this service for Endangered Species Act (ESA) critical habitat spatial data. Official critical habitat boundaries may include regulatory text that modifies or clarifies maps and spatial data. Proposed rules, final rules, and the CFR also describe any areas that are excluded from critical habitat or otherwise not part of critical habitat (e.g., ineligible areas), some of which have not been clipped out of the spatial data.	https://maps.fisheries.noaa.gov/portal/habitat/ome/item.html?id=2abcff6b1cf14dcda99cbd5492b1c404	Available via public feature service	Meets some metadata requirements Last updated: 2021-03-10 Authorship: NOAA Fisheries / Office of Habitat Conservation / Habitat Protection Division Geographic Unit of Accuracy: N/A Methodology for Data Development: N/A Anticipated timeline for regular updates:N/A Metadata: N/A	In compliance	In compliance	In compliance	In compliance - Statewide	In compliance	In compliance
60	RAMNA	Habitat and Biodiversity	Essential Fish Habitat - Habitat Areas of Particular Concern	NMFS_WCR_ESA_Critical_Habitat_poly	NOAA Fisheries	The National Marine Fisheries Service's (NMFS) West Coast Region (WCR) publishes this service for Endangered Species Act (ESA) critical habitat spatial data. Official critical habitat boundaries may include regulatory text that modifies or clarifies maps and spatial data. Proposed rules, final rules, and the CFR also describe any areas that are excluded from critical habitat or otherwise not part of critical habitat (e.g., ineligible areas), some of which have not been clipped out of the spatial data.	https://maps.fisheries.noaa.gov/portal/habitat/ome/item.html?id=2abcff6b1cf14dcda99cbd5492b1c404	Available via public feature service	Meets some metadata requirements Last updated: 2021-03-10 Authorship: NOAA Fisheries / Office of Habitat Conservation / Habitat Protection Division Geographic Unit of Accuracy: N/A Methodology for Data Development: N/A Anticipated timeline for regular updates:N/A Metadata: N/A	In compliance	In compliance	In compliance	In compliance - Statewide	In compliance	In compliance
61	RAMNA	Habitat and Biodiversity	Fish Critical Habitat Areas	NMFS_WCR_ESA_Critical_Habitat	NOAA Fisheries	The National Marine Fisheries Service's (NMFS) West Coast Region (WCR) publishes this service for Endangered Species Act (ESA) critical habitat spatial data. Official critical habitat boundaries may include regulatory text that modifies or clarifies maps and spatial data. Proposed rules, final rules, and the CFR also describe any areas that are excluded from critical habitat or otherwise not part of critical habitat (e.g., ineligible areas), some of which have not been clipped out of the spatial data.	https://maps.fisheries.noaa.gov/portal/habitat/ome/item.html?id=2abcff6b1cf14dcda99cbd5492b1c404	Available via public feature service	Meets some metadata requirements Last updated: 2023-08-11 (From website) Authorship: NOAA National Marine Fisheries Service, West Coast Region Geographic Unit of Accuracy: N/A Methodology for Data Development: N/A Anticipated timeline for regular updates: N/A Metadata: https://maps.fisheries.noaa.gov/portal/sharing/rest/content/items/2abcff6b1cf14dcda99cbd5492b1c404/info/metadata/metadata.xml?format=default&output=html	In compliance	In compliance	In compliance	In compliance - west coast	In compliance	In compliance
62	RAMNA	Habitat and Biodiversity	Fish Passage Priorities	Fish Passage Priorities - CDFW - 2019 [ds2868]	CDFW	To display the 2019 California Department of Fish and Wildlifes list of anadromous fish passage statewide anadromous priority barriers for removal. This statewide list of priority barriers is based on significance to fish migration and is independent of who manages or is responsible for the stream crossing.	https://gis.data.ca.gov/dataset/e444fb848463450f95496adc2d2559380/about	Available via public feature service	Meets some metadata requirements Last updated: 2020-04-23 Authorship: Anne Elston Geographic Unit of Accuracy: N/A Methodology for Data Development: N/A Anticipated timeline for regular updates: N/A Metadata: https://www.arcgis.com/sharing/rest/content/items/e444fb848463450f95496adc2d255938/info/metadata/metadata.xml?format=default&output=html	In compliance	In compliance	In compliance	In compliance - statewide	In compliance	In compliance
63	RAMNA	Habitat and Biodiversity	Landscape Blocks for the California Desert Linkage Network [DS823]	Landscape Blocks for the California Desert Linkage Network [ds823]	BLM and The Wildlands Conservancy	The primary objective of this effort is to identify lands essential to maintain or restore functional connectivity among wildlands for all species or ecological processes of interest in the California deserts and as a vital adaptation strategy to conserve biodiversity during climate change.	https://services2.arcgis.com/Ug9r85PotqM3MFRV/arcgis/rest/services/biosds823_fpu/FeatureServer/0	Available via public feature service	Meets some metadata requirements Last updated: 2014-03-24 Authorship: Kristeen Penrod Geographic Unit of Accuracy: N/A Methodology for Data Development: N/A Anticipated timeline for regular updates: not planned Metadata: https://map.dfg.ca.gov/metadata/ds0823.html?5.66.18	In compliance	In compliance	In compliance	In compliance	In compliance	In compliance

ID	Type	Greenprint Theme	Layer Name	Feature Name	Source	Description	Source URL	A1: Data must be publicly available . . .	A2: Data will consist of the most recent publicly available data and must include a defined set of metadata including information on authorship, geographic unit of accuracy, methodology for data development and anticipated timeline for regular updates. *Most layers include some but not all metadata requirements. Further information will be gathered where available.	A3: Draft data will not be included in the tool.	A4: Data should be created, used and/or recommended for use by regulatory agencies, and other state and federal agencies.	A5: Data depicted will not be altered from their original source.	A6: Data will be regionally comprehensive to the extent feasible, unless data is locally important . . .	A7: Data will be for informational purposes only. . .	A8: Data will be for informational purposes and will not be adopted by SCAG and are not an expression of regional policy.
64	RAMNA	Habitat and Biodiversity	Linkage Design for the California Desert Linkage Network [DS822]	Linkage Design for the California Desert Linkage Network [DS822]	BLM and The Wildlands Conservancy	The primary objective of this effort is to identify lands essential to maintain or restore functional connectivity among wildlands for all species or ecological processes of interest in the California deserts and as a vital adaptation strategy to conserve biodiversity during climate change.	https://services2.arcgis.com/Uq9r85PotqM3MfRV/arcgis/rest/services/biosds822_fpu/FeatureServer/0	Available via public feature service	Meets some metadata requirements Last updated: 2014-03-24 Authorship: Kristeen Penrod Geographic Unit of Accuracy: N/A Methodology for Data Development: N/A Anticipated timeline for regular updates: not planned Metadata: https://map.dfg.ca.gov/metadata/ds0823.html?5.66.18	In compliance	In compliance	In compliance	In compliance	In compliance	In compliance
65	Other/Data for State Grants	Habitat and Biodiversity	NLCD Tree Canopy	NLCD Tree Canopy 2021	USGS	The USDA Forest Service (USFS) builds two versions of percent tree canopy cover data, in order to serve needs of multiple user communities. These datasets encompass conterminous United States (CONUS), Coastal Alaska, Hawaii, and Puerto Rico and U.S. Virgin Islands (PRUSVI). The two versions of data within the v2021-4 TCC product suite include: The initial model outputs referred to as the Science data; And a modified version built for the National Land Cover Database and referred to as NLCD data. The NLCD product suite includes data for years 2011, 2013, 2016, 2019 and 2021. For information on the Science data and processing steps see the Science metadata. Information on the NLCD data and processing steps are included here.	https://www.mrlc.gov/data/nlcd-2021-tree-canopy-cover-conus	Available via public web map service	Meets some metadata requirements Last updated: 2023-04-01 Authorship: USDA Forest Service Geographic Unit of Accuracy: 30 meters Methodology for Data Development: see metadata Anticipated timeline for regular updates: N/A Metadata: https://www.mrlc.gov/downloads/sciweb1/shared/mrlc/metadata/nlcd_tcc_conus_2021_v2021-4.tif.xml	In compliance	In compliance	In compliance	In compliance - nationwide	In compliance	In compliance
66	RAMNA	Habitat and Biodiversity	Northern Sierra Nevada Foothills Wildlife Connectivity Project	NSNF - Wildlife Linkages - CDFW [ds1005]	CDFW	The 246 linkages represent paths for wildlife movement identified by the northern Sierra Nevada foothills wildlife connectivity project. The linkages were developed through modeling suitable habitat and conducting patch analysis for 30 focal species, as well as conducting least-cost corridor analysis for 9 focal passage species. The linkages identify the least-cost route for 9 focal passage species between blocks of protected lands (landscape blocks), and incorporate habitat patches for 21 focal corridor dwellers (species that may take more than one generation to move through a corridor).	https://gis.data.ca.gov/dataset/s/CDFW::nsnf-wildlife-linkages-cdfw-ds1005/about	Available via public feature service	Meets some metadata requirements Last updated: 2014-06-10 Authorship: Geographic Unit of Accuracy: N/A Methodology for Data Development: N/A Anticipated timeline for regular updates: N/A Metadata: https://www.arcgis.com/sharing/rest/content/items/b2383a7220f94d899f898a0607632089/info/metadata/metadata.xml?format=default&output=html	In compliance	In compliance	In compliance	In compliance - statewide	In compliance	In compliance
67	RAMNA	Habitat and Biodiversity	Potential Riparian Connections – California Essential Habitat Connectivity Project	Potential Riparian Connections - CEHC [ds622]	CDFW	These potential riparian connections were added to illustrate the contribution of streams and rivers in providing additional avenues for terrestrial and aquatic connectivity to the network of Natural Landscape Blocks and Essential Connectivity Areas developed for the California Essential Habitat Connectivity Project.	https://gis.data.ca.gov/dataset/s/e32a345078884255900e02e0f43b51d9	Available via public feature service	Meets some metadata requirements Last updated: 2003-09-01 Authorship: Monica Parisi Geographic Unit of Accuracy: N/A Methodology for Data Development: N/A Anticipated timeline for regular updates: unknown Metadata: https://map.dfg.ca.gov/metadata/ds0622.html?5.66.18	In compliance	In compliance	In compliance	In compliance - statewide	In compliance	In compliance
68	RAMNA	Habitat and Biodiversity	South Coast Missing Linkages (ds419)	South Coast Missing Linkages [ds419]	South Coast Wildlands	A Linkage Design addresses the potential movement needs for several focal species. For more details on the methods used for creating each Linkage Design refer to the individual linkage reports at http://www.scwildlands.org/reports.aspx This 'Linkage Designs' feature class delineates the outer-boundaries of 12 critical landscape linkages identified by the South Coast Missing Linkages Project.	https://map.dfg.ca.gov/metadata/ds0419.html	Available via public feature service	Meets some metadata requirements Last updated: 2008-12-02 Authorship: Kristeen Penrod Geographic Unit of Accuracy: N/A Methodology for Data Development: N/A Anticipated timeline for regular updates: irregular Metadata: https://map.dfg.ca.gov/metadata/ds0419.html	In compliance	In compliance	In compliance	In compliance - Southern CA	In compliance	In compliance

ID	Type	Greenprint Theme	Layer Name	Feature Name	Source	Description	Source URL	A1: Data must be publicly available . . .	A2: Data will consist of the most recent publicly available data and must include a defined set of metadata including information on authorship, geographic unit of accuracy, methodology for data development and anticipated timeline for regular updates. *Most layers include some but not all metadata requirements. Further information will be gathered where available.	A3: Draft data will not be included in the tool.	A4. Data should be created, used and/or recommended for use by regulatory agencies, and other state and federal agencies.	A5. Data depicted will not be altered from their original source.	A6. Data will be regionally comprehensive to the extent feasible, unless data is locally important . .	A7. Data will be for informational purposes only. . .	A8. Data will be for informational purposes and will not be adopted by SCAG and are not an expression of regional policy.
69	RAMNA	Habitat and Biodiversity	SWAP Terrestrial Targets – 2015	SWAP Terrestrial Targets - 2015 [ds1966]	CDFW	This data set was created to describe the spatial extent of targets for the 2015 California State Wildlife Action Plan (SWAP) Update. The California State Wildlife Action Plan (SWAP) is required under the State and Tribal Wildlife Grants Program (SWG) to allow states and territories to receive Federal grant funds. It is a comprehensive vision for wildlife conservation initially completed in 2005 and updated in 2015. The GIS data for SWAP are divided into two areas - terrestrial (vegetation macrogroup based) and aquatic(watershed based)data. This file contains the terrestrial targets.	https://data.ca.gov/dataset/swap-terrestrial-targets-2015-ds1966	Available via public feature service	Meets some metadata requirements Last updated: 2018-02-01 Authorship: Diane Mastalir Geographic Unit of Accuracy: N/A Methodology for Data Development: N/A Anticipated timeline for regular updates:N/A Metadata: https://map.dfg.ca.gov/metadata/ds1966.html	In compliance	In compliance	In compliance	In compliance - statewide	In compliance	In compliance
70	RAMNA	Habitat and Biodiversity	Terrestrial Biodiversity Summary – ACE [ds2739]	Terrestrial Biodiversity Summary - ACE [ds2739]	CDFW	Terrestrial Biodiversity Summary, Areas of Conservation Emphasis (ACE), version 3.0. The Terrestrial Biodiversity Summary is a compilation of the best available information on terrestrial species biodiversity in California, including amphibians, birds, mammals, plants, and reptiles, for the California Department of Fish and Wildlifes (CDFW) Areas of Conservation Emphasis Project (ACE). It is one component, together with Aquatic Biodiversity, of overall species biodiversity in California.	https://map.dfg.ca.gov/metadata/ds2739.html?5.80.28	Available via public feature service	Meets some metadata requirements Last updated: 2020-02-21 Authorship: Melanie Gogol-Prokurat Geographic Unit of Accuracy: N/A Methodology for Data Development: N/A Anticipated timeline for regular updates:N/A Metadata: https://map.dfg.ca.gov/metadata/ds2739.html?5.80.28	In compliance	In compliance	In compliance	In compliance - Statewide	In compliance	In compliance
71	RAMNA	Habitat and Biodiversity	Terrestrial Connectivity – ACE [ds2734]	Terrestrial Connectivity - ACE [ds2734]	CDFW	Terrestrial Connectivity, Areas of Conservation Emphasis (ACE), version 3.1. Last updated 08/21/2019. The Terrestrial Connectivity dataset is one of the four key components of the California Department of Fish and Wildlifes (CDFW) Areas of Conservation Emphasis (ACE) suite of terrestrial conservation information along with terrestrial Biodiversity, Significant Habitats, and Climate Resilience.	https://data.cnr.ca.gov/dataset/terrestrial-connectivity-ace-ds2734	Available via public feature service	Meets some metadata requirements Last updated: 2019-08-21 Authorship: Melanie Gogol-Prokurat Geographic Unit of Accuracy: N/A Methodology for Data Development: N/A Anticipated timeline for regular updates:N/A Metadata: https://www.arcgis.com/sharing/rest/content/items/220f0ea2d0fa403ca8104871c4a88638/info/metadata/metadata.xml?format=default&output=html	In compliance	In compliance	In compliance	In compliance - Statewide	In compliance	In compliance
72	RAMNA	Habitat and Biodiversity	USFWS Critical Habitat		USFWS	When a species is proposed for listing as endangered or threatened under the Endangered Species Act, the U.S. Fish and Wildlife Service must consider whether there are areas of habitat believed to be essential the species' conservation. Those areas may be proposed for designation as "critical habitat." Critical habitat is a term defined and used in the Act. It is a specific geographic area(s) that contains features essential for the conservation of a threatened or endangered species and that may require special management and protection. Critical habitat may include an area that is not currently occupied by the species but that will be needed for its recovery. An area is designated as "critical habitat" after the Service publishes a proposed Federal regulation in the Federal Register and receives and considers public comments on the proposal. The final boundaries of the critical habitat are also published in the Federal Register. Critical habitat are areas considered essential for the conservation of a listed species. Federal agencies are required to consult with the U.S. Fish and Wildlife Service on actions they carry out, fund, or authorize to ensure that their actions will not destroy or adversely modify critical habitat. These areas provide notice to the public and land managers of the importance of these areas to the conservation of a listed species. Special protections and/or restrictions are possible in areas where Federal funding, permits, licenses, authorizations, or actions occur or are required.	https://www.fws.gov/project/critical-habitat	Available via public feature service	Meets some metadata requirements Last updated: 2020-05-13 Authorship: U.S. Fish and Wildlife Service ECOS Development Team Geographic Unit of Accuracy: N/A Methodology for Data Development: N/A Anticipated timeline for regular updates: N/A Metadata: Found within Shapefile	In compliance	In compliance	In compliance	In compliance - nationwide	In compliance	In compliance

ID	Type	Greenprint Theme	Layer Name	Feature Name	Source	Description	Source URL	A1: Data must be publicly available . . .	A2: Data will consist of the most recent publicly available data and must include a defined set of metadata including information on authorship, geographic unit of accuracy, methodology for data development and anticipated timeline for regular updates. *Most layers include some but not all metadata requirements. Further information will be gathered where available.	A3: Draft data will not be included in the tool.	A4: Data should be created, used and/or recommended for use by regulatory agencies, and other state and federal agencies.	A5: Data depicted will not be altered from their original source.	A6: Data will be regionally comprehensive to the extent feasible, unless data is locally important . .	A7: Data will be for informational purposes only. . .	A8: Data will be for informational purposes and will not be adopted by SCAG and are not an expression of regional policy.
73	RAMNA	Habitat and Biodiversity	Vegetation Geospatial Data for the Advance Mitigation Needs Assessment (multiple layers & years)	Calveg Zones - Ecoregions	Caltrans SAMNA	This polygon layer consists of boundaries for the ecological tile units and CALVEG (Classification and Assessment with Landsat of Visible Ecological Groupings) zone units currently being used to tile the EVEG (existing vegetation) dataset.	https://www.fs.usda.gov/detail/r5/landmanagement/resource/management/?cid=stelprdb5347192	Available via public feature service	Meets some metadata requirements Last updated: 2023-02-01 Authorship:N/A Geographic Unit of Accuracy: N/A Methodology for Data Development: N/A Anticipated timeline for regular updates: N/A Metadata: https://apps.fs.usda.gov/arcx/rest/services/EDW/EDW_ExistingVegetationRegion05_01/MapServer/11/metadata	In compliance	In compliance	In compliance	In compliance - statewide	In compliance	In compliance
74	RAMNA	Habitat and Biodiversity	Vegetation Geospatial Data for the Advance Mitigation Needs Assessment (multiple layers & years)	California Vegetation - WHR13 Types	Caltrans SAMNA	The California Department of Forestry and Fire Protection's CALFIRE Fire and Resource Assessment Program (FRAP), in cooperation with California Department of Fish and Wildlife VegCamp program and extensive use of USDA Forest Service Region 5 Remote Sensing Laboratory (RSL) data, has compiled the "best available" land cover data available for California into a single comprehensive statewide data set. The data span a period from approximately 1990+.	https://map.dfg.ca.gov/metadata/ds1327.html	Available via public feature service	Meets some metadata requirements Last updated: 2022-06-02 (from AGOL) Authorship:N/A Geographic Unit of Accuracy: N/A Methodology for Data Development: N/A Anticipated timeline for regular updates: N/A Metadata: N/A	In compliance	In compliance	In compliance	In compliance - statewide	In compliance	In compliance
75	RAMNA	Habitat and Biodiversity	Vegetation Geospatial Data for the Advance Mitigation Needs Assessment (multiple layers & years)	Calveg South Coast	Caltrans SAMNA	This Existing Vegetation (Eveg) polygon feature class is a CALVEG (Classification and Assessment with LANDSAT of Visible Ecological Groupings) map product from a scale of 1:24,000 to 1:100,000. The geographic extent entails the northeastern portion of CALVEG Zone 7, the South Coast. Source imagery for this layer ranges from the year 2002 to 2010. Metadata can be found here: https://data.fs.usda.gov/geodata/edw/edw_resources/meta/S_USA.EVMid_R05_SouCoast.xml	https://www.fs.usda.gov/detail/r5/landmanagement/resource/management/?cid=stelprdb5347192	Available via public feature service	Meets some metadata requirements Last updated: 2018-01-18 Authorship:Nelson, Brewer, and Solem Geographic Unit of Accuracy: accurate only at certain scales, horizontal geospatial positioning accuracy for EVMid: +- 166 ft Methodology for Data Development: N/A Anticipated timeline for regular updates: As needed Metadata: https://data.fs.usda.gov/geodata/edw/edw_resources/meta/S_USA.EVMid_R05_SouCoast.xml	In compliance	In compliance	In compliance	Partially - South Coast Only, combine with adjacent layers	In compliance	In compliance
76	RAMNA	Habitat and Biodiversity	Vegetation Geospatial Data for the Advance Mitigation Needs Assessment (multiple layers & years)	Calveg South Interior	Caltrans SAMNA	This Existing Vegetation (Eveg) polygon feature class is a CALVEG (Classification and Assessment with LANDSAT of Visible Ecological Groupings) map product from a scale of 1:24,000 to 1:100,000 for CALVEG Zone 8, the South Interior. Source imagery for this layer ranges from the year 2000 to 2008. Metadata description can be found here: https://data.fs.usda.gov/geodata/edw/edw_resources/meta/S_USA.EVMid_R05_SouthInterior.xml	https://www.fs.usda.gov/detail/r5/landmanagement/resource/management/?cid=stelprdb5347192	Available via public feature service	Meets some metadata requirements Last updated: 2021-02-18 Authorship:Nelson, Brewer, and Solem Geographic Unit of Accuracy: accurate only at certain scales, horizontal geospatial positioning accuracy for EVMid: +- 166 ft Methodology for Data Development: N/A Anticipated timeline for regular updates: As needed Metadata: https://data.fs.usda.gov/geodata/edw/edw_resources/meta/S_USA.EVMid_R05_SouthInterior.xml	In compliance	In compliance	In compliance	Partially - South Interior Only, combine with adjacent layers	In compliance	In compliance
77	RAMNA	Habitat and Biodiversity	Vernal Pools - ACE [ds2732]	Vernal Pools - ACE [ds2732]	CDFW	Vernal Pools, Areas of Conservation Emphasis (ACE), version 3.0. The Terrestrial Significant Habitats dataset is one of the four key components of the California Department of Fish and Wildlife's Areas of Conservation Emphasis (ACE) suite of terrestrial conservation information, along with Terrestrial Biodiversity, Connectivity, and Climate Change Resilience. This data set was developed to support conservation planning efforts by allowing users to spatially evaluate the distribution of terrestrial significant habitats across the landscape.	https://www.arcgis.com/home/item.html?id=631ea41a6a5f41bba4191b04703fc2ed	Available via public feature service	Meets some metadata requirements Last updated: 2020-02-12 Authorship: Melanie Gogol-Prokurat Geographic Unit of Accuracy: N/A Methodology for Data Development: N/A Anticipated timeline for regular updates: varies Metadata: https://map.dfg.ca.gov/metadata/ds2732.html?5.94.01	In compliance	In compliance	In compliance	In compliance - statewide	In compliance	In compliance

ID	Type	Greenprint Theme	Layer Name	Feature Name	Source	Description	Source URL	A1: Data must be publicly available . . .	A2: Data will consist of the most recent publicly available data and must include a defined set of metadata including information on authorship, geographic unit of accuracy, methodology for data development and anticipated timeline for regular updates. *Most layers include some but not all metadata requirements. Further information will be gathered where available.	A3: Draft data will not be included in the tool.	A4. Data should be created, used and/or recommended for use by regulatory agencies, and other state and federal agencies.	A5. Data depicted will not be altered from their original source.	A6. Data will be regionally comprehensive to the extent feasible, unless data is locally important . .	A7. Data will be for informational purposes only. . .	A8. Data will be for informational purposes and will not be adopted by SCAG and are not an expression of regional policy.
78	RAMNA	Habitat and Biodiversity	Vernal Pools South Coast Ranges [ds948]	Vernal Pools South Coast Ranges [ds948]	USFWS	Vernal pools in five counties along the California central coast (Monterey, San Benito, Santa Barbara, San Luis Obispo, and Ventura counties) were mapped from one-meter resolution digital orthophoto quadrangles from USGS.	https://map.dfg.ca.gov/metadata/ds0948.html?5.61.11	Available via public feature service	Meets some metadata requirements Last updated: 2013-12-13 Authorship: Robert F. Holland, Ph.D. Geographic Unit of Accuracy: N/A Methodology for Data Development: N/A Anticipated timeline for regular updates:irregular Metadata: https://map.dfg.ca.gov/metadata/ds0948.html?5.61.11	In compliance	In compliance	In compliance	In compliance - Statewide	In compliance	In compliance
79	RAMNA	Habitat and Biodiversity	Wilderness Areas	Wilderness Areas in the United States	Wilderness Connect (University of Montana)	Wilderness areas are federally-owned public lands managed by the federal government through four agencies, the Bureau of Land Management, Fish and Wildlife Service, Forest Service, and National Park Service. When the National Wilderness Preservation System started in 1964, only 54 wilderness areas were included. Since then, the system has grown nearly every year to include more than 800. To learn more about wilderness areas, visit Wilderness Connect, the authoritative source for wilderness information online.	https://umontana.maps.arcgis.com/home/item.html?id=52c7896cdfab4660a595e6f6a7ef0e4d	Available via public feature service	Meets some metadata requirements Last updated: 2023-09-18 Authorship: Lisa Ronald Geographic Unit of Accuracy: N/A Methodology for Data Development: N/A Anticipated timeline for regular updates: N/A Metadata: No metadata but some info here https://umontana.maps.arcgis.com/home/item.html?id=52c7896cdfab4660a595e6f6a7ef0e4d	In compliance	Not by regulatory agency	In compliance	In compliance - statewide	In compliance	In compliance
80	Other/Data for State Grants	Vulnerabilities and Resilience	Brownfields		US EPA	EPA's Assessment, Cleanup and Redevelopment Exchange System (ACRES) database, Cleanups in my community (CIMC), DTSC brownfield Memorandum of Agreement (MOA). Superfund site data was obtained from EPA's Superfund Enterprise Management System (SEMS) database	https://www.epa.gov/enviroatlas/enviroatlas-brownfields	In compliance - need to download	Meets some metadata requirements Last updated: 2007-11-02 Authorship: N/A Geographic Unit of Accuracy: N/A Methodology for Data Development: N/A Anticipated timeline for regular updates: N/A Metadata: https://www.epa.gov/enviroatlas/enviroatlas-brownfields	In compliance	In compliance	In compliance	In compliance - nationwide	In compliance	In compliance
81	Other/Data for State Grants	Vulnerabilities and Resilience	CAL FIRE Facilities for Wildland Fire Protection	Facilities	California Department of Forestry and Fire Protection	This dataset includes fire stations and other facilities owned and operated by CALFIRE or by counties or other local government entities.	https://hub.scaq.ca.gov/datasets/c53f27c6587c4d92bec3734964b249ab_0/abolut	Available via public feature service	Meets some metadata requirements. Last Updated: 2022-02-14 Authorship: California Department of Forestry and Fire Protection, Contract Counties Geographic Unit of Accuracy: N/A Methodology for Data Development: see metadata Ancitipated Timeline for Regular Updates: N/A Metadata: https://www.arcgis.com/sharing/rest/content/items/c53f27c6587c4d92bec3734964b249ab/info/metadata/metadata.xml?format=default&output=html	In compliance	In compliance	In compliance	In compliance - Statewide	In compliance	In compliance
82	Other/Data for State Grants	Vulnerabilities and Resilience	California Fault Traces	Fault Traces	California Department of Conservation	This data set contains the Alquist-Priolo Earthquake Fault Zones and fault traces as shown on the Official Alquist-Priolo Earthquake Fault Zones Map of the {quadName} quadrangle. The dataset is comprised of polygons that form regulatory zone boundaries (Alquist-Priolo Earthquake Fault Zones), lines that show identified fault traces, and label points and leaderlines for fault trace annotation. These features delineate areas where surface fault rupture previously has occurred, or where local topographic, geological, and geotechnical conditions indicate a potential for permanent ground displacements such that mitigation by avoidance as stated in Public Resources Code Section 2621.5 would be required.	https://hub.scaq.ca.gov/datasets/5feacec8c0db41c9b8722e1e886db4bc_0/abolut	Available via public feature service	Meets some metadata requirements. Last Updated: 2022-02-14 Authorship: N/A Geographic Unit of Accuracy: N/A Methodology for Data Development: see metadata Ancitipated Timeline for Regular Updates: N/A Metadata: https://www.arcgis.com/sharing/rest/content/items/5feacec8c0db41c9b8722e1e886db4bc/info/metadata/metadata.xml?format=default&output=html	In compliance	In compliance	In compliance	In compliance - Statewide	In compliance	In compliance

ID	Type	Greenprint Theme	Layer Name	Feature Name	Source	Description	Source URL	A1: Data must be publicly available . . .	A2: Data will consist of the most recent publicly available data and must include a defined set of metadata including information on authorship, geographic unit of accuracy, methodology for data development and anticipated timeline for regular updates. *Most layers include some but not all metadata requirements. Further information will be gathered where available.	A3: Draft data will not be included in the tool.	A4. Data should be created, used and/or recommended for use by regulatory agencies, and other state and federal agencies.	A5. Data depicted will not be altered from their original source.	A6. Data will be regionally comprehensive to the extent feasible, unless data is locally important . .	A7. Data will be for informational purposes only. . .	A8. Data will be for informational purposes and will not be adopted by SCAG and are not an expression of regional policy.
83	Other/Data for State Grants	Vulnerabilities and Resilience	California Liquefaction Zones	Liquefaction Zones	California Department of Conservation	This is a digital Seismic Hazard Zone Map presenting areas where liquefaction and landslides may occur during a strong earthquake. Three types of geological hazards, referred to as seismic hazard zones, may be featured on the map: 1) liquefaction, 2) earthquake-induced landslides, and 3) overlapping liquefaction and earthquake-induced landslides. In addition, a fourth feature may be included representing areas not evaluated for liquefaction or earthquake-induced landslides.	https://hub.scag.ca.gov/datasets/a6a8e69a09534ec7be2328b42aa8fd3d_0/about	Available via public feature service	Meets some metadata requirements. Last Updated: 2022-02-14 Authorship: N/A Geographic Unit of Accuracy: N/A Methodology for Data Development: see metadata Anticipated Timeline for Regular Updates: N/A Metadata: https://www.arcgis.com/sharing/rest/content/items/a6a8e69a09534ec7be2328b42aa8fd3d/info/metadata/metadata.xml?format=html&output=html	In compliance	In compliance	In compliance	In compliance - Statewide	In compliance	In compliance
84	RAMNA	Vulnerabilities and Resilience	Fire Hazard Severity Zones in State Responsibility Area	FHSZ in SRA	California Department of Forestry and Fire Protection	CAL FIRE adopted Fire Hazard Severity Zone maps for State Responsibility Areas in November 2007. The maps and related regulations were approved by the Office of Administrative Law.	https://osfm.fire.ca.gov/divisions/community-wildfire-preparedness-and-mitigation/wildfire-preparedness/fire-hazard-severity	Available via public feature service	Meets some metadata requirements Last updated: 2020-01-13 (from website) Authorship: N/A Geographic Unit of Accuracy: N/A Methodology for Data Development: N/A Anticipated timeline for regular updates: N/A Metadata: N/A	In compliance	In compliance	In compliance	In compliance - statewide	In compliance	In compliance
85	Other/Data for State Grants	Vulnerabilities and Resilience	Landslide-Zone Maps		California Geological Survey	The statewide landslide map database shows many of the landslides mapped by CGS and others over the past 50 years. Each feature includes a database record showing at least the source of the original mapping. Landslide areas shown in color have more information available (see explanation button). The source maps for this database have focused on deep-seated landslides, mapping of debris flows is generally much less complete. Updates to the database are continuing, both to include more existing maps and to add current landslides as they occur.	https://www.arcgis.com/home/item.html?id=998ea7bf3854164a5a227edd2c3d0de	In compliance	Meets some metadata requirements Last updated: 2016-04-05; uploaded 2020-07-23 Authorship: Nathaniel Roth, California Geological Survey, Department of Conservation Geographic Unit of Accuracy: N/A Methodology for Data Development: N/A Anticipated timeline for regular updates: as needed Metadata: https://maps.conservation.ca.gov/cgs/metadata/CaLSI_metadata.html	In compliance	In compliance	In compliance	In compliance - statewide	In compliance	In compliance
86	RAMNA	Vulnerabilities and Resilience	National Flood Hazard Layer	NFHLREST - Flood Hazard Zones	Federal Emergency Management Agency	The S_Fld_Haz_Ar table contains information about the flood hazards within the flood risk project area. These zones are used by FEMA to designate the SFHA and for insurance rating purposes. These data are the regulatory flood zones designated by FEMA.	https://www.fema.gov/flood-maps/national-flood-hazard-layer	Available via public feature service	Meets some metadata requirements Last updated: 2021-04-27 Authorship: N/A Geographic Unit of Accuracy: N/A Methodology for Data Development: N/A Anticipated timeline for regular updates: N/A Metadata: https://hazards.fema.gov/gis/nfhl/rest/services/public/NFHL/MapServer/0/metadata (2021) https://hazards.fema.gov/filedownload/metadata/NFHL/NFHL_metadata.xml (2015)	In compliance	In compliance	In compliance	In compliance - nationwide	In compliance	In compliance

ID	Type	Greenprint Theme	Layer Name	Feature Name	Source	Description	Source URL	A1: Data must be publicly available . . .	A2: Data will consist of the most recent publicly available data and must include a defined set of metadata including information on authorship, geographic unit of accuracy, methodology for data development and anticipated timeline for regular updates. *Most layers include some but not all metadata requirements. Further information will be gathered where available.	A3: Draft data will not be included in the tool.	A4. Data should be created, used and/or recommended for use by regulatory agencies, and other state and federal agencies.	A5. Data depicted will not be altered from their original source.	A6. Data will be regionally comprehensive to the extent feasible, unless data is locally important . .	A7. Data will be for informational purposes only. . .	A8. Data will be for informational purposes and will not be adopted by SCAG and are not an expression of regional policy.
87	Other/Data for State Grants	Vulnerabilities and Resilience	Sea Level Rise	CoSMoS SLR 6.56 ft (2.00m)	USGS	This data contains maximum depth of flooding (cm) in the region landward of the present-day shoreline for the sea-level rise (SLR) and storm condition indicated. The Coastal Storm Modeling System (CoSMoS) makes detailed predictions (meter-scale) over large geographic scales (100s of kilometers) of storm-induced coastal flooding and erosion for both current and future sea-level rise (SLR) scenarios. Projections for CoSMoS v3.1 in Central California include flood-hazard information for the coast from Pt. Conception to the Golden Gate. Outputs include SLR scenarios of 0.0, 0.25, 0.5, 0.75, 1.0, 1.5, 2.0, 2.5, 3.0, and 5.0 meters; storm scenarios include background conditions (astronomic spring tide and average atmospheric conditions) and simulated 1-year/20-year/100-year return interval coastal storms.	https://caltrans-gis.dot.ca.gov/arcgis/rest/services/HQstatewide/DEA_CoSMoS_SLR/MapServer	Available via public feature service.	Meets some metadata requirements Last updated: 2022-02-07 Authorship: Caltrans/USGS Geographic Unit of Accuracy: 1 meter Methodology for Data Development: see metadata Anticipated timeline for regular updates: N/A Metadata: https://caltrans-gis.dot.ca.gov/arcgis/rest/services/HQstatewide/DEA_CoSMoS_SLR/MapServer/6/metadata	In compliance	In compliance	In compliance	In compliance - statewide	In compliance	In compliance
88	Other/Data for State Grants	Vulnerabilities and Resilience	Wildland Urban Interface	Wildland Urban Interface: 2020	US Forest Service	The Wildland-Urban Interface (WUI) is the area where houses meet or intermingle with undeveloped wildland vegetation. This makes the WUI a focal area for human-environment conflicts such as wildland fires, habitat fragmentation, invasive species, and biodiversity decline. Using geographic information systems (GIS), we integrated U.S. Census and USGS National Land Cover Data, to map the Federal Register definition of WUI (Federal Register 66:751, 2001) for the conterminous United States from 1990-2020. These data are useful within a GIS for mapping and analysis at national, state, and local levels. Data are available as a geodatabase and include information such as housing densities for 1990, 2000, 2010, and 2020; wildland vegetation percentages for 1992, 2001, 2011, and 2019; as well as WUI classes in 1990, 2000, 2010, and 2020.	https://www.fs.usda.gov/rds/archive/catalog/RDS-2015-0012-4	Available via public feature service.	Meets some metadata requirements Last updated: 08/09/2023 Authorship: Radeloff, Volker C.; Helmers, David P.; Mockrin, Miranda H.; Carlson, Amanda R.; Hawbaker, Todd J.; Martinuzzi, Sebastián Geographic Unit of Accuracy: N/A Methodology for Data Development: see metadata Anticipated timeline for regular updates: Every 10 years Metadata: https://www.fs.usda.gov/rds/archive/products/RDS-2015-0012-4/_metadata_RDS-2015-0012-4.html	In compliance	In compliance	In compliance	In compliance - nationwide	In compliance	In compliance
89	RAMNA	Water Resources	303(d) List of Impaired Waterbodies	Impaired Waters 2014 2016 - State 2014 2016 303d impaired streams	SWRCB	Linear features (i.e., rivers/streams) of water bodies listed as impaired under Clean Water Act section 303(d) in the 2012 listing cycle.		Available via public feature service	Meets some metadata requirements Last updated: N/A Authorship: N/A Geographic Unit of Accuracy: N/A Methodology for Data Development: N/A Anticipated timeline for regular updates: N/A Metadata: N/A	In compliance	In compliance	In compliance	In compliance - statewide	In compliance	In compliance
90	RAMNA	Water Resources	303(d) List of Impaired Waterbodies	Impaired Waters 2014 2016 - State 2014 2016 303d impaired lakes bays	SWRCB	Polygonal features (i.e., lakes/bays/estuaries) of water bodies assessed under Clean Water Act section 303(d) in the 2012 listing cycle.		Available via public feature service	Meets some metadata requirements Last updated: N/A Authorship: N/A Geographic Unit of Accuracy: N/A Methodology for Data Development: N/A Anticipated timeline for regular updates: N/A Metadata: N/A	In compliance	In compliance	In compliance	In compliance - statewide	In compliance	In compliance

ID	Type	Greenprint Theme	Layer Name	Feature Name	Source	Description	Source URL	A1: Data must be publicly available . . .	A2: Data will consist of the most recent publicly available data and must include a defined set of metadata including information on authorship, geographic unit of accuracy, methodology for data development and anticipated timeline for regular updates. *Most layers include some but not all metadata requirements. Further information will be gathered where available.	A3: Draft data will not be included in the tool.	A4. Data should be created, used and/or recommended for use by regulatory agencies, and other state and federal agencies.	A5. Data depicted will not be altered from their original source.	A6. Data will be regionally comprehensive to the extent feasible, unless data is locally important . . .	A7. Data will be for informational purposes only. . .	A8. Data will be for informational purposes and will not be adopted by SCAG and are not an expression of regional policy.
91	RAMNA	Water Resources	CalWater Hydrologic Areas	DEA CalWater Boundaries - Calwater221	California Department of Water Resources	The California Interagency Watershed Map of 1999 (Calwater 2.2, updated May 2004, "calw221") is the State of California's working definition of watershed boundaries. Previous Calwater versions (1.2 and 2.2) described California watersheds, beginning with the division of the State's 101 million acres into ten Hydrologic Regions (HR). Each HR is progressively subdivided into six smaller, nested levels: the Hydrologic Unit (HU, major rivers), Hydrologic Area (HA, major tributaries), Hydrologic Sub-Area (HSA), Super Planning Watershed (SPWS), and Planning Watershed (PWS). At the Planning Watershed (the most detailed level), where implemented, polygons range in size from approximately 3,000 to 10,000 acres. At all levels, a total of 7035 polygons represent the State's watersheds. The present version, Calwater 2.2.1, refines the watershed coding structure and documentation (database fields were added and some were renamed).	https://gispublic.waterboards.ca.gov/portals/home/item.html?id=be2e4df6d62f54e7a82594ad7f5464209	Available via public feature service	Meets some metadata requirements Last updated: 2004-05 Authorship: California Department of Forestry and Fire Protection (CDF) Fire and Resource Assessment Program (FRAP) GIS Data Librarian Geographic Unit of Accuracy: N/A Methodology for Data Development: N/A Anticipated timeline for regular updates: As needed Metadata: https://caltrans-gis.dot.ca.gov/arcgis/rest/services/CHHqenvi/DEA_CalWater_Boundaries/MapServer/0/metadata	In compliance	In compliance	In compliance	In compliance - statewide	In compliance	In compliance
92	RAMNA	Water Resources	Coastal Zone and LCP Layer	Coastal Zone (line)	California Coastal Commission	California's Coastal Zone generally extends seaward to the state's outer limit of jurisdiction, including all offshore islands, and inland to approximately 1,000 yards from the mean high tide line (MHTL) of the sea, or in significant coastal estuarine, habitat, and recreational areas to the first major ridgeline paralleling the sea or five miles from the mean high tide line of the sea, whichever is less. In developed urban areas the zone generally extends inland less than 1,000 yards. This data set represents the landward boundary of California's Coastal Zone.	https://www.coastal.ca.gov/maps/czb/	Available via public feature service	Meets some metadata requirements Last updated: 9/5/2023 Authorship: Greg Benoit (point of contact) Geographic Unit of Accuracy: N/A Methodology for Data Development: N/A Anticipated timeline for regular updates: N/A Metadata: N/A	In compliance	In compliance	In compliance	In compliance - statewide	In compliance	In compliance
93	RAMNA	Water Resources	Coastal Zone and LCP Layer	Coastal Zone (poly)	California Coastal Commission	Public Resources Code (PRC) Section 30103(a) specifically defines California's Coastal Zone as that land and water area of the State of California from the Oregon border to the border of the Republic of Mexico depicted on maps identified and set forth in Section 17 of that chapter of the Statutes of the 1975-76 Regular Session enacting PRC Division 20 (the Coastal Act of 1976). The digital version of the CZB created by developing this data is a conformed copy of the official boundary, and in some locations reflects legislative changes and Coastal Commission minor adjustments adopted from time to time since March 1977.	https://caltrans-gis.dot.ca.gov/portal/home/item.html?id=ca91ee52c98d4abfbc61fe0b085a4ffb	Available via public feature service	Meets some metadata requirements Last updated: 2022-03-08 Authorship: Esther Essoudry (point of contact) Geographic Unit of Accuracy: N/A Methodology for Data Development: N/A Anticipated timeline for regular updates: varies Metadata: https://caltrans-gis.dot.ca.gov/arcgis/rest/services/CHHqenvi/DEA_Coastal_Zone_Boundary/MapServer/0/metadata	In compliance	In compliance	In compliance	In compliance - statewide	In compliance	In compliance
94	RAMNA	Water Resources	National Hydrology Dataset & National Watershed Boundary Dataset	DEA Hydrologic Unit Codes - HUC8 USGS Subbasin	USGS	The Watershed Boundary Dataset (WBD) is a comprehensive aggregated collection of hydrologic unit data consistent with the national criteria for delineation and resolution. This dataset represents the hydrologic unit boundaries to the 12-digit (6th level) for the entire United States. Some areas may also include additional subdivisions representing the 14- and 16-digit hydrologic unit (HU).	https://data.gateways.nrcs.usda.gov/catalog/product/Description/wbd.html	Available via public feature service	Meets some metadata requirements Last updated: 2015-12-16 Authorship: USGS Geographic Unit of Accuracy: N/A Methodology for Data Development: Kind of Anticipated timeline for regular updates: As needed Metadata: https://caltrans-gis.dot.ca.gov/arcgis/rest/services/CHHqenvi/DEA_Hydrologic_Unit_Codes/MapServer/2/metadata	In compliance	In compliance	In compliance	In compliance - Statewide	In compliance	In compliance
95	RAMNA	Water Resources	National Hydrology Dataset & National Watershed Boundary Dataset	DEA Hydrologic Unit Codes - HUC10 USGS Watershed	USGS	The Watershed Boundary Dataset (WBD) is a comprehensive aggregated collection of hydrologic unit data consistent with the national criteria for delineation and resolution. It defines the areal extent of surface water drainage to a point except in coastal or lake front areas where there could be multiple outlets as stated by the "Federal Standards and Procedures for the National Watershed Boundary Dataset (WBD)" "Standard" (http://pubs.usgs.gov/tm/11/a3/).	https://caltrans-gis.dot.ca.gov/arcgis/rest/services/CHHqenvi/DEA_Hydrologic_Unit_Codes/MapServer/1	Available via public feature service	Meets some metadata requirements Last updated: 2015-12-16 Authorship: USGS Geographic Unit of Accuracy: N/A Methodology for Data Development: Kind of Anticipated timeline for regular updates: As needed Metadata: https://caltrans-gis.dot.ca.gov/arcgis/rest/services/CHHqenvi/DEA_Hydrologic_Unit_Codes/MapServer/1/metadata	In compliance	In compliance	In compliance	In compliance - Statewide	In compliance	In compliance

ID	Type	Greenprint Theme	Layer Name	Feature Name	Source	Description	Source URL	A1: Data must be publicly available . . .	A2: Data will consist of the most recent publicly available data and must include a defined set of metadata including information on authorship, geographic unit of accuracy, methodology for data development and anticipated timeline for regular updates. *Most layers include some but not all metadata requirements. Further information will be gathered where available.	A3: Draft data will not be included in the tool.	A4. Data should be created, used and/or recommended for use by regulatory agencies, and other state and federal agencies.	A5. Data depicted will not be altered from their original source.	A6. Data will be regionally comprehensive to the extent feasible, unless data is locally important . .	A7. Data will be for informational purposes only. . .	A8. Data will be for informational purposes and will not be adopted by SCAG and are not an expression of regional policy.
96	RAMNA	Water Resources	National Hydrology Dataset & National Watershed Boundary Dataset	DEA Hydrologic Unit Codes - HUC12 USGS Subwatershed	USGS	The Watershed Boundary Dataset (WBD) is a comprehensive aggregated collection of hydrologic unit data consistent with the national criteria for delineation and resolution. It defines the areal extent of surface water drainage to a point except in coastal or lake front areas where there could be multiple outlets as stated by the "Federal Standards and Procedures for the National Watershed Boundary Dataset (WBD)" "Standard" (http://pubs.usgs.gov/tm/11/a3/).	https://caltrans-gis.dot.ca.gov/arcgis/rest/services/CHHqenvi/DEA_Hydrologic_Unit_Codes/MapServer/0	Available via public feature service	Meets some metadata requirements Last updated: 2015-12-16 Authorship: USGS Geographic Unit of Accuracy: N/A Methodology for Data Development: Kind of Anticipated timeline for regular updates: As needed Metadata: https://caltrans-gis.dot.ca.gov/arcgis/rest/services/CHHqenvi/DEA_Hydrologic_Unit_Codes/MapServer/1/metadata	In compliance	In compliance	In compliance	In compliance - Statewide	In compliance	In compliance
97	RAMNA	Water Resources	National Hydrology Dataset Plus (NHDPPlus)		EPA	NHDPPlusV2 benefits from significant improvements to its primary ingredient datasets as well as a more robust stream flow estimation process, which incorporates runoff estimates from a USGS national water balance model. There are also new components, such as, excess potential evapotranspiration, major water withdrawals and additions and network-interpolated adjustments to align with gaged flows.	https://www.epa.gov/waterdata/nhdplus-california-data-vector-processing-unit-18	Available via public feature service	Meets some metadata requirements Last updated: 2023-07-18 Authorship: N/A Geographic Unit of Accuracy: N/A Methodology for Data Development: N/A Anticipated timeline for regular updates: N/A Metadata: https://apps.fs.usda.gov/arcx/rest/services/EDW/EDW_WildScenicRiverSegments_01/MapServer/1/metadata	In compliance	In compliance	In compliance	In compliance - nationwide	In compliance	In compliance
98	RAMNA	Water Resources	National Wild and Scenic Rivers	National Wild and Scenic River Line Segment	National Wild and Scenic Rivers System	This polyline feature class depicts the classification of each wild and scenic river segment designated by Congress and the Secretary of the Interior for the United States and Puerto Rico. This layer was created by a multi-agency effort including the US Forest Service, National Park Service, Bureau of Land Management and the Fish and Wildlife Service.	https://apps.fs.usda.gov/arcx/rest/services/EDW_WildScenicRiverSegments_01/MapServer/1	Available via public feature service	Meets some metadata requirements Last updated: 2023-07-18 Authorship: N/A Geographic Unit of Accuracy: N/A Methodology for Data Development: N/A Anticipated timeline for regular updates: N/A Metadata: https://apps.fs.usda.gov/arcx/rest/services/EDW/EDW_WildScenicRiverSegments_01/MapServer/1/metadata	In compliance	In compliance	In compliance	In compliance - nationwide	In compliance	In compliance
99	Other/Data for State Grants	Water Resources	Sustainable Groundwater Management Act (SGMA) Prioritization	B118_SGMA_2019_Basin_Prioritization	CA Department of Water Resources	Basin prioritization is the classification of groundwater basins based on a variety of factors identified in statute, such as population, groundwater pumping, the number of water wells, and other related factors in a basin (see Water Code § 10933). The SGMA 2019 Basin Prioritization process was conducted to reassess the priority of the groundwater basins following the 2016 basin boundary modification, as required by the Water Code.	https://gis.water.ca.gov/app/bp-dashboard/final/#	In compliance	Meets some metadata requirements Last updated: 2019-12-06 Authorship: gis@water.ca.gov Geographic Unit of Accuracy: N/A Methodology for Data Development: N/A Anticipated timeline for regular updates: N/A Metadata: https://www.arcgis.com/sharing/rest/content/items/5c27c2ea54444fb5bd543828f9689b96/info/metadata/metadata.xml?format=default&output=html	In compliance	In compliance	In compliance	In compliance - statewide	In compliance	In compliance
100	RAMNA	Water Resources	Waters and Wetlands in Geospatial Data for the Advance Mitigation Assessment (multiple layers & years)	nhd	Caltrans SAMNA	The National Hydrography Dataset (NHD) is a feature-based database that interconnects and uniquely identifies the stream segments or reaches that make up the nation's surface water drainage system. Since the NHD provides a nationally consistent framework for addressing and analysis, water-related information linked to reach addresses by one organization (national, state, local) can be shared with other organizations and easily integrated into many different types of applications to the benefit of all.	https://hydro.nationalmap.gov/arcgis/rest/services/nhd/MapServer/10	Available via public feature service	Meets some metadata requirements Last updated: 2022-01-09+R8 Authorship: N/A Geographic Unit of Accuracy: N/A Methodology for Data Development: N/A Anticipated timeline for regular updates: N/A Metadata: N/A	In compliance	In compliance	In compliance	In compliance - nationwide	In compliance	In compliance

ID	Type	Greenprint Theme	Layer Name	Feature Name	Source	Description	Source URL	A1: Data must be publicly available . . .	A2: Data will consist of the most recent publicly available data and must include a defined set of metadata including information on authorship, geographic unit of accuracy, methodology for data development and anticipated timeline for regular updates. *Most layers include some but not all metadata requirements. Further information will be gathered where available.	A3: Draft data will not be included in the tool.	A4. Data should be created, used and/or recommended for use by regulatory agencies, and other state and federal agencies.	A5. Data depicted will not be altered from their original source.	A6. Data will be regionally comprehensive to the extent feasible, unless data is locally important . .	A7. Data will be for informational purposes only. . .	A8. Data will be for informational purposes and will not be adopted by SCAG and are not an expression of regional policy.
101	RAMNA	Water Resources	Waters and Wetlands in Geospatial Data for the Advance Mitigation Assessment (multiple layers & years)	nhd	Caltrans SAMNA	The National Hydrography Dataset (NHD) is a feature-based database that interconnects and uniquely identifies the stream segments or reaches that make up the nation's surface water drainage system. NHD data was originally developed at 1:100,000-scale and exists at that scale for the whole country.	https://hydro.nationalmap.gov/arcgis/rest/services/nhd/MapServer/4/Flowline-LargeScale https://hydro.nationalmap.gov/arcgis/rest/services/nhd/MapServer/6	Available via public feature service	Meets some metadata requirements Last updated: 2023-07 Authorship: N/A Geographic Unit of Accuracy: N/A Methodology for Data Development: N/A Anticipated timeline for regular updates:N/A Metadata: N/A	In compliance	In compliance	In compliance	In compliance - nationwide	In compliance	In compliance
102	RAMNA	Water Resources	Waters and Wetlands in Geospatial Data for the Advance Mitigation Assessment (multiple layers & years)	Wetlands	Caltrans SAMNA	This data set represents the extent, approximate location and type of wetlands and deepwater habitats in the United States and its Territories. These data delineate the areal extent of wetlands and surface waters as defined by Cowardin et al. (1979). Certain wetland habitats are excluded from the National mapping program because of the limitations of aerial imagery as the primary data source used to detect wetlands.	https://www.fws.gov/wetlands/mapservices/rest/services/Wetlands/MapServer/0	Available via public feature service	Meets some metadata requirements Last updated: 2023-05-01 Authorship: U.S. Fish and Wildlife Service Geographic Unit of Accuracy: N/A Methodology for Data Development: N/A Anticipated timeline for regular updates: biannually Metadata: https://www.fws.gov/wetlands/Data/metadata/FWS_Wetlands.xml	In compliance	In compliance	In compliance	In compliance - nationwide	In compliance	In compliance
103	RAMNA	Water Resources	Watershed Boundary Section (GAI)		USGS	This file contains Hydrologic Unit (HU) polygon boundaries for the United States, Puerto Rico, and the U.S. Virgin Islands. The data is a seamless National representation of HU boundaries from 2 to 14 digits compiled from U.S. Geological Survey (USGS) National Hydrography Dataset (NHD) and U.S. Department of Agriculture (USDA) National Resources Conservation Service (NRCS) Watershed Boundary Dataset (WBD) sources. Purpose: This data is intended primarily for geographic display and analysis of regional and national data, and can also be used for illustration purposes at intermediate or small scales (1:250,000 to 1:2,000,000).	https://hydro.nationalmap.gov/arcgis/rest/services/wbd/MapServer	Available via public feature service	Meets some metadata requirements Last updated: 2023-07 Authorship: US Geological Survey - National Geospatial Program Geographic Unit of Accuracy: Hydrologic Unit polygon boundaries from 2 to 14 digits Methodology for Data Development: see metadata Anticipated timeline for regular updates: N/A Metadata: https://hydro.nationalmap.gov/arcgis/rest/services/wbd/MapServer/info/metadata	In compliance	In compliance	In compliance	In compliance - nationwide	In compliance	In compliance